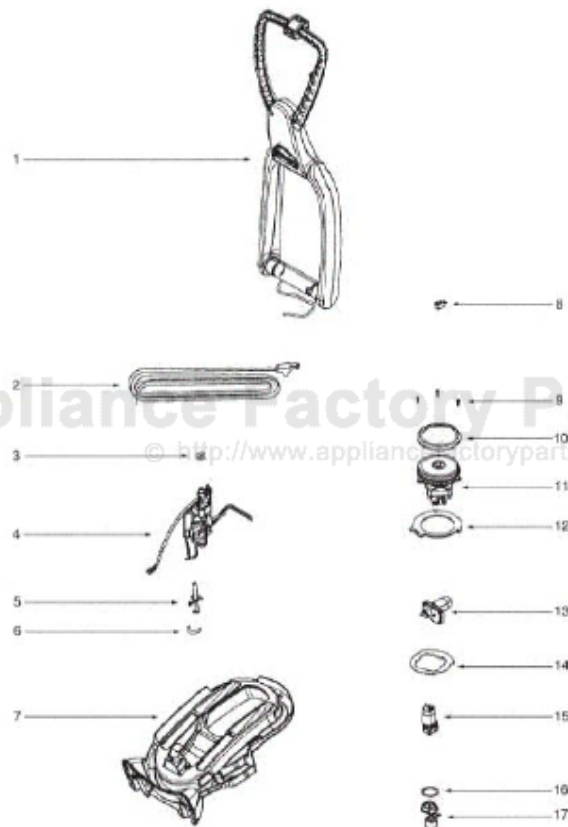


This Owner's Manual is provided and hosted by [Appliance Factory Parts](http://www.appliancefactoryparts.com).



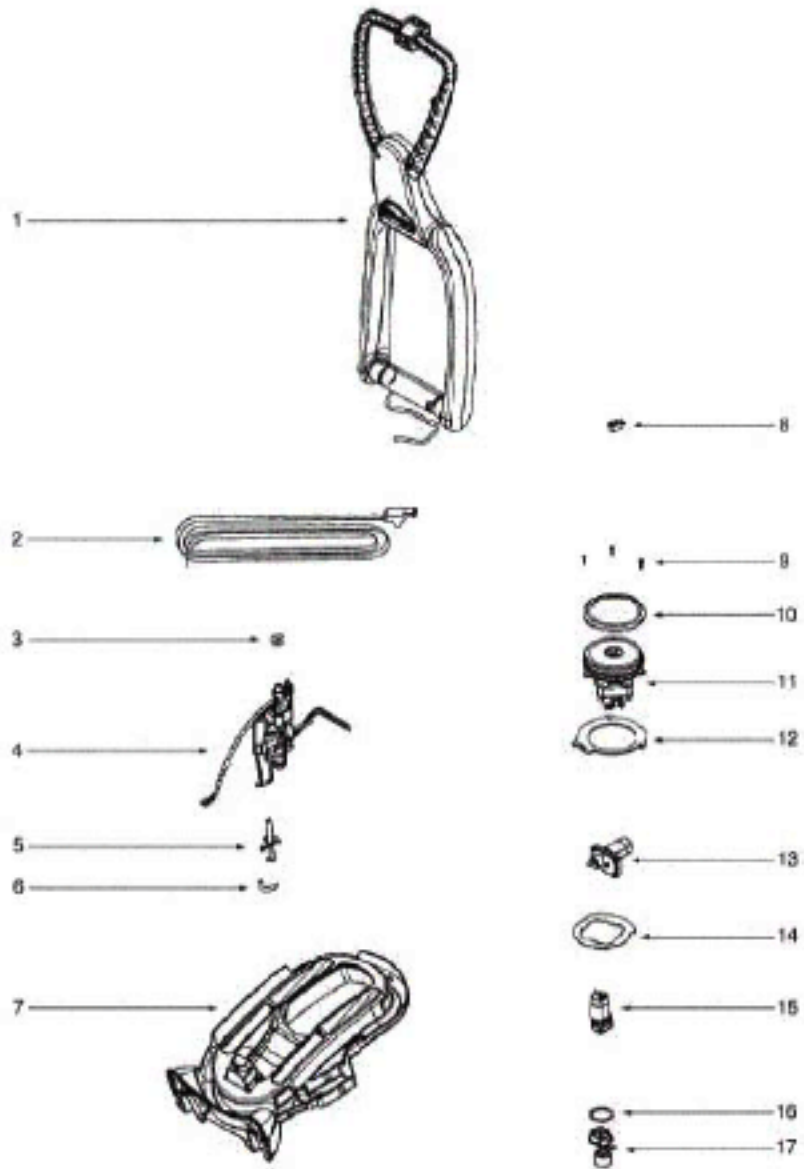
# Eureka 2596A Owner's Manual

[Shop genuine replacement parts for Eureka 2596A](#)



[Find Your Eureka Vacuum Cleaner Parts - Select From 855 Models](#)

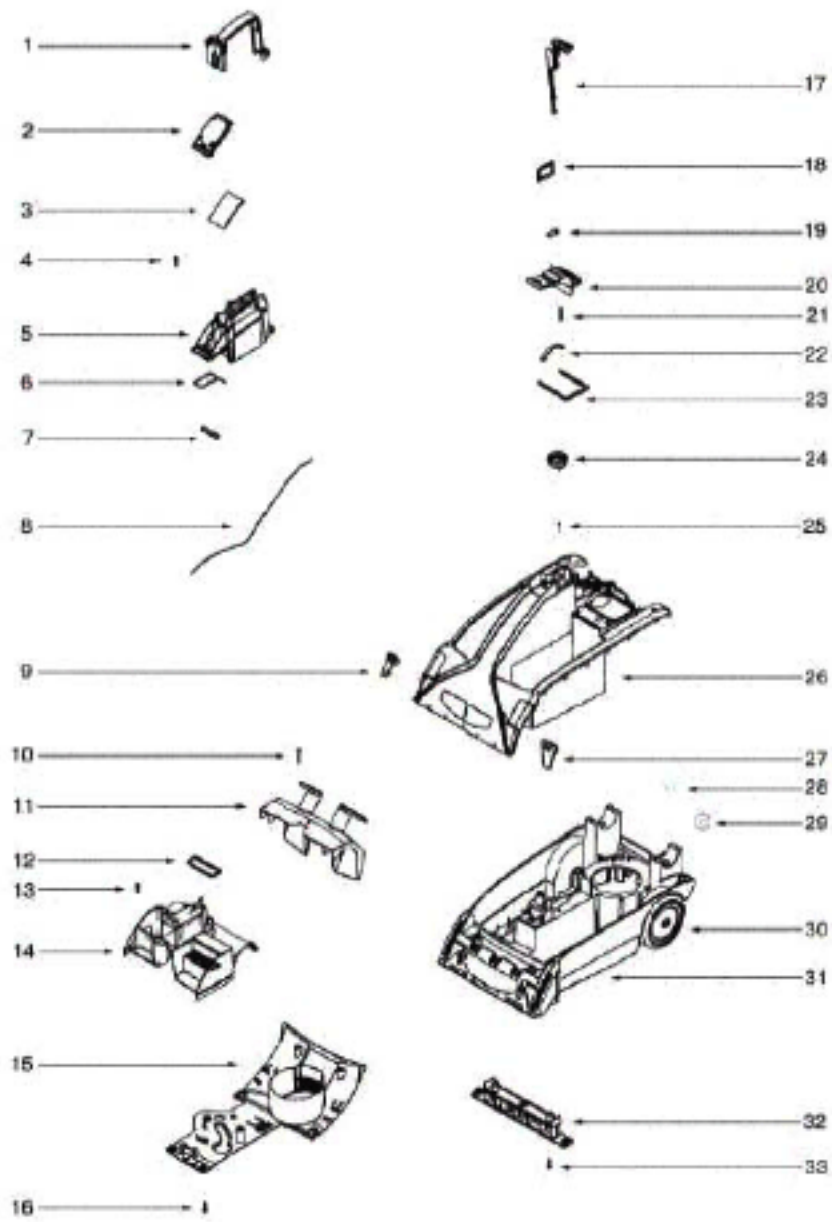
----- Manual continues below -----



## Handle and Tool Caddy - 2596A

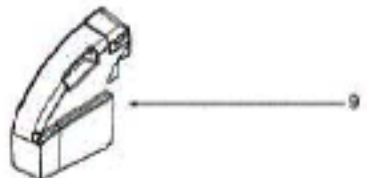
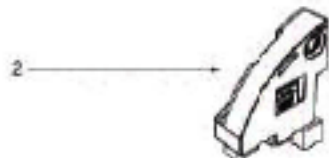
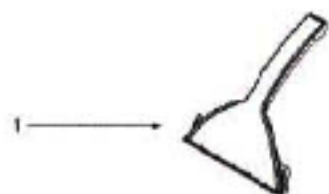
| Ref # | Part     | Description               | Comments | Qty |
|-------|----------|---------------------------|----------|-----|
| 1     | 72616-3  | HANDLE ASSEMBLY           |          |     |
| 2     | 38752-2  | CORD - SUPPLY             |          |     |
| 3     | 72979    | CLAMP - TUBE              |          |     |
| 4     | 72496A   | DIVERTER MANIFOLD ASSEMBL |          |     |
| 5     | 72986    | DETERGENT VALVE ASSEMBLY  |          |     |
| 6     | 70316-7  | TUBING                    |          |     |
| 7     | 73232-3  | TOOL CADDY ASSEMBLY       |          |     |
| 8     | 73368    | SWITCH & WIRE ASSEMBLY    |          |     |
| 9     | 53238-27 | SCREW PACKAGE             |          |     |
| 10    | 72859    | GASKET - MOTOR CAN        |          |     |
| 11    | 72382    | MOTOR - SUCTION           |          |     |
| 12    | 72834    | GASKET - MOTOR            |          |     |
| 13    | 72737    | AGITATOR DRIVE ASSEMBLY   |          |     |
| 14    | 73207    | SEPARATOR - AIR           |          |     |
| 15    | 60221C   | PUMP & MOTOR ASSY - PKGD  |          |     |
| 16    | 73292    | GASKET - MIXING MANIFOLD  |          |     |
| 17    | 72633    | MIXING MANIFOLD ASSEMBLY  |          |     |

Base and Hood - 2596A



## Base and Hood - 2596A

| Ref # | Part        | Description               | Comments      | Qty |
|-------|-------------|---------------------------|---------------|-----|
| 1     | 73534-3     | CARRY HANDLE CAP & GRPHCS |               |     |
| 2     | 72380-355N  | PORT DOOR - NOZZLE        |               |     |
| 3     | 72865       | GASKET - DOOR             |               |     |
| 5     | 72524-427N  | HANDLE - CARRY            |               |     |
| 6     | 72964       | CUP - GASKET (EXTRUDED RI |               |     |
| 7     | 72865       | GASKET - SUCTION COVER    |               |     |
| 8     | 72874       | GASKET - SUCTION COVER    |               |     |
| 9     | 72759-355N  | SLIDE LOCK - SUCTION COVE |               |     |
| 10    | 53238-36    | SCREW PACKAGE             |               |     |
| 11    | 72754-3     | CORD WRAP ASSEMBLY        |               |     |
| 12    | 72861       | GASKET - RECOVERY TANK    |               |     |
| 14    | 72740A-427N | PLATFORM - CARRYING HANDL |               |     |
| 15    | 72346-355N  | COVER - BOTTOM            |               |     |
| 17    | 73023       | DETERGENT VALVE PLUNGER A |               |     |
| 18    | 72863       | GASKET - INTAKE           |               |     |
| 19    | 72787       | CLAMP - HOLD DOWN         |               |     |
| 20    | 72377-355N  | RELEASE - HANDLE          |               |     |
| 21    | 61866       | SPRING PACKAGE            |               |     |
| 22    | 72983       | SPRING - COMPRESSION      |               |     |
| 23    | 72860       | GASKET - MOTOR COVER      |               |     |
| 24    | 72540-119N  | RECEIVER - DETERGENT      |               |     |
| 26    | 72741A-4    | MOTOR COVER ASSEMBLY      |               |     |
| 27    | 72537-355N  | SLIDE LOCK - SUCTION COVE |               |     |
| 28    | 38392       | AXLE                      |               |     |
| 29    | 54709       | PACKAGE - PRONG LOCK RETA |               |     |
| 30    | 72735       | WHEEL ASSEMBLY            |               |     |
| 31    | 72735A      | BASE ASSEMBLY             |               |     |
| 32    | 72630       | AGITATOR ASSEMBLY         |               |     |
| 33    | 53238-27    | SCREW PACKAGE             |               |     |
| 34    | 76223-355N  | CLAMP - HANDLE PIVOT      | Not pictured. |     |



## Accessories - 2596A

| Ref # | Part    | Description               | Comments | Qty |
|-------|---------|---------------------------|----------|-----|
| 1     | 73533-1 | SUCTION COVER & GRPHCS AS |          |     |
| 2     | 72610-3 | CLEAN WATER TANK ASSEMBLY |          |     |
| 3     | 72752   | DETERGENT TANK ASSEMBLY   |          |     |
| 4     | 73570A  | CLEANING SOLUTION         |          |     |
| 5     | 72751   | PLENUM FILTER             |          |     |
| 6     | 73365   | BRUSH - AGITATOR (BRISTLE |          |     |
| 8     | 72375   | GROOMING BRUSH ASSEMBLY   |          |     |
| 9     | 72609-2 | RECOVERY TANK ASSEMBLY    |          |     |
| 10    | 72757   | UPHOLSTERY HOSE & HANDLE  |          |     |
| 11    | 72763   | SUCTION NOZZLE ASSEMBLY   |          |     |