

This Owner's Manual is provided and hosted by [Appliance Factory Parts](#).



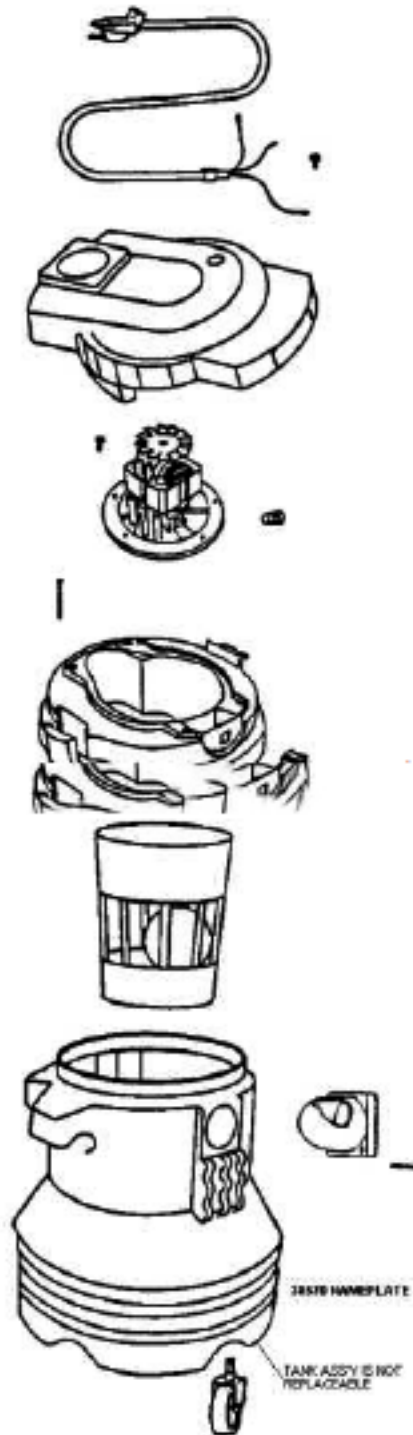
# Eureka 2823A Owner's Manual

[Shop genuine replacement parts for Eureka 2823A](#)



[Find Your Eureka Vacuum Cleaner Parts - Select From 855 Models](#)

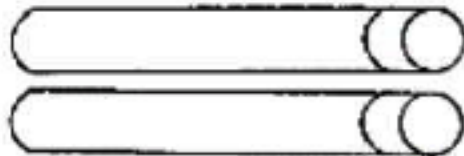
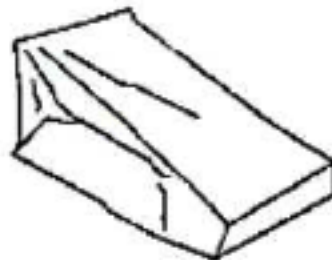
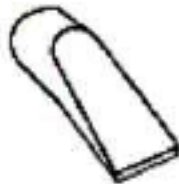
----- Manual continues below -----



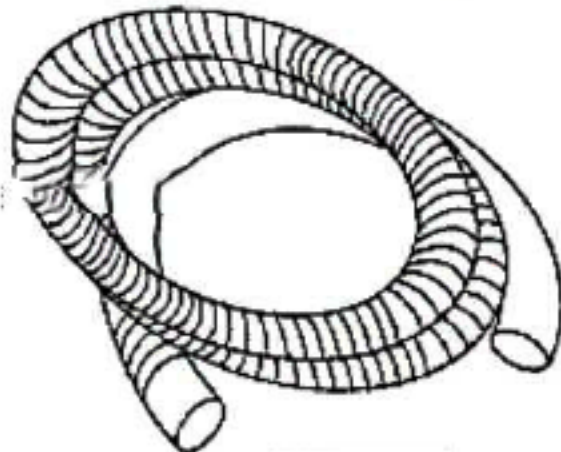
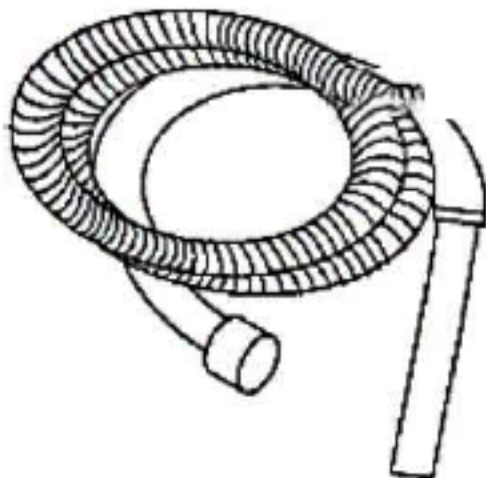
Ref#	Part	Description	Comments	Qty
1	02134A-119N	IMPELLER HOUSING ASSY		
2	15185-119N	CAGE - FILTER		
3	27563-119N	PORT - INLET		
4	27937-1	ENCLOSURE ASSEMBLY		
5	38299-2	SWITCH - ROCKER		
6	38551-1	WHEEL - CASTER		
7	38555-1	SUPPLY CORD ASSEMBLY		
8	53214-2	WIRE SPLICE 5		
9	53238-40	SCREW PACKAGE		
10	54828	SCREW-TORX WASHER - PACKA		
11	54829	SCREW-TORX WASHER - PACKA		
12	58431-2	BALL - FLOAT		
13	60178	MOTOR ASSEMBLY - PACKAGED		



**54795 FOAM FILTER W/RUBBER BAND**  
**54796 RUBBER BAND**



**54799 FLOOR NOZZLE W/SQUEEGEE**  
**27572- 1 SQUEEGEE ONLY**



CUST.  
PKG.

Ref#	Part	Description	Comments	Qty
1	27572-1	SQUEEGEE - INSERT		
2	27733-4	CUSTOMER PACK		
3	54775	PAPER FILTER PACKAGE ASSY		
4	54795	FOAM FILTER PKG		
5	54796	RUBBER BAND - PKG OF 3		
6	54797	WAND - STRAIGHT		
7	54798	HOSE ASSEMBLY		
8	54799	FLOOR NOZZLE ASSY - PKGD		
9	54801	WAND - STRAIGHT (2 1/2")		
10	54802	2 1/2" WET/DRY HOSE		
11	54803	2 1/2" UTILITY NOZZLE PKG		
12	54804	NOZZLE - BLOWER (2 1/2")		