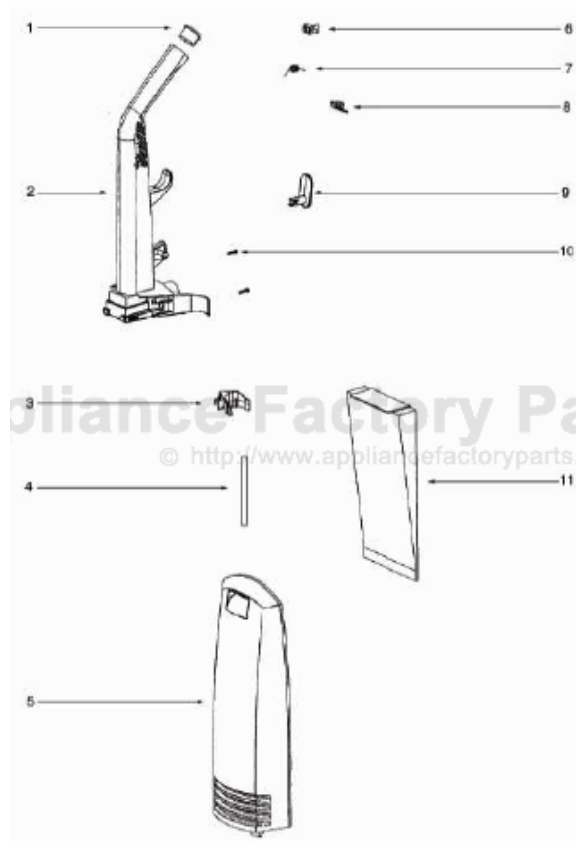


This Owner's Manual is provided and hosted by [Appliance Factory Parts](http://www.appliancefactoryparts.com).



Eureka 2900A Owner's Manual

[Shop genuine replacement parts for Eureka 2900A](#)

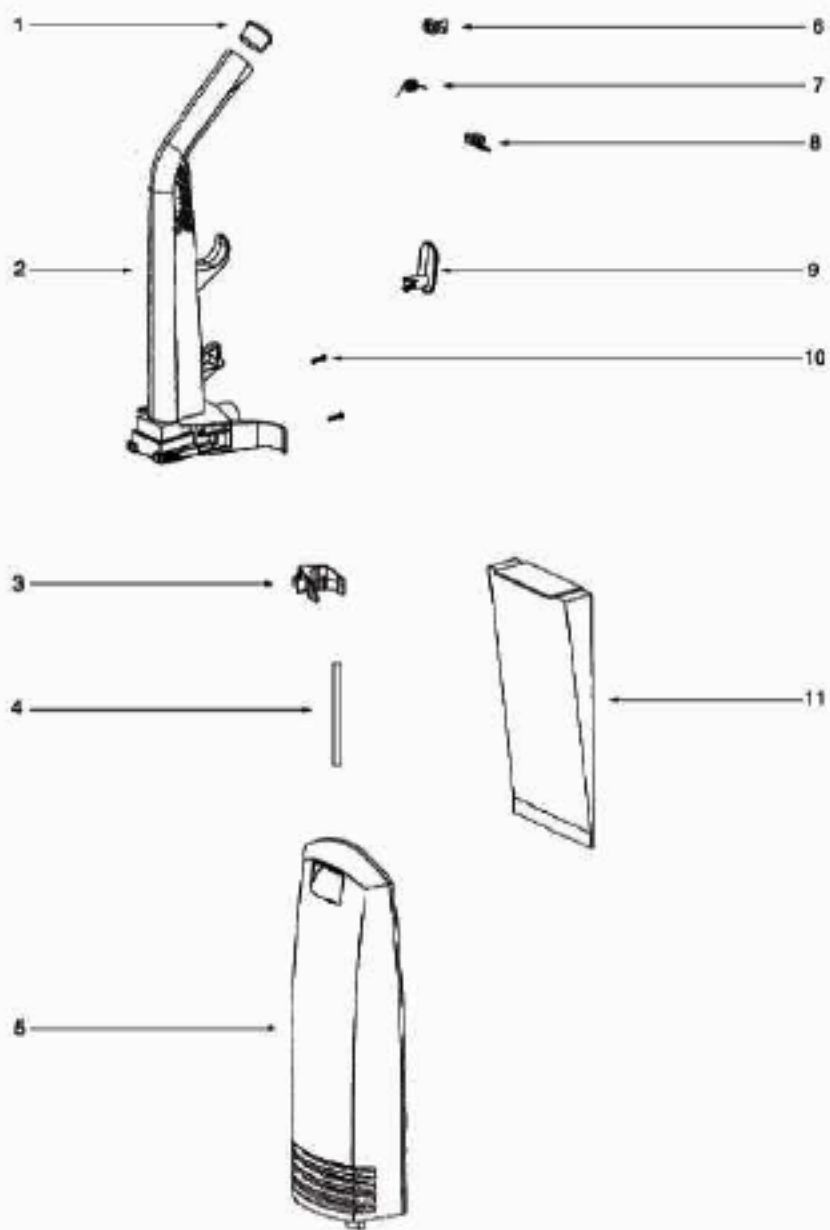


[Find Your Eureka Vacuum Cleaner Parts - Select From 855 Models](#)

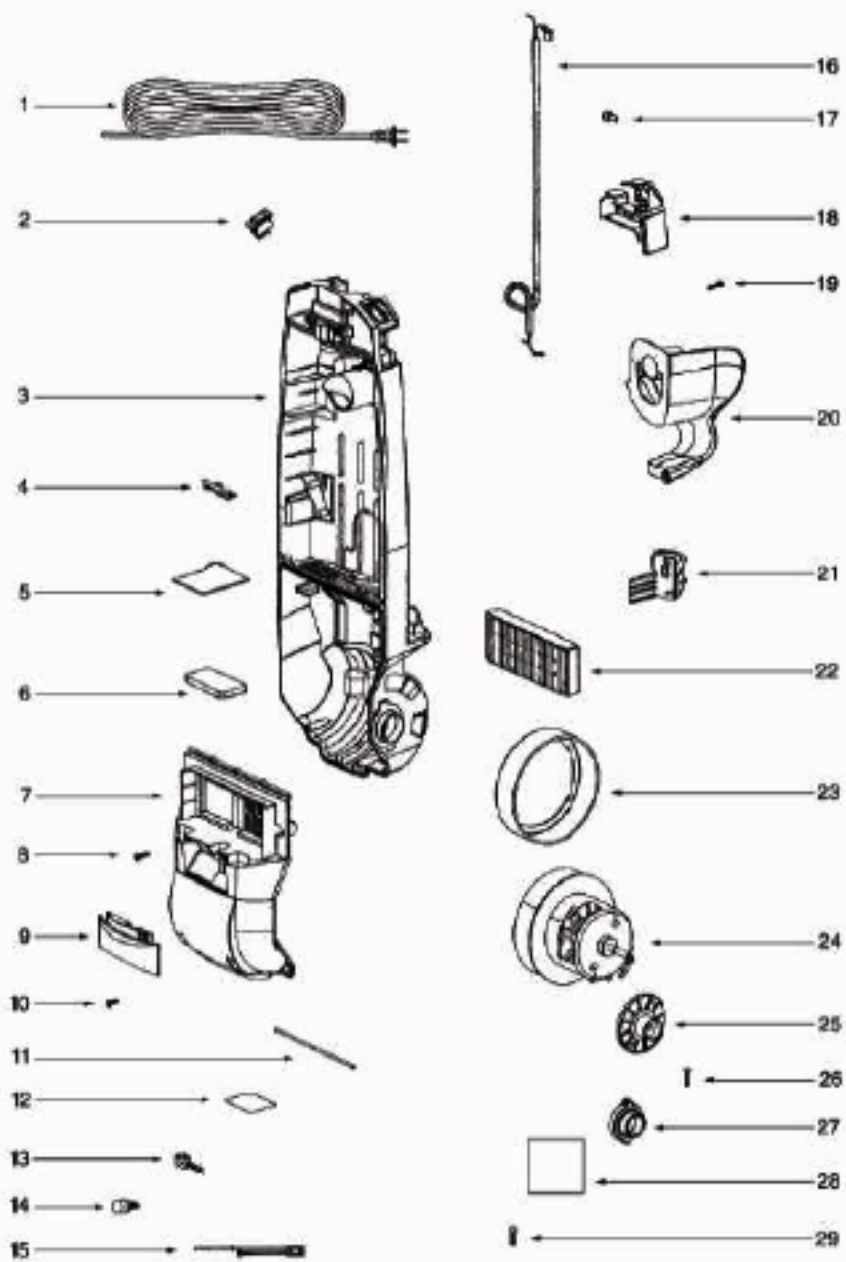
----- Manual continues below part list -----

Available Replacement Parts for Eureka 2900A

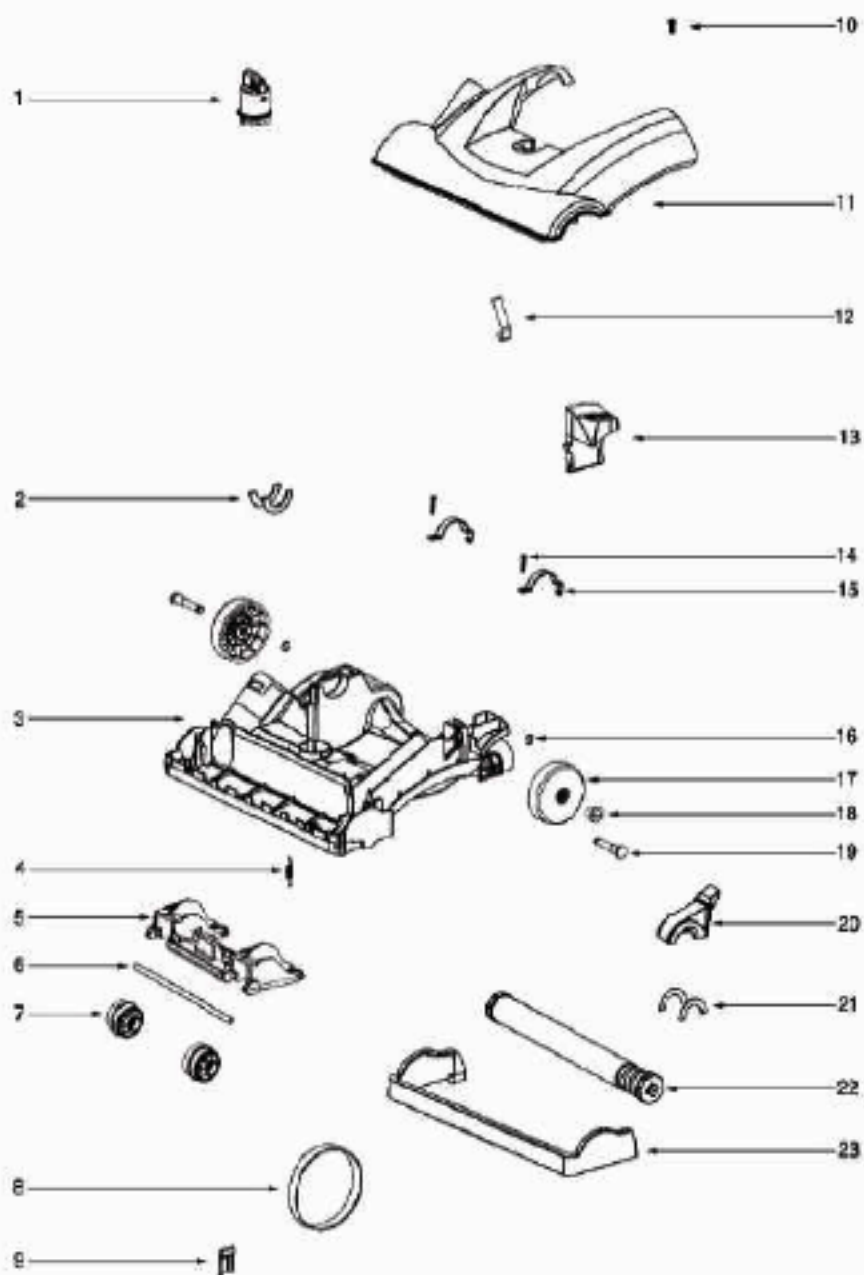
e-39266	BELT OEM EUREKA EXTENED LIFE 1 PACK
E-61850	FILTER HEPA FOR EUREKA 1 PACK
E-71492	WAND, NESTING W/CREVICE TOOL
e-60990-2	BRUSH
E-60844-5	BRUSH ROLL, 12 INCH UPRIGHT



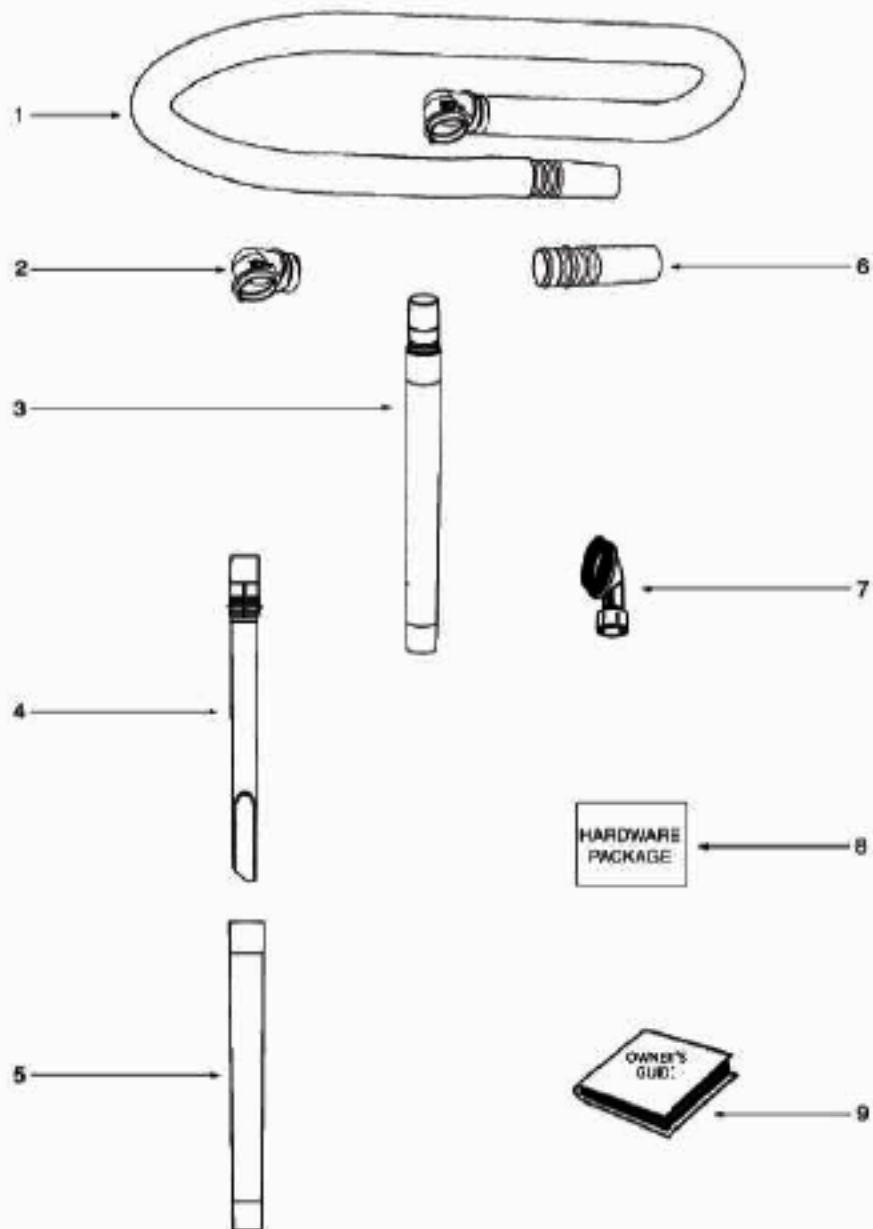
Ref#	Part	Description	Comments	Qty
1	72221-355N	CAP - HANDLE		
2	73291	UPPER HANDLE ASSEMBLY	includes items 1 & 9	
3	72658-355N	CLIP - WAND		
4	73002-1	GASKET		
5	62076-1	BAG CVR & GRPHCS ASSY - P		
6	72539-355N	BRACKET - BAG-IN-PLACE		
7	72455	SPRING - BAG-IN-PLACE		
8	72454-355N	LEVER - BAG-IN-PLACE		
9	70854A-355N	HOOK - CORD		
10	53238-46	SCREW PACKAGE	pkg of 10	
11	61515A	PAPER BAG PACKAGE - STYLE	pkg of 3	



Ref#	Part	Description	Comments	Qty
1	39585-9	SUPPLY CORD & TERMINAL AS		
2	39455-1	SWITCH - ROCKER		
3	73547	REAR HOUSING ASSY		
4	73117-355N	CLIP - FILTER		
5	73225	SHIELD - WIRING		
6	72469	FILTER		
7	62074-1	MOTOR COVER - PACKAGED		
8	53238-27	SCREW PACKAGE	pkg of 10	
9	72468-313N	LENS		
10	54669-2	SCREW PACKAGE	pkg of 10	
11	72522-1	GASKET - MOTOR COVER		
12				
13	38828B-5	HEADLIGHT ASSEMBLY		
14	57940-2	LAMP - HEADLIGHT		
15	61663	THERMOSTAT & TERMINAL ASS		
16	73001	CORD & TERMINAL ASSY		
17	60192-1	WIRE SPLICE 5	pkg of 5	
18	72456-355N	COVER - SWITCH		
19	53238-27	SCREW PACKAGE	pkg of 10	
20	72463-355N	HOSE HOLDER - LOWER		
21	72636-355N	HOOK - HOSE		
22	61860	HEPA FILTER PKG - STYLE H		
23	72476-119N	GASKET - MOTOR CAN		
24	62075-1	MOTOR ASSEMBLY - CTND		
25	72434-119N	MOTOR ASSEMBLY - CTND		
26	62082	SCREW PACKAGE	pkg of 10	
27	72650-119N	BUSHING - MOTOR		
28	73526	SHIELD - MOTOR		
29	61803-3	SCREW PACKAGE	pkg of 5	
30	72443	THERMOSTAT CLIP	(Not illustrated)	



Ref#	Part	Description	Comments	Qty
1	72472-355N	KNOB - HEIGHT ADJUSTMENT		
2	73114	FELT - BASE		
3	62072-1	BASE ASSEMBLY - PACKAGED	Includes 1,2,4,5,6,7,9,12,13,16,17,18 & 19	
4	54943	SPRING PACKAGE	pkg of 10	
5	72521-119N	WHEEL CARRIAGE		
6	71478	AXLE - FRONT		
7	39173-119N	WHEEL - FRONT		
8	61120A	BELT PKG ASSY-(U-EXTENDED)	pkg of 2	
9	38053	GUARD - BELT		
10	54669-2	SCREW PACKAGE	pkg of 10	
11	62073-1	HOOD ASSEMBLY - PACKAGED		
12	71574	SPRING - HANDLE RELEASE		
13	72473-355N	HANDLE RELEASE		
14	53238-27	SCREW PACKAGE	pkg of 10	
15	71487	CLAMP - MOTOR		
16	54432-1	PACKAGE - RETAINING RING	pkg of 10	
17	72117-119N	WHEEL - REAR		
18	72113-1	BUSHING - AXLE		
19	38590A	AXLE - REAR		
20	73289	BELT CAP ASSEMBLY	includes item 21	
21	73114	FELT - BASE		
22	60251-3	12" DISTURBULATOR ASSY -		
23	72474-355N	FURNITURE GUARD		



Ref#	Part	Description	Comments	Qty
1	62071-1	HOSE ASSY	includes items 2 & 6	
2	72459-313N	ADAPTER - HOSE		
3	71492A	NESTING WAND ASSEMBLY	includes items 4 & 5	
4	71956A-355N	WAND - CREVICE		
5	71973-119N	WAND - OUTER		
6	28472A-355N	COUPLING - HOSE		
7	60990-2	COMBINATION BRSH BRSTLD-C		
8	73012	PACKAGE - HARDWARE		