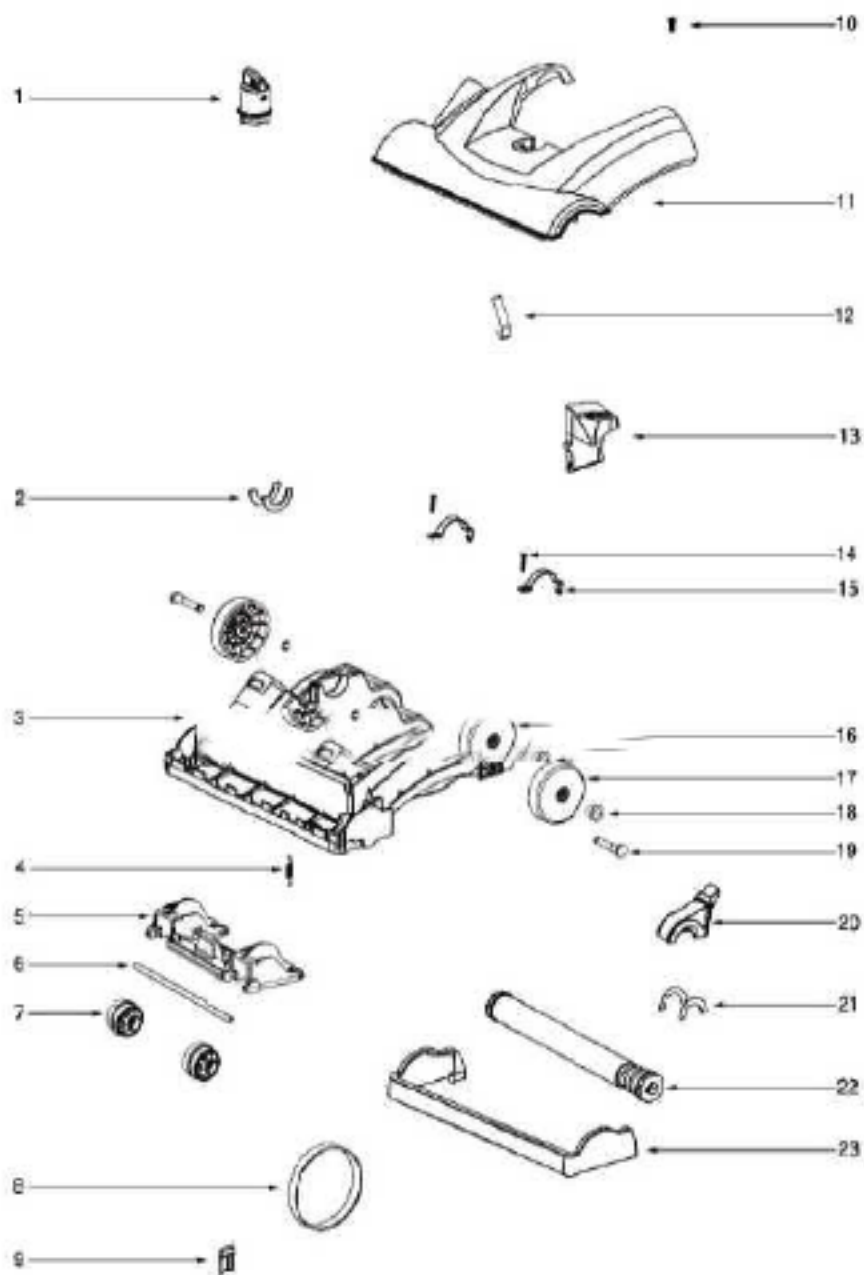
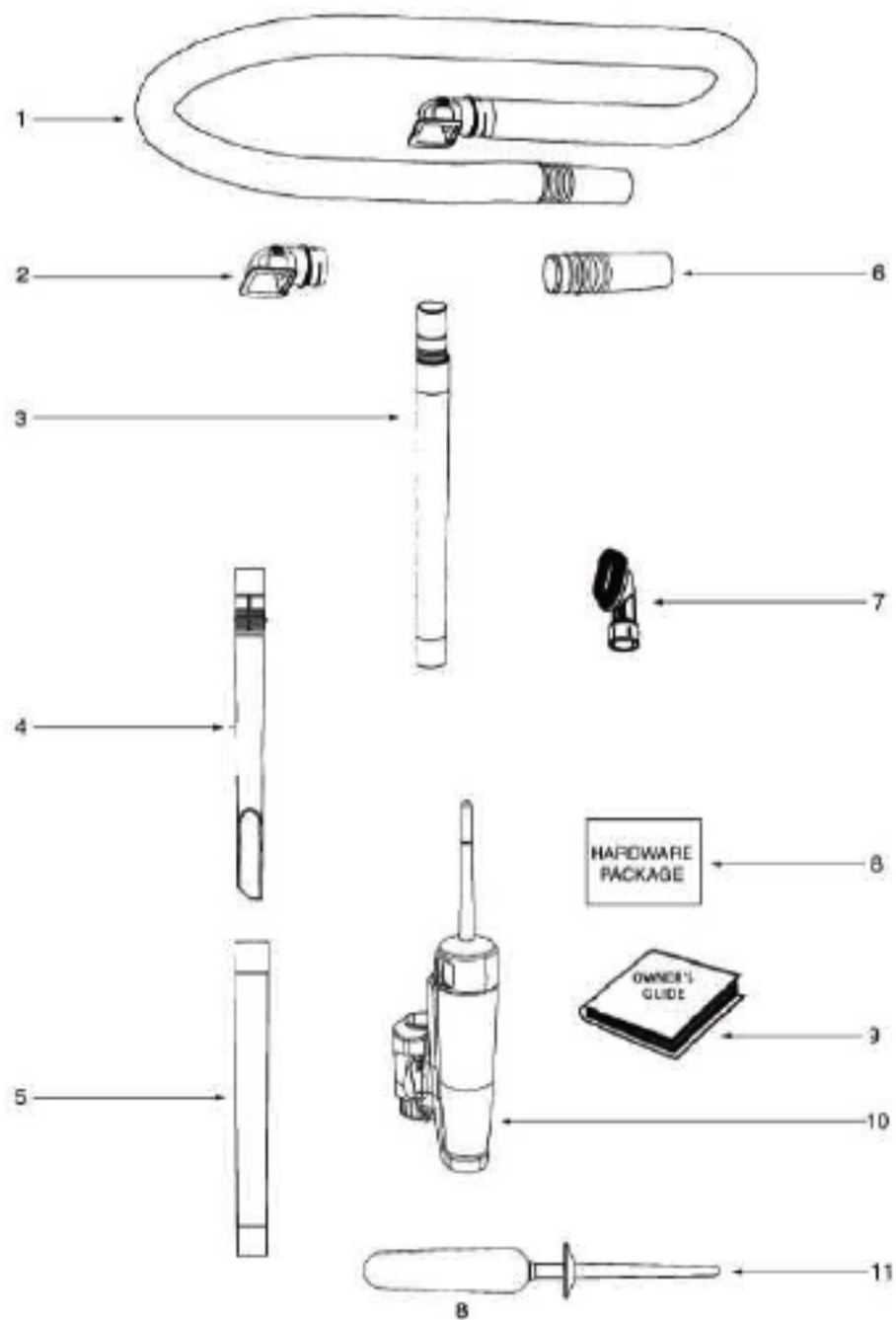


Ref#	Part	Description	Comments	Qty
1	72221-355N	CAP - HANDLE		
2	73448	UPPER HANDLE ASSEMBLY (DU	Includes items 1 & 9.	
3	72658-355N	CLIP - WAND		
4	73002-1	GASKET		
5	62076-5	BAG CVR & GRPHCS ASSY - P		
6	72539-355N	BRACKET - BAG-IN-PLACE		
7	72455	SPRING - BAG-IN-PLACE		
8	72454-355N	LEVER - BAG-IN-PLACE		
9	39977-355N	HOOK - CORD		
10	53238-46	SCREW PACKAGE		
11	61515A	PAPER BAG PACKAGE - STYLE		



Ref#	Part	Description	Comments	Qty
1	72472-355N	KNOB - HEIGHT ADJUSTMENT		
2	73114	FELT - BASE		
3	62072-1	BASE ASSEMBLY - PACKAGED	Includes items 1,2,4,5,6,7,9,12,13,16,17,18 & 19	
4	54943	SPRING PACKAGE	Pkg. of 10	
5	72521-119N	WHEEL CARRIAGE		
6	71478	AXLE - FRONT		
7	39173-119N	WHEEL - FRONT		
8	61120A	BELT PKG ASSY-STYLE U EXT	Pkg. of 2	
9	38083	GUARD - BELT		
10	54669-2	SCREW PACKAGE	Pkg. of 10	
11	62073-2	HOOD ASSEMBLY - PACKAGED		
12	71574	SPRING - HANDLE RELEASE		
13	72473-355N	HANDLE RELEASE		
14	53238-27	SCREW PACKAGE	Pkg. of 10	
15	71487	CLAMP - MOTOR		
16	54432-2	PACKAGE - RETAINING RING	Pkg. of 10	
17	72117-119N	WHEEL - REAR		
18	72113-1	BUSHING - AXLE		
19	38590A	AXLE - REAR		
20	73289	BELT CAP ASSEMBLY	Includes item 21	
21	73114	FELT - BASE		
22	60844-5	12" DISTURBULATOR ASSY -		
23	72474-355N	FURNITURE GUARD		



Ref#	Part	Description	Comments	Qty
1	62293-1	HOSE ASSEMBLY - CARTONED	Includes items 2 & 6	
2	72459-313N	ADAPTER - HOSE		
3	71492A	NESTING WAND ASSEMBLY	Includes items 4 & 5.	
4	71956A-355N	WAND - CHEVICE		
5	71973-119N	WAND - OUTER		
6	70559A-355N	COUPLING - HOSE		
7	60990-2	COMBINATION BRSH BRSTLD-C		
8	73012	PACKAGE - HARDWARE		
9	73286			
10	72293-5	ELECTROSTATIC DUSTER ASSE		
11	73594	DUSTER ASSEMBLY		