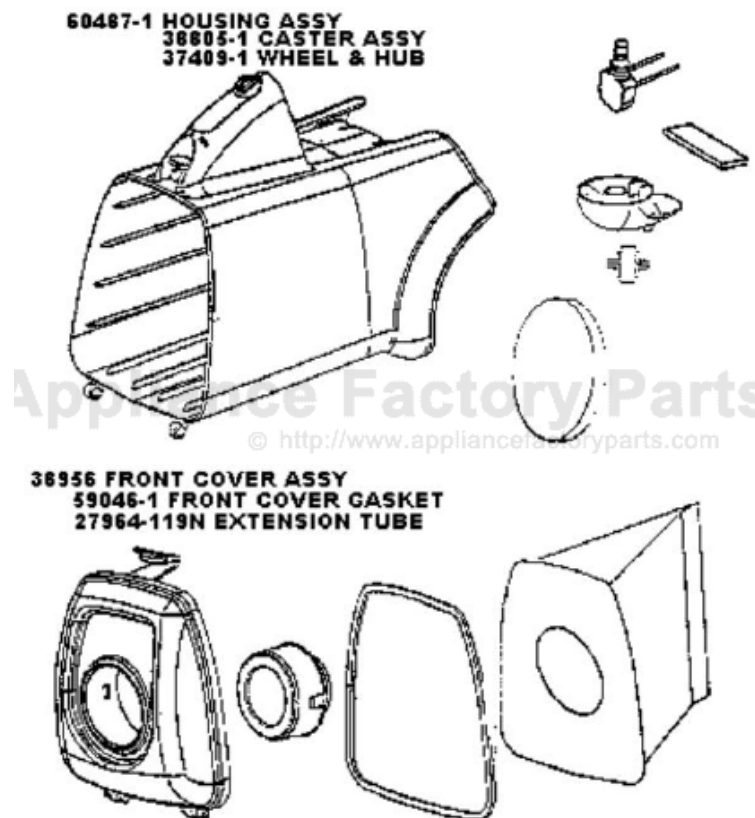


This Owner's Manual is provided and hosted by [Appliance Factory Parts](http://www.appliancefactoryparts.com).



# Eureka 3676A Owner's Manual

[Shop genuine replacement parts for Eureka 3676A](#)



[Find Your Eureka Vacuum Cleaner Parts - Select From 855 Models](#)

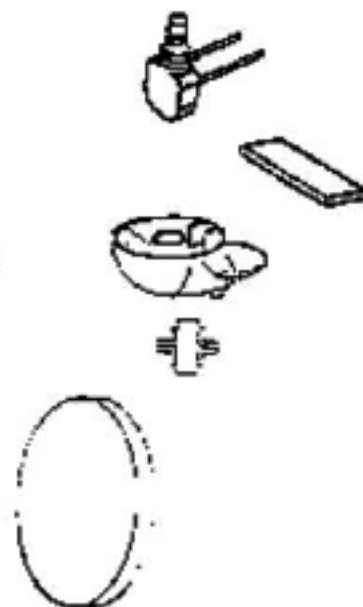
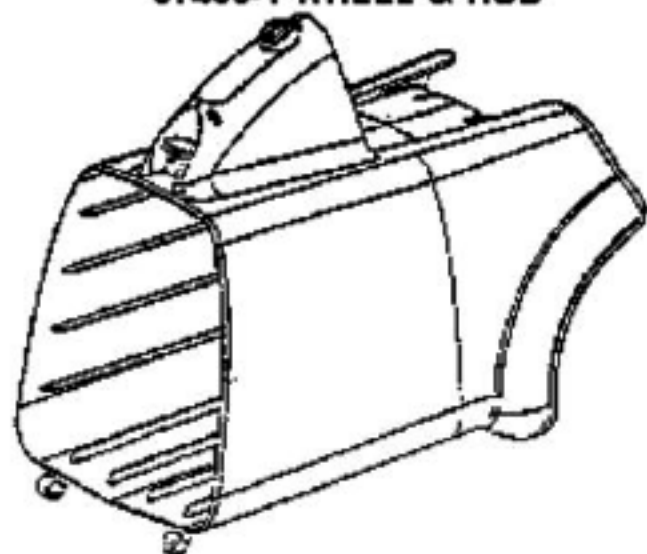
----- Manual continues below part list -----

## Available Replacement Parts for Eureka 3676A

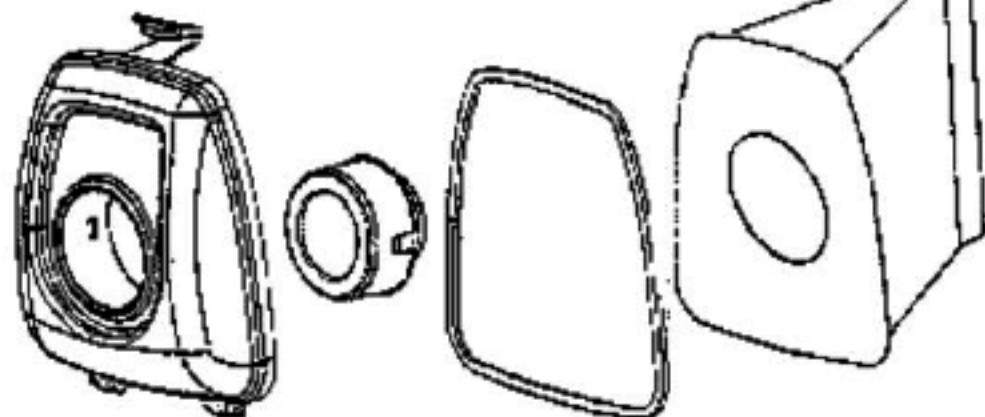
[E-38333](#)

FILTER, BAG 1PK

**60487-1 HOUSING ASSY**  
**36805-1 CASTER ASSY**  
**37409-1 WHEEL & HUB**



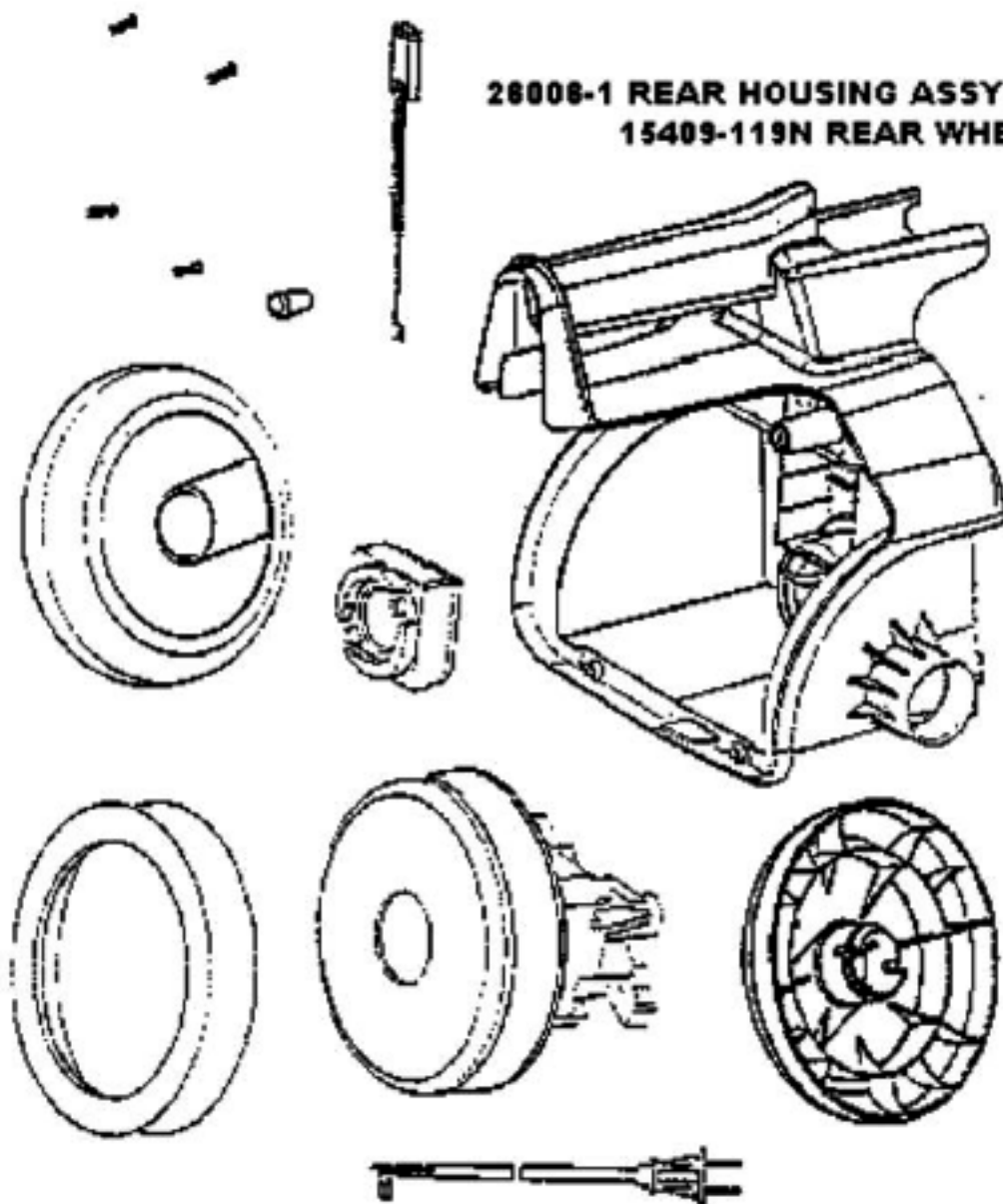
**36956 FRONT COVER ASSY**  
**59046-1 FRONT COVER GASKET**  
**27964-119N EXTENSION TUBE**



## PARTS1 - 3676A

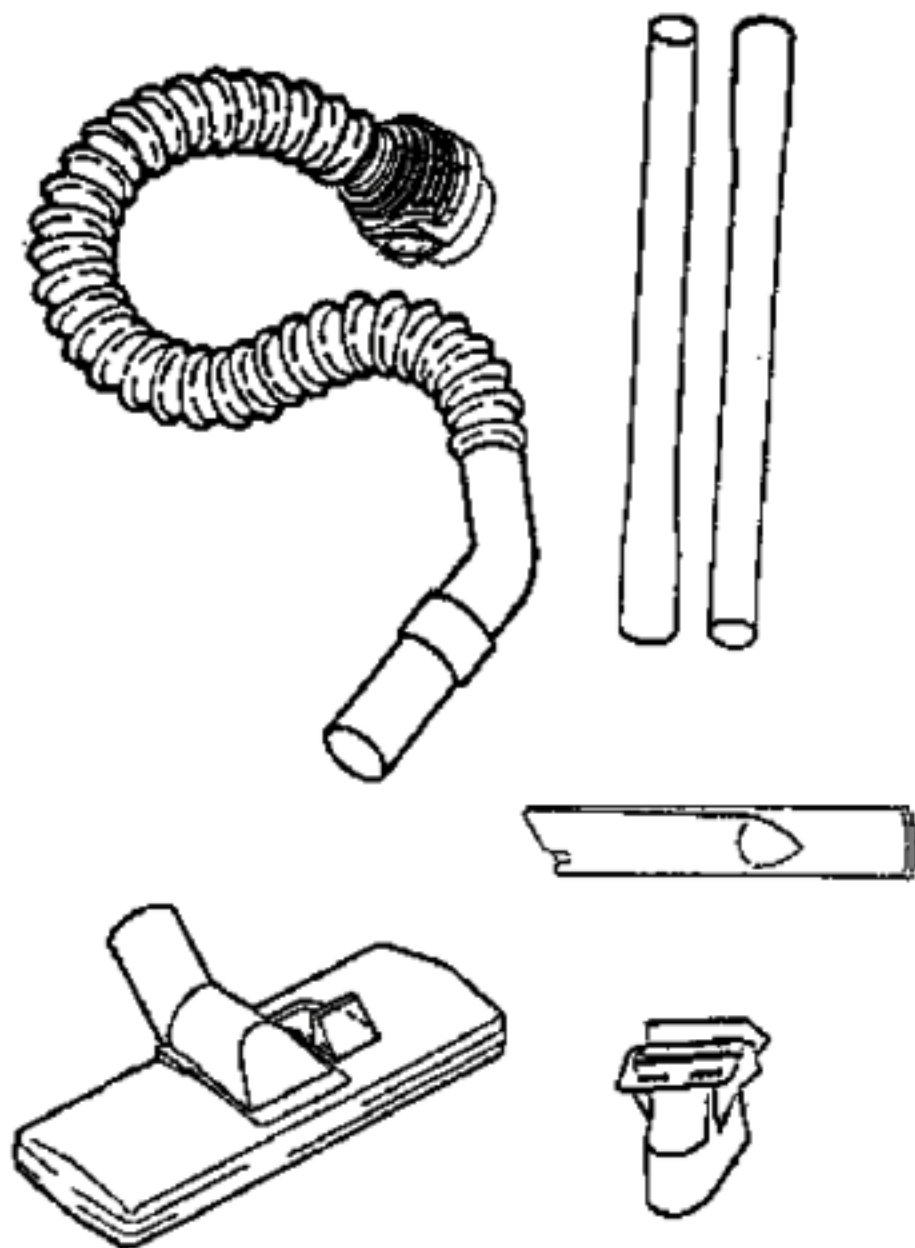
Ref #	Part	Description	Comments	Qty
1	15376-5	SWITCH ASSY		
2	27964-119N	EXTENSION TUBE		
3	37409-1	WHEEL-CASTER		
4	38333	FILTER		
5	38805-1	CASTOR ASSY.		
6	59045-1	GASKET FRONT COVER		
7	59206	GASKET - FOAM		
8	60295	PAPER BAG PKG ASSY 3MM		
9	60487-1	HOUSING ASSEMBLY - PACKAG		

**28008-1 REAR HOUSING ASSY**  
**15409-119N REAR WHEEL**



## PARTS2 - 3676A

Ref #	Part	Description	Comments	Qty
1	15409-119N	Discontinued, use 15409A-119N		
2	27985	MOTOR BUSHING		
3	28008-1	REAR HOUSING ASSEMBLY		
4	28032	GASKET - MOTOR M (28715A		
5	59154	SCREW PKG		
6	59190	THERMOSTAT & TERMINAL ASS		
7	59191A	CORD TERMINAL ASSY.		
8	60192-1	WIRE SPLICE 5 (53214-2)		
9	60445	MOTOR ASSY - CRTND		



## ACCESSORIES - 3676A

Ref #	Part	Description	Comments	Qty
1	15355-119N	COUPLING		
2	26193-1	CURVED HANDLE ASSEMBLY		
3	37653-3	BLEEDER		
4	54723	Discontinued, use 14070-3		
5	54780	CREVICE TOOL-use 27238-3		
6	54784	Discontinued, use 61037		
7	54862	DEL CARP/BARE FL NZ		
8	60289-1	HOSE ASSY 3600'S (61118-1		