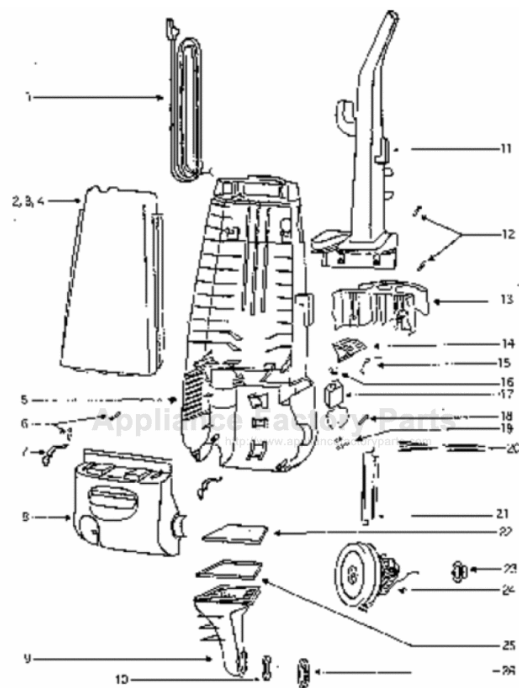


This Owner's Manual is provided and hosted by [Appliance Factory Parts](#).



Eureka 4337ATH Owner's Manual

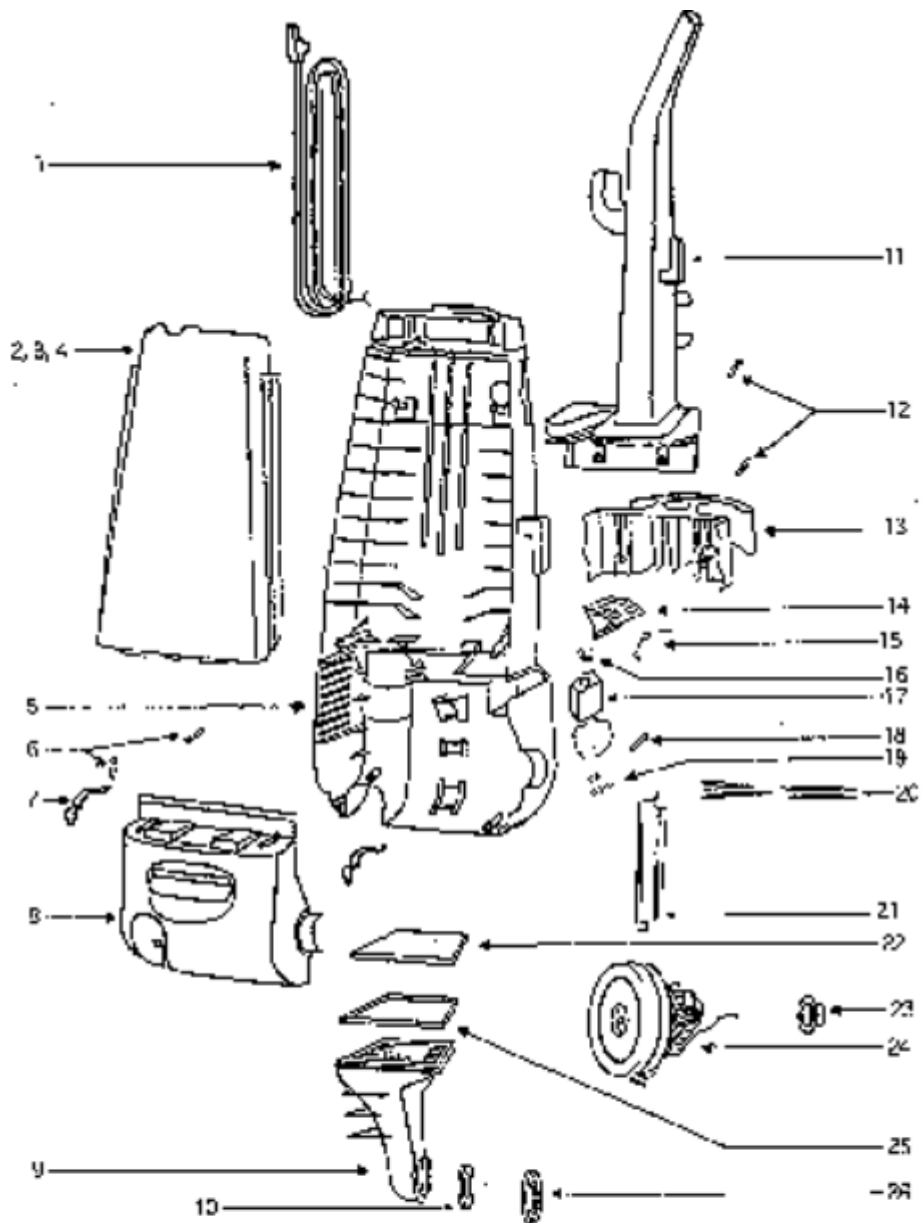
[Shop genuine replacement parts for Eureka 4337ATH](#)



- NOT ILLUSTRATED
- | | |
|----------------------|--------------------------------|
| 28425 AIRDUCT GRILLE | 2. 54936-77 BAG COVER ASSEMBLY |
| 38678-119N PLUNGER | 58505 BAG COVER GASKET |
| 55794 SPRING | 38613 BAG COVERGASKET - BOTTOM |
| 29762 GASKET | |
| 38661 SOUND FOAM | |
| 38688 MOTOR SHIELD | |

[Find Your Eureka Vacuum Cleaner Parts - Select From 853 Models](#)

----- Manual continues below -----



NOT ILLUSTRATED

28425 AIRDUCT GRILLE

38678-119N PLUNGER

55794 SPRING

29762 GASKET

38661 SOUND FOAM

38688 MOTOR SHIELD

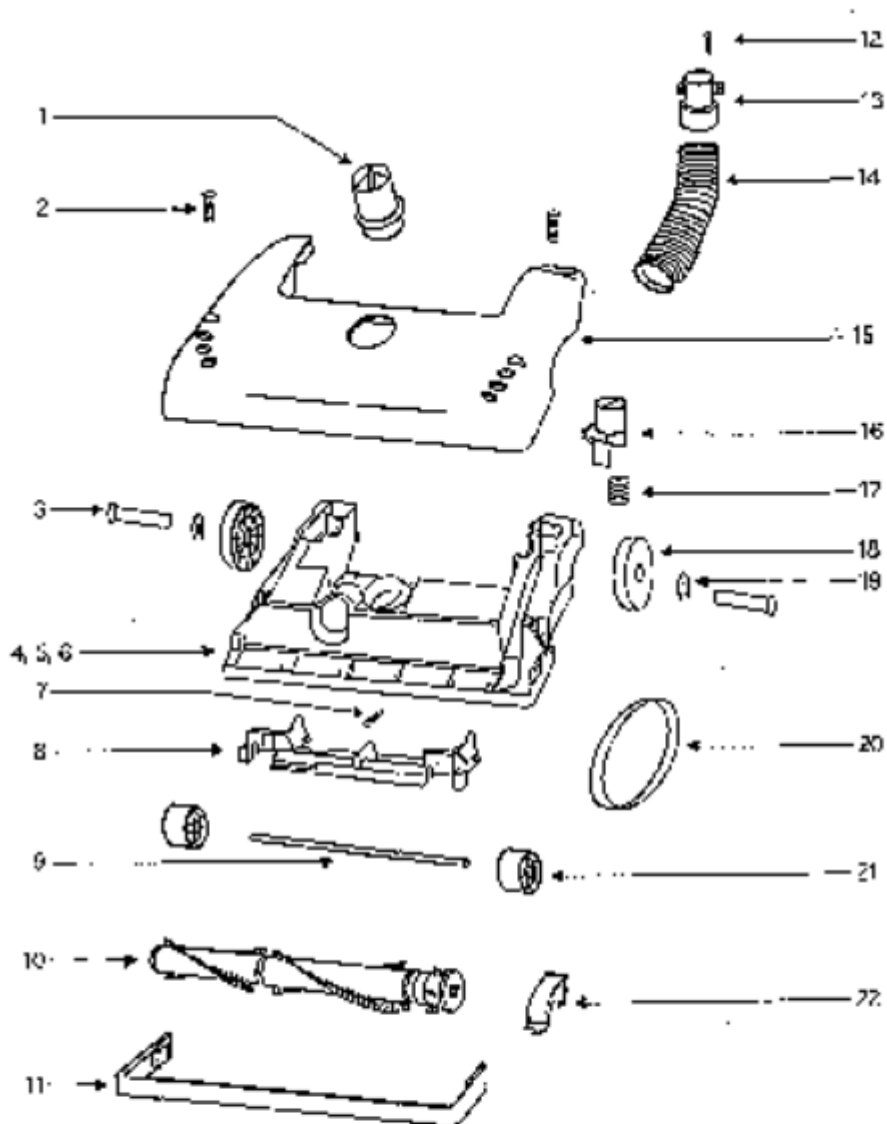
2. 54936-77 BAG COVER ASSEMBLY

58505 BAG COVER GASKET

38613 BAG COVERGASKET - BOTTOM

PARTS2 - 4337ATH

Ref #	Part	Description	Comments	Qty
1	02093A-119N	CADDY - TOOL		
2	15536A-119N	AIR DUCT		
3	27171A	GASKET		
4	27474C-288N	SWITCH - BUTTON		
5	27552B	GROMMET		
6	27962	GASKET (NLA)		
7	28304A	SWITCH - PUSHBUTTON		
8	28425	GRILLE - AIR DUCT		
9	38420-2	CLAMP		
10	38613	GASKET		
11	38614	EXHAUST - FILTER		
12	38661	FOAM - SOUND		
13	38678-119N	PLUNGER		
14	38680-16	SUPPLY CORD & TERMINAL AS		
15	38688	MOTOR SHIELD (NLA)		
16	39023	FLANGE - MOTOR INTAKE		
17	39252-2	THERMOSTAT & TERMINAL ASS		
18	39334	FILTER - PRE-MOTOR		
19	53197-1	SCREW PACKAGE		
20	54936-77	BAG COVER ASSY - PACKAGED		
21	55794	SPRING		
22	58505	GASKET - BAG COVER		
23	59297SV	GASKET - AIR DUCT		
24	60126-15	REAR HOUSING - PACKAGED		
25	60134	TORS SPRING PKG		
26	60192-1	WIRE SPLICE 5		
27	60788-22	MOTOR COVER ASSEMBLY - PK		
28	60845	MOTOR ASSEMBLY - CARTONED		
29	70521	RETAINING RING PKG		
30	71139-1	HANDLE & CAP ASSEMBLY		



4. 60843-8 BASE ASSEMBLY

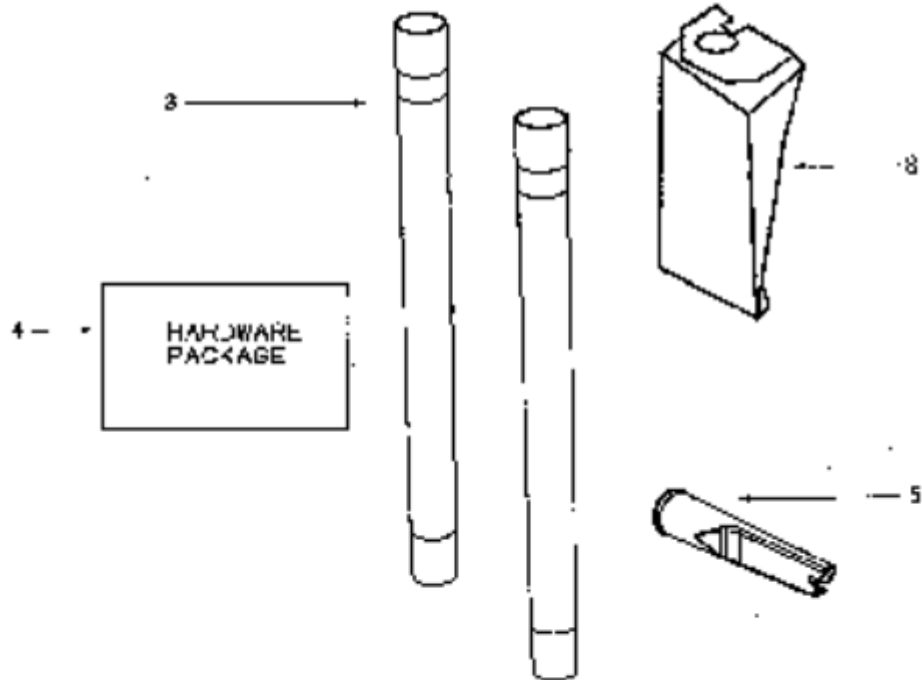
- 27462C-288N HEIGHT ADJUSTMENT KNOB
- 38590A REAR AXLE
- 58506-1 GASKET
- 57569 FELT GASKET (BELT CAP)
- 54943 SPRING
- 14993C-119N WHEEL CARRIAGE
- 58206-1 WHEEL AXLE
- 15237-288N FURNITURE GUARD
- 39260A-288N REAR WHEEL
- 39173-119N FRONT WHEEL

PARTS1 - 4337ATH

Ref #	Part	Description	Comments	Qty
1	14993C-119N	CARRIAGE - WHEEL		
2	15237-288N	GUARD - FURNITURE (12")		
3	27462C-288N	OPERATOR - HEIGHT ADJUSTM		
4	27467A-288N	RELEASE - HANDLE		
5	27468D-119N	CUFF - HOSE		
6	38479-4	HOSE - COMPRESSION (PURCH		
7	38590A	AXLE - REAR		
8	39173-119N	WHEEL-FRONT use 39173A-119N		
9	39260A-288N	WHEEL/BUSHING PACKAGE		
10	53197-1	SCREW PACKAGE		
11	54376-2	BELT CAP & GASKET - PACKA		
12	54432	PACKAGE - RETAINING RING		
13	54933-49	HOOD ASSEMBLY - PACKAGED		
14	54943	SPRING PACKAGE		
15	57569	GASKET - FELT		
16	58206-1	AXLE - WHEEL		
17	58506-1	GASKET		
18	60133	COMPRESSION SPRING - PACK		
19	60251-2	12" DISTURBULATOR ASSY -		
20	54312B	BELT PACKAGE ASSEMBLY (U)		
21	60843-8	BASE ASSEMBLY - CARTONED		



NOT ILLUSTRATED
70262A OWNERS GUIDE



- 1. 61028-1 HOSE ASSEMBLY
- 27461B-119N HOSE ADAPTER
- 37057A-3 HOSE COUPLING

Ref #	Part	Description	Comments	Qty
1	13104-4	WAND-STRAIGHT		
2	26708-119N	TOOL - CREVICE		
3	27461B-119N	ADAPTER - HOSE		
4	37057A-3	COUPLING - HOSE		
5	58607	SCREW PACKAGE		
6	58623A	FILTRE AIRE STYLE "AA"		
7	61028-1	HOSE ASSEMBLY - CARTONED		
8	61037	COMBINATION TOOL - PACKAG		
9	70262A	OWNER'S GUIDE		