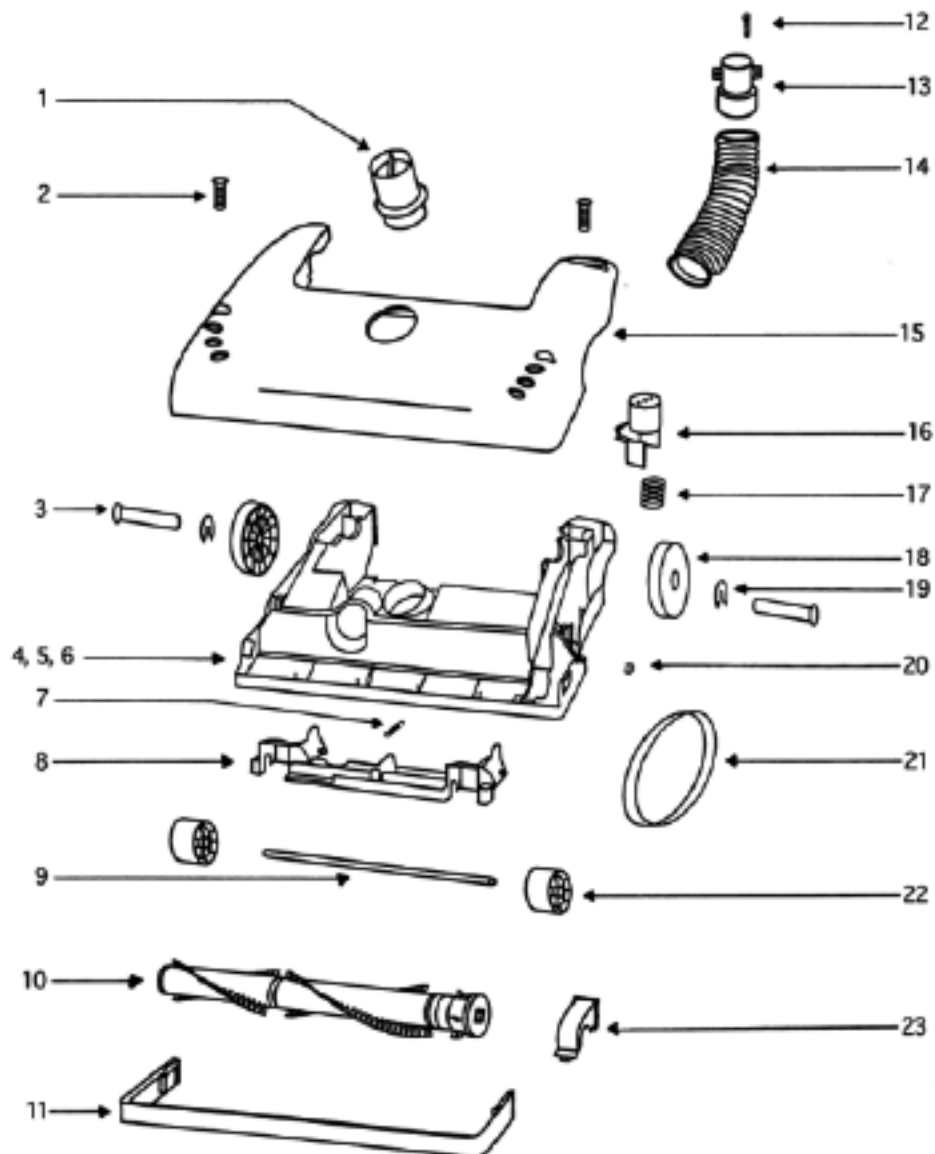


PARTS 2 - 4387AT

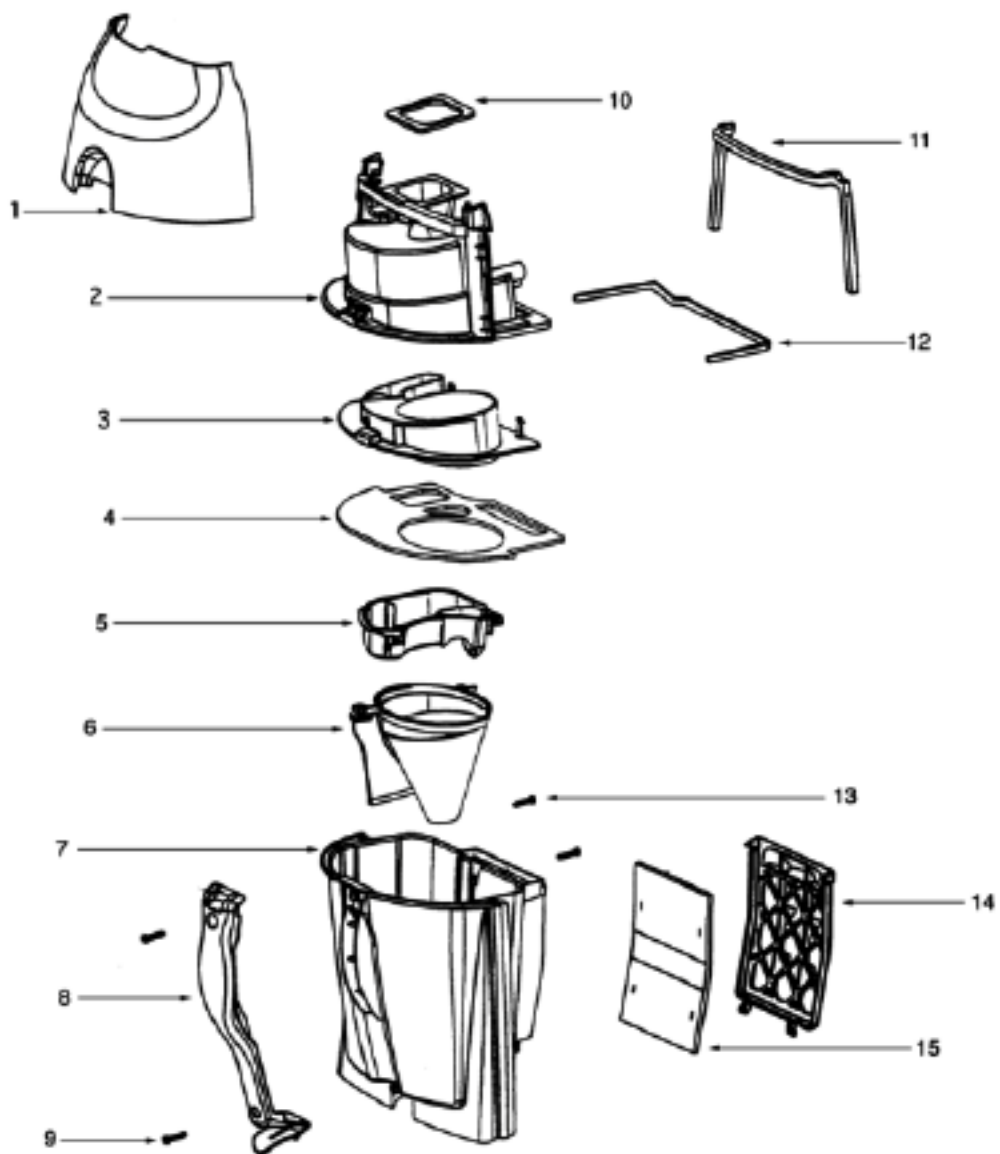
| Ref # | Part | Description | Comments | Qty |
|-------|-------------|----------------------------|----------|-----|
| 1 | 38680-19 | SUPPLY CORD & TERMINAL ASS | | |
| 2 | 60703-3 | REAR HOUSING - PKGD | | |
| 3 | 53197-1 | SCREW PACKAGE | | |
| 4 | 38420-2 | CLAMP | | |
| 5 | 61432-2 | MOTOR COVER ASSY W/O LENS | | |
| 6 | 48815 | LAMP - HEADLIGHT | | |
| 7 | 38601-312N | MOTOR COVER - PKGD | | |
| 8 | 60068-2 | SCREW PACKAGE | | |
| 9 | 15072-313N | LENS - MOTOR COVER | | |
| 10 | 15408B-119N | DUCT - AIR | | |
| 11 | 27171A | GASKET | | |
| 12 | 71139-1 | HANDLE & CAP ASSEMBLY | | |
| 13 | 15443-119N | TOOL CADDY | | |
| 14 | 27474C-289N | SWITCH - BUTTON | | |
| 15 | 60134 | TORS SPRING PKG | | |
| 16 | 60165-1 | RETAINING RING PKG | | |
| 17 | 28304A | SWITCH - PUSHBUTTON | | |
| 18 | 60192-1 | WIRE SPLICE 5 | | |
| 19 | 39252-2 | THERMOSTAT & TERMINAL ASS | | |
| 20 | 59362B | TUBE | | |
| 21 | 59361A | ADAPTER - TUBE | | |
| 22 | 60285B | HEPA FILTER PACKAGE | | |
| 23 | 61333 | MOTOR FILTER PACKAGE | | |
| 24 | 27552B | GROMMET | | |
| 25 | 60625-4 | HEPA MOTOR & SHROUD ASSY | | |
| 26 | 59137 | GASKET - MOTOR EXHAUST | | |
| 27 | 59297SV | GASKET - AIR DUCT | | |
| 28 | 39023 | FLANGE - MOTOR INTAKE | | |
| 29 | 28425 | GRILLE - AIR DUCT | | |

PARTS 1 - 4387AT



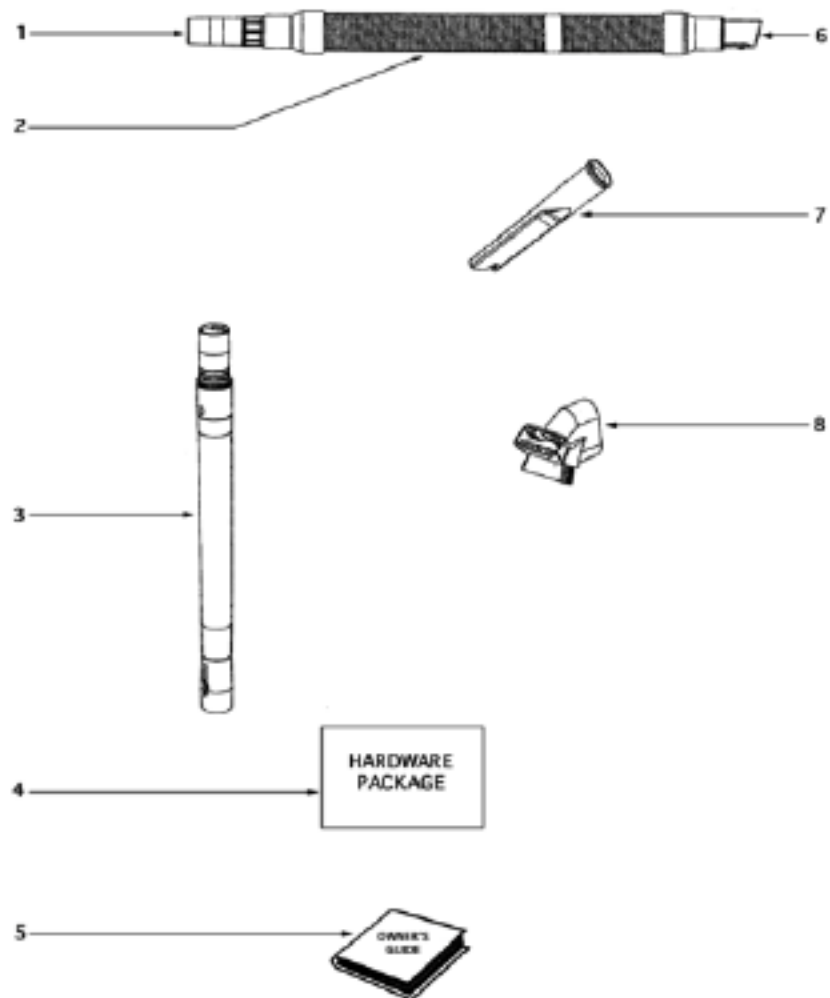
PARTS 1 - 4367AT

| Ref # | Part | Description | Comments | Qty |
|-------|-------------|---------------------------|----------|-----|
| 1 | 27462E-288N | OPERATOR - HEIGHT ADJUSTM | | |
| 2 | 53197-1 | SCREW PACKAGE | | |
| 3 | 38590A | AXLE - REAR | | |
| 4 | 60843-10 | BASE ASSEMBLY - CARTONED | | |
| 5 | 58506-1 | GASKET | | |
| 6 | 57569 | GASKET - FELT | | |
| 7 | 54943 | SPRING PACKAGE | | |
| 8 | 14993C-119N | CARRIAGE - WHEEL | | |
| 9 | 71551 | AXLE - WHEEL | | |
| 10 | 60251-3 | 12" DISTURBULATOR ASSY - | | |
| 11 | 15237-288N | GUARD - FURNITURE (12") | | |
| 12 | 27468C-119N | CUFF - HOSE | | |
| 13 | 38479-4 | HOSE - COMPRESSION (PURCH | | |
| 14 | 54833-59 | HOOD ASSEMBLY - PACKAGED | | |
| 15 | 27467A-288N | RELEASE - HANDLE | | |
| 16 | 60133 | COMPRESSION SPRING - PACK | | |
| 17 | 39260B-288N | WHEEL/BUSHING PACKAGE | | |
| 18 | 54432 | PACKAGE - RETAINING RING | | |
| 19 | 60613 | PUSH ON NUT PKG | | |
| 20 | 61120 | BELT PKG ASSY-STYLE U EXT | | |
| 21 | 39173A-119N | WHEEL - FRONT | | |



PARTS 3 - 4387AT

| Ref # | Part | Description | Comments | Qty |
|-------|-------------|------------------------------|----------|-----|
| 1 | 60704-37 | FRONT COVER ASSEMBLY - PK | | |
| 2 | 60705-5 | UPPER CYCLONE ASSY - PKGD | | |
| 3 | 39219B-1 | CYCLONE GASKET SHEET | | |
| 4 | 28099B-333N | FILTER - SCREEN | | |
| 5 | 02311A-333N | FUNNEL - CYCLONE (02311-333N | | |
| 6 | 60706-3 | CYCLONIC CASSETTE ASSY | | |
| 7 | 28131-288N | GRIP - DIRT CUP | | |
| 8 | 53197-1 | SCREW PACKAGE | | |
| 9 | 59595-1 | GASKET - CYCLONE | | |
| 10 | 59297-2SV | GASKET - AIR DUCT | | |
| 11 | 28114-119N | FRAME - FILTER | | |
| 12 | 60696 | FILTER PACKAGE | | |



ACCESSORIES - 4387AT

| Ref # | Part | Description | Comments | Qty |
|-------|-------------|---------------------------|----------|-----|
| 1 | 37057A-3 | COUPLING - HOSE | | |
| 2 | 61028-1 | HOSE ASSEMBLY - CARTONED | | |
| 3 | 58728 | NESTING WAND ASSEMBLY | | |
| 4 | 58607 | SCREW PACKAGE | | |
| 5 | 70239B | OWNERS GUIDE | | |
| 6 | 27461B-119N | ADAPTER - HOSE | | |
| 7 | 26708-119N | TOOL - CREVICE | | |
| 8 | 61037 | COMBINATION TOOL - PACKAG | | |