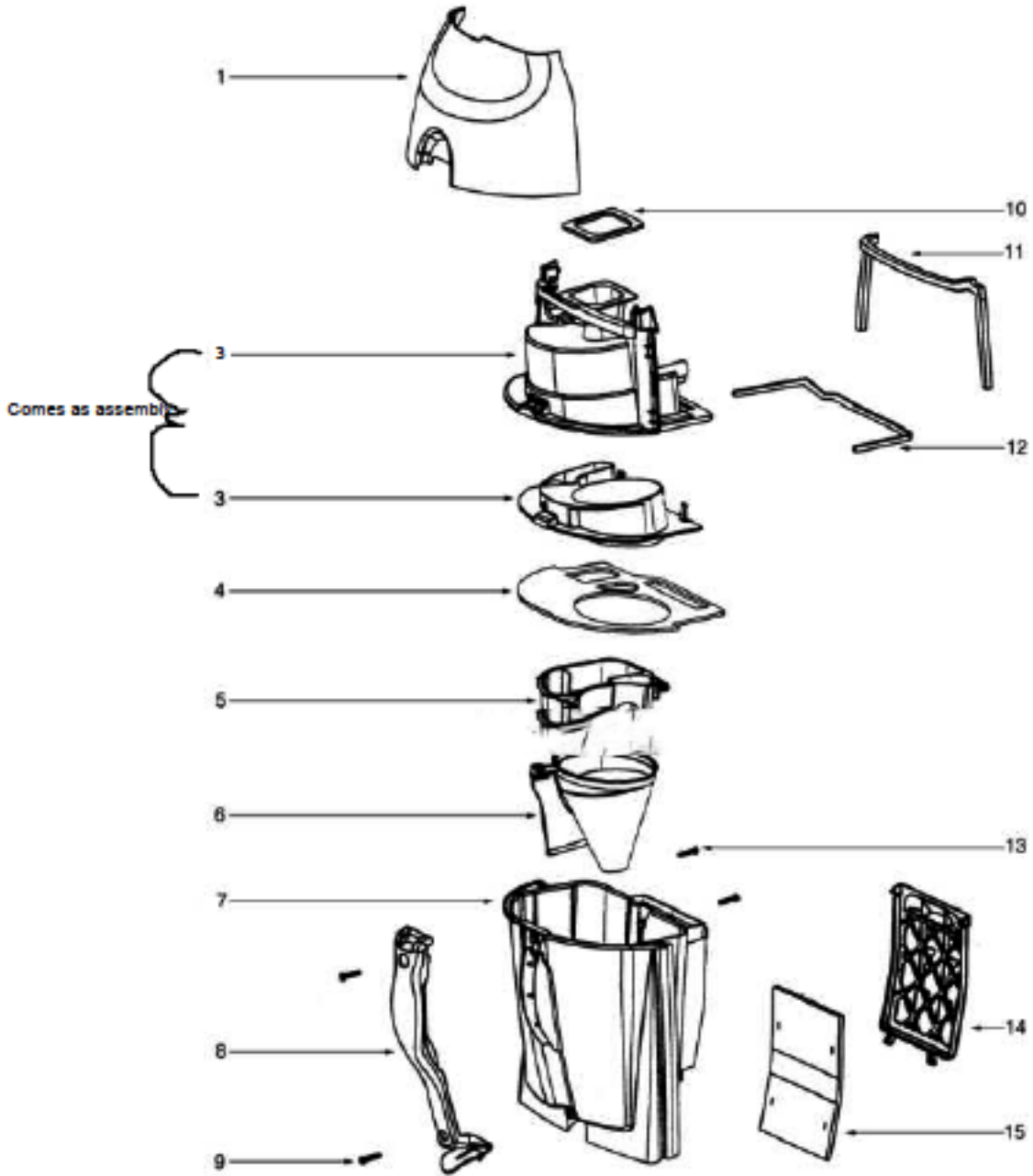
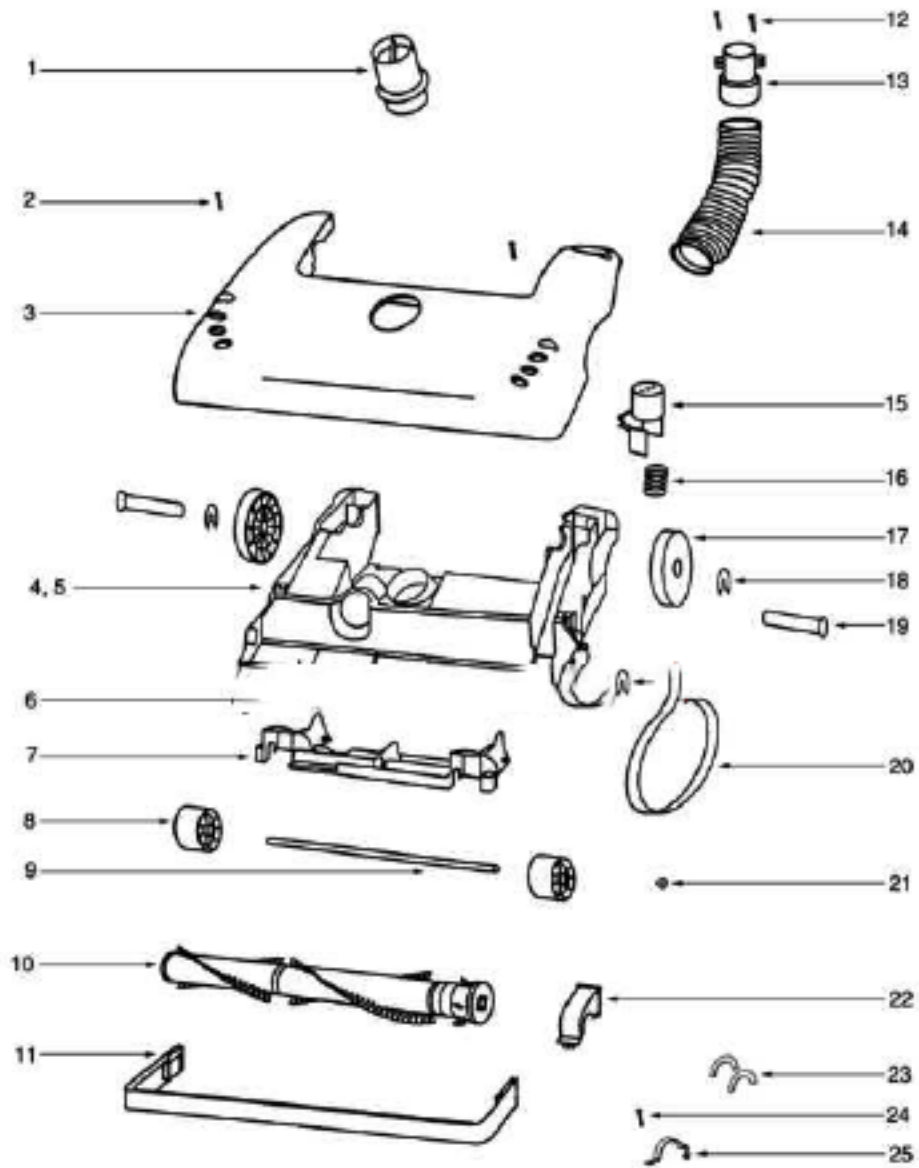


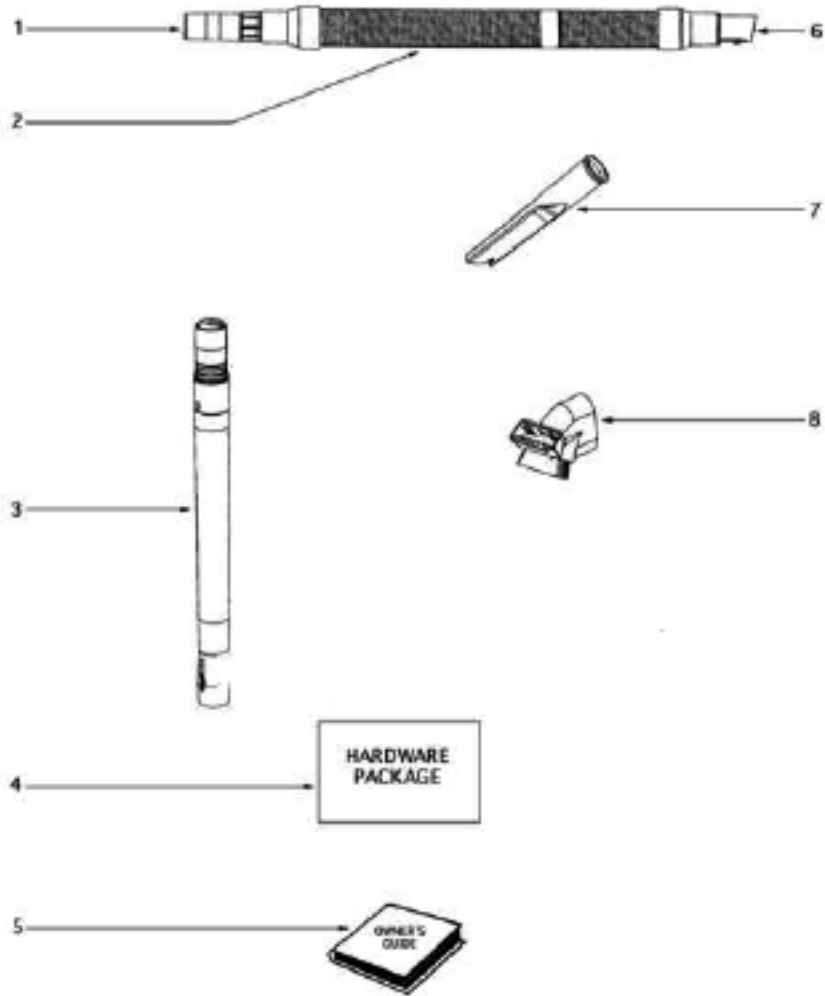
| Ref# | Part | Description | Comments | Qty |
|------|-------------|---------------------------|----------|-----|
| 1 | 38680-16 | SUPPLY CORD & TERMINAL AS | | |
| 2 | 28456-6 | FILTER FRAME & GRAPHICS A | | |
| 3 | 61500 | HEPA FILTER PKG - STYLE H | | |
| 4 | 71608A-119N | HOUSING - REAR | | |
| 5 | 60788-21 | MOTOR COVER ASSEMBLY - PK | | |
| 6 | 53197-1 | SCREW PACKAGE | | |
| 7 | 60261-11 | MOTOR ASSEMBLY - PACKAGED | | |
| 8 | 38482A-119N | CAP - HANDLE | | |
| 9 | 71139-1 | HANDLE & CAP ASSEMBLY | | |
| 10 | 54669-4 | SCREW PACKAGE | | |
| 11 | 53197-4 | SCREW PACKAGE | | |
| 12 | 15443B-119N | TOOL CADDY | | |
| 13 | 27474C-288N | SWITCH - BUTTON | | |
| 14 | 60134 | TORS SPRING PKG | | |
| 15 | 28304A | SWITCH - PUSHBUTTON | | |
| 16 | 60165-1 | RETAINING RING PKG | | |
| 17 | 39252-2 | THERMOSTAT & TERMINAL ASS | | |
| 18 | 61333 | MOTOR FILTER PACKAGE | | |
| 19 | 28425 | GRILLE - AIR DUCT | | |
| 20 | 59297SV | GASKET - AIR DUCT | | |
| 21 | 15536A-119N | AIR DUCT | | |
| 22 | 27171A | GASKET | | |
| 23 | 39023 | FLANGE - MOTOR INTAKE | | |



| Ref# | Part | Description | Comments | Qty |
|------|-------------|---------------------------|----------|-----|
| 1 | 60704-38 | FRONT COVER ASSEMBLY - PK | | |
| 3 | 60705-5 | UPPER CYCLONE ASSY - PKGD | | |
| 4 | 39219B-1 | CYCLONE GASKET SHEET | | |
| 5 | 28099B-333N | FILTER - SCREEN | | |
| 6 | 71568 | FUNNEL & GASKET ASSEMBLY | | |
| 7 | 60706-1 | CYCLONIC CASSETTE ASSY | | |
| 8 | 28131-288N | GRIP - DIRT CUP | | |
| 9 | 53197-1 | SCREW PACKAGE | | |
| 12 | 59297-2SV | GASKET - AIR DUCT | | |
| 14 | 28114-119N | FRAME - FILTER | | |
| 15 | 60695 | FILTER PACKAGE | | |
| | 59595-1 | GASKET - CYCLONE | | |



| Ref# | Part | Description | Comments | Qty |
|------|-------------|---------------------------|----------|-----|
| 1 | 27462E-288N | OPERATOR - HEIGHT ADJUSTM | | |
| 2 | 53197-1 | SCREW PACKAGE | | |
| 3 | 54933-64 | HOOD ASSEMBLY - PACKAGED | | |
| 4 | 60843-10 | BASE ASSEMBLY - CARTONED | | |
| 5 | 58506-1 | GASKET | | |
| 6 | 54943 | SPRING PACKAGE | | |
| 7 | 14993C-119N | CARRIAGE - WHEEL | | |
| 8 | 39173-119N | WHEEL - FRONT | | |
| 9 | 71551 | AXLE - WHEEL | | |
| 10 | 60251-3 | 12" DISTURBULATOR ASSY - | | |
| 11 | 15237A-288N | GUARD - FURNITURE (12") | | |
| 12 | 27468D-119N | CUFF - HOSE | | |
| 13 | 38479-4 | HOSE - COMPRESSION (PURCH | | |
| 14 | 27467A-288N | RELEASE - HANDLE | | |
| 15 | 60133 | COMPRESSION SPRING - PACK | | |
| 16 | 38260B-288N | WHEEL/BUSHING PACKAGE | | |
| 17 | 54432 | PACKAGE - RETAINING RING | | |
| 18 | 38590A | AXLE - REAR | | |
| 19 | 61120 | BELT PKG ASSY-STYLE U EXT | | |
| 20 | 60613 | PUSH ON NUT PKG | | |
| 21 | 54376-2 | BELT CAP & GASKET - PACKA | | |
| 22 | 57569 | GASKET - FELT | | |
| 23 | 38420-2 | CLAMP | | |



| Ref# | Part | Description | Comments | Qty |
|------|-------------|---------------------------|----------|-----|
| 1 | 37057A-3 | COUPLING - HOSE | | |
| 2 | 61028-1 | HOSE ASSEMBLY - CARTONED | | |
| 3 | 58728B | NESTING WAND ASSEMBLY | | |
| 4 | 58607 | SCREW PACKAGE | | |
| 5 | 70239B | OWNERS GUIDE | | |
| 6 | 27461B-119N | ADAPTER - HOSE | | |
| 7 | 26708-119N | TOOL - CREVICE | | |
| 8 | 61037 | COMBINATION TOOL - PACKAG | | |