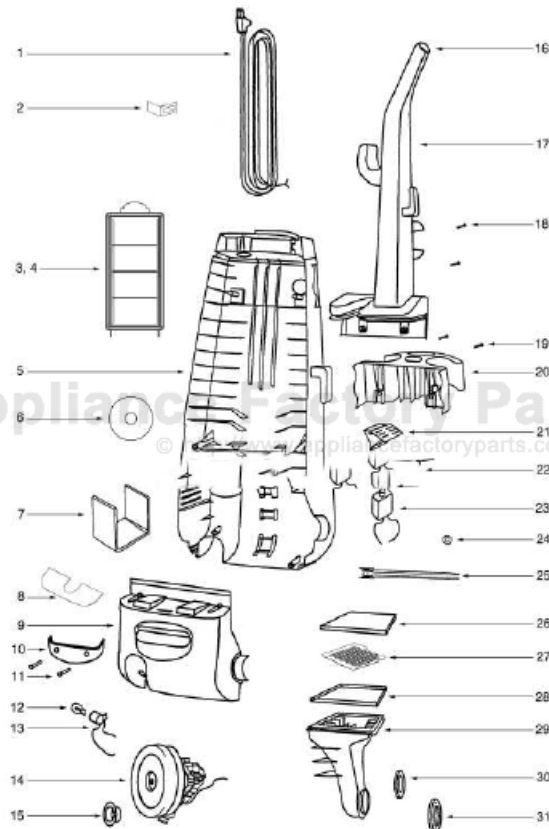


This Owner's Manual is provided and hosted by [Appliance Factory Parts](http://Appliance Factory Parts).



# Eureka 4393A Owner's Manual

[Shop genuine replacement parts for Eureka 4393A](#)

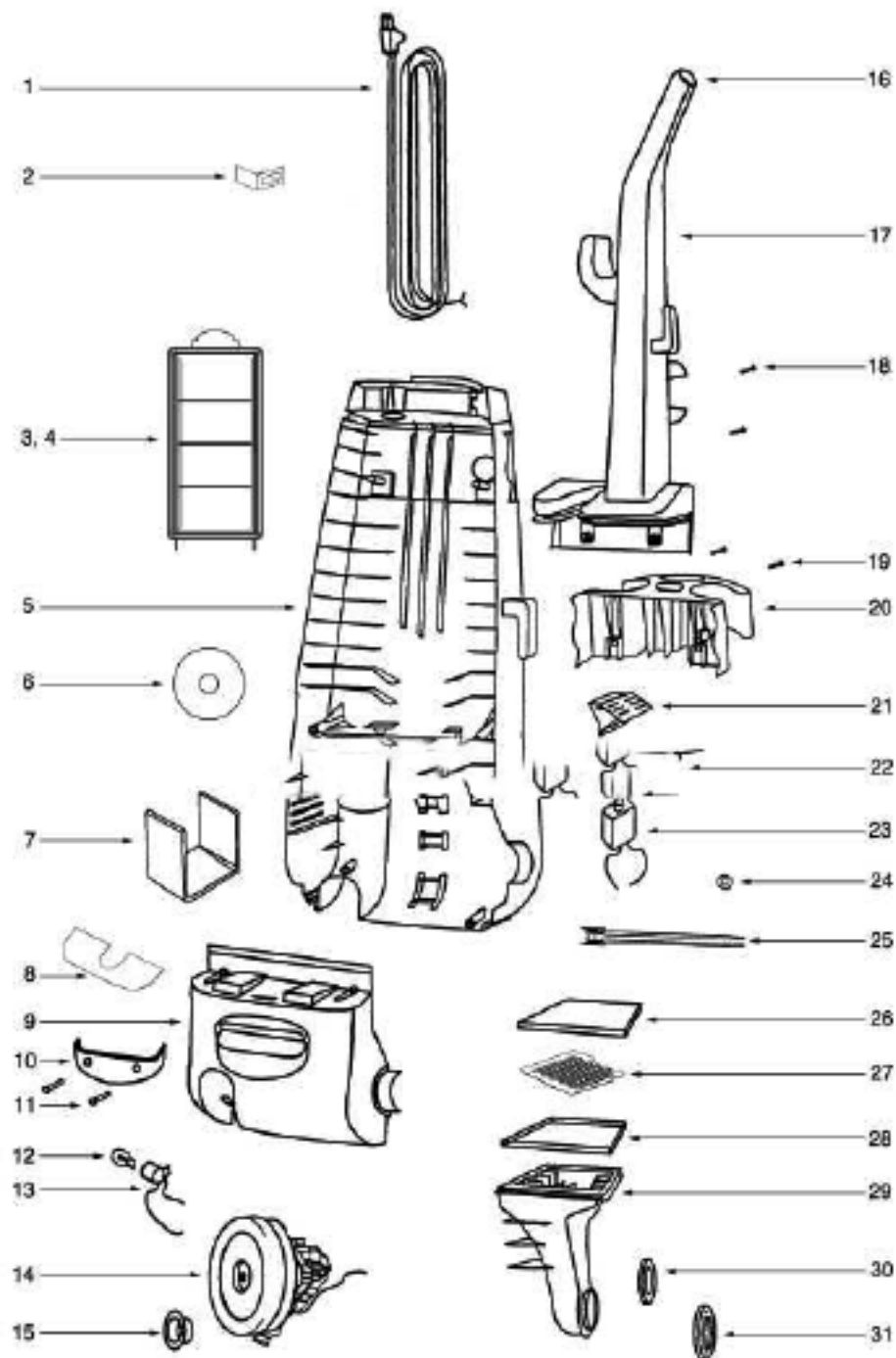


[Find Your Eureka Vacuum Cleaner Parts - Select From 855 Models](#)

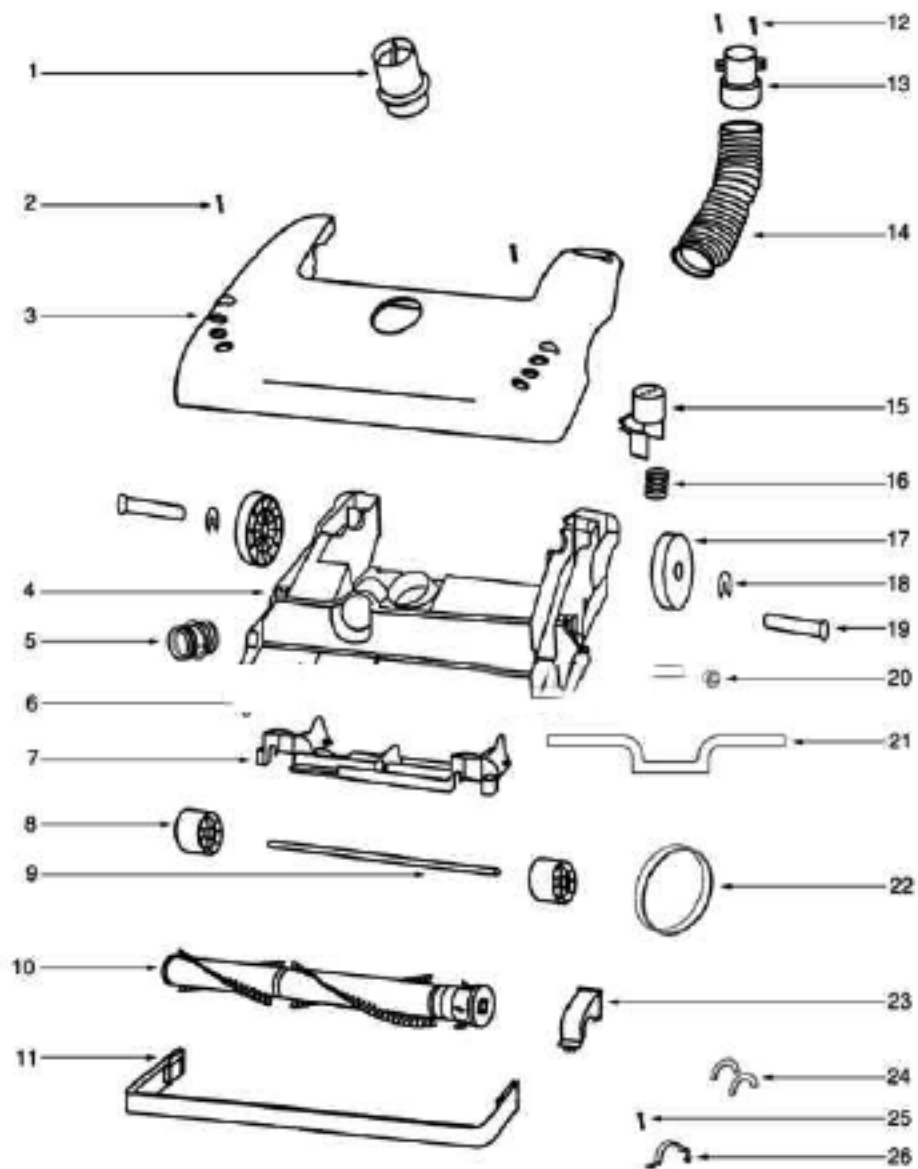
----- Manual continues below part list -----

## Available Replacement Parts for Eureka 4393A

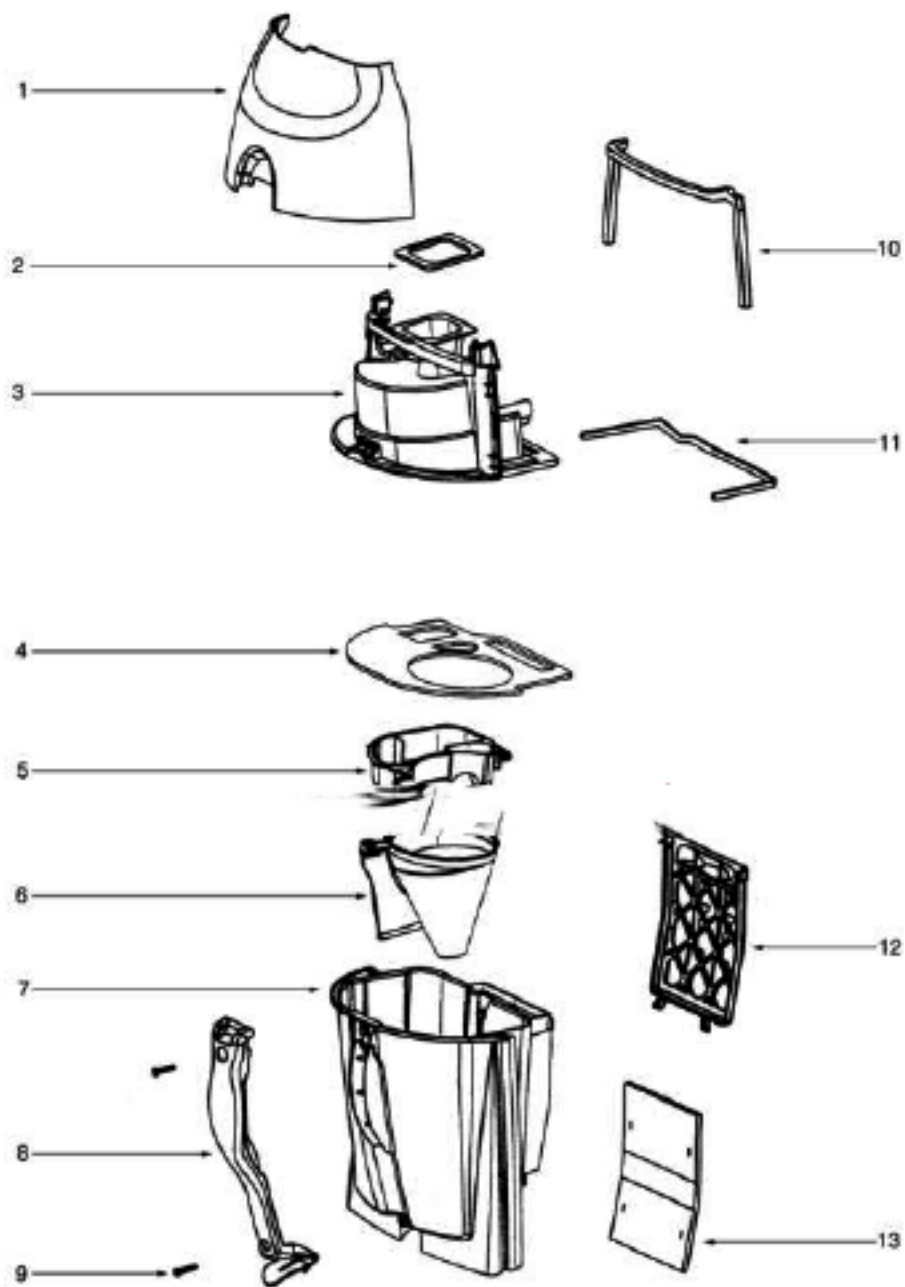
<a href="#">e-39266</a>	BELT OEM EUREKA EXTENED LIFE 1 PACK
<a href="#">ER-1875</a>	EUREKA HF9 HEPA FILTER



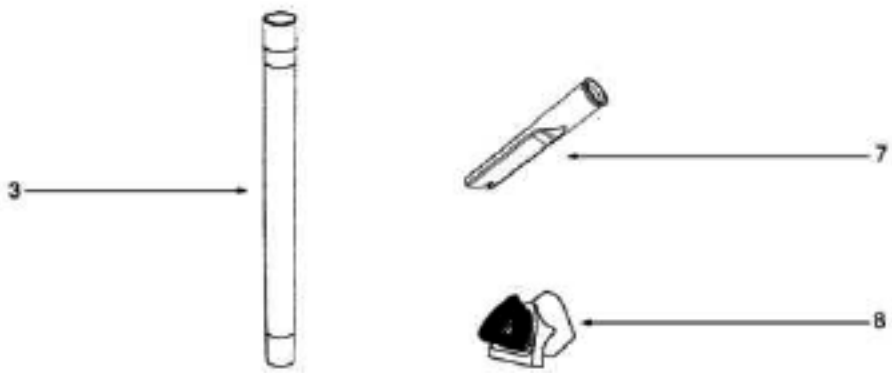
Ref#	Part	Description	Comments	Qty
1	39585-1	SUPPLY CORD & TERMINAL AS		
2	71645	SHIELD - SWITCH		
3	28457-8	FILTER FRAME & GRAPHICS A		
4	61500	HEPA FILTER PKG - STYLE H		
5	71608A-119N	HOUSING - REAR		
6	38688A	MOTOR SHIELD		
7	72224-1	FOAM - SOUND		
8	38696	SHIELD - LIGHT		
9	28506-33			
10	15072-313N	LENS - MOTOR COVER		
11	60068-2	SCREW PACKAGE	Pkg of 10.	
12	48815	LAMP - HEADLIGHT		
13	38611-2	HEADLAMP SCKT & TERMINAL		
14	62075-2	MOTOR ASSEMBLY - CTND		
15	27552B	GROMMET		
16	38482A-119N	CAP - HANDLE		
17	71139-1	HANDLE & CAP ASSEMBLY		
18	53238-44	SCREW PACKAGE	Pkg of 10.	
19	53197-1	SCREW PACKAGE	Pkg of 10.	
20	15443B-119N	TOOL CADDY		
21	27474C-288N	SWITCH - BUTTON		
22	60134	TORS SPRING PKG	Pkg of 5.	
23	28304A	SWITCH - PUSHBUTTON		
24	60165-1	RETAINING RING PKG	Pkg of 10.	
25	39252-2	THERMOSTAT & TERMINAL ASS		
26	61333	MOTOR FILTER PACKAGE	Pkg of 2.	
27	28425	GRILLE - AIR DUCT		
28	59297SV	GASKET - AIR DUCT		
29	15536A-119N	AIR DUCT		
30	27171A	GASKET		
31	39023	FLANGE - MOTOR INTAKE		



Ref#	Part	Description	Comments	Qty
1	27462E-288N	OPERATOR - HEIGHT ADJUSTM		
2	53238-44	SCREW PACKAGE		
3	02465-45			
4	60843-11	BASE ASSEMBLY - CARTONED		
5	28243A-316N	ADAPTER - BASE		
6	54943	SPRING PACKAGE		
7	14993C-119N	CARRIAGE - WHEEL		
8	39173A-119N	WHEEL - FRONT		
9	71551	AXLE - WHEEL		
10	60844-2	12" DISTURBULATOR ASSY -		
11	15237A-288N	GUARD - FURNITURE (12")		
13	27468D-119N	CUFF - HOSE		
14	38479-4	HOSE - COMPRESSION (PURCH		
15	27467A-288N	RELEASE - HANDLE		
16	60133	COMPRESSION SPRING - PACK		
17	72117-119N	WHEEL - REAR		
18	54432-1	PACKAGE - RETAINING RING		
19	38590A	AXLE - REAR		
20	72113-1	BUSHING - AXLE		
21	58506-1	GASKET		
22	61120A	BELT PKG ASSY-STYLE U EXT		
23	54376-2	BELT CAP & GASKET - PACKA		
24	57569	GASKET - FELT		
25	53197-1	SCREW PACKAGE		
26	38420-2	CLAMP		



Ref#	Part	Description	Comments	Qty
1	15502-48			
3	60705-5	UPPER CYCLONE ASSY - PKGD		
4	39219B-1	CYCLONE GASKET SHEET		
5	28099B-119N	FILTER - SCREEN		
6	71568-1	FUNNEL & GASKET ASSEMBLY		
7	60706-3	CYCLONIC CASSETTE ASSY		
8	28131-288N	GRIP - DIRT CUP		
9	53197-1	SCREW PACKAGE		
10	59595-1	GASKET - CYCLONE		
11	59297-2SV	GASKET - AIR DUCT		
12	28114-119N	FRAME - FILTER		
13	61940	FILTER PACKAGE		
2	39219B-1	CYCLONE GASKET SHEET		



Ref#	Part	Description	Comments	Qty
1	61028-1	HOSE ASSEMBLY - CARTONED	Includes items 2 and 6.	
2	37057A-3	COUPLING - HOSE		
3			Not on this model.	
4	59930B	PACKAGE - HARDWARE		
5	70239c-1			
6	27461B-119N	ADAPTER - HOSE		
7			Not on this model.	
8	61037	COMBINATION TOOL - PACKAG		