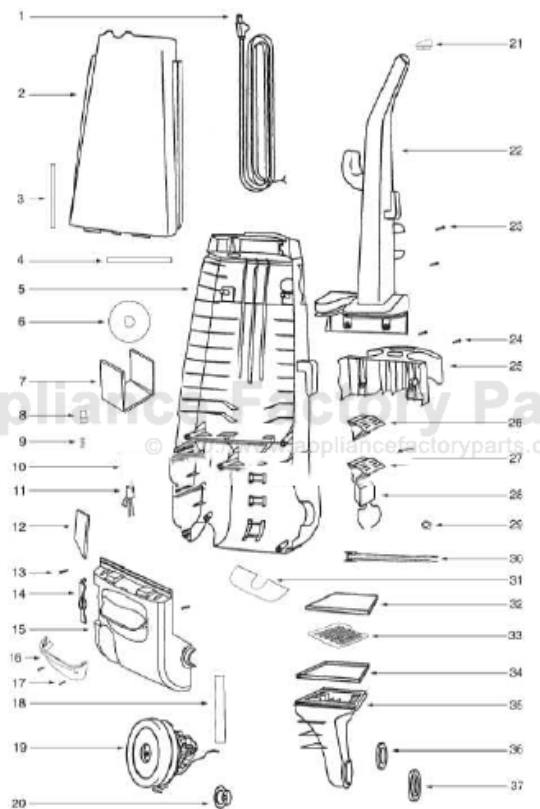


This Owner's Manual is provided and hosted by [Appliance Factory Parts](http://Appliance Factory Parts).



# Eureka 4458A Owner's Manual

[Shop genuine replacement parts for Eureka 4458A](#)

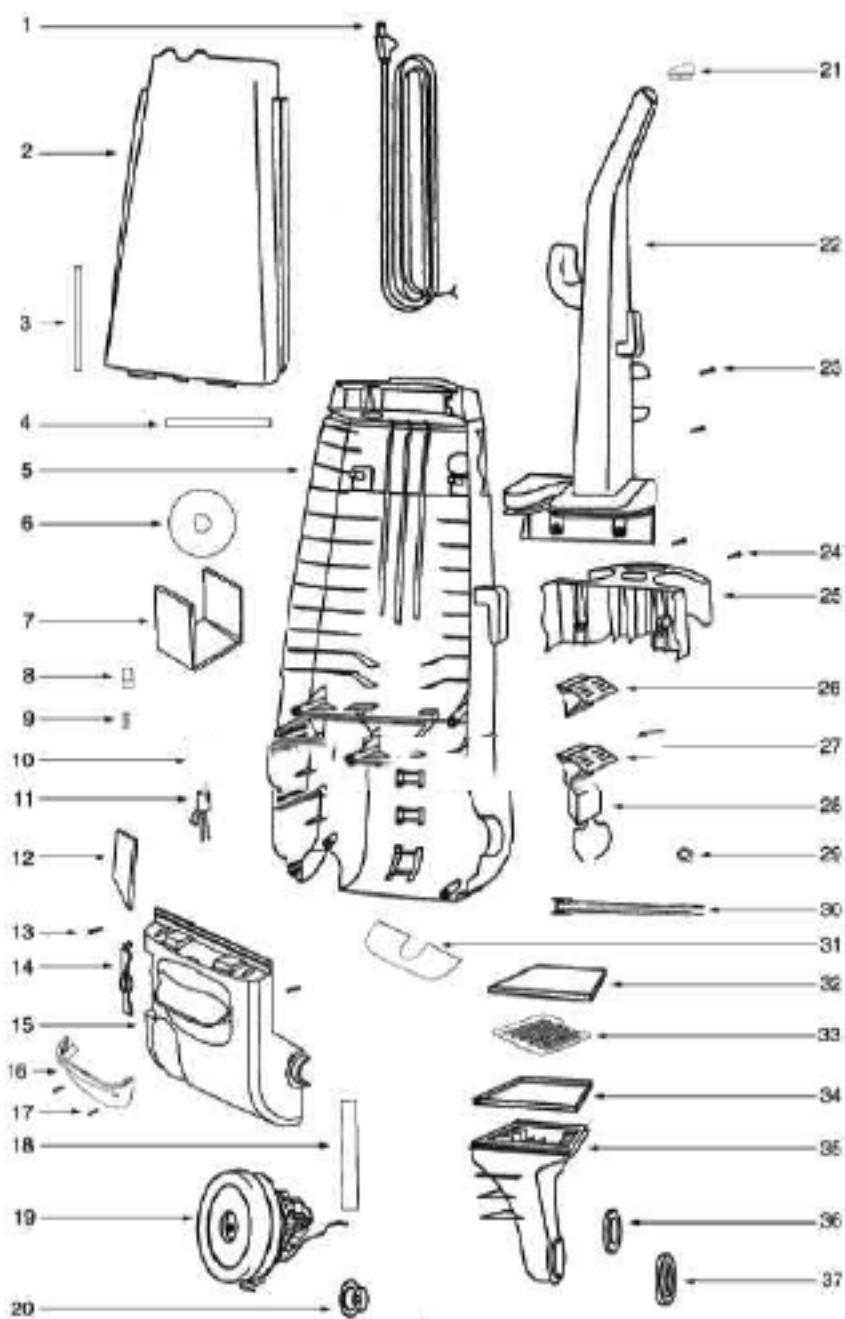


[Find Your Eureka Vacuum Cleaner Parts - Select From 855 Models](#)

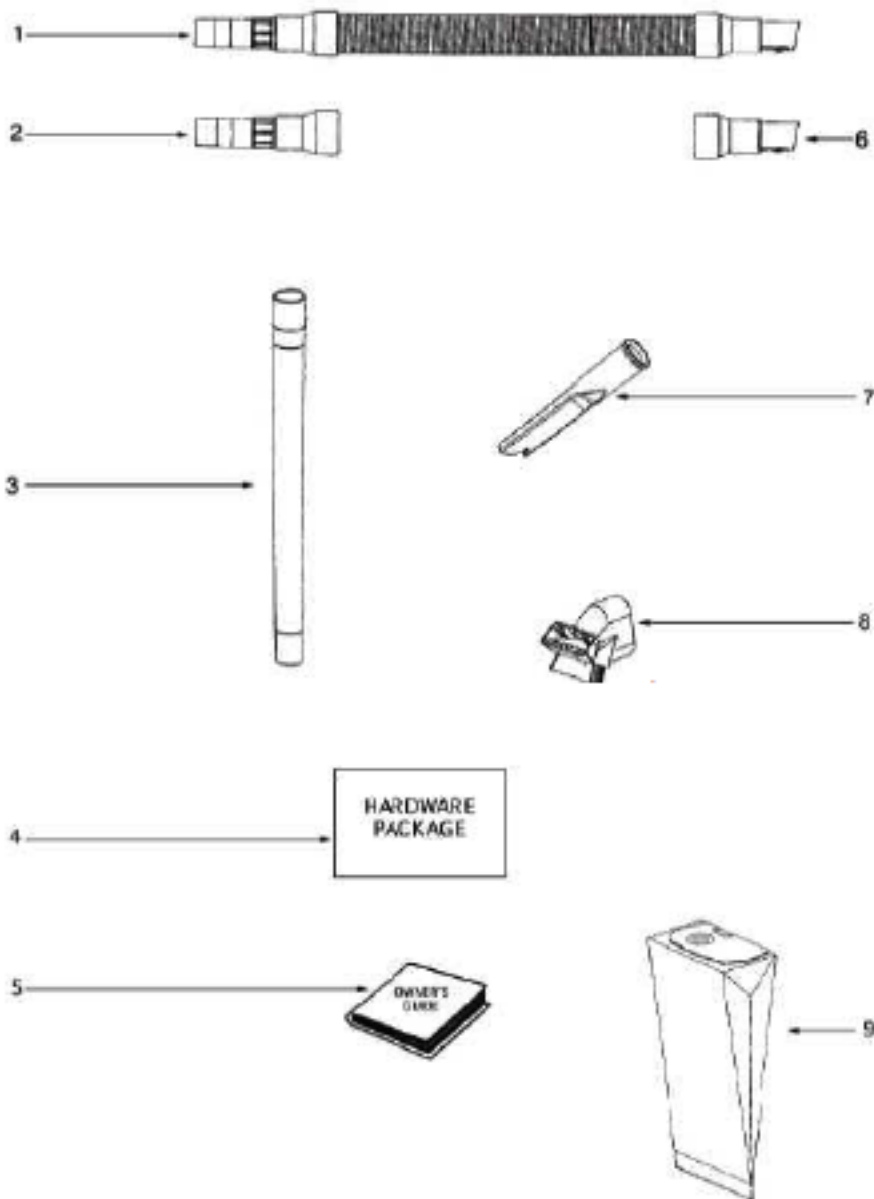
----- Manual continues below part list -----

## Available Replacement Parts for Eureka 4458A

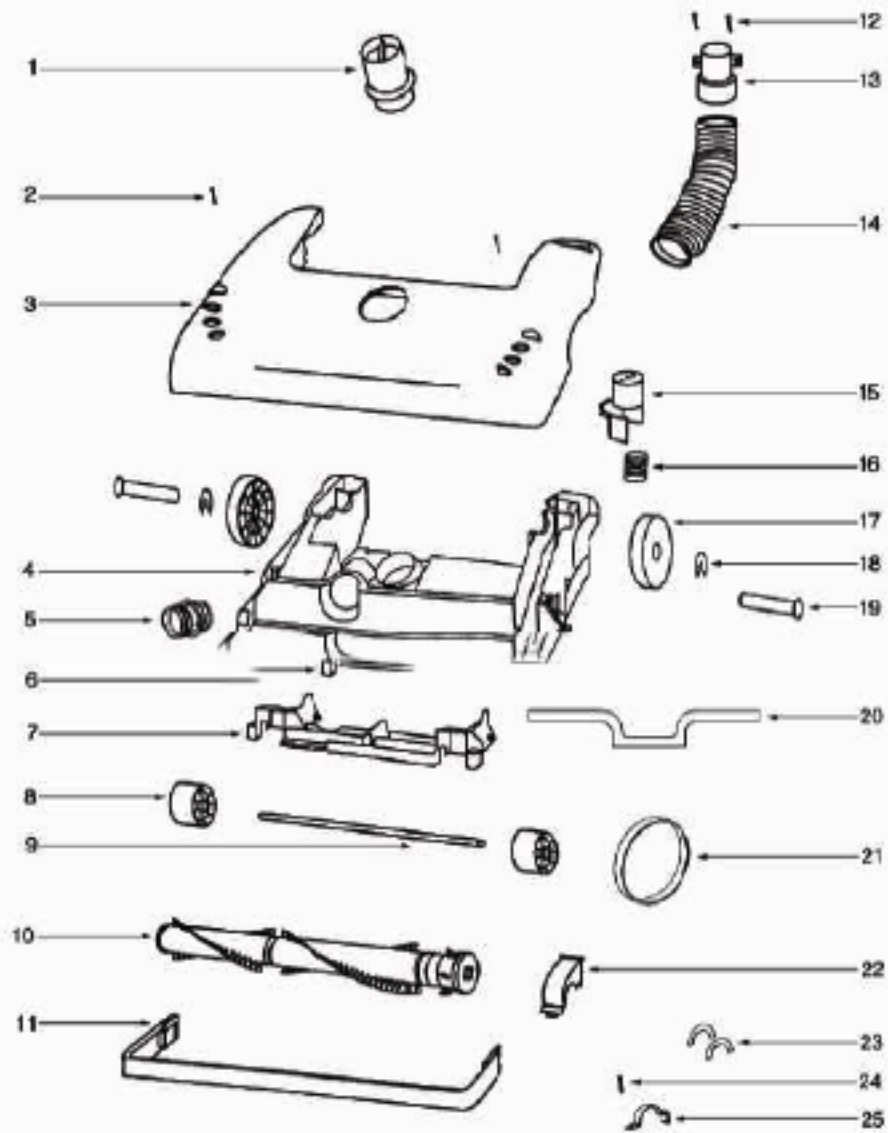
<a href="#">e-39266</a>	BELT OEM EUREKA EXTENED LIFE 1 PACK
<a href="#">ER-2028</a>	ROLLER



Ref#	Part	Description	Comments	Qty
1	39585-1	SUPPLY CORD & TERMINAL AS		
2	54936-96	BAG COVER ASSY - PACKAGED	Includes items 3 & 4	
3	58505	GASKET - BAG COVER		
4	38613	GASKET		
5	60126-22	REAR HOUSING - PACKAGED		
6	38688A	MOTOR SHIELD		
7	72224-1	FOAM - SOUND		
8	38678-119N	PLUNGER		
9	55794	SPRING		
10	48815	LAMP - HEADLIGHT		
11	38611-1	HEADLAMP SCKT & TERMINAL		
12	38614	EXHAUST - FILTER		
13	53197-1	SCREW PACKAGE	pkg of 10	
14			Not on this model.	
15	61432-9	MOTOR COVER ASSY W/O LENS	Includes item 14	
16	15072-313N	LENS - MOTOR COVER		
17	60068-2	SCREW PACKAGE	pkg of 10	
18	27962A	GASKET		
19	60261-15	MOTOR ASSEMBLY - PACKAGED		
20	27552B	GROMMET		
21	38482A-119N	CAP - HANDLE		
22	71139-1	HANDLE & CAP ASSEMBLY	Includes item 21	
23	53238-44	SCREW PACKAGE	pkg of 10	
24	53197-1	SCREW PACKAGE	pkg of 10	
25	02093A-119N	CADDY - TOOL		
26	27474C-288N	SWITCH - BUTTON		
27	60134	TORS SPRING PKG	pkg of 5	
28	28304A	SWITCH - PUSHBUTTON		
29	60165-1	RETAINING RING PKG	pkg of 10	
30	39252-2	THERMOSTAT & TERMINAL ASS		
31	38696	SHIELD - LIGHT		
32	61333	MOTOR FILTER PACKAGE	pkg of 2	
33	28425	GRILLE - AIR DUCT		
34	59297SV	GASKET - AIR DUCT		
35	15536A-119N	AIR DUCT		
36	27171A	GASKET		
37	39023	FLANGE - MOTOR INTAKE		



Ref#	Part	Description	Comments	Qty
1	61028-1	HOSE ASSEMBLY - CARTONED	Includes items 2 & 6	
2	37057B-3	COUPLING - HOSE		
3	13104-4	WAND - STRAIGHT		
4	59930B	PACKAGE - HARDWARE		
5	70262C			
6	27461B-119N	ADAPTER - HOSE		
7	27237-3	TOOL - CREVICE		
8	61037	COMBINATION TOOL - PACKAG		
9	58623A	PAPER BAG PKG FA (STYLE A	pkg of 3	



Ref#	Part	Description	Comments	Qty
1	27462E-288N	OPERATOR - HEIGHT ADJUSTM		
2	53238-44	SCREW PACKAGE	pkg of 10	
3	60069-79	HOOD ASSEMBLY - PACKAGED		
4	60701-11	BASE ASSY - PKGD	Includes Items 1,5,6,7,8,9,17,18,19 & 23	
5	28243A-316N	ADAPTER - BASE		
6	54943	SPRING PACKAGE	pkg of 10	
7	14993C-119N	CARRIAGE - WHEEL		
8	39173A-119N	WHEEL - FRONT		
9	71551	AXLE - WHEEL		
10	62228-2	BRUSHROLL ASSEMBLY - CART		
11	15591A-288N	GUARD - FURNITURE		
12	53197-1	SCREW PACKAGE	pkg of 10	
13	27468D-119N	CUFF - HOSE		
14	38479-4	HOSE - COMPRESSION (PURCH		
15	27467A-288N	RELEASE - HANDLE		
16	60133	COMPRESSION SPRING - PACK	pkg of 5	
17	27493A-119N	WHEEL - REAR		
18	54432-1	PACKAGE - RETAINING RING		
19	38590A	AXLE - REAR		
20	58506-4	GASKET		
21	61120A	BELT PKG ASSY-STYLE U EXT	pkg of 2	
22	54376-2	BELT CAP & GASKET - PACKA		
23	57569	GASKET - FELT		
24	53197-1	SCREW PACKAGE	pkg of 10	
25	38420-2	CLAMP		