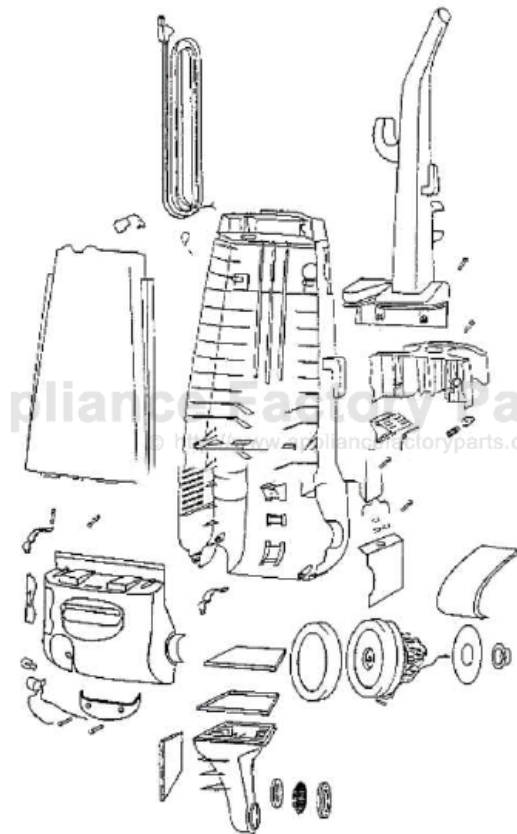


This Owner's Manual is provided and hosted by [Appliance Factory Parts](#).



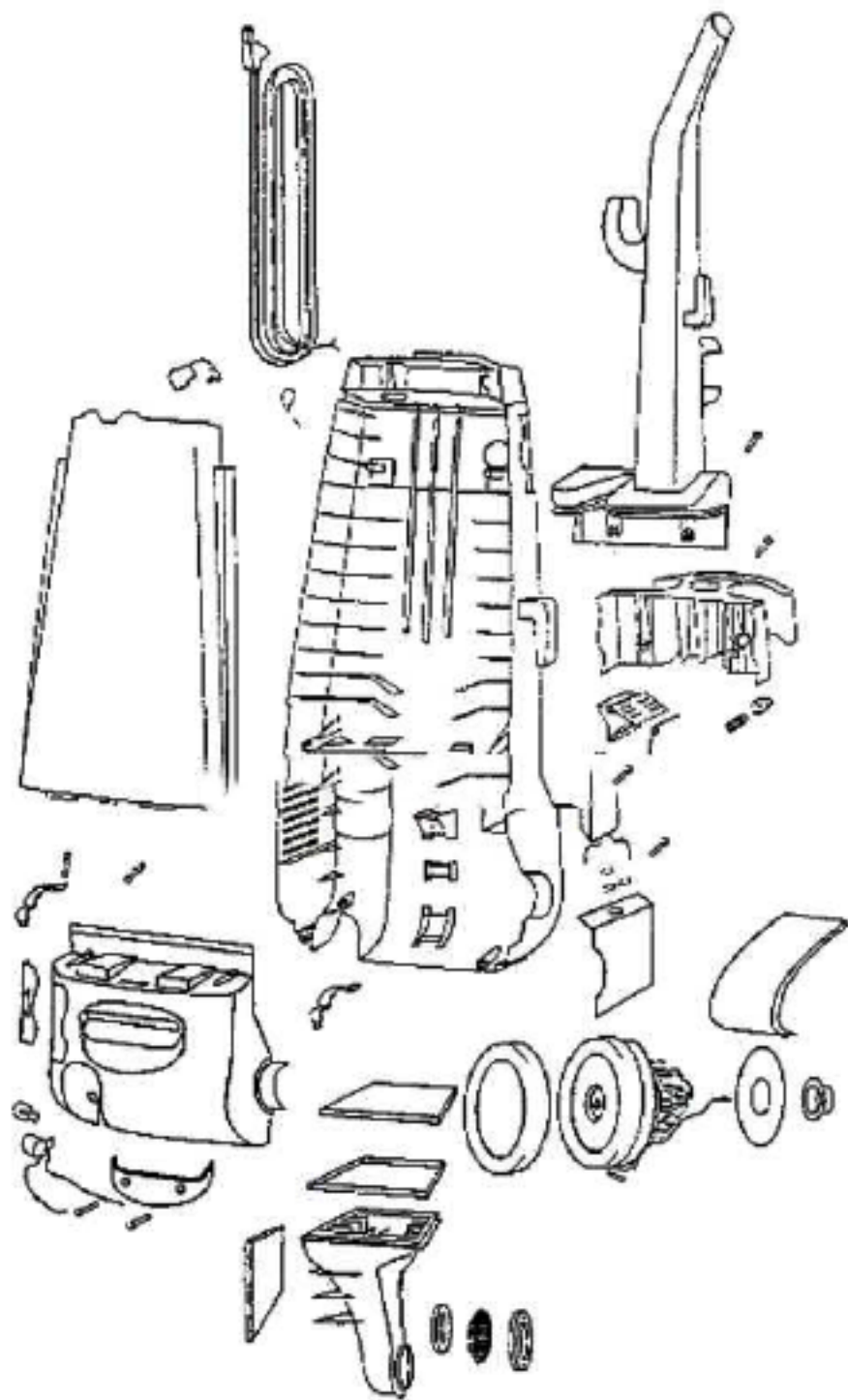
Eureka 4460AT Owner's Manual

[Shop genuine replacement parts for Eureka 4460AT](#)



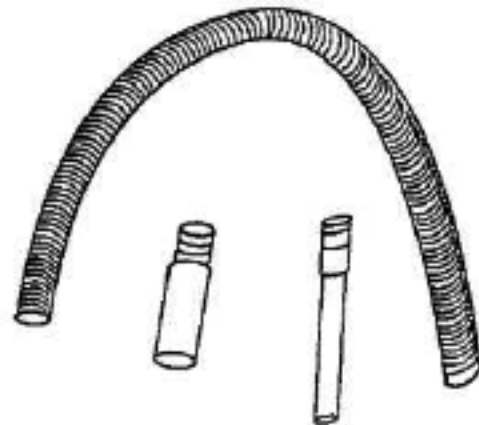
[Find Your Eureka Vacuum Cleaner Parts - Select From 855 Models](#)

----- Manual continues below -----



Ref#	Part	Description	Comments	Qty
1	02093-288N	CADDY - TOOL		
2	15277-1	HANDLE & CAP ASSEMBLY		
3	15377-1	SWITCH ASSEMBLY		
4	27474A-288N	SWITCH - BUTTON		
5	27492	MOTOR GASKET		
6	27549-288N	DOOR - FILTER		
7	38420-2	CLAMP		
8	38469	FILTER - PRE-MOTOR		
9	38482-119N	CAP - HANDLE		
10	38613	GASKET		
11	38638	MOTOR INTAKE FLANGE		
12	38661	FOAM - SOUND		
13	38663	GASKET - MOTOR INTAKE		
14	38678-119N	PLUNGER		
15	38680-3	SUPPLY CORD & TERMINAL AS		
16	38688	MOTOR SHIELD		
17	38689	SHIELD - REAR HOUSING		
18	38755	FILTER-EXHAUST (HI EFFICI		
19	46713-1	TIE - CABLE		
20	53190-1	BUSHING - STRAIN RELIEF-P		
21	53197-1	SCREW PACKAGE		
22	53214-2	WIRE SPLICE 5		
23	54936-2	BAG COVER ASSY - PACKAGED		
24	54940	MOTOR ASSY - CARTONED		
25	55794	SPRING		
26	58505	GASKET - BAG COVER		
27	60126-1	REAR HOUSING - PACKAGED		
28	60134	TORS SPRING PKG		
29	60165	RETAINING RING PKG		

Ref#	Part	Description	Comments	Qty
1	14993-119N	CARRIAGE - WHEEL		
2	15234-288N	GUARD - FURNITURE (14")		
3	27462-288N	OPERATOR - HEIGHT ADJUSTM		
4	27467-288N	RELEASE - HANDLE		
5	27468A-119N	CUFF - HOSE		
6	27493-288N	WHEEL - REAR		
7	38063	GUARD - BELT		
8	38236A-119N	WHEEL - FRONT		
9	38479-1	HOSE - COMPRESSION (PURCH		
10	38590	AXLE - REAR		
11	53197-1	SCREW PACKAGE		
12	54312	BELT PACKAGE ASSEMBLY (U)		
13	54376-1	BELT CAP & GASKET - PACKA		
14	54432	PACKAGE - RETAINING RING		
15	54647	14" DISTURBULATOR ASSY -		
16	54669-2	SCREW PACKAGE		
17	54942	PUSH-ON NUT - PACKAGED		
18	54943	SPRING PACKAGE		
	57569	GASKET - FELT		
20	58206-1	AXLE - WHEEL		
21	58371	COMPRESSION SPRING - PACK		
22	58417	PACKAGE OF BRUSH ROLL RIB		
	58506-2	GASKET		
24	60069-2	HOOD ASSEMBLY - PACKAGED		
25	60071-1	BASE ASSY - PKGD		



HARDWARE
PKG.



Ref#	Part	Description	Comments	Qty
1	27461B-119N	ADAPTER - HOSE		
2	54780	TOOL - CREVICE		
3	54784	COMBINATION TOOL - PACKAG		
4	54945A-1	HOSE ASSEMBLY - CARTONED		
5	58236	PAPER BAG PKG ASSY (STYLE		
6	58607	SCREW PACKAGE		
7	58726A	NESTING WAND ASSEMBLY		