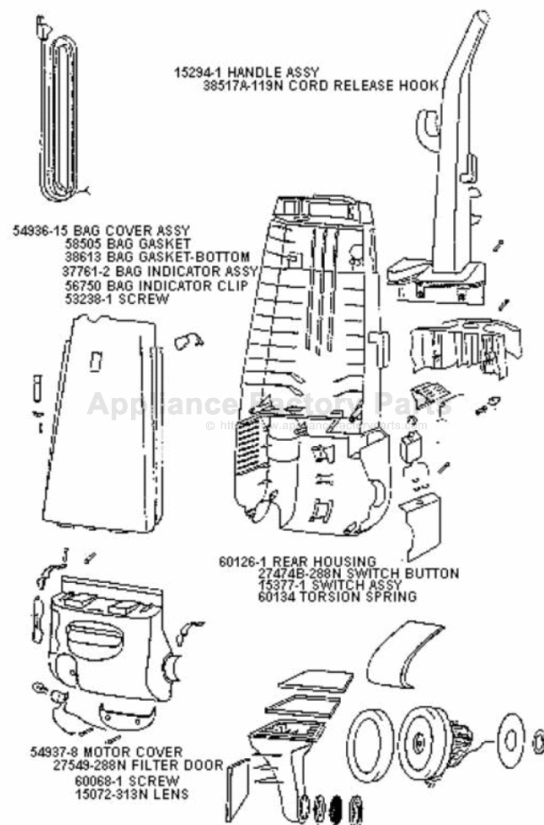


This Owner's Manual is provided and hosted by [Appliance Factory Parts](#).



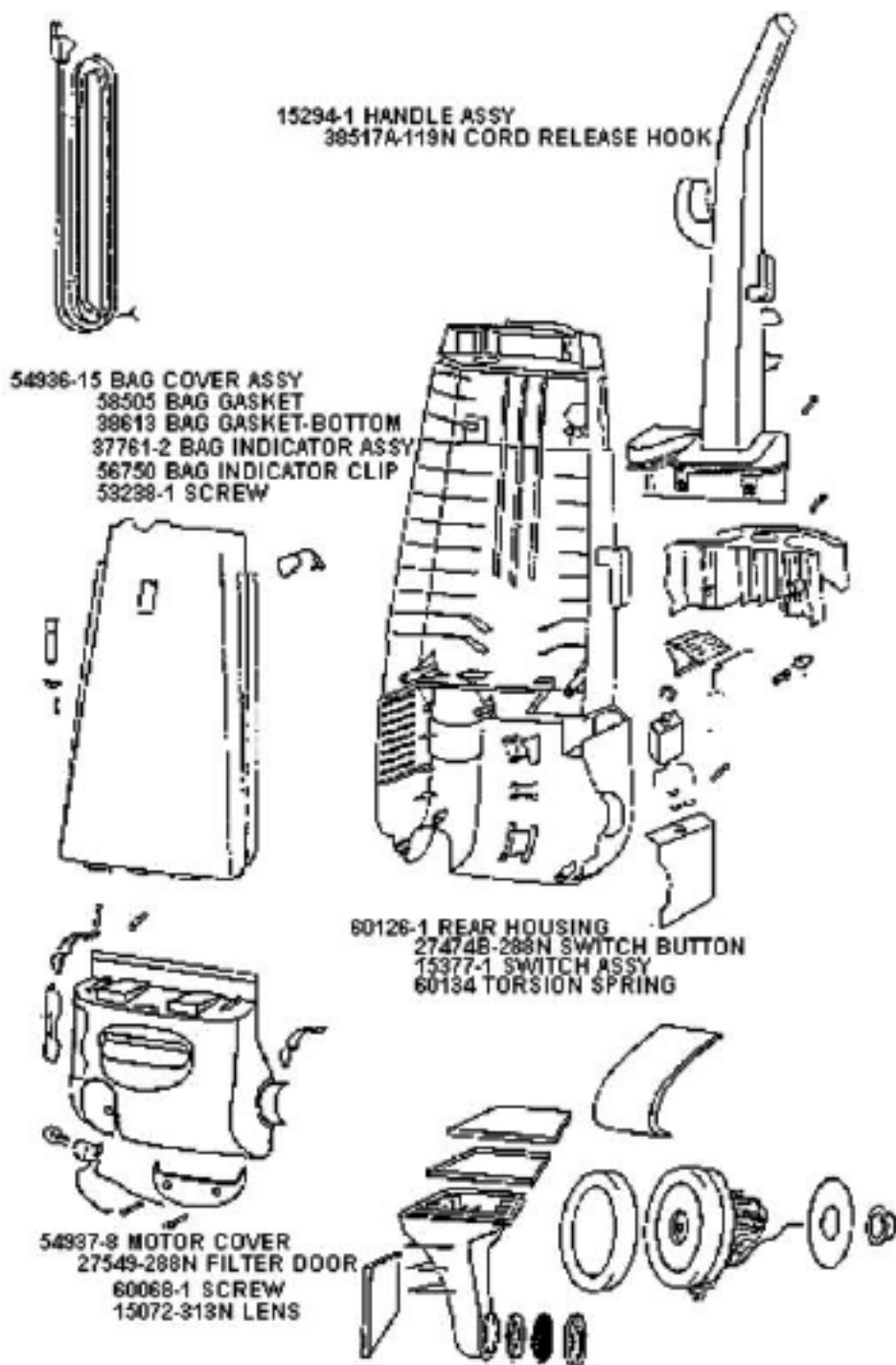
Eureka 4462AT Owner's Manual

[Shop genuine replacement parts for Eureka 4462AT](#)



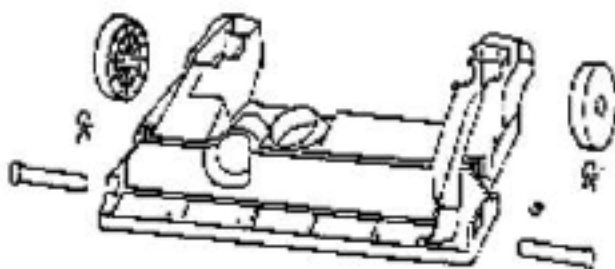
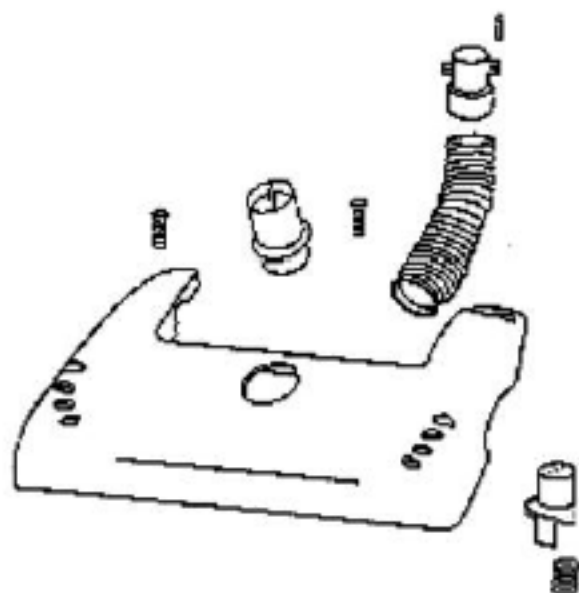
[Find Your Eureka Vacuum Cleaner Parts - Select From 855 Models](#)

----- Manual continues below -----



PARTS2 - 4462AT

Ref #	Part	Description	Comments	Qty
1	02093-288N	CADDY - TOOL		
2	15072-313N	LENS - MOTOR COVER		
3	15294-1	HANDLE & GRAPHICS ASSEMBL		
4	15377-1	SWITCH ASSEMBLY		
5	27474B-288N	SWITCH - BUTTON		
6	27492	MOTOR GASKET		
7	27549-288N	DOOR - FILTER		
8	37761-2	BAG INDICATOR ASSEMBLY		
9	38420-2	CLAMP		
10	38469	FILTER - SECONDARY(USE 39334)		
11	38517A-119N	HOOK - CORD RELEASE		
12	38611	HEADLAMP SCKT & TERMINAL		
13	38613	GASKET		
14	38638	MOTOR INTAKE FLANGE		
15	38661	FOAM - SOUND		
16	38663	MOTOR INTAKE GASKET		
17	38678-119N	PLUNGER		
18	38680-5	SUPPLY CORD & TERMINAL AS		
19	38688	MOTOR SHIELD		
20	38689-1	SHIELD-REAR HOUSING		
21	38755	FILTER-EXHAUST (HI EFFICI)		
22	48815	LAMP - HEADLIGHT		
23	53190-1	BUSHING - STRAIN RELIEF-P		
24	53197-1	SCREW PACKAGE		
25	53238-1	SCREW PACKAGE		
26	54936-15	BAG COVER ASSY - PACKAGED		
27	54937-8	Discontinued, use 54937-1		
28	54940	MOTOR ASSY - CARTONED		
29	55794	SPRING		
30	56750	CLIP - BAG INDICATOR		
31	58505	GASKET - BAG COVER		
32	58725	AIR DUCT & GASKET ASSY		
33	60068-1	SCREW PACKAGE		
34	60126-1	REAR HOUSING - PACKAGED		
35	60134	TORS SPRING PKG		
36	60165	RETAINING RING PKG		
37	60192-1	WIRE SPLICE 5		



60071-2 BASE ASSY

27462A-288N HEIGHT ADJ. KNOB

38590 REAR AXLE

60079 BRUSHROLL RIB

54943 SPRING

14993A-119N WHEEL CARRIAGE

58206-1 WHEEL AXLE

15234-288N FURNITURE GUARD

27493-288N REAR WHEEL

54432 RETAINING RING

54942 PUSH-ON NUT

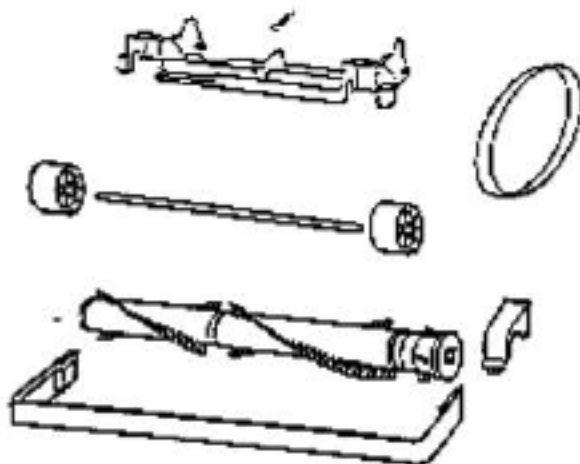
38236A-119N FRONT WHEEL

NOT ILLUSTRATED

38063 BELT GUARD

58506-2 GASKET

57569 FELT GASKET



PARTS1 - 4462AT

Ref #	Part	Description	Comments	Qty
1	14993A-119N	CARRIAGE - WHEEL		
2	15234-288N	GUARD - FURNITURE (14")		
3	27462A-288N	OPERATOR - HEIGHT ADJUSTM		
4	27467-288N	RELEASE - HANDLE		
5	27468A-119N	CUFF HOSE(SUB 27468B-119N)		
6	27493-288N	WHEEL - REAR		
7	38063	GUARD - BELT		
8	38236A-119N	WHEEL - FRONT		
9	38479-1	Discontinued, use 38479-2		
10	38590	AXLE - REAR		
11	53197-1	SCREW PACKAGE		
12	54312	BELTS BRAVO U PAK		
13	54375-2	BELT CAP & GASKET - PACKA		
14	54432	PACKAGE - RETAINING RING		
15	54669-2	SCREW PACKAGE		
16	54942	PUSH-ON NUT - PACKAGED		
17	54943	SPRING PACKAGE		
18	58206-1	AXLE - WHEEL		
19	58506-2	GASKET		
20	60069-10	HOOD ASSY - PKG		
21	60071-2	BASE ASSY - PKGD		
22	60079	BR ROLL RIB PKG (NLA)		
23	60132-1	BRUSHROLL ASSEMBLY - CART		
24	60133	COMPRESSION SPRING - PACK		

60169 HOSE ASSY

27461B-119N HOSE ADAPTER

27624-119N STRAIGHT WAND



HARDWARE
PKG.



ACCESSORIES - 4462AT

Ref #	Part	Description	Comments	Qty
1	27461B-119N	ADAPTER - HOSE		
2	54669-2	SCREW PACKAGE		
3	54780	TOOL - CREVICE		
4	54784	COMBINATION TOOL - PACKAG		
5	58236	PAPER BAG PKG ASSY (STYLE		
6	58728A	NESTED WAND use 58728B		
7	60169	HOSE ASSEMBLY - CARTONED		