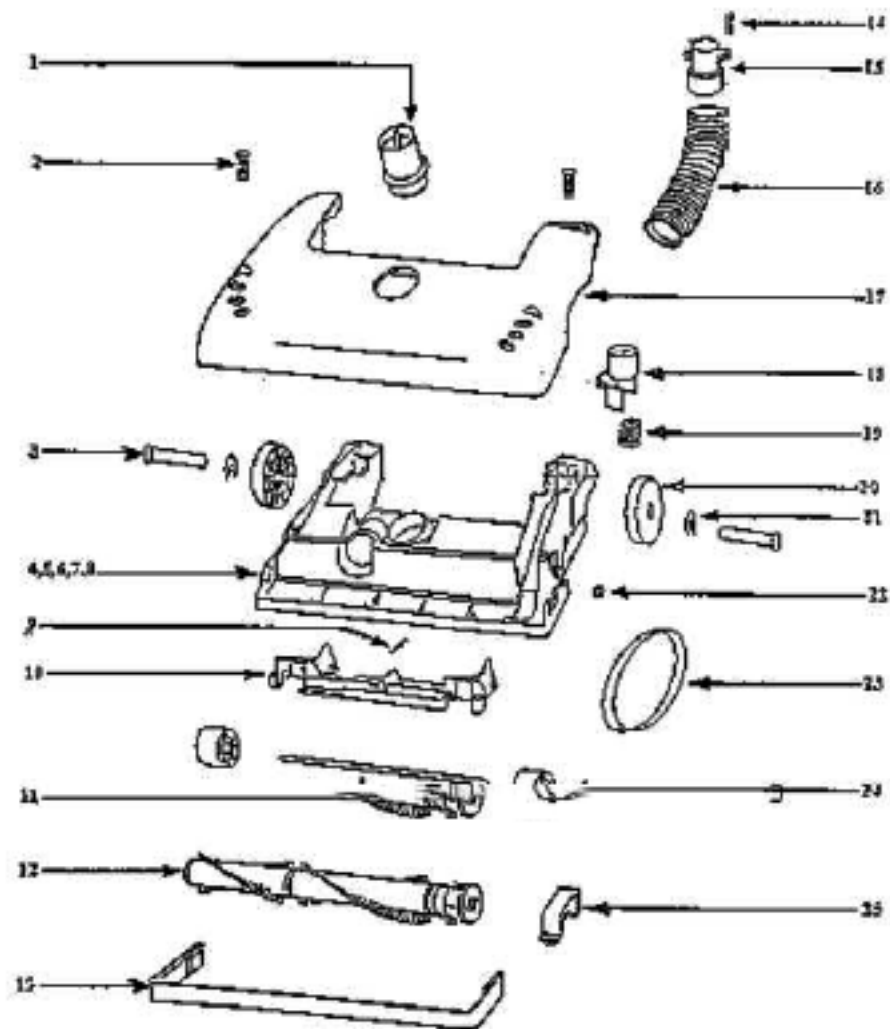


- | | |
|-------------------------------|------------------------------|
| 4. 54938-8 BAG COVER ASSY | 7. 60129-1 REAR HOUSING ASSY |
| 59505 BAG GASKET | 27474A-288N SWITCH BUTTON |
| 39813 BAG GASKET-BOTTOM | 15377-1 SWITCH ASSY |
| 37761-2 BAG INDICATOR ASSY | 60134 TORSION SPRING |
| 56750 BAG INDICATOR CLIP | 11. 54837-7 MOTOR COVER |
| 53238-1 SCREW | 27549-288N FILTER DOOR |
| 21. 15294-1 HANDLE ASSY | 60069-1 SCREW |
| 38517A-119N CORD RELEASE HOOK | 15072-313N LENS |

PARTS2 - 4485AT

Ref #	Part	Description	Comments	Qty
1	02093-288N	CADDY - TOOL		
2	15072-313N	LENS - MOTOR COVER		
3	15294-1	HANDLE & GRAPHICS ASSEMBL		
4	15377-1	SWITCH ASSEMBLY		
5	27474A-288N	SWITCH - BUTTON		
6	27492	MOTOR GASKET		
7	27549-288N	DOOR - FILTER		
8	37761-2	BAG INDICATOR ASSEMBLY		
9	38420-2	CLAMP		
10	38469	FILTER - PRE-MOTOR		
11	38517A-119N	HOOK - CORD RELEASE		
12	38611	HEADLAMP SCKT & TERMINAL		
13	38613	GASKET		
14	38638	MOTOR INTAKE FLANGE		
15	38661	FOAM - SOUND		
16	38663	GASKET - MOTOR INTAKE		
17	38678-119N	PLUNGER		
18	38680-4	SUPPLY CORD & TERMINAL AS		
19	38688	MOTOR SHIELD		
20	38689-1	SHIELD - REAR HOUSING		
21	38755	FILTER-EXHAUST (HI EFFICI		
22	46713-1	TIE - CABLE (PURCHASED)		
23	48815	LAMP - HEADLIGHT		
24	53190-1	BUSHING - STRAIN RELIEF-P		
25	53197-1	SCREW PACKAGE		
26	53214-2	WIRE SPLICE 5		
27	53238-1	SCREW PACKAGE		
28	54936-8	BAG COVER ASSY - PACKAGED		
29	54940	MOTOR ASSY - CARTONED		
30	55794	SPRING		
31	56750	CLIP - BAG INDICATOR		
32	58505	GASKET - BAG COVER		
33	60068-1	SCREW PACKAGE		
34	60126-1	REAR HOUSING - PACKAGEG		
35	60134	TORS SPRING PKG		
36	60165	RETAINING RING PKG		
38	15218-119N	AIR DUCT		
39	38701	AIR SCREEN		
40	38662	AIR DUCT GASKET		
41	27552A	GROMMET		



80071-1 BASE ASSY

27402A-288N HEIGHT ADJ KNOB

38590 REAR AXLE

38063 BELT GUARD

80079 BRUSHROLL RIB

54943 SPRING

14993A-119N WHEEL CARRIAGE

58206-1 WHEEL AXLE

15234-288N FURNITURE GUARD

27493-288N REAR WHEEL

54432 RETAINING RING

54942 PUSH-ON NUT

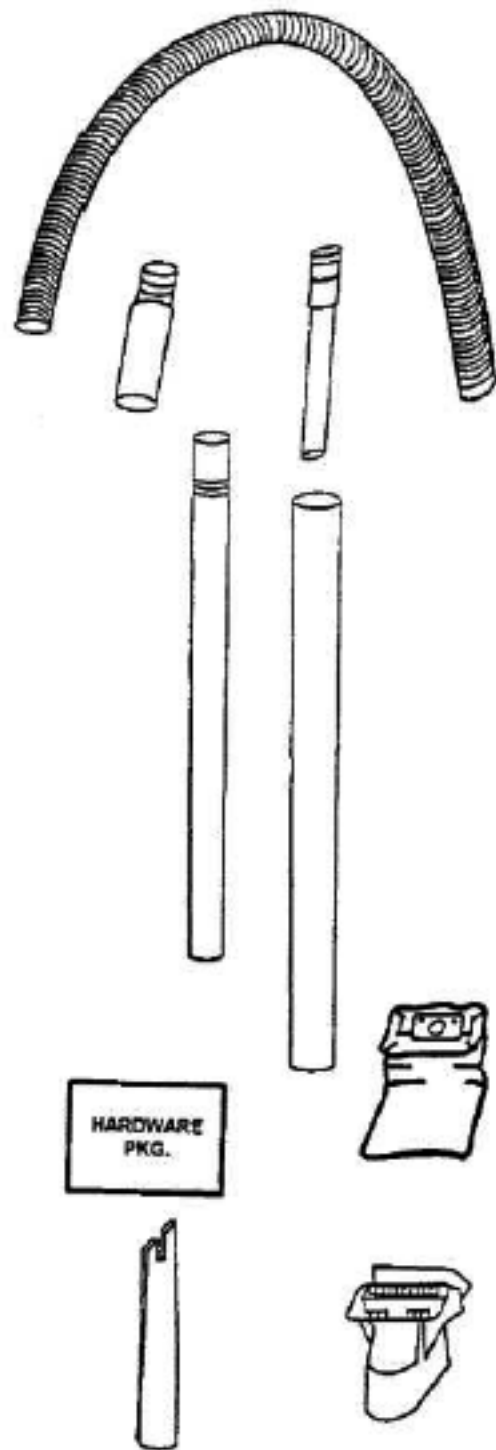
38238A-119N FRONT WHEEL

58506-2 GASKET

57509 FELT GASKET

PARTS1 - 4485AT

Ref #	Part	Description	Comments	Qty
1	14993A-119N	CARRIAGE - WHEEL		
2	15234-288N	GUARD - FURNITURE (14")		
3	27462-288N	OPERATOR - HEIGHT ADJUSTM		
4	27462A-288N	OPERATOR - HEIGHT ADJUSTM		
5	27467-288N	RELEASE - HANDLE		
6	27468A-119N	CUFF - HOSE		
7	27493-288N	WHEEL - REAR		
8	38063	GUARD - BELT		
9	38236A-119N	WHEEL - FRONT		
10	38479-1	HOSE - COMPRESSION (PURCH		
11	38590	AXLE - REAR		
12	53197-1	SCREW PACKAGE		
13	54432	PACKAGE - RETAINING RING		
14	54669-2	SCREW PACKAGE		
15	54942	PUSH-ON NUT - PACKAGED		
16	54943	SPRING PACKAGE		
17	57569	GASKET - FELT		
18	58206-1	AXLE - WHEEL		
19	58506-2	GASKET		
20	58889	COMPRESSION SPRING - PACK		
21	60069-7	HOOD ASSEMBLY - PACKAGED		
22	60071-1	BASE ASSY - PKGD		
23	60079	PACKAGE OF BRUSH ROLL RIB		
24	60132-1	BRUSHROLL ASSEMBLY - CART		



ACCESSORIES - 4465AT

Ref #	Part	Description	Comments	Qty
1	27461B-119N	ADAPTER - HOSE		
2	54638A	HOSE ASSEMBLY - CARTONED		
3	54669-2	SCREW PACKAGE		
4	54780	TOOL - CREVICE		
5	54784	COMBINATION TOOL - PACKAG		
6	58236	PAPER BAG PKG ASSY (STYLE		
7	58728A	NESTING WAND ASSEMBLY		