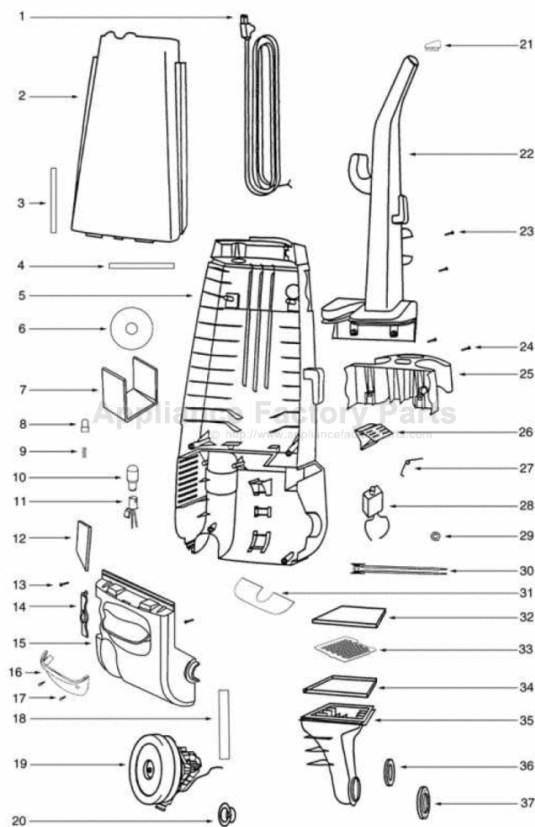


This Owner's Manual is provided and hosted by [Appliance Factory Parts](http://ApplianceFactoryParts.com).



Eureka 4468A Owner's Manual

[Shop genuine replacement parts for Eureka 4468A](#)



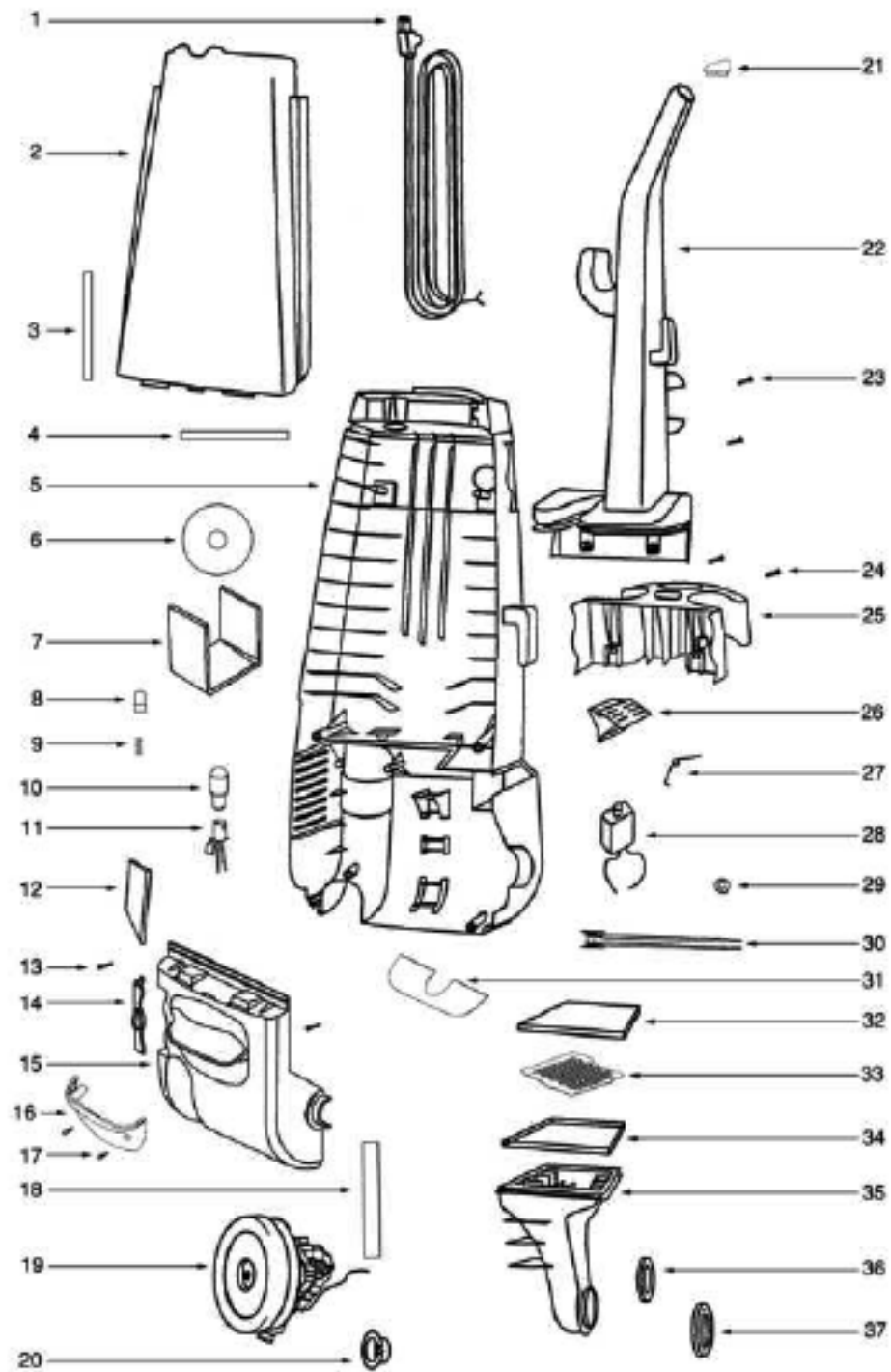
[Find Your Eureka Vacuum Cleaner Parts - Select From 855 Models](#)

----- Manual continues below part list -----

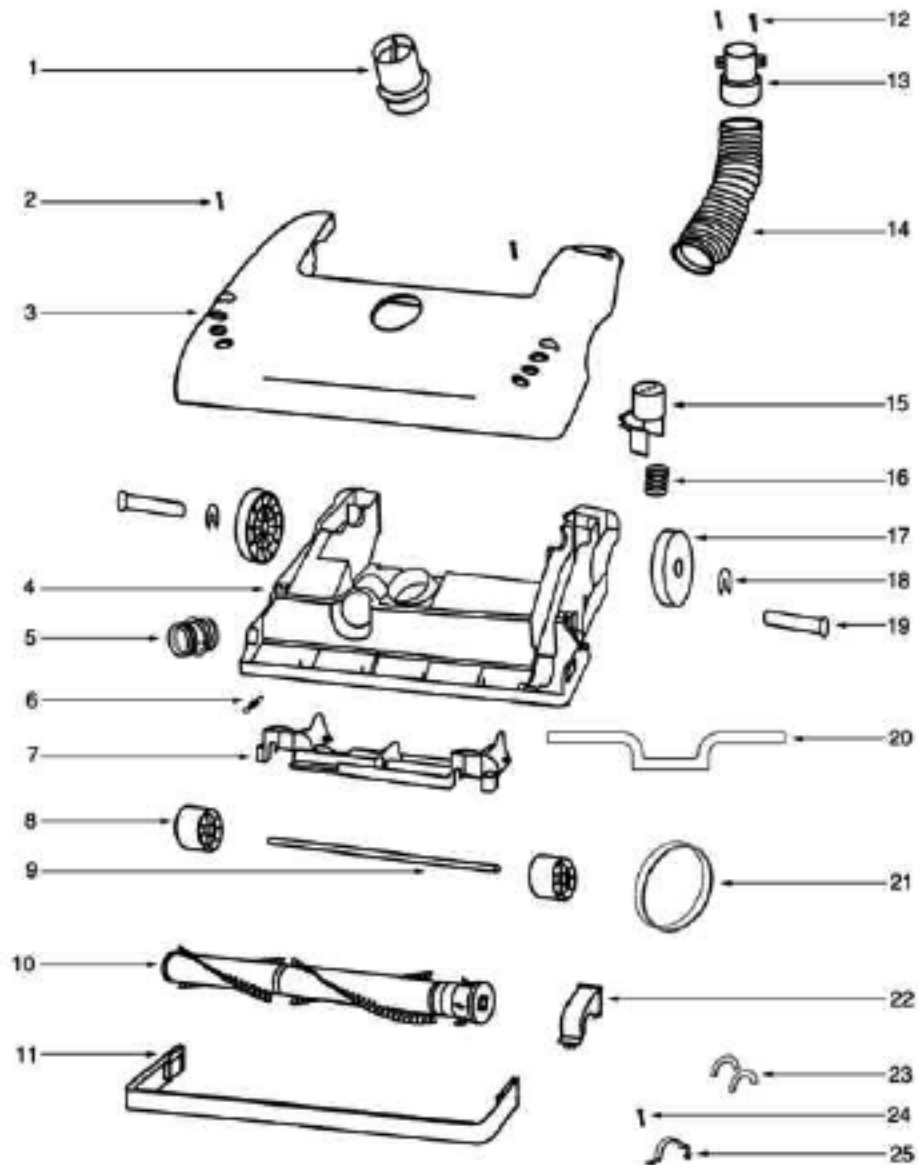
Available Replacement Parts for Eureka 4468A

[e-39266](#)

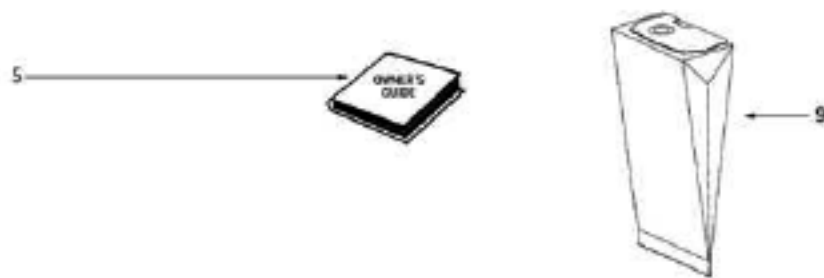
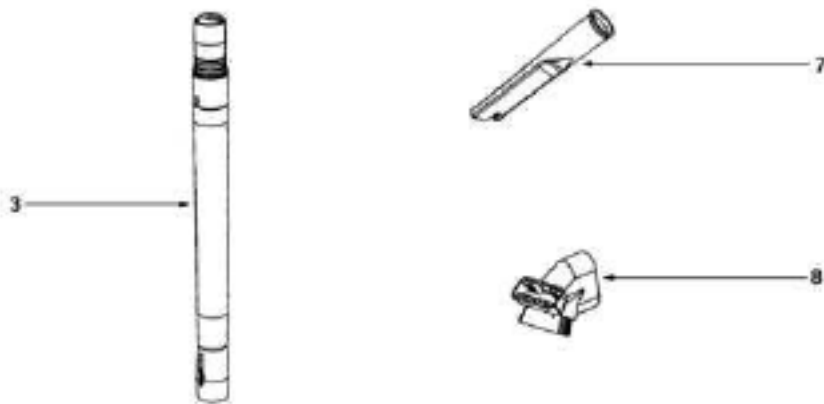
BELT OEM EUREKA EXTENED LIFE 1 PACK



| rt | Description | Comments | Qty |
|----|-------------|---------------------------|-----|
| 1 | 39585-1 | SUPPLY CORD & TERMINAL AS | |
| 2 | 54936-93 | BAG COVER ASSY - PACKAGED | |
| 3 | 58505 | GASKET - BAG COVER | |
| 4 | 38613 | GASKET | |
| 5 | 60126-22 | REAR HOUSING - PACKAGED | |
| 6 | 38688A | MOTOR SHIELD | |
| 7 | 72224-1 | FOAM - SOUND | |
| 8 | 38678-119N | PLUNGER | |
| 9 | 55794 | SPRING | |
| 10 | 48815 | LAMP - HEADLIGHT | |
| 11 | 38611-1 | HEADLAMP SCKT & TERMINAL | |
| 12 | 61505 | HEPA FILTER PKG - STYLE H | |
| 14 | 27549-288N | DOOR - FILTER | |
| 15 | 61432-22 | MOTOR COVER ASSY W/O LENS | |
| 16 | 15072-313N | LENS - MOTOR COVER | |
| 17 | 60068-2 | SCREW PACKAGE | |
| 18 | 27962A | GASKET | |
| 19 | 60261-11 | MOTOR ASSEMBLY - PACKAGED | |
| 20 | 27552B | GROMMET | |
| 21 | 38482A-119N | CAP - HANDLE | |
| 22 | 71139-1 | HANDLE & CAP ASSEMBLY | |
| 23 | 53238-44 | SCREW PACKAGE | |
| 24 | 53197-1 | SCREW PACKAGE | |
| 25 | 02093A-119N | CADDY - TOOL | |
| 26 | 27474C-288N | SWITCH - BUTTON | |
| 27 | 60134 | TORS SPRING PKG | |
| 28 | 28304A | SWITCH - PUSHBUTTON | |
| 29 | 60165-1 | RETAINING RING PKG | |
| 30 | 39252-2 | THERMOSTAT & TERMINAL ASS | |
| 31 | 38696 | SHIELD - LIGHT | |
| 32 | 61333 | MOTOR FILTER PACKAGE | |
| 33 | 28425 | GRILLE - AIR DUCT | |
| 34 | 59297SV | GASKET - AIR DUCT | |
| 35 | 15536A-119N | AIR DUCT | |
| 36 | 27171A | GASKET | |
| 37 | 39023 | FLANGE - MOTOR INTAKE | |



| | Part | Description | Comments | Qty |
|----|-------------|---------------------------|----------|-----|
| 1 | 27462E-288N | OPERATOR - HEIGHT ADJUSTM | | |
| 2 | 53238-44 | SCREW PACKAGE | | |
| 3 | 60069-75 | HOOD ASSEMBLY - PACKAGED | | |
| 4 | 60701-11 | BASE ASSY - PKGD | | |
| 5 | 28243A-316N | ADAPTER - BASE | | |
| 6 | 54943 | SPRING PACKAGE | | |
| 7 | 14993C-119N | CARRIAGE - WHEEL | | |
| 8 | 39173A-119N | WHEEL - FRONT | | |
| 9 | 71551 | AXLE - WHEEL | | |
| 10 | 61308-2 | BRUSHROLL ASSEMBLY - CART | | |
| 11 | 15591A-288N | GUARD - FURNITURE | | |
| 13 | 27468D-119N | CUFF - HOSE | | |
| 14 | 38479-4 | HOSE - COMPRESSION (PURCH | | |
| 15 | 27467A-288N | RELEASE - HANDLE | | |
| 16 | 60133 | COMPRESSION SPRING - PACK | | |
| 17 | 27493A-119N | WHEEL - REAR | | |
| 18 | 54432-1 | PACKAGE - RETAINING RING | | |
| 19 | 38590A | AXLE - REAR | | |
| 20 | 58506-4 | GASKET | | |
| 21 | 61120A | BELT PKG ASSY-(U-EXTENDED | | |
| 22 | 54376-2 | BELT CAP & GASKET - PACKA | | |
| 23 | 57569 | GASKET - FELT | | |
| 24 | 53197-1 | SCREW PACKAGE | | |
| 25 | 38420-2 | CLAMP | | |



| | rt | Description | Comments | Qty |
|---|-------------|---------------------------|----------|-----|
| 1 | 60169-10 | HOSE ASSEMBLY - CARTONED | | |
| 2 | 37057A-3 | COUPLING - HOSE | | |
| 3 | 58728B | NESTING WAND ASSEMBLY | | |
| 4 | 59930B | PACKAGE - HARDWARE | | |
| 5 | 70262B | OWNER'S GUIDE | | |
| 6 | 27461B-119N | ADAPTER - HOSE | | |
| 7 | 27237-3 | TOOL - CREVICE | | |
| 8 | 61037 | COMBINATION TOOL - PACKAG | | |
| 9 | 58623A | PAPER BAG PKG FA (STYLE A | | |
| | 59930A | PACKAGE - HARDWARE | | |
| | 61028-1 | HOSE ASSEMBLY - CARTONED | | |
| | 13104-4 | WAND - STRAIGHT | | |
| | 58236A | PAPER BAG PKG ASSY (STYLE | | |