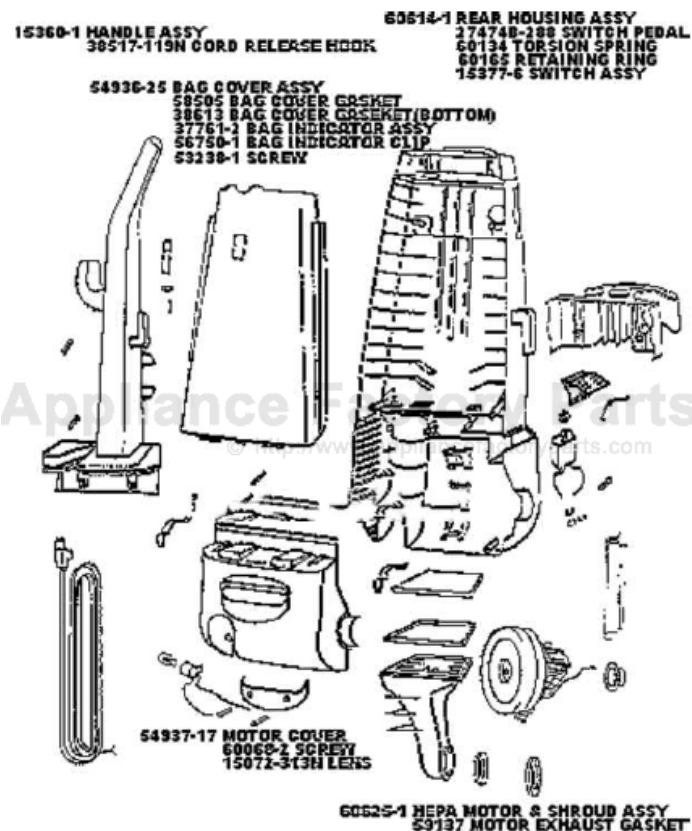


This Owner's Manual is provided and hosted by [Appliance Factory Parts](#).



Eureka 4475AT Owner's Manual

[Shop genuine replacement parts for Eureka 4475AT](#)



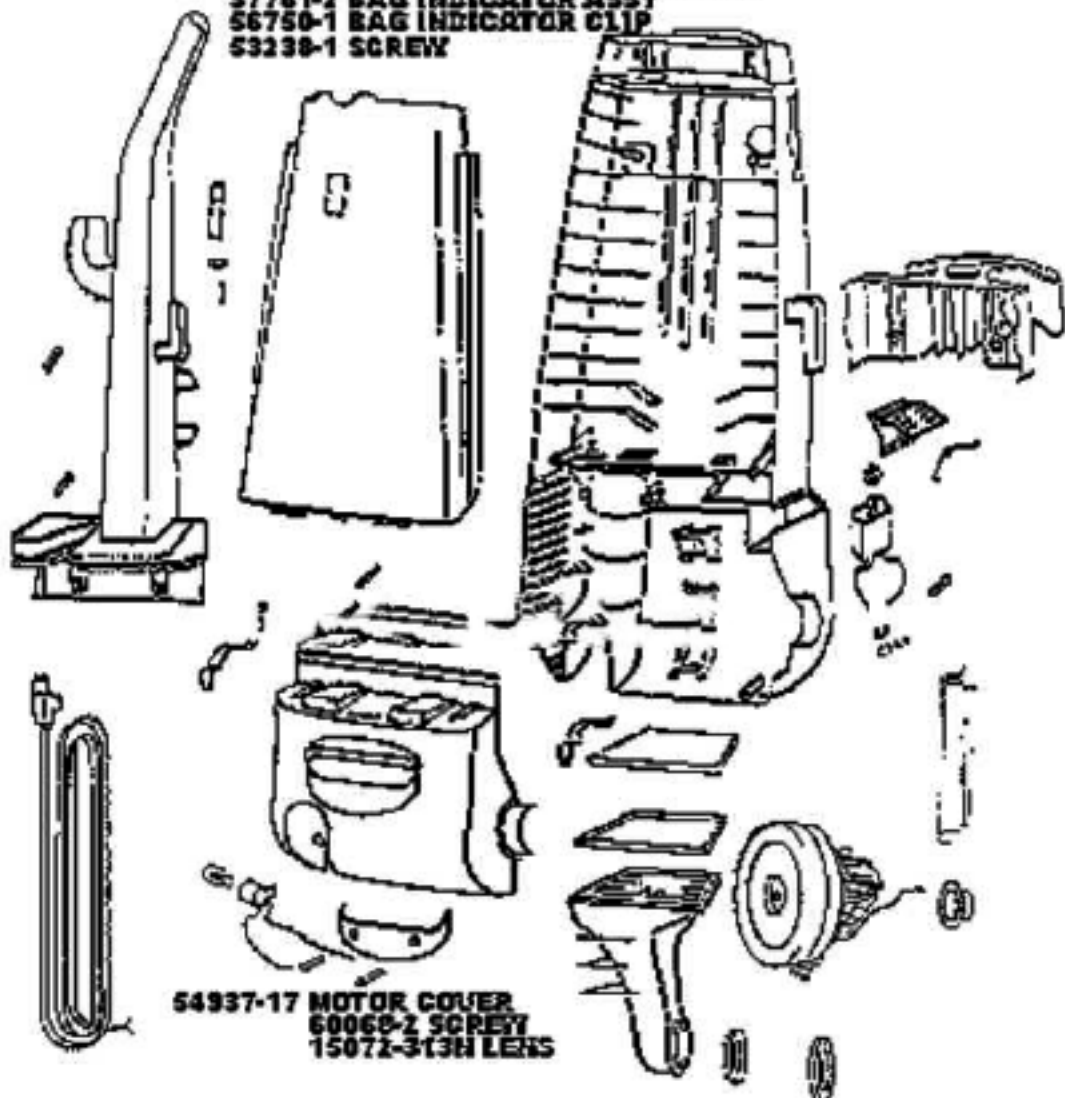
[Find Your Eureka Vacuum Cleaner Parts - Select From 855 Models](#)

----- Manual continues below -----

15360-1 HANDLE ASSY
38517-119N CORD RELEASE HOOK

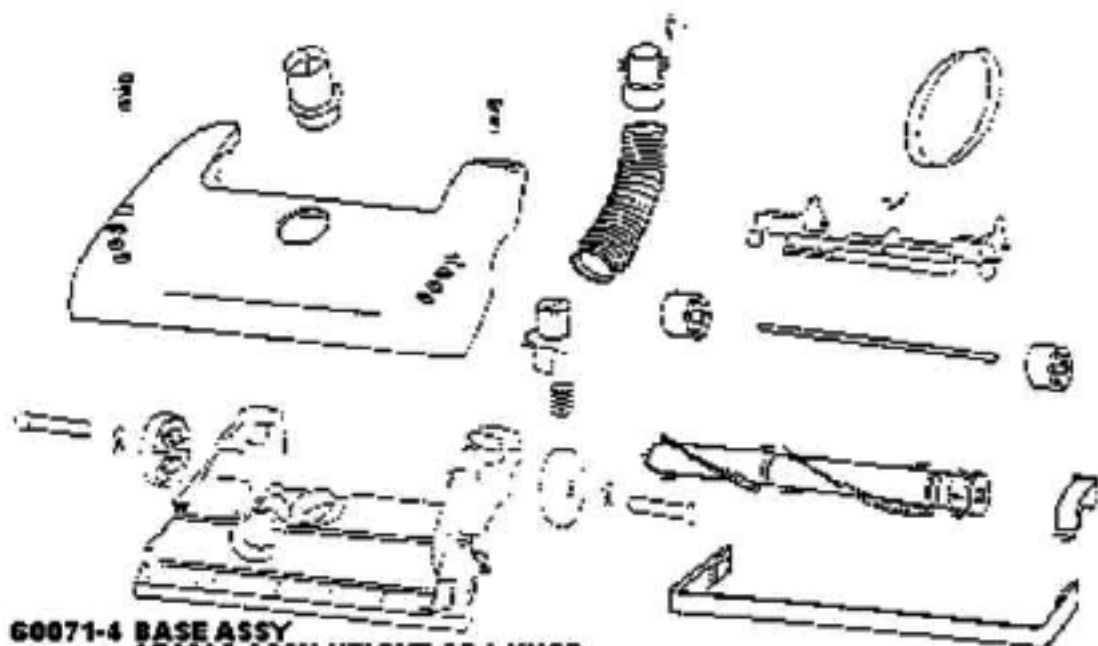
60614-1 REAR HOUSING ASSY
27474B-288 SWITCH PEDAL
60134 TORSION SPRING
60165 RETAINING RING
15377-6 SWITCH ASSY

54936-25 BAG COVER ASSY
58505 BAG COVER GASKET
38613 BAG COVER GASKET (BOTTOM)
37761-2 BAG INDICATOR ASSY
56750-1 BAG INDICATOR CLIP
53238-1 SCREW



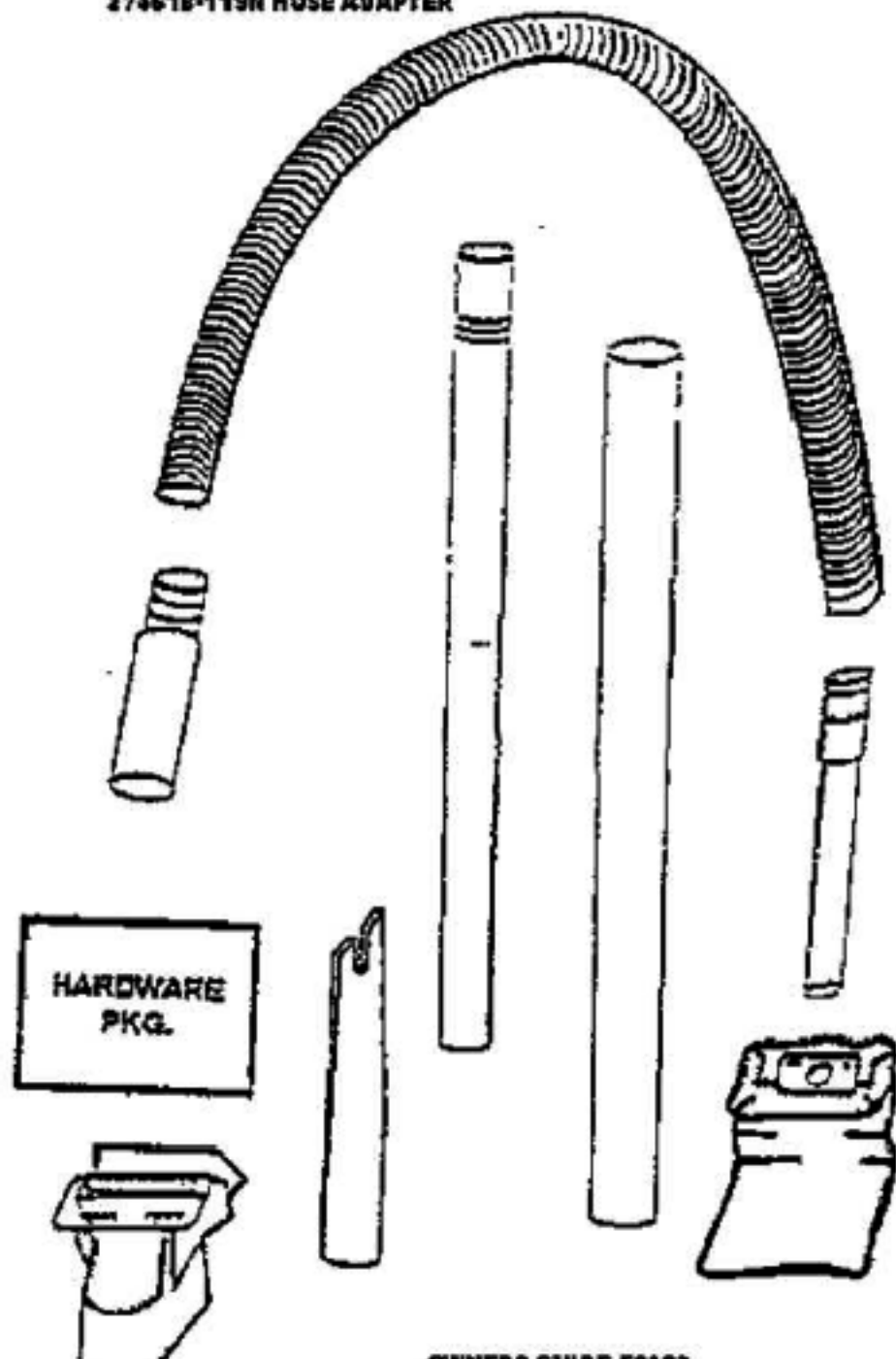
60625-1 HEPA MOTOR & SHROUD ASSY

Ref #	Part	Description	Comments	Qty
1	15072-313N	LENS - MOTOR COVER		
2	15360-1	HANDLE & GRAPHICS ASSEMBL		
3	15377-6	KIT - SERVICE W/INSTRUCTI		
4	15408-119N	DUCT - AIR		
5	15443-288N	TOOL CADDY		
6	27171	GASKET		
7	27474B-288N	SWITCH - BUTTON		
8	27552B	GROMMET		
9	37761-2	BAG INDICATOR ASSEMBLY		
10	38420-2	CLAMP		
11	38517-119N	HOOK - CORD RELEASE		
12	38611	HEADLAMP SCKT & TERMINAL		
13	38613	GASKET		
14	38680-9	SUPPLY CORD & TERMINAL AS		
15	39023	FLANGE - MOTOR INTAKE		
16	39046	FILTER - PRE-MOTOR		
17	48815	LAMP - HEADLIGHT		
18	53197-1	SCREW PACKAGE		
19	53238-1	SCREW PACKAGE		
20	54936-25	BAG COVER ASSY - PACKAGED		
21	54937-17	MOTOR COVER ASSY - PACKAG		
22	56750-1	CLIP - BAG INDICATOR		
23	58505	GASKET - BAG COVER		
24	59137	GASKET - MOTOR EXHAUST		
25	60068-2	SCREW PACKAGE		
26	60134	TORS SPRING PKG		
27	60165	RETAINING RING PKG		
28	60192-1	WIRE SPLICE 5		
29	60285	HEPA FILTER PACKAGE		
30	60614-1	REAR HSNQ - PKG		
31	60625-1	HEPA MOTOR & SHROUD ASSY		
32	54937-18	MOTOR COVER ASSY W/O LENS		



- 60071-4 BASE ASSY**
27462A-288N HEIGHT ADJ KNOB
38590 REAR AXLE
38063 BELT GUARD (NOT ILLU)
54943 SPRING
14993A-119N WHEEL CARRIAGE
58206-1 WHEEL AXLE
15234-188N FRONT WHEEL CARRIAGE
27493-288N REAR WHEEL BEL
54432 RETAINING RING
38236A-119N FRONT WHEEL
58506-2 GASKET
57569 FELT GASKET

Ref #	Part	Description	Comments	Qty
1	14993A-119N	CARRIAGE - WHEEL		
2	15234-288N	GUARD - FURNITURE (14")		
3	27462A-288N	OPERATOR - HEIGHT ADJUSTM		
4	27467-288N	RELEASE - HANDLE		
5	27468A-119N	CUFF - HOSE		
6	27493-288N	WHEEL - REAR		
7	38063	GUARD - BELT		
8	38236A-119N	WHEEL - FRONT		
9	38479-2	HOSE - COMPRESSION (PURCH		
10	38590	AXLE - REAR		
11	53197-1	SCREW PACKAGE		
12	54312	BELT PACKAGE ASSEMBLY (U)		
13	54376-2	BELT CAP & GASKET - PACKA		
14	54432	PACKAGE - RETAINING RING		
15	54669-2	SCREW PACKAGE		
16	54943	SPRING PACKAGE		
17	57569	GASKET - FELT		
18	58206-1	AXLE - WHEEL		
19	58506-2	GASKET		
20	60069-22	HOOD ASSEMBLY - PACKAGED		
21	60071-4	BASE ASSY - PKGD		
22	60133	COMPRESSION SPRING - PACK		
23	60253-1	14" DISTURBULATOR ASSY -		

**54646A HOSE ASSY
27461B-119N HOSE ADAPTER**

Ref #	Part	Description	Comments	Qty
1	27461B-119N	ADAPTER - HOSE		
2	54646A	HOSE ASSEMBLY - CARTONED		
3	54669-2	SCREW PACKAGE		
4	54780	TOOL - CREVICE		
5	54784	COMBINATION TOOL - PACKAG		
6	58623	PAPER BAG PKG FA (STYLE A		
7	58728A	NESTING WAND ASSEMBLY		