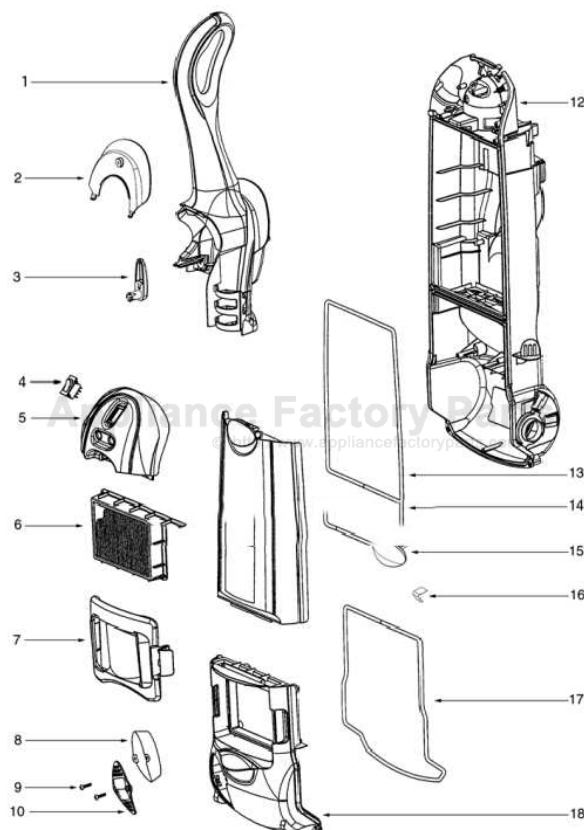


This Owner's Manual is provided and hosted by Appliance Factory Parts.



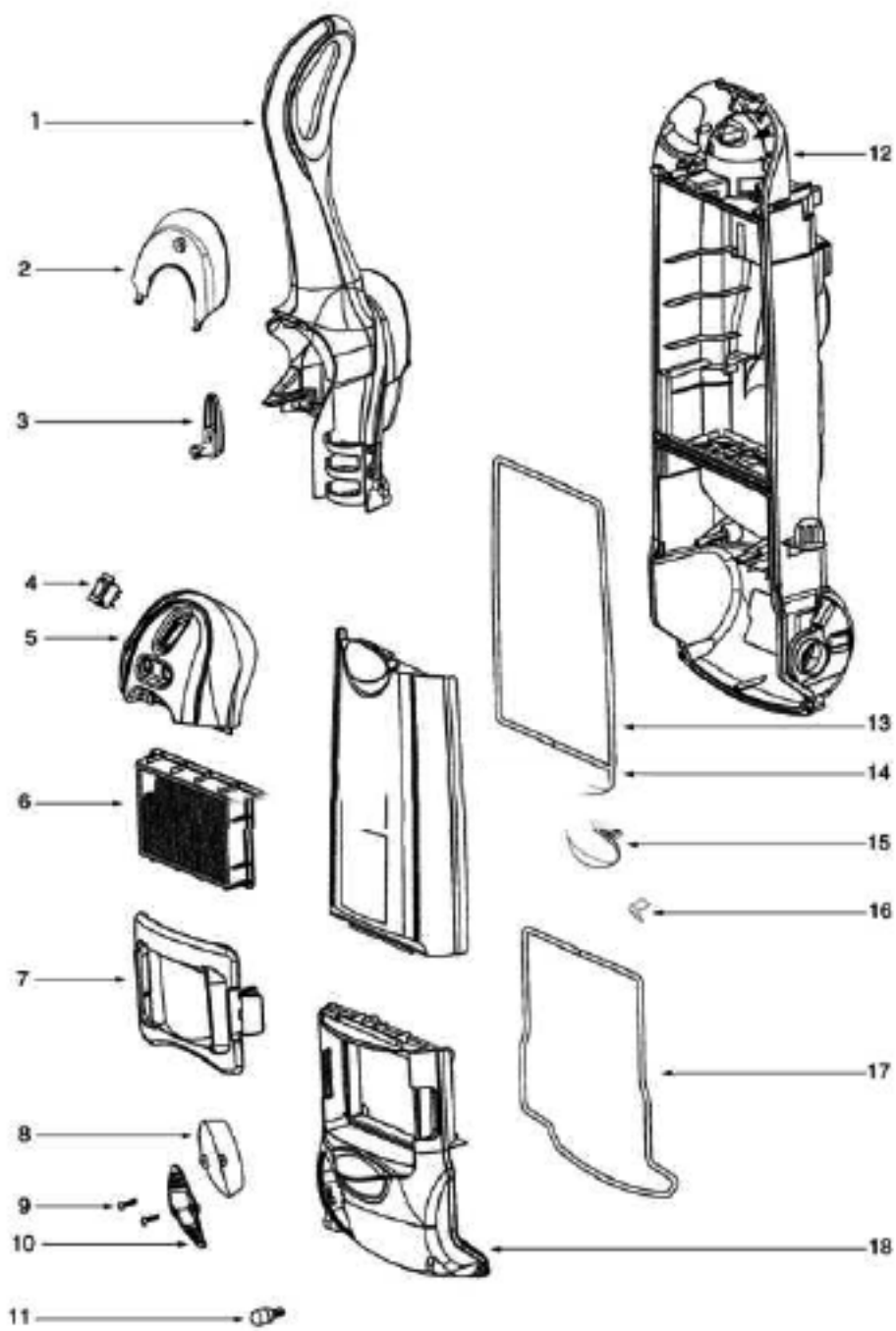
Eureka 4875A Owner's Manual

[Shop genuine replacement parts for Eureka 4875A](#)

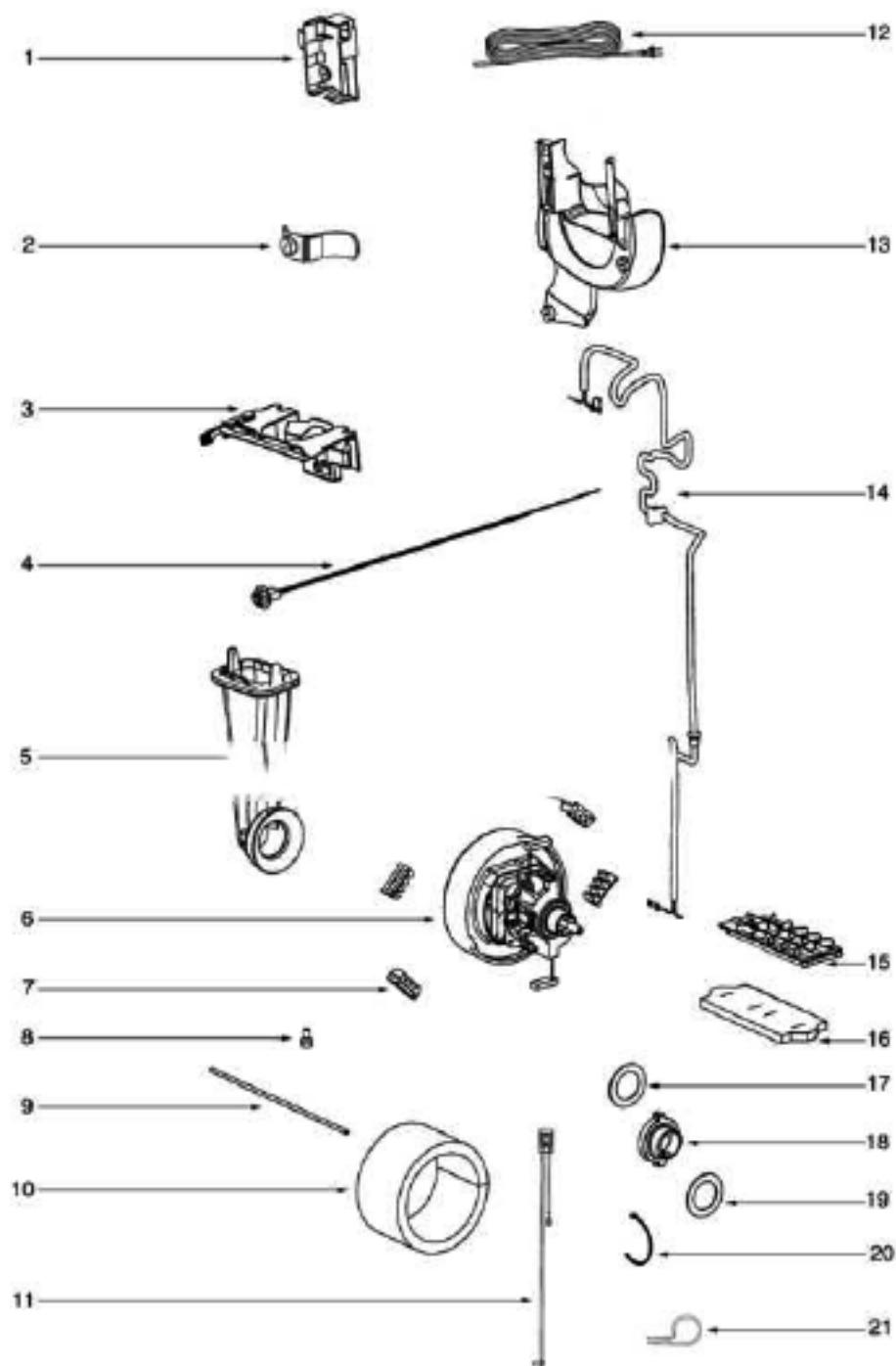


[Find Your Eureka Vacuum Cleaner Parts - Select From 855 Models](#)

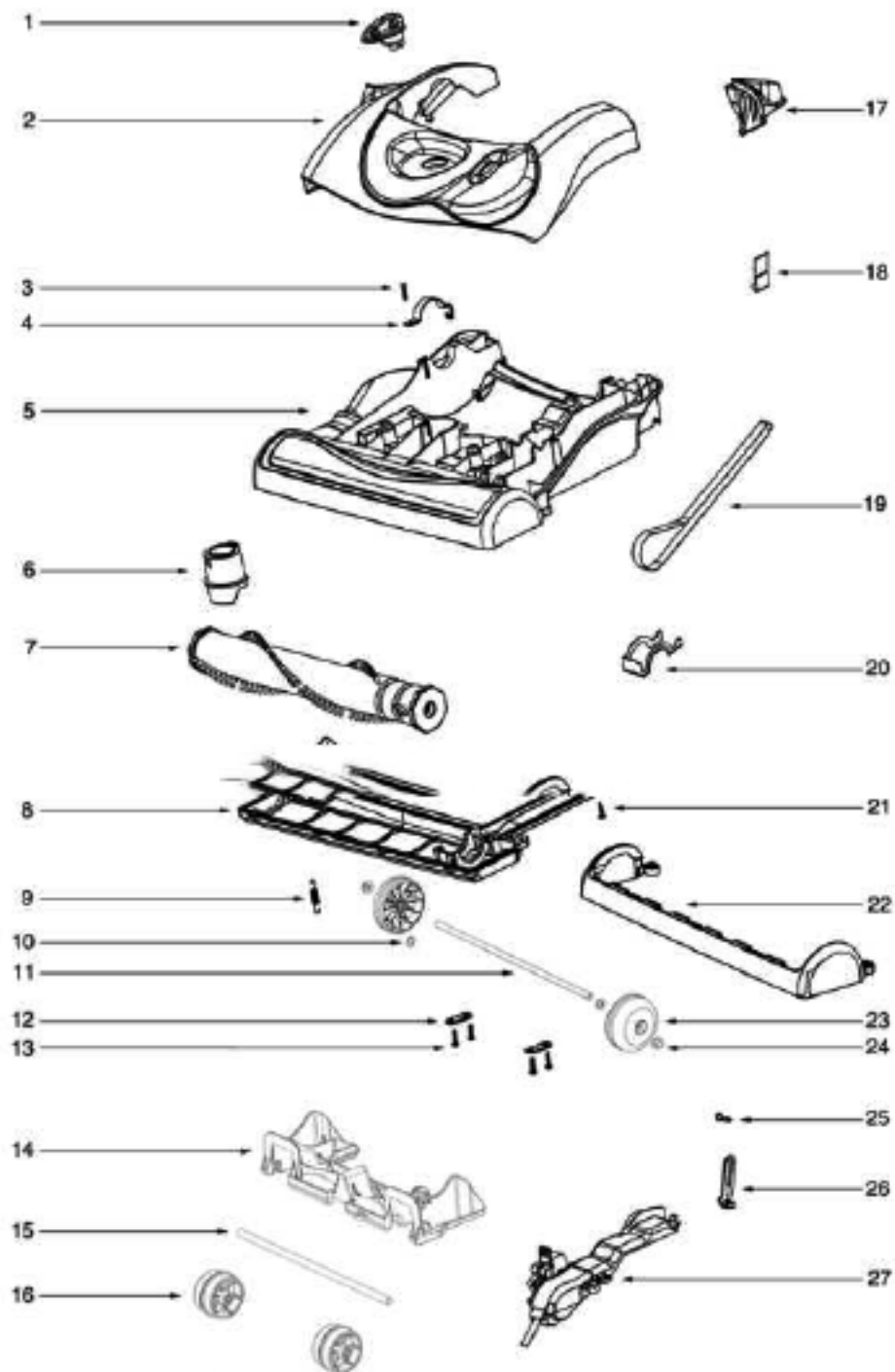
----- Manual continues below -----



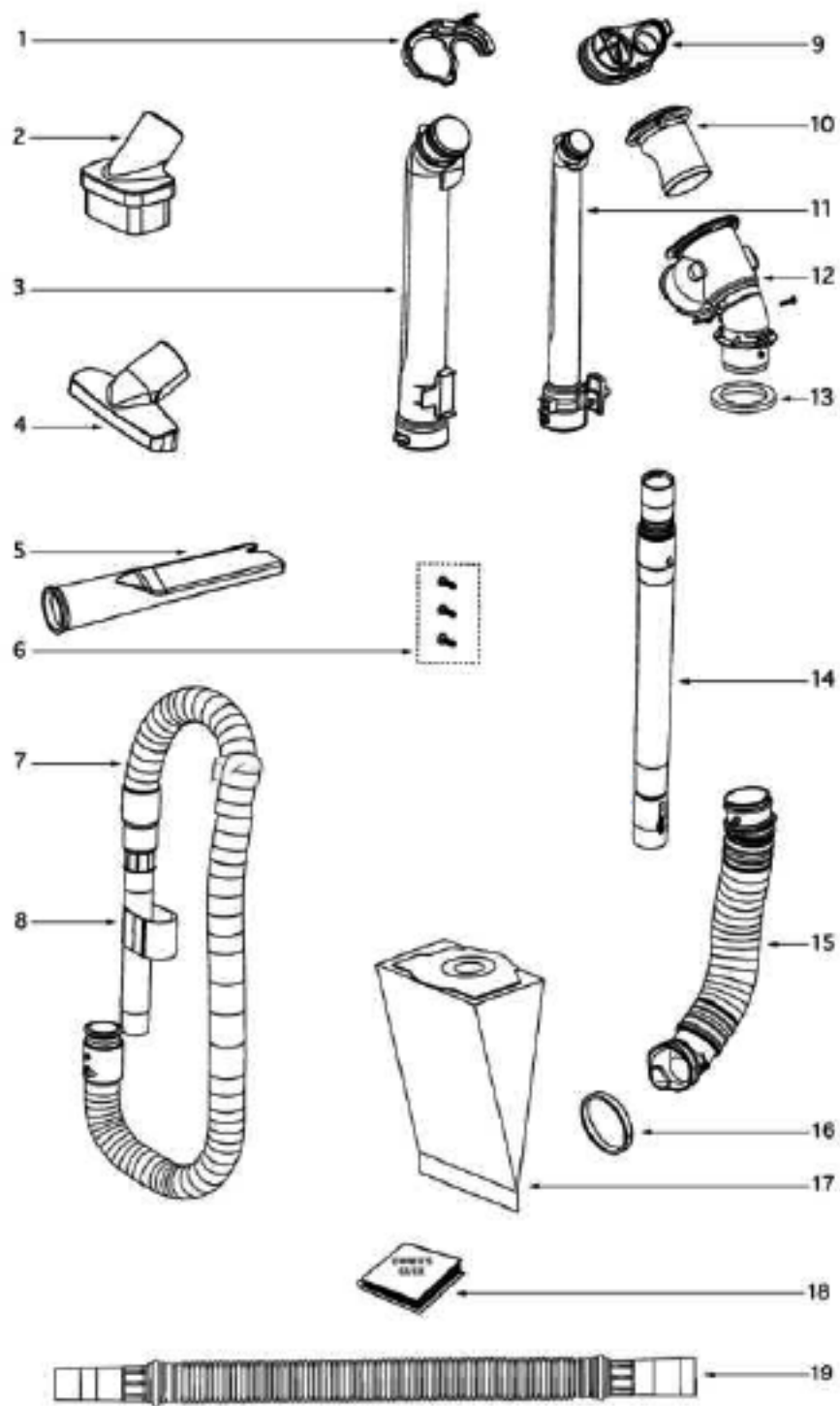
Ref #	Part	Description	Comments	Qty
1	70023-1	UPPER HANDLE ASSEMBLY		
2	70493-119N	HOSE HOOK		
3	28013-119N	RELEASE - CORD		
4	39455-1	SWITCH - ROCKER		
5	61254-3	CONTROL PANEL ASSY - PACK		
6	61111	HEPA FILTER - STYLE HF2		
7	61255-2	FILTER COVER ASSY - PACKA		
8	70664	LIGHT SHIELD		
9	53238-8	SCREW PACKAGE		
10	70088-1	LENS - HEADLAMP		
11	57940-3	LAMP - HEADLIGHT		
12	70049B-119N	HOUSING - REAR		
13	70055	GASKET - BAG CHAMBER		
14	61259-9	BAG COVER ASSY - PACKAGED		
15	70096-355N	LATCH		
16	70097	SPRING - LATCH		
17	70081	GASKET - MOTOR COVER		
18	70086-363N	COVER - MOTOR		



Ref #	Part	Description	Comments	Qty
1	70408-119N	CORD - EXIT		
2	70582-119N	RETAINER - CLIP		
3	70591-1SV	BAG RETAINER ASSY		
4	70701	SOCKET & TERMINAL ASSY		
5	70792-1SV	AIR DUCT ASSEMBLY		
6	61256-1	MOTOR ASSEMBLY - CARTONED		
7	70085	GASKET - MOTOR SUPPORT		
8	60192-1	WIRE SPLICE 5		
9	70651	TUBE - FLEXIBLE		
10	70652	SOUND FOAM		
11	39252-1	THERMOSTAT & TERMINAL ASS		
12	38680-12	SUPPLY CORD & TERMINAL AS		
13	70337-119N	TOOL PAK		
14	70071B	JUMPER CORD ASSY		
15	70853-119N	FRAME - MOTOR FILTER		
16	70082	FILTER - MOTOR		
17	71969-2	GASKET - MOTOR HUB		
18	70084	BUSHING - MOTOR SUPPORT		
19	71969-1	GASKET - MOTOR HUB		
20	46713-5	TIE - CABLE (PURCHASED)		
21	71077A	CLAMP - CABLE		



Ref #	Part	Description	Comments	Qty
1	70031-355N	KNOB - HEIGHT ADJUSTMENT		
2	61252-5	HOOD ASSEMBLY - PACKAGED		
3	53238-27	SCREW PACKAGE		
4	38420-2	CLAMP		
5	61253-5	BASE ASSEMBLY - PACKAGED		
6	70030-119N	ACTUATOR - HT. ADJUSTMENT		
7	61250-1	BRUSHROLL ASSY - CARTONED		
8	70024ASV	SOLEPLATE ASSEMBLY		
9	54943	SPRING PACKAGE		
10	53110	WASHER - WHEEL PACKAGE (1		
11	70029-1	AXLE - REAR		
12	53201	CLAMPS - PACKAGE 10		
13	53238-11	SCREW PACKAGE		
14	70034-119N	WHEEL CARRIAGE		
15	70022-1	AXLE - FRONT		
16	39173A-119N	WHEEL - FRONT		
17	70042-355N	RELEASE - HANDLE		
18	70043	SPRING - HANDLE RELEASE		
19	61110	BELT PACKAGE ASSY - STYLE		
20	70039	GASKET - FELT		
21	53238-8	SCREW PACKAGE		
22	70041-355N	GUARD - FURNITURE		
23	70027A-119N	WHEEL - REAR		
24	60613-1	PUSH NUT PACKAGE (10)		
25	60860	SCREW - PACKAGED		
26	70199-119N	ARM - LINKAGE		
27	70194C-1SV	IDLER/CLAMP ASSEMBLY		



Ref #	Part	Description	Comments	Qty
1	70448-119N	LOCK - CAM		
2	54505-3	DUSTING BRUSH - PACKAGED		
3	61257-1	DIRT TUBE BASE - PACKAGED		
4	38284-3	UPHOLSTERY NOZZLE ASSEMBL		
5	27237-3	TOOL - CREVICE		
6	70790	SCREW PACKAGE		
7	61247-1	HOSE ASSEMBLY - CARTONED		
8	70873	SLEEVE - HOSE		
9	70053	SEAL BUSHING		
10	70062-2SV	VALVE ASSEMBLY		
11	61258-3	DIRT TUBE ASSY - PACKAGED		
12	70655-1	VENTRICLE & GRAPHICS ASSY		
13	70244A	GASKET - VENTRICLE		
14	58728B	NESTING WAND ASSEMBLY		
15	70588-1	CONNECTOR HOSE & ADAPTER		
16	70654	SEAL - BASE ADAPTER		
17	61115	PAPER BAG PKG-STYLE *RR*-		
18	70750	OWNER'S GUIDE		
19	60038-7	HOSE ASSEMBLY - CARTONED		