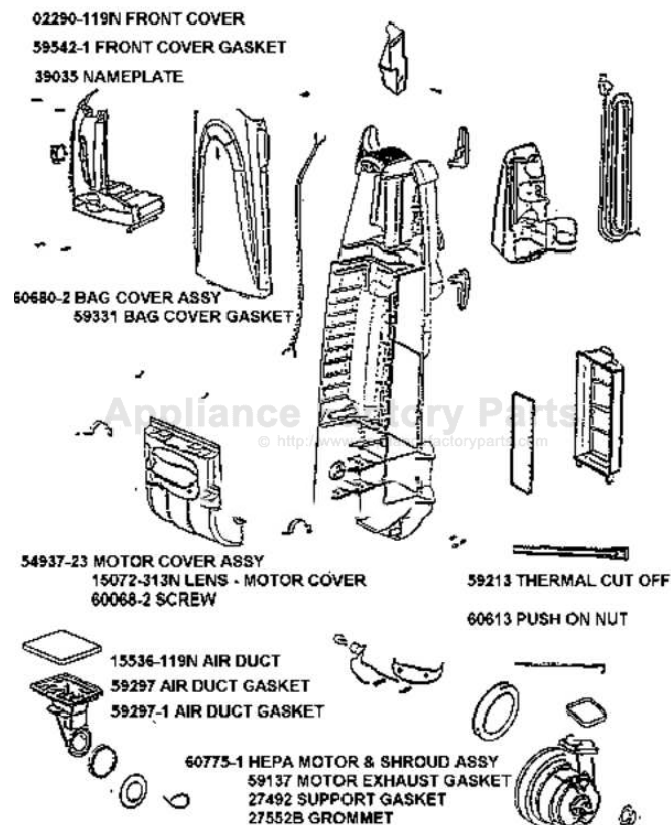


Eureka 5180AT Owner's Manual

[Shop genuine replacement parts for Eureka 5180AT](#)



[Find Your Eureka Vacuum Cleaner Parts - Select From 855 Models](#)

----- Manual continues below -----

02290-119N FRONT COVER
 59542-1 FRONT COVER GASKET
 39035 NAMEPLATE



60680-2 BAG COVER ASSY
 59331 BAG COVER GASKET

54937-23 MOTOR COVER ASSY
 15072-313N LENS - MOTOR COVER
 60068-2 SCREW



15536-119N AIR DUCT
 59297 AIR DUCT GASKET
 59297-1 AIR DUCT GASKET

60775-1 HEPA MOTOR & SHROUD ASSY
 59137 MOTOR EXHAUST GASKET
 27492 SUPPORT GASKET
 27552B GROMMET

59213 THERMAL CUT OFF
 60613 PUSH ON NUT



PARTS2 - 5180AT

Ref #	Part	Description	Comments	Qty
1	02282-119N	HOUSING - REAR		
2	02283-119N	INSERT - TOOL CADDY		
3	02290-119N	FRONT COVER ASSY - PKG		
4	15072-313N	LENS - MOTOR COVER		
5	15536-119N	AIR DUCT		
6	27171A	GASKET		
7	27492	MOTOR GASKET		
8	27552B	GROMMET		
9	28011	UPPER CORD ASSEMBLY		
10	28013-119N	RELEASE - CORD		
11	28073A	SWITCH - ROCKER		
12	38420-2	CLAMP		
13	38469	FILTER - PRE-MOTOR		
14	38680-11	SUPPLY CORD & TERMINALS		
15	38686-1	HEADLAMP SOCKET ASSEMBLY		
16	39023	FLANGE - MOTOR INTAKE		
17	39033-119N	SHIELD - WIRE		
18	39035	NAMEPLATE		
19	46713-5	TIE - CABLE (PURCHASED)		
20	48815	LAMP - HEADLIGHT		
21	53197-1	SCREW PACKAGE		
22	54776	FILTER PACKAGE		
23	54777	FILTER & FRAME - PACKAGED		
24	54937-23	MOTOR COVER ASSY W/O LENS		
25	59137	GASKET - MOTOR EXHAUST		
26	59213	THERMOSTAT 110 DEG (120V)		
27	59408-2	LEAD & TERMINAL ASSEMBLY		
28	59542-1	GASKET		
29	60068-2	SCREW PACKAGE		
30	60192-1	WIRE SPLICE 5		
31	60613	PUSH ON NUT PKG		
32	60680-2	BAG COVER ASSEMBLY - PKGD		
33	60775-1	MOTOR & SHROUD ASSY - PKG		



PARTS1 - 5180AT

Ref#	Part	Description	Comments	Qty
1	14993A-119N	CARRIAGE - WHEEL		
2	15234-288N	GUARD - FURNITURE (14")		
3	27467-288N	RELEASE - HANDLE		
4	27468A-119N	CUFF - HOSE		
5	27794-119N	WHEEL - REAR		
6	28102-1	RECTIFIER & SWITCH ASSY		
7	38238A-119N	WHEEL - FRONT		
8	38479-2	HOSE - COMPRESSION (PURCH		
9	39034	SEAL - YOKE		
10	39047-119N	COVER - DRIVE MOTOR		
11	39121	KNOB ASSEMBLY		
12	53197-1	SCREW PACKAGE		
13	53238-42	SCREW PACKAGE		
14	54312	BELT PACKAGE ASSEMBLY (U)		
15	54376-2	BELT CAP & GASKET - PACKA		
16	54669-2	SCREW PACKAGE		
17	54943	SPRING PACKAGE		
18	57569	GASKET - FELT		
19	58206-1	AXLE - WHEEL		
20	58506-2	GASKET		
21	58814	REAR AXLE		
22	59552	GASKET - CABLE		
23	59586	GASKET - HOOD		
24	59587	SHIELD - MOTOR SPACING		
25	60133	COMPRESSION SPRING - PACK		
26	60252-1	BRUSHROLL ASSEMBLY - CART		
27	60700-2	HOOD & GRAPHICS ASSY - PK		
28	60756-1	TRUARC RETAINING RING - P		
29	60758	DRIVE MOTOR - PKGD		
30	60760-1	BASE ASSY - PKGD		
31	60761-1	CABLE FLAG SCREW - PKGD		

02281-1 HANDLE ASSY COMPLETE

13336B-11 HANDLE GRIP (UPPER)

15461-1 HANDLE TUBE (BLACK)

38965 CABLE ASSY

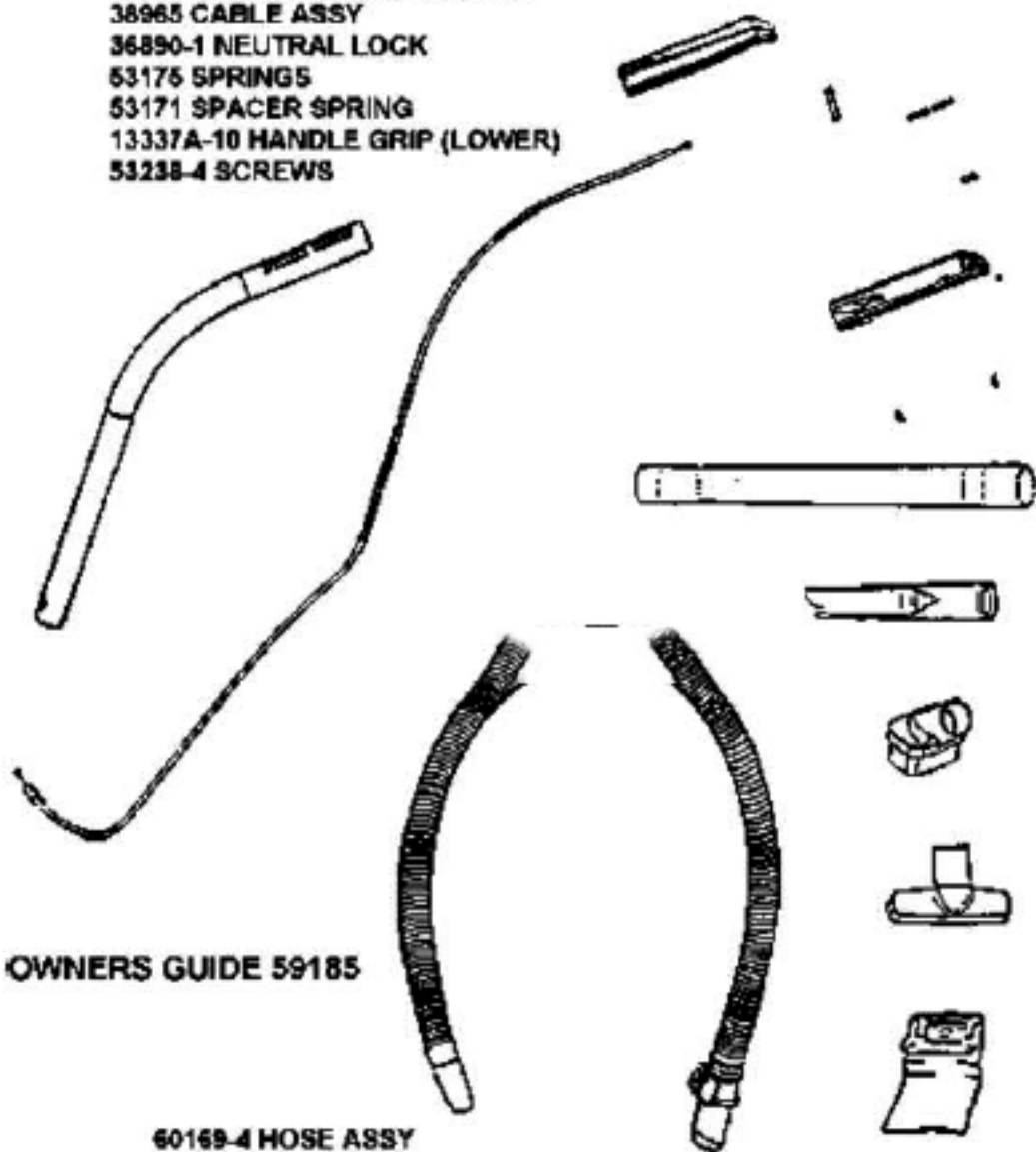
36890-1 NEUTRAL LOCK

53175 SPRINGS

53171 SPACER SPRING

13337A-10 HANDLE GRIP (LOWER)

53238-4 SCREWS



OWNERS GUIDE 59185

60169-4 HOSE ASSY

37057A-3 HOSE COUPLING

28051-119N HOSE ADAPTER

ACCESSORIES - 5180AT

Ref #	Part	Description	Comments	Qty
1	02281-1	HANDLE ASSEMBLY		
2	13336B-11	UPPER GRIP & GRAPHICS ASS		
3	13337A-10	GRIP - HANDLE (LOWER)		
4	15461-1	TUBE - HANDLE		
5	28051-119N	ADAPTER - HOSE		
6	36890-1	LOCK - NEUTRAL		
7	37057A-3	COUPLING - HOSE		
8	38965	This part is obsolete and there is no substitute available.		
9	53171	SPRING - SPACER PACKAGE		
10	53175	SPRING - CENTERING PACKAG		
11	53238-4	SCREW PACKAGE		
12	54782	UPHOLSTERY NOZZLE ASSEMBL		
13	57782-4	DUSTING BRUSH - PACKAGED		
14	58236	PAPER BAG PKG ASSY (STYLE		
15	58728A	NESTING WAND ASSEMBLY		
16	60169-4	HOSE ASSEMBLY - CARTONED		