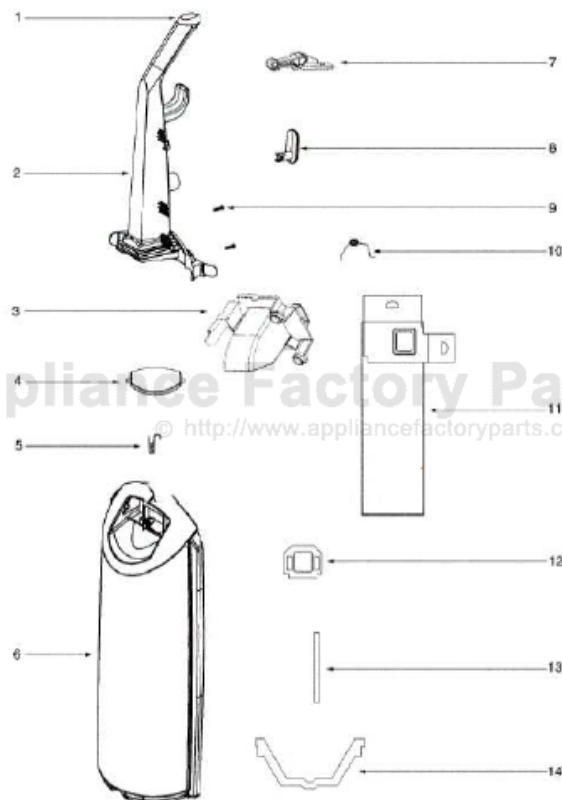


This Owner's Manual is provided and hosted by [Appliance Factory Parts](http://www.appliancefactoryparts.com).



Eureka 5813AV Owner's Manual

[Shop genuine replacement parts for Eureka 5813AV](#)

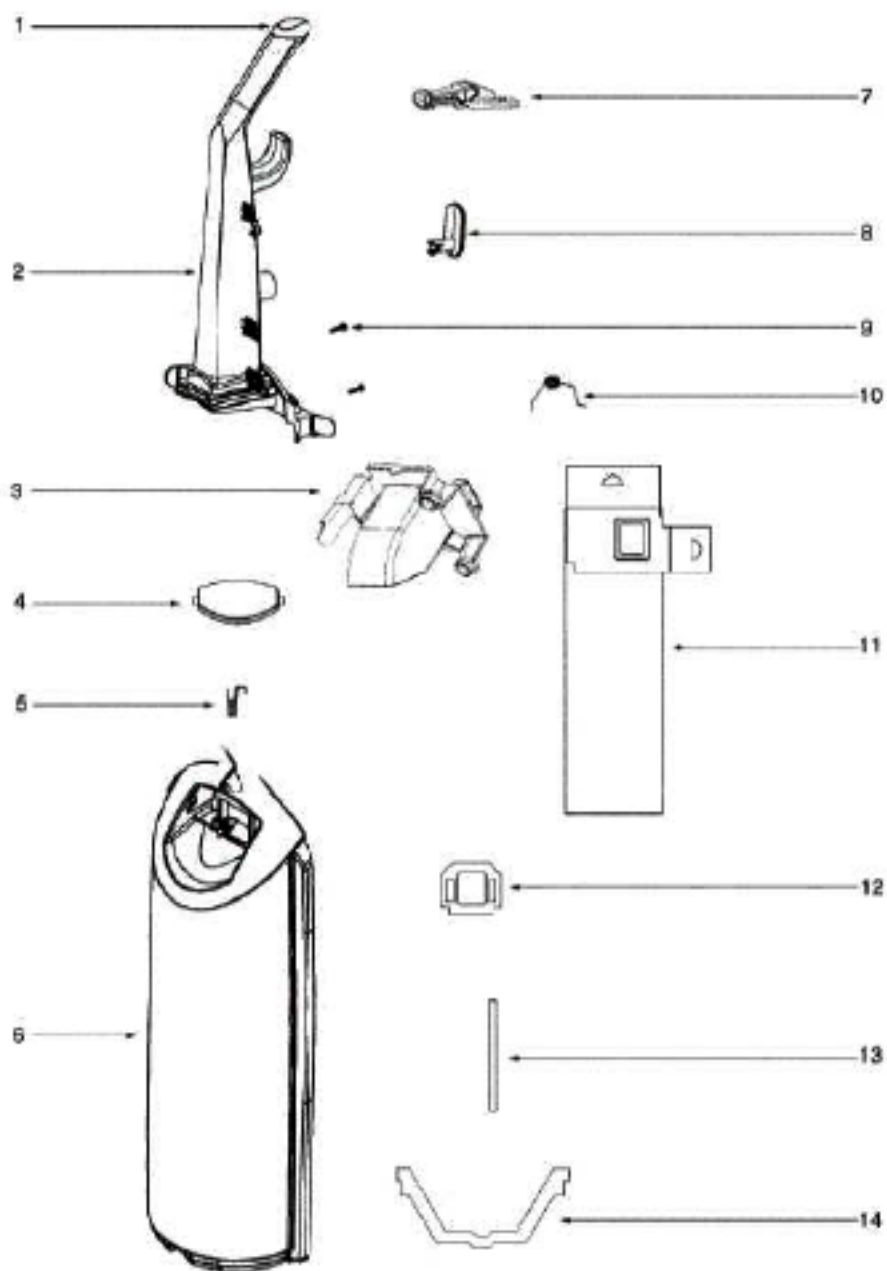


[Find Your Eureka Vacuum Cleaner Parts - Select From 855 Models](#)

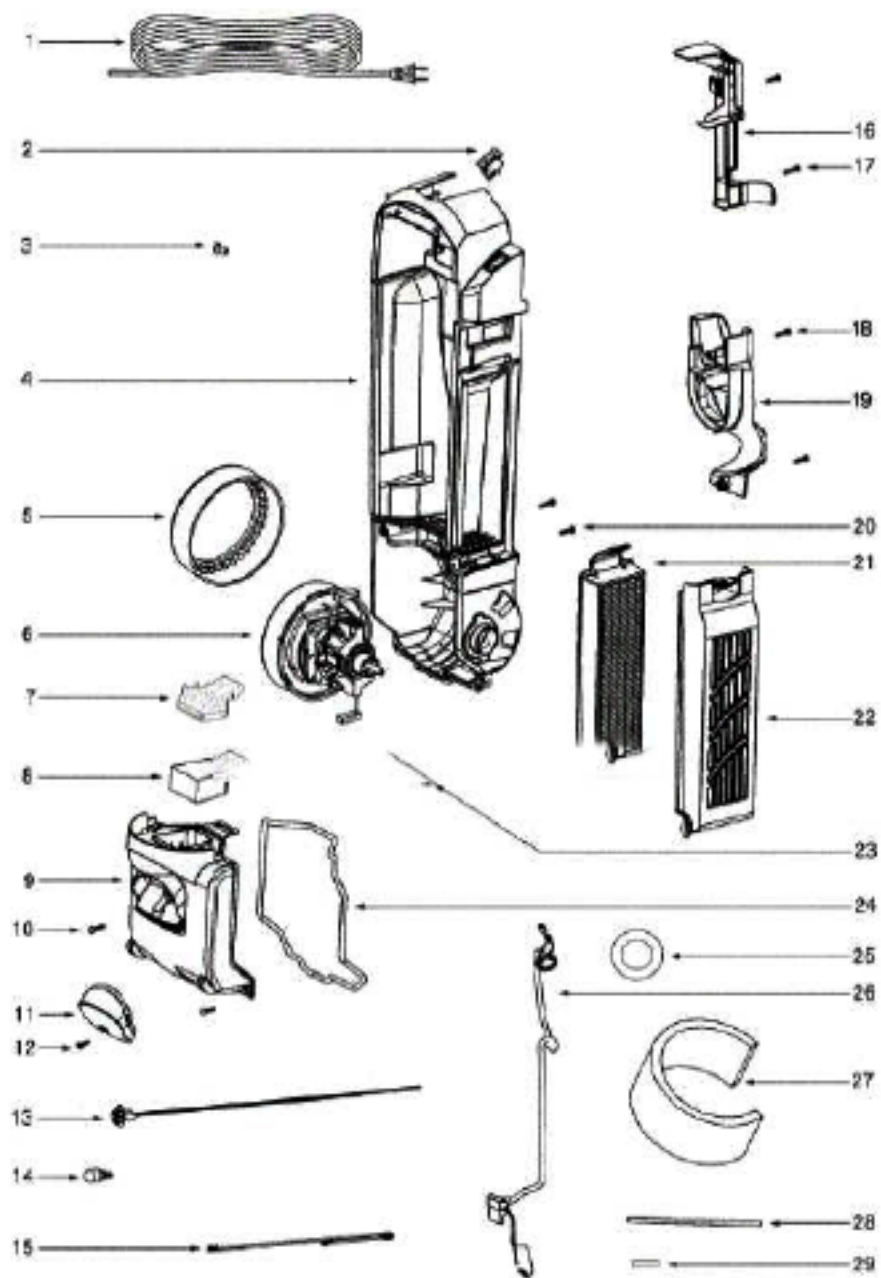
----- Manual continues below part list -----

Available Replacement Parts for Eureka 5813AV

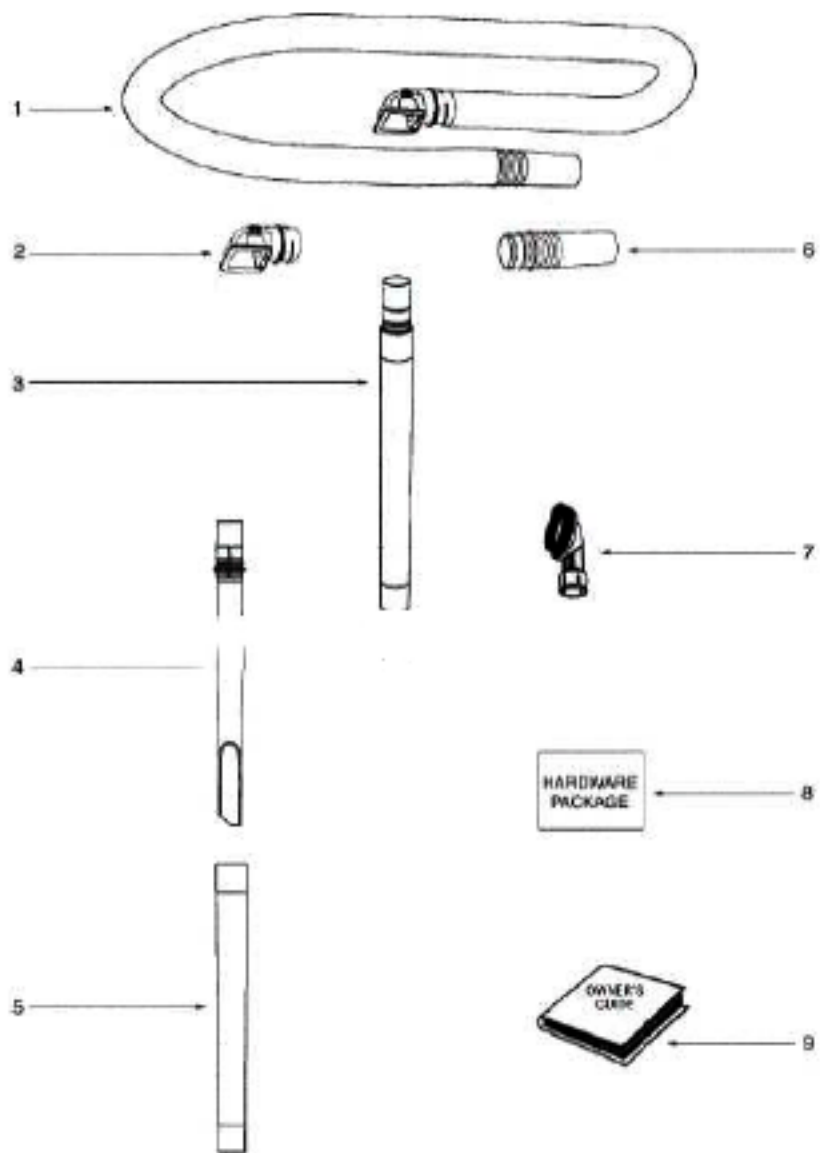
| | |
|------------------------------|--------------------------------------|
| E-61820 | Eureka style LS OEM vacuum bags 3 pk |
| e-39266 | BELT OEM EUREKA EXTENDED LIFE 1 PACK |
| E-61830 | STYLE HF5 EUREKA HEPA FILTER |
| E-71492 | WAND, NESTING W/CREVICE TOOL |
| e-60990-2 | BRUSH |
| E-71725-313N | ADAPTER-HOSE |
| E-61865-4 | hose assembly cartoned |
| ER-2028 | ROLLER |



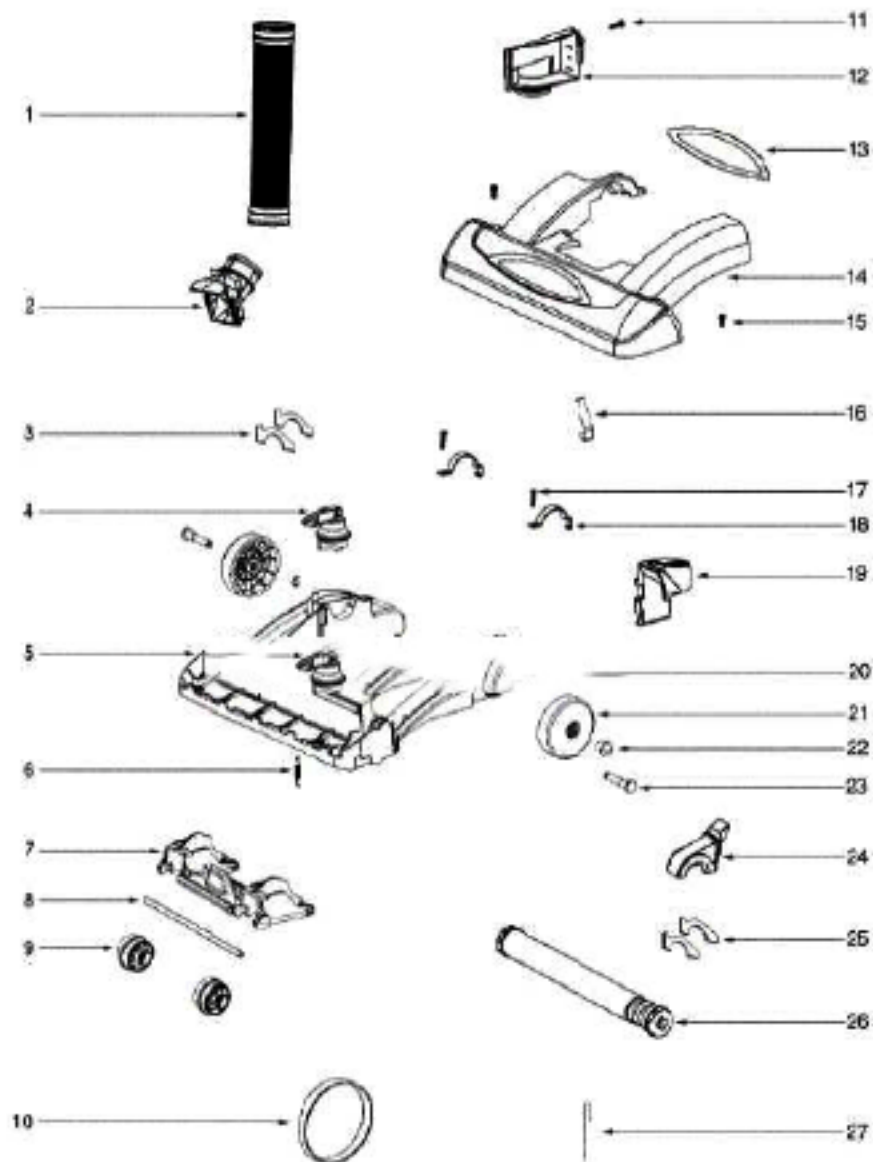
| Ref# | Part | Description | Comments | Qty |
|------|-------------|---------------------------|--------------------------|-----|
| 1 | 71235-119N | CAP - HANDLE | | |
| 2 | 71473A | HANDLE ASSEMBLY | Includes items 1 & 8 | |
| 3 | 71746-119N | ADAPTER - CUP | | |
| 4 | 71830-355N | BAG COVER LATCH | | |
| 5 | 71852 | SPRING - TORSION | | |
| 6 | 61880-8 | BAG COVER ASSEMBLY - PKGD | Includes items 4, 5 & 13 | |
| 7 | 71747-119N | BAG-IN-PLACE ARM | | |
| 8 | 70864A-119N | HOOK - CORD | | |
| 9 | 53238-44 | SCREW PACKAGE | Pkg of 10 | |
| 10 | 71748 | SPRING - TORSION | | |
| 11 | 61820 | PAPER BAG PACKAGE - STYLE | | |
| 12 | 71854 | GASKET - ADAPTER | | |
| 13 | 71512 | GASKET - BAG COVER | | |
| 14 | 71765A | GASKET - LOWER BAG | | |



| Ref# | Part | Description | Comments | Qty |
|------|------------|---------------------------|------------------|-----|
| 1 | 39585-2 | SUPPLY CORD & TERMINAL AS | | |
| 2 | 39455-1 | SWITCH - ROCKER | | |
| 3 | 60192-1 | WIRE SPLICE 5 | | |
| 4 | 71744 | REAR HOUSING ASSEMBLY | Includes Item 24 | |
| 5 | 71649 | GASKET - MOTOR CAN (Eumek | | |
| 6 | 60261-11 | MOTOR ASSEMBLY - PACKAGED | | |
| 7 | 71851-119N | MOTOR SCREEN | | |
| 8 | 71480 | FILTER - PRE-MOTOR | | |
| 9 | 61879-4 | MOTOR COVER ASSY - PKGD | | |
| 11 | 71460-313N | LENS - HEADLAMP | | |
| 12 | 53238-44 | SCREW PACKAGE | Pkg of 10 | |
| 13 | 70701-2 | SOCKET & TERMINAL ASSY | | |
| 14 | 57940-3 | LAMP - HEADLIGHT | | |
| 15 | 39252-1 | THERMOSTAT & TERMINAL ASS | | |
| 16 | 72127 | SWITCH COVER ASSEMBLY | | |
| 19 | 71455-119N | TOOL PACK - LOWER | | |
| 20 | 53238-27 | SCREW PACKAGE | Pkg of 10 | |
| 21 | 61830 | HEPA FILTER PKG - STYLE H | | |
| 22 | 72006-4 | FILTER COVER & GRAPHICS A | | |
| 23 | 70084 | BUSHING - MOTOR SUPPORT | | |
| 24 | 71484 | GASKET - MOTOR COVER | | |
| 25 | 71969-1 | GASKET - MOTOR HUB | | |
| 26 | 71465 | CORD - JUMPER | | |
| 27 | 72224-1 | FOAM - SOUND | | |
| 28 | 70651-1 | TUBE - FLEXIBLE | | |
| 29 | 72167 | PLUG | | |



| Ref# | Part | Description | Comments | Qty |
|------|-------------|---------------------------|----------------------|-----|
| 1 | 61865-4 | HOSE ASSY - CTND | Includes items 2 & 6 | |
| 2 | 71725-313N | ADAPTER - HOSE | | |
| 3 | 71492A | NESTING WAND ASSEMBLY | Includes items 4 & 5 | |
| 4 | 71956A-355N | WAND - CREVICE | | |
| 5 | 71973-119N | WAND - OUTER | | |
| 6 | 70559A-119N | COUPLING - HOSE | | |
| 7 | 60990-2 | COMBINATION BRSH BRSTLD-C | | |
| 8 | 72322 | PACKAGE - HARDWARE | | |
| 9 | 72104B | | | |



| Ref# | Part | Description | Comments | Qty |
|------|-------------|---------------------------|--|-----|
| 1 | 71466 | BASE HOSE ASSY | | |
| 2 | 71447-119N | BASE HOSE ASSY | | |
| 3 | 73153 | FELT - BASE | | |
| 4 | 71448-355N | KNOB - HEIGHT ADJUSTMENT | | |
| 5 | 61877-7 | BASE ASSEMBLY - PACKAGED | Includes items 3,4,6,7,8,9,16,19,20,21,22,23 & 27 | |
| 6 | 54943 | SPRING PACKAGE | | |
| 7 | 71448A-119N | CARRIAGE - WHEEL | | |
| 8 | 71478 | AXLE - FRONT | | |
| 9 | 39173A-119N | WHEEL - FRONT | | |
| 10 | 61120A | BELT PKG ASSY-STYLE U EXT | | |
| 12 | 71726-119N | BASE HOSE ASSY | | |
| 13 | 72178-5 | DELUXE 15" LENS & GRAPHIC | | |
| 14 | 61878-22 | HOOD ASSEMBLY - PACKAGED | Includes item 13 | |
| 15 | 53238-44 | SCREW PACKAGE | Pkg of 10 | |
| 16 | 71574 | SPRING - HANDLE RELEASE | | |
| 17 | 53238-27 | SCREW PACKAGE | Pkg of 10 | |
| 18 | 71487 | CLAMP - MOTOR | | |
| 19 | 71457-355N | RELEASE - HANDLE | | |
| 20 | 54432-1 | PACKAGE - RETAINING RING | | |
| 21 | 72117-119N | WHEEL - REAR | | |
| 22 | 72113-1 | BUSHING - AXLE | | |
| 23 | 38590A | AXLE - REAR | | |
| 24 | 71741A | BELT CAP ASSEMBLY | Includes item 25 | |
| 25 | 73152 | FELT - BELT CAP | | |
| 26 | 62228-3 | BRUSHROLL ASSEMBLY - CART | | |
| 27 | 38063 | GUARD - BELT | | |
| | 30474A | FAN - MOTOR COOLING | | |
| | 51108A-10 | RIVET PACKAGE | | |
| | 61000 | SWITCH SUPPORT | | |
| | 71005 | GASKET - BAG COVER | | |
| | 71705-4 | CYCLONIC CASSETTE ASSY | | |