

This Owner's Manual is provided and hosted by [Appliance Factory Parts](#).



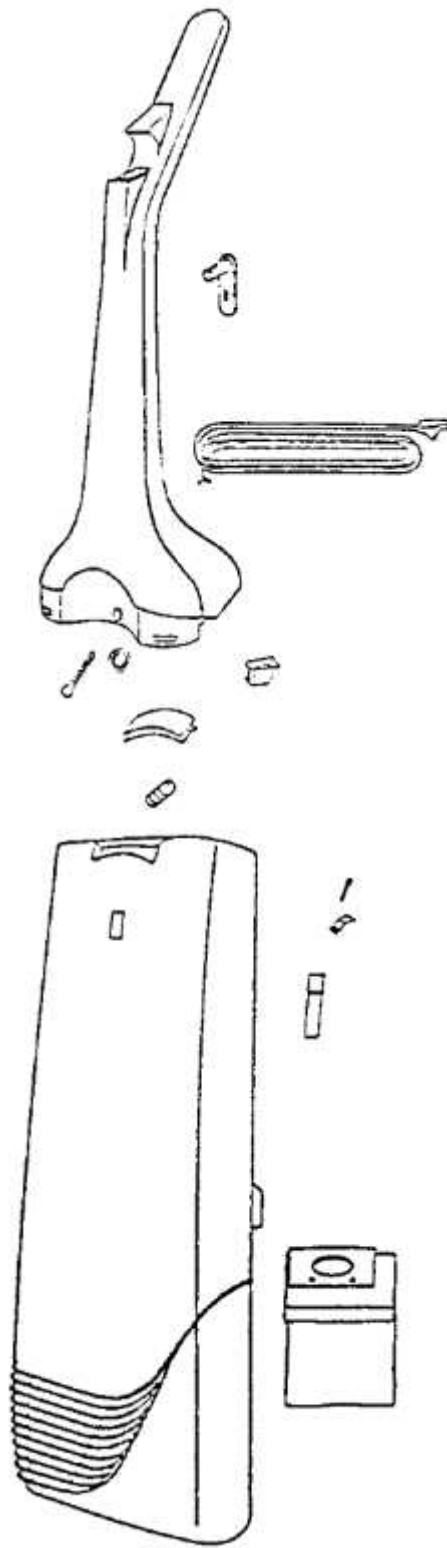
Eureka 6426ATV Owner's Manual

[Shop genuine replacement parts for Eureka 6426ATV](#)

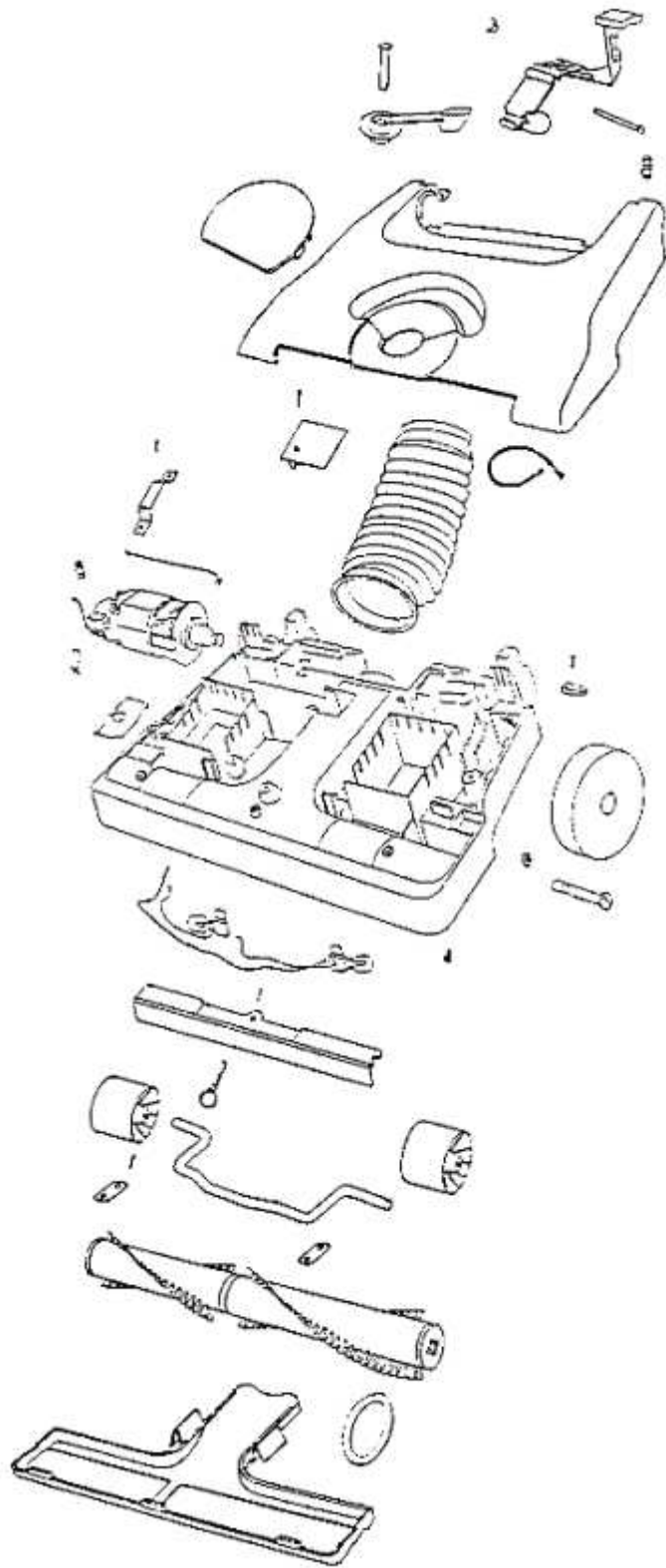


[Find Your Eureka Vacuum Cleaner Parts - Select From 853 Models](#)

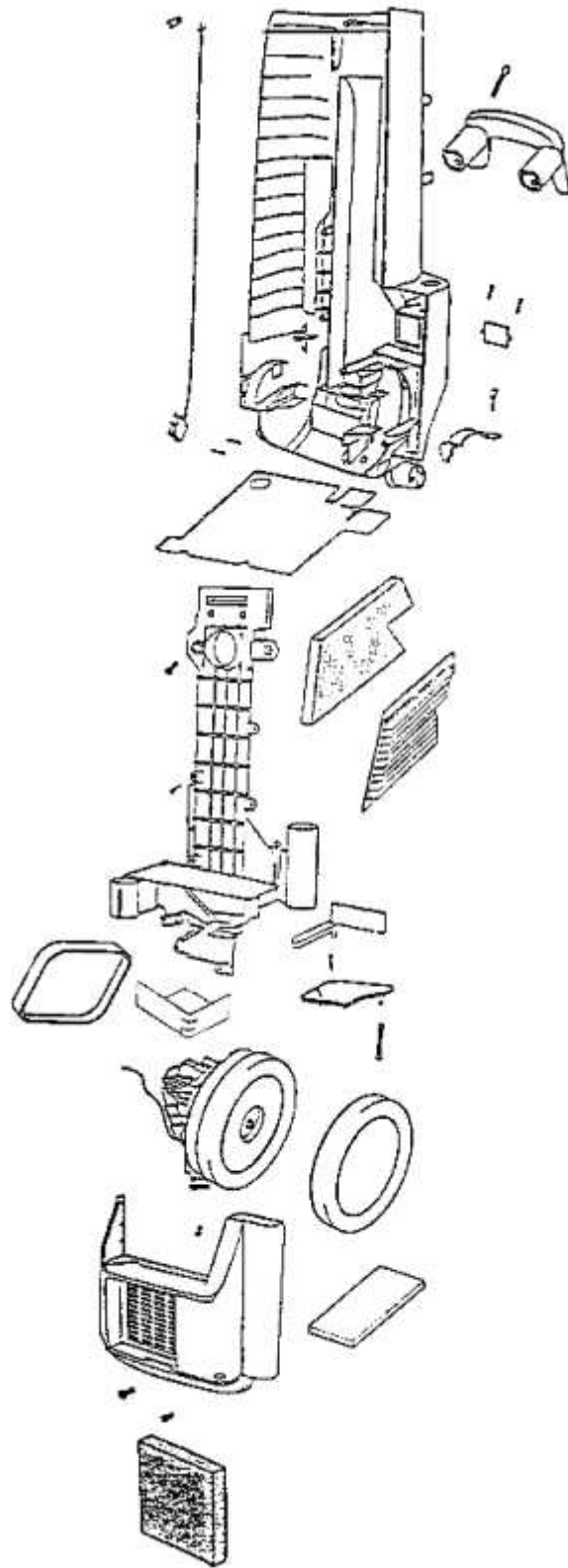
----- Manual continues below -----



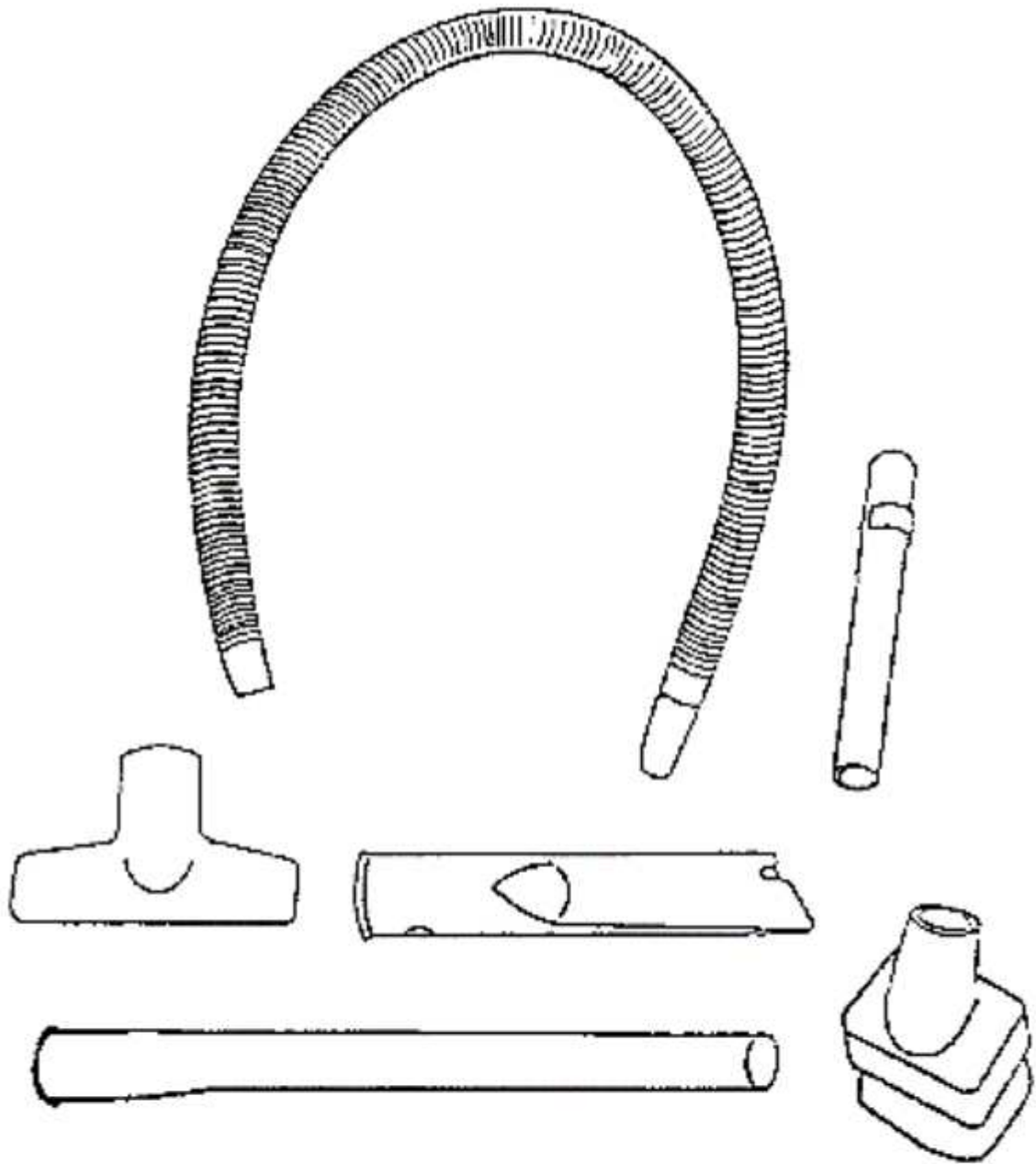
| Ref # | Part | Description | Comments | Qty |
|-------|----------|---------------------------|----------|-----|
| 1 | 02019A-5 | HANDLE ASSEMBLY | | |
| 2 | 26317B-3 | RELEASE - CORD | | |
| 3 | 27514 | LATCH - BAG COVER | | |
| 4 | 27871 | SWITCH - ROCKER | | |
| 5 | 37761-2 | BAG INDICATOR ASSEMBLY | | |
| 6 | 38394-6 | SUPPLY CORD & TERMINAL AS | | |
| 7 | 53222-5 | LOCKWASHERS - PACKAGE 10 | | |
| 8 | 53238-1 | SCREW PACKAGE | | |
| 9 | 53238-37 | SCREW PACKAGE | | |
| 10 | 54711 | PACKAGE - SPRING | | |
| 11 | 56750 | CLIP - BAG INDICATOR | | |
| 12 | 58183 | PAPER BAG - STYLE Y | | |



| Ref # | Part | Description | Comments | Qty |
|-------|------------|---------------------------|----------|-----|
| 1 | 02235-119N | PLATE - SOLE | | |
| 2 | 26270-3 | WHEEL - REAR | | |
| 3 | 27372-1 | LEVER - ADJUSTMENT | | |
| 4 | 27376 | LAMP SOCKET & HARNESS ASS | | |
| 5 | 27405 | PEDAL - FOOT | | |
| 6 | 27412-1 | LOWER CORD ASSEMBLY | | |
| 7 | 27483-2 | ADJUSTMENT COVER & GRPHCS | | |
| 8 | 35859A-1 | WHEEL - FRONT | | |
| 9 | 38392 | AXLE | | |
| 10 | 38407 | CAP - FOOT PEDAL | | |
| 11 | 38457 | AXLE - FRONT | | |
| 12 | 46713 | TIE - CABLE (PURCHASED) | | |
| 13 | 46713-2 | TIE - CABLE | | |
| 14 | 52100 | BELT PKG ASSY (UPRIGHT) | | |
| 15 | 53076-2 | SPRING & AXLE PACKAGE (6) | | |
| 16 | 53201 | CLAMPS - PACKAGE 10 | | |
| 17 | 53214-2 | WIRE SPLICE 5 | | |
| 18 | 53238-11 | SCREW PACKAGE | | |
| 19 | 53238-4 | SCREW PACKAGE | | |
| 20 | 54343-5 | MOTOR ASSEMBLY - PACKAGED | | |
| 21 | 54705-10 | HOOD ASSY - PACKAGE | | |
| 22 | 54706-6 | BASE ASSY - PACKAGE | | |
| 23 | 54707 | PACKAGE - PUSH ON NUT | | |
| 24 | 54708 | PACKAGE - SPRING | | |
| 25 | 54709 | PACKAGE - PRONG LOCK RETA | | |
| 26 | 57940 | LAMP - HEADLIGHT | | |
| 27 | 58244 | SCREW - HEIGHT ADJUSTMENT | | |
| 28 | 58298 | PIN - FOOT PEDAL | | |
| 29 | 58421 | SHIELD - WIRE | | |
| 30 | 58430 | CLAMP CABLE | | |
| 31 | 60167-1 | ROLL ASSEMBLY REPLACEMENT | | |



| Ref # | Part | Description | Comments | Qty |
|-------|----------|---------------------------|----------|-----|
| 1 | 14909-1 | HANDLE - CARRYING | | |
| 2 | 14966 | GASKET - ACCESS DOOR | | |
| 3 | 14967-1 | ACCESS DOOR ASSY | | |
| 4 | 27345 | ARM - CONVERTER | | |
| 5 | 27384 | FILTER - MOTOR | | |
| 6 | 27385 | FRAME - FILTER | | |
| 7 | 27410 | SWITCH - MICRO SNAP | | |
| 8 | 27666 | DOOR - CONVERTER VALVE | | |
| 9 | 27686 | SOUND FOAM | | |
| 10 | 27898 | UPPER CORD ASSEMBLY | | |
| 11 | 27902-1 | REAR HOUSING ASSEMBLY | | |
| 12 | 27905-1 | MTR COVER - PKGD - DOM. | | |
| 13 | 38243-1 | CLAMP - MOTOR | | |
| 14 | 38410 | SHIELD - MOTOR | | |
| 15 | 38427 | CLIP - WAND | | |
| 16 | 38618 | DEFLECTOR - AIR | | |
| 17 | 53214-2 | WIRE SPLICE 5 | | |
| 18 | 53238-28 | SCREW PACKAGE | | |
| 19 | 53238-33 | SCREW PACKAGE | | |
| 20 | 53238-34 | SCREW PACKAGE | | |
| 21 | 53238-35 | SCREW PACKAGE | | |
| 22 | 53238-4 | SCREW PACKAGE | | |
| 23 | 54669-1 | SCREW PACKAGE | | |
| 24 | 54710 | PACKAGE - SPRING | | |
| 25 | 54938-2 | SCREW PACKAGE | | |
| 26 | 55463 | GASKET - MOTOR STACK | | |
| 27 | 60012 | MOTOR ASSY - CTND | | |
| 28 | 60032-2 | DIRT CHUTE COVER W/GASKET | | |
| 29 | 60140 | HEPA FILTER PAK | | |



Hardware
Pkg.

| Ref # | Part | Description | Comments | Qty |
|-------|---------|---------------------------|----------|-----|
| 1 | 14990-2 | WAND ASSEMBLY | | |
| 2 | 38381-1 | RING - BLEEDER | | |
| 3 | 54723 | WAND - STRAIGHT | | |
| 4 | 54780 | TOOL - CREVICE | | |
| 5 | 54782 | UPHOLSTERY NOZZLE ASSEMBL | | |
| 6 | 54787 | DUSTING BRUSH - PACKAGED | | |
| 7 | 58068 | PACKAGE - HARDWARE | | |
| 8 | 60168 | HOSE ASSY - CRTND | | |