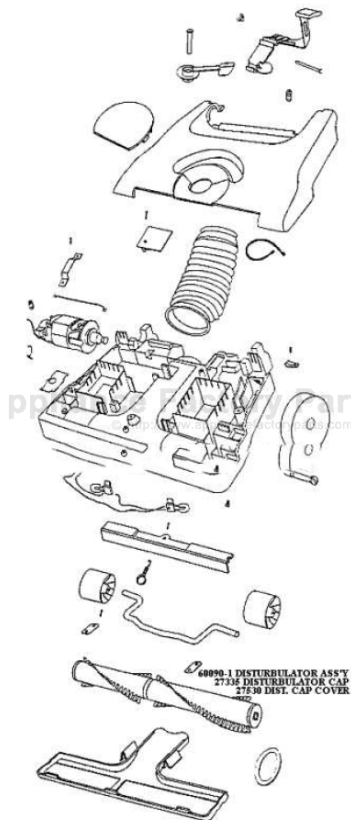


This Owner's Manual is provided and hosted by [Appliance Factory Parts](#).



Eureka 6450AT Owner's Manual

[Shop genuine replacement parts for Eureka 6450AT](#)



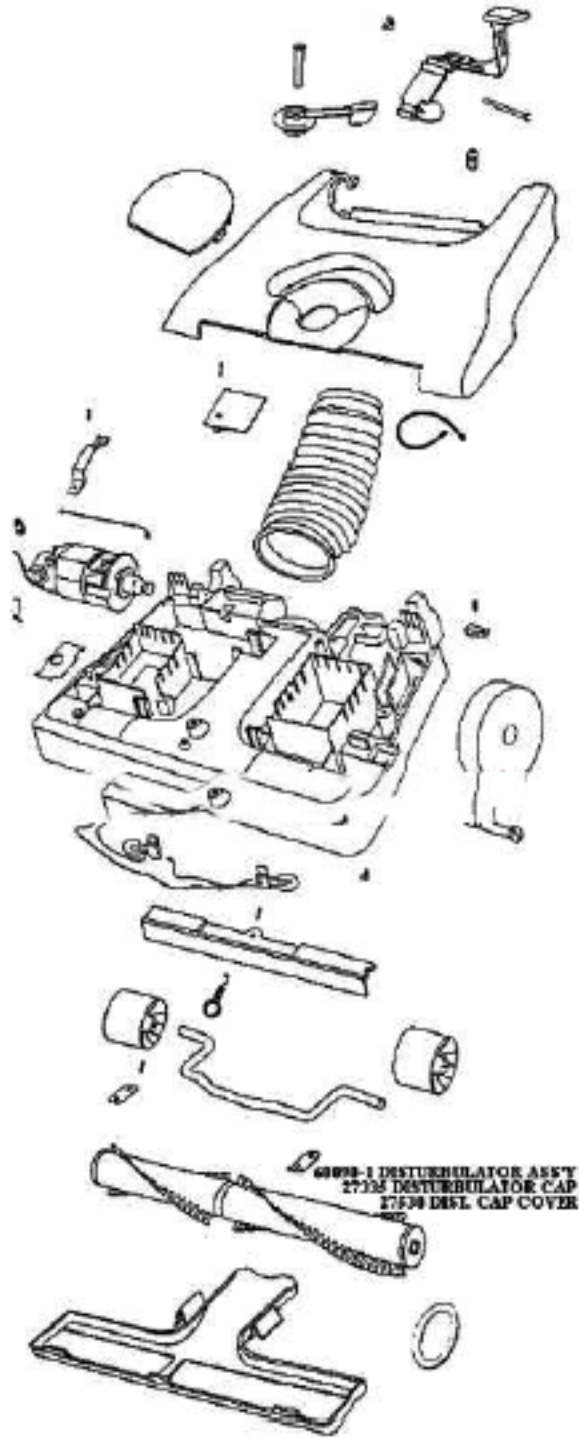
[Find Your Eureka Vacuum Cleaner Parts - Select From 855 Models](#)

----- Manual continues below part list -----

Available Replacement Parts for Eureka 6450AT

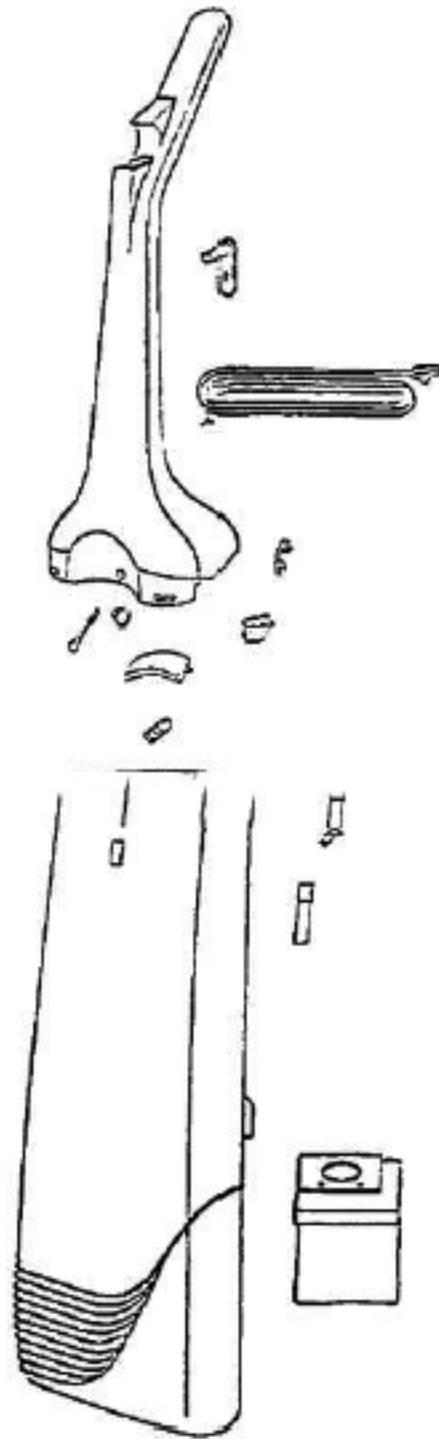
[E-30563](#)

BELT 1 PACK OEM EUREKA

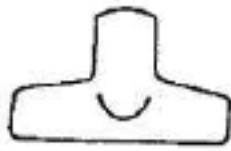
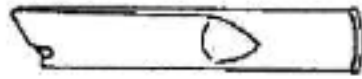


Ref #	Part	Description	Comments	Qty
1	02017-1	PLATE - SOLE		
2	26270-3	WHEEL - REAR		
3	27335	DISTURBULATOR CAP		
4	27372-1	LEVER - ADJUSTMENT		
5	27376	LAMP SOCKET & HARNESS ASS		
6	27405	PEDAL - FOOT		
7	27412-1	LOWER CORD ASSEMBLY		
8	27483-8	ADJUSTMENT COVER & GRPHCS		
9	27530	DISCONTINUED! Please call the service center at 1-800-246-7808 for more information.		
10	35859A-1	WHEEL - FRONT		
11	38392	AXLE		
12	38407	CAP - FOOT PEDAL		
13	38457	AXLE - FRONT		
14	46713	TIE - CABLE (PURCHASED)		
15	46713-2	TIE - CABLE (PURCHASED)		
16	52100	BELT PKG ASSY (UPRIGHT)		
17	53076-2	SPRING & AXLE PACKAGE (S)		
18	53201	CLAMPS - PACKAGE 10		
19	53214-2	WIRE SPLICE 5		
20	53238-11	SCREW PACKAGE		
21	53238-4	SCREW PACKAGE		
22	54343-3	MOTOR ASSEMBLY - PACKAGED		
23	54705-8	HOOD ASSY - PACKAGE		
24	54706-5	BASE REPLACEMENT KIT		
25	54707	PACKAGE - PUSH ON NUT		
26	54708	PACKAGE - SPRING		
27	54709	PACKAGE - PRONG LOCK RETA		
28	57940	LAMP - HEADLIGHT		
29	58244	SCREW - HEIGHT ADJUSTMENT		
30	58295	CLAMP CABLE		
31	58298	PIN - FOOT PEDAL		
32	58421	SHIELD - WIRE		
33	60090-1	ROLL ASSEMBLY REPLACEMENT		

Ref#	Part	Description	Comments	Qty
1	14909-1	HANDLE - CARRYING		
2	14966	GASKET - ACCESS DOOR		
3	14967-1	ACCESS DOOR ASSY		
4	27345	ARM - CONVERTER		
5	27384	FILTER - MOTOR		
6	27385	FRAME - FILTER		
7	27410	SWITCH - MICRO SNAP		
8	27536A	FILTER - FINAL		
9	27666	DOOR - CONVERTER VALVE		
10	27686	SOUND FOAM		
11	38243-1	CLAMP - MOTOR		
12	38410	SHIELD - MOTOR		
13	38427	CLIP - WAND		
14	38618	DEFLECTOR - AIR		
15	53214-2	WIRE SPLICE 5		
16	53238-23	SCREW PACKAGE		
17	53238-28	SCREW PACKAGE		
18	53238-34	SCREW PACKAGE		
19	53238-35	SCREW PACKAGE		
20	53238-4	SCREW PACKAGE		
21	54669-1	SCREW PACKAGE		
22	54710	PACKAGE - SPRING		
23	54938-2	SCREW PACKAGE		
24	55463	GASKET - MOTOR STACK		
25	60012	MOTOR ASSY - CTND		
26	60074	REAR HOUSING KIT		



Ref#	Part	Description	Comments	Qty
1	26317B-3	RELEASE - CORD		
2	27514	LATCH - BAG COVER		
3	37761-2	BAG INDICATOR ASSEMBLY		
4	38348-3	SWITCH - ROCKER		
5	38394-3	SUPPLY CORD & TERMINAL AS		
6	53190-1	BUSHING - STRAIN RELIEF-P		
7	53222-5	LOCKWASHERS - PACKAGE 10		
8	53238-1	SCREW PACKAGE		
9	53238-37	SCREW PACKAGE		
10	54711	PACKAGE - SPRING		
11	56750	CLIP - BAG INDICATOR		
12	58183	PAPER BAG PKG ASSY (STYLE		



**Hardware
Pkg.**

Ref#	Part	Description	Comments	Qty
1	54780	TOOL - CREVICE		
2	54782	UPHOLSTERY NOZZLE ASSEMBL		
3	54787	DUSTING BRUSH - PACKAGED		
4	58068	PACKAGE - HARDWARE		
5	60168	HOSE ASSY - CRTND		
6	27763A-1	STRAIGHT WAND		
7	58069B	OWNER'S GUIDE		