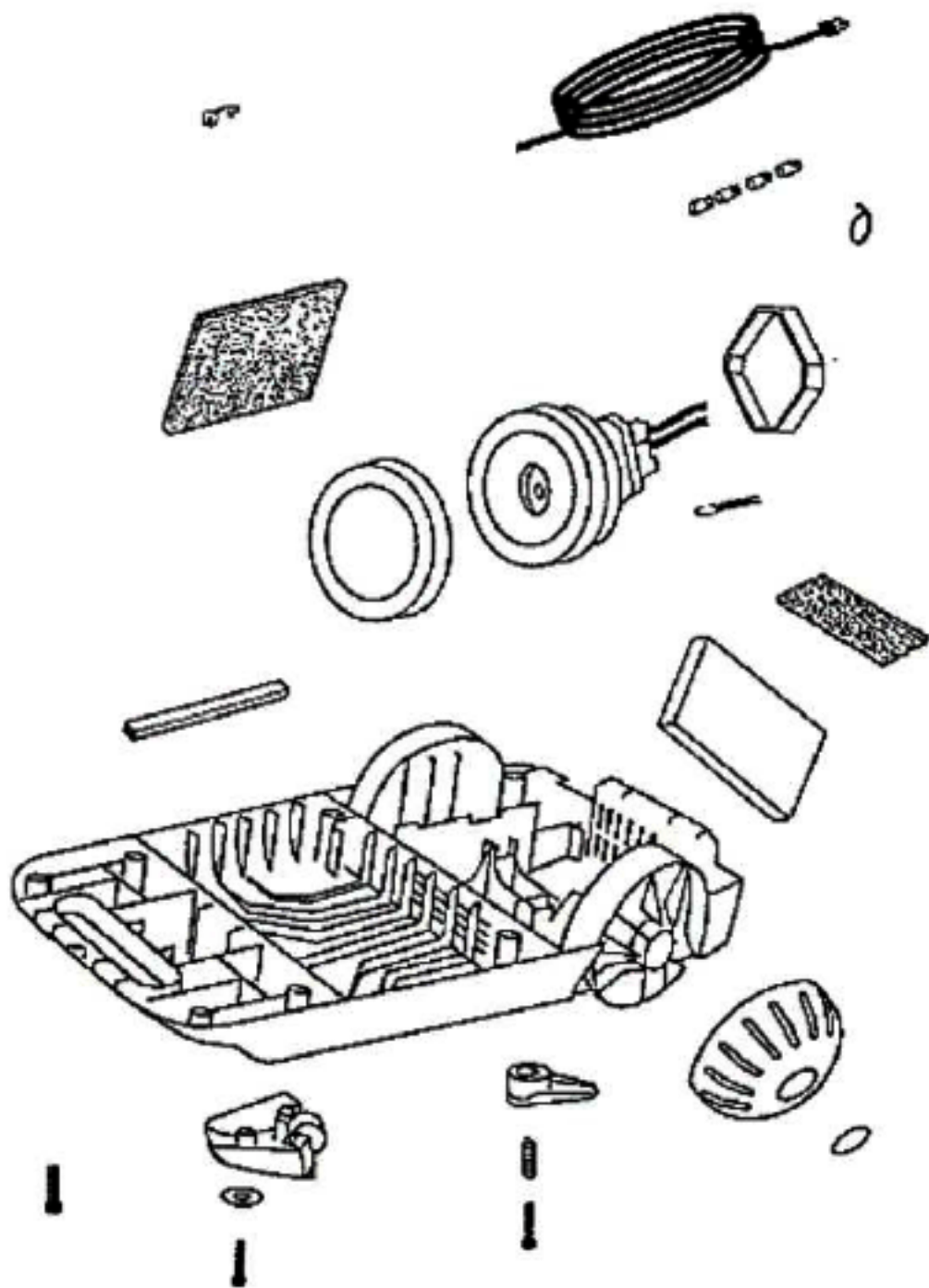


PARTS1 - 6750A

Ref #	Part	Description	Comments	Qty
1	14905-2	PLATE - HOSE		
2	27380A-1	SEAL - SWIVEL HOSE		
3	36341-2	SWITCH - PUSH		
4	37653-3	BLEEDER		
5	37761-1	BAG INDICATOR ASSEMBLY		
6	38386-1	BUTTON		
7	53238-1	SCREW PACKAGE		
8	53257-1	SCREWS - PACKAGE 10		
9	54546-1	This part is obsolete and there is no substitute available.		
10	54635-1	BAG COVER & GRAPHICS - PK		
11	54637-1	CONNECTOR ASSY - HOSE (CR		
12	55446	NUT - SWITCH		
13	55794	SPRING		
14	56750	CLIP - BAG INDICATOR		
15	57698	PAPER BAG PKG ASSY (STYLE		



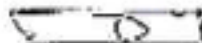
PARTS2 - 6750A

Ref #	Part	Description	Comments	Qty
1	26715A	GASKET - MOTOR MOUNTING		
2	27366-1	WHEEL - REAR		
3	27382-2	CORD - LOW LEAD (18 GA)		
4	37403-1	CASTER		
5	37490-3	RELEASE - CORD		
6	37657	FILTER - MOTOR		
7	37710-1	FILTER - EXHAUST		
8	37966	SOUND FOAM		
9	38363-1	WHEEL - REAR		
10	53141	TIE - CABLE (PURCHASED)		
11	53190-1	BUSHING - STRAIN RELIEF-P		
12	53197-1	SCREW PACKAGE		
13	53214-2	WIRE SPLICE 5		
14	53238-8	SCREW PACKAGE		
15	54404	MOTOR ASSY - CTND		
16	55483	GASKET - MOTOR STACK		
17	56088	SPRING		
18	56326-1	TUBE - WIRE		
19	56376	WASHER		
20	57720	THERMOSTAT		

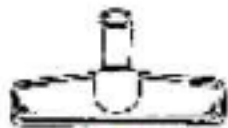
6750A



ITEM 10
1/2" X 1/8" X 12" ALUMINUM STRIP



ITEM 11
1/2" X 1/8" X 1/2" ALUMINUM



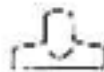
ITEM 12
1/2" X 1/8" X 1/2" ALUMINUM



ITEM 13
1/2" X 1/8" X 1/2" ALUMINUM



ITEM 14
1/2" X 1/8" X 1/2" ALUMINUM



ITEM 15
1/2" X 1/8" X 1/2" ALUMINUM

ACCESSORIES - 6750A

Ref #	Part	Description	Comments	Qty
1	13719-3	WAND - STRAIGHT		
2	27354-3	ELBOW		
3	38401-1	ELBOW		
4	53994-13	CARPET NOZZLE & ELBOW - P		
5	54355-3	TOOL - CREVICE		
6	54505-1	DUSTING BRUSH - PACKAGED		
7	54506-1	UPHOLSTERY NOZZLE ASSEMBL		
8	54533-4	FLOOR & WALL BRUSH - PACK		