

This Owner's Manual is provided and hosted by [Appliance Factory Parts](http://Appliance Factory Parts).



# Eureka 6875A Owner's Manual

[Shop genuine replacement parts for Eureka 6875A](#)

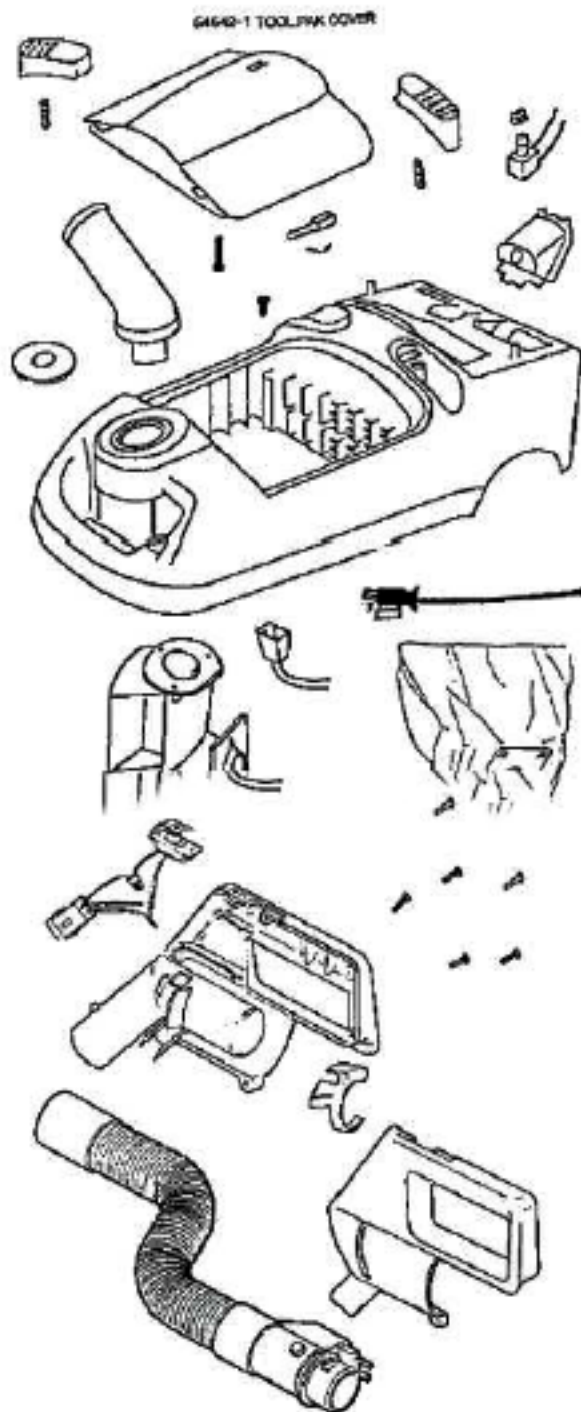


[Find Your Eureka Vacuum Cleaner Parts - Select From 855 Models](#)

----- Manual continues below part list -----

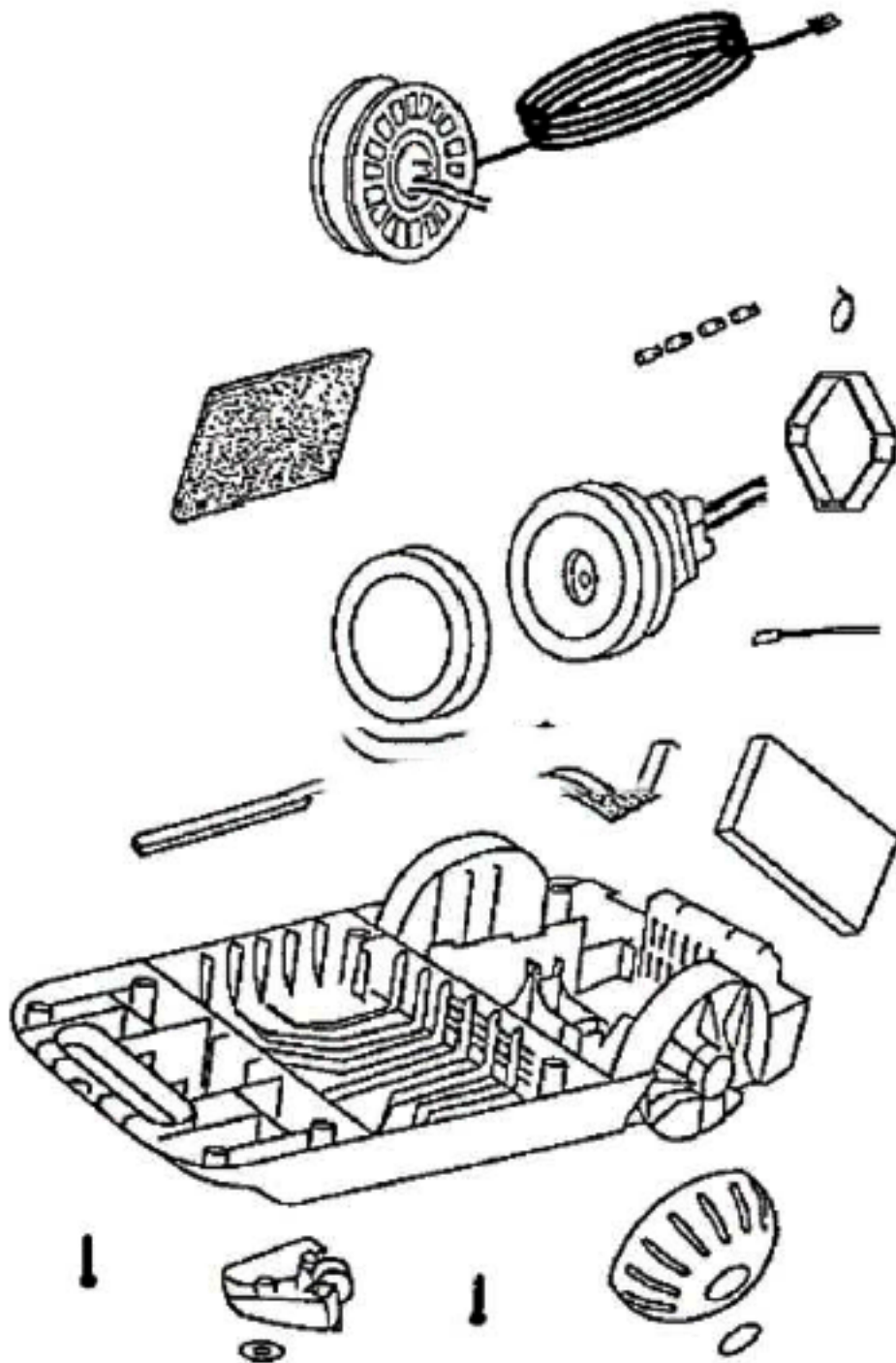
## Available Replacement Parts for Eureka 6875A

<a href="#">E-37657</a>	FILTER, CANISTER, 1PK
<a href="#">155506</a>	MOTOR

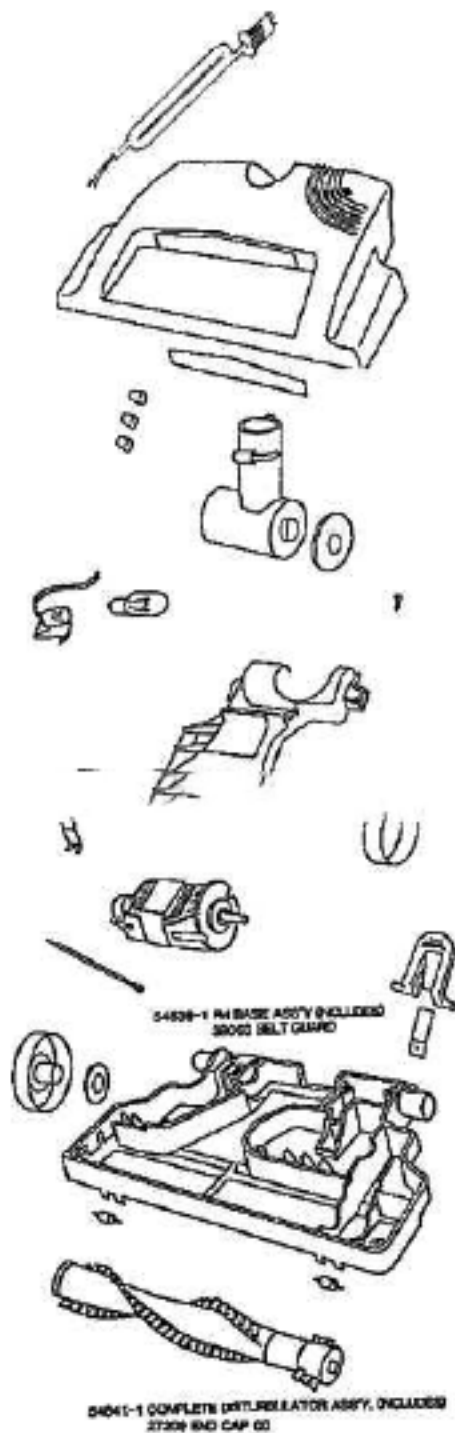


6466-1 HOSE ASSEMBLY COMPLETE

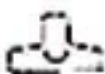
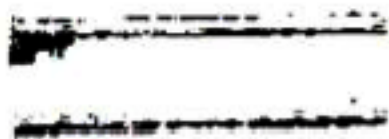
Ref #	Part	Description	Comments	Qty
1	14905-2	PLATE - HOSE		
2	26730-8	CONNECTOR & WIRE ASSEMBLY		
3	27367-1	GUIDE - CORD		
4	27380A-1	SEAL - SWIVEL HOSE		
5	36341-2	SWITCH - PUSH		
6	37761-1	BAG INDICATOR ASSEMBLY		
7	37789-9	COVER - BLEEDER		
8	38346	SWITCH & CONNECTOR ASSEMB		
9	38358-2	CORD & PLUG ASSY		
10	38368-1	CLIP - PLUG		
11	38386-3	BUTTON		
12	38387-2	BUTTON		
13	53238-1	SCREW PACKAGE		
14	53257-1	SCREWS - PACKAGE 10		
15	54009-12	HANDLE ASSY 2 WIRE (PACKA		
16	54544-1	HOSE ASSEMBLY - CARTONED		
17	54635-4	BAG COVER & GRAPHICS - PK		
18	54637-2	CONNECTOR ASSY - HOSE (CR		
19	54642-1	TOOL PAK COVER ASSEMBLY		
20	54643-1	HOSE ASSEMBLY - CARTONED		
21	55446	NUT - SWITCH		
22	55794	SPRING		
23	56750	CLIP - BAG INDICATOR		
24	57698	PAPER BAG - STYLE V FA		



Ref #	Part	Description	Comments	Qty
1	14656-7	CORD REEL ASSEMBLY		
2	26715A	GASKET - MOTOR MOUNTING		
3	27366-1	WHEEL - REAR		
4	37403-1	CASTER		
5	37657	FILTER - MOTOR		
6	37710-1	FILTER - EXHAUST		
7	37966	SOUND FOAM		
8	38363-1	WHEEL - REAR		
9	53141	TIE - CABLE		
10	53197-1	SCREW PACKAGE		
11	53214-2	WIRE SPLICE 5		
12	53238-8	SCREW PACKAGE		
13	54404	MOTOR ASSY - CTND		
14	55483	GASKET - MOTOR STACK		
15	56326-1	TUBE - WIRE		
16	56376	WASHER		
17	57720	THERMOSTAT		



Ref #	Part	Description	Comments	Qty
1	14940-1	PEDAL - FOOT		
2	27397-1	LENS - HOOD		
3	27398-1	AIR DUCT COVER ASSEMBLY		
4	37434-1	WHEEL - REAR		
5	37751-2	CORD & PLUG ASSEMBLY		
6	38083	GUARD - BELT		
7	38377	STRAP - MOTOR		
8	38379-1	HANDLE SOCKET ASSEMBLY		
9	38484-1	HEADLIGHT SOCKET ASSEMBLY		
10	48815	LAMP - HEADLIGHT		
11	53214-2	WIRE SPLICE 5		
12	53238-8	SCREW PACKAGE		
13	53984-1	WHEEL & AXLE PACKAGE - FR		
14	54343-1	MOTOR ASSEMBLY - PACKAGED		
15	54639-1	POWERHEAD HOOD/BASE KIT		
16	54641-1	DISTURBULATOR ASSY - CART		
17	56180	FELT WASHER		
18	57421-2	WIRE & TERMINAL ASSEMBLY		
19	57992	GASKET - FELT		
20	58065	BELT - STYLE AR		
21	58169	SPRING		



Ref #	Part	Description	Comments	Qty
1	27354-3	ELBOW		
2	36879-5	STRAIGHT WAND ASSEMBLY		
3	37738-2	UPPER WAND ASSEMBLY		
4	54355-3	TOOL - CREVICE		
5	54505-1	DUSTING BRUSH - PACKAGED		
6	54506-1	UPHOLSTERY NOZZLE ASSEMBL		
7	54533-4	FLOOR & WALL BRUSH - PACK		