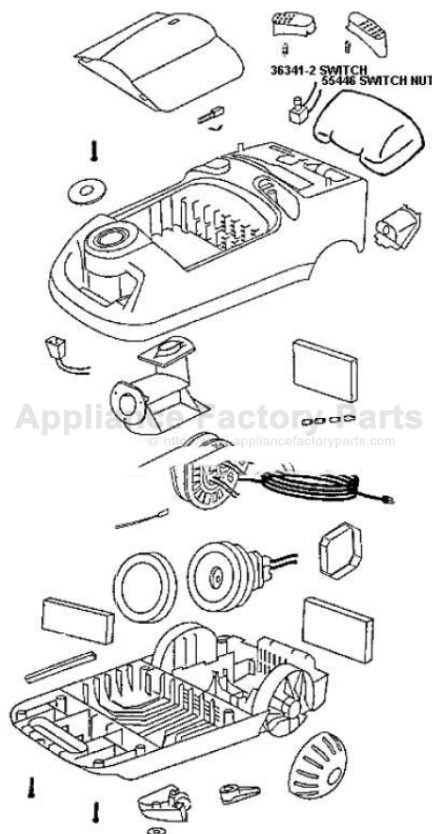


This Owner's Manual is provided and hosted by Appliance Factory Parts.



Eureka 6876A Owner's Manual

[Shop genuine replacement parts for Eureka 6876A](#)

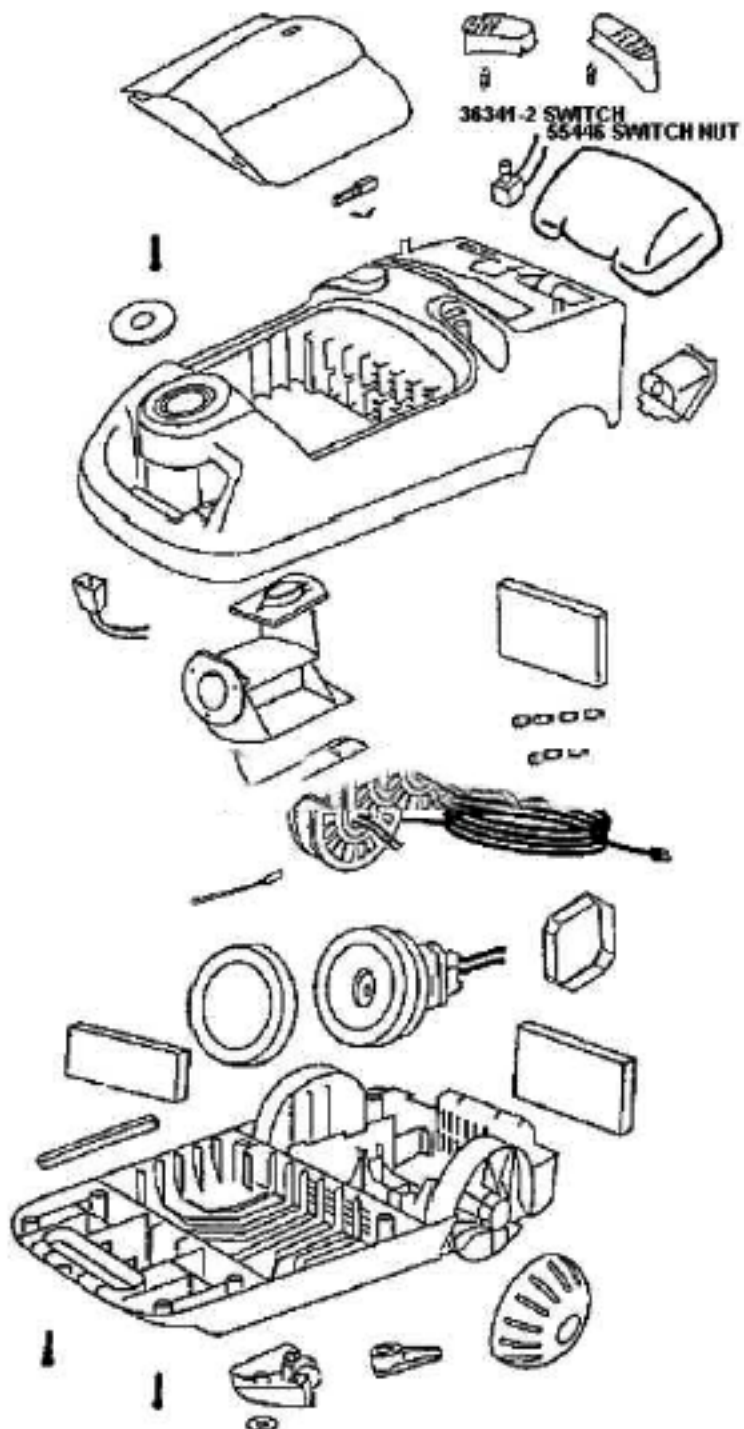


[Find Your Eureka Vacuum Cleaner Parts - Select From 855 Models](#)

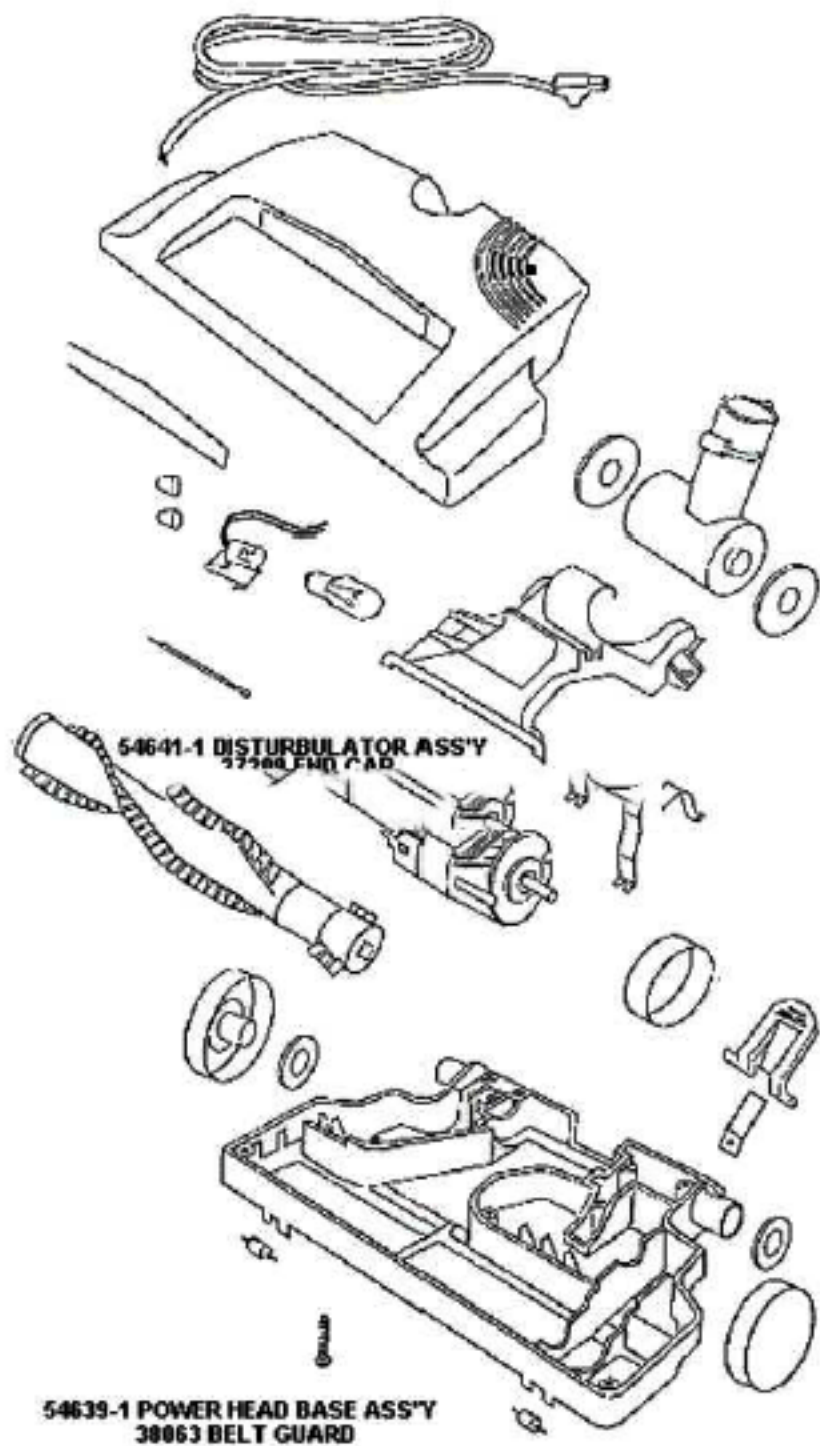
----- Manual continues below part list -----

Available Replacement Parts for Eureka 6876A

E-37657	FILTER, CANISTER, 1PK
155506	MOTOR

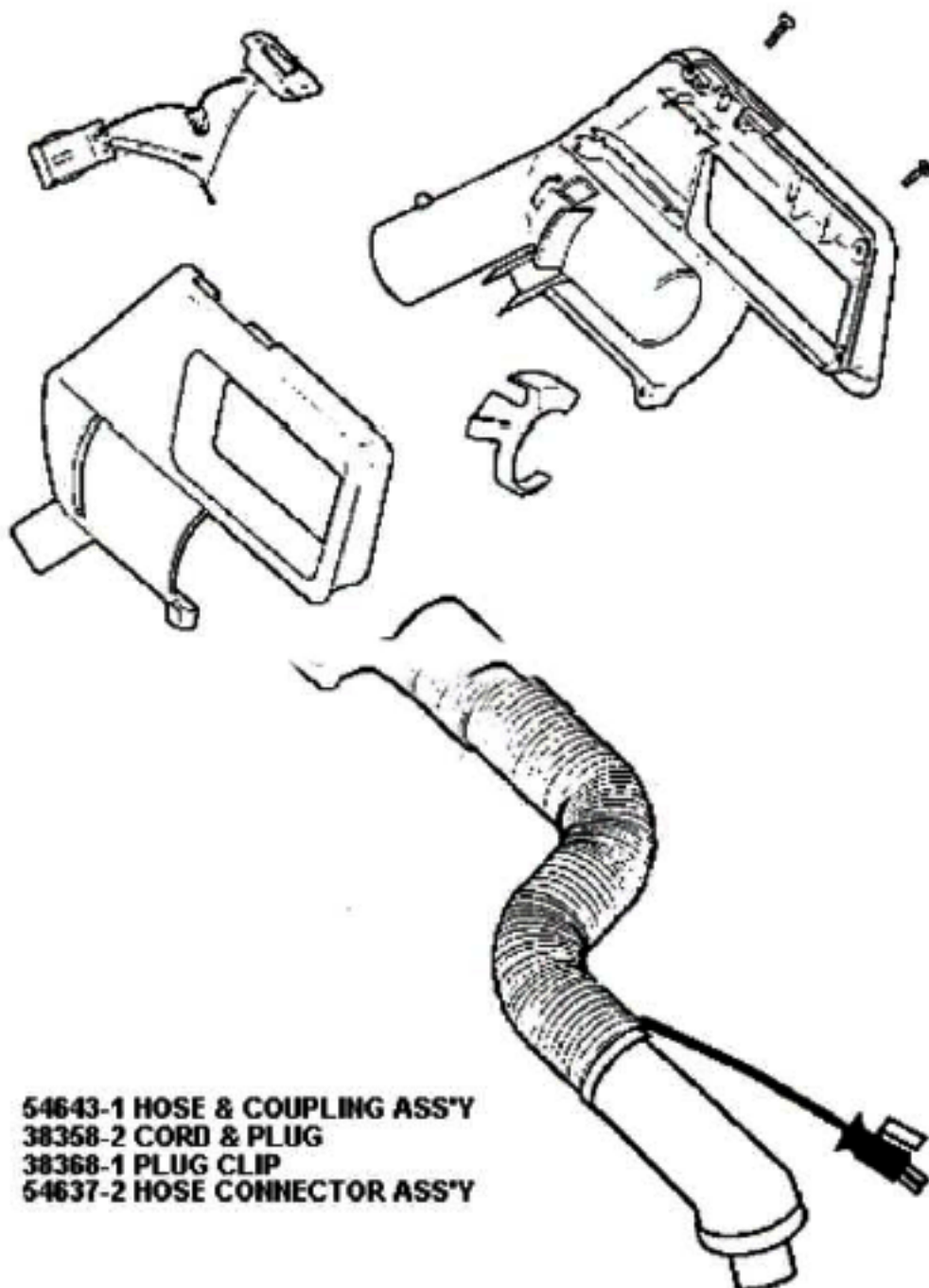


Ref #	Part	Description	Comments	Qty
1	14656-7	CORD REEL ASSEMBLY		
2	14905-2	PLATE - HOSE		
3	267 15A	GASKET - MOTOR MOUNTING		
4	26730-8	CONNECTOR & WIRE ASSEMBLY		
5	27367-1	GUIDE - CORD		
6	27380A-1	SEAL - SWIVEL HOSE		
7	36341-2	SWITCH - PUSH		
8	37403-1	CASTER		
9	37657	FILTER - MOTOR		
10	37710-1	FILTER - EXHAUST		
11	37761-1	BAG INDICATOR ASSEMBLY		
12	37966	SOUND FOAM		
13	38376-1	WHEEL - REAR		
14	38386-3	BUTTON		
15	38387-2	BUTTON		
16	46713	TIE - CABLE (PURCHASED)		
17	53197-1	SCREW PACKAGE		
18	53214-2	WIRE SPLICE 5		
19	53238-1	SCREW PACKAGE		
20	53238-8	SCREW PACKAGE		
21	54551-1	MOTOR ASSY - CTND		
22	54635-6	BAG COVER & GRAPHICS - PK		
23	54642-1	TOOL PAK COVER ASSEMBLY		
24	55446	NUT - SWITCH		
25	55463	GASKET - MOTOR STACK		
26	55794	SPRING		
27	56146	THERMOSTAT		
28	56326-1	TUBE - WIRE		
29	56376	WASHER		
30	56750	CLIP - BAG INDICATOR		



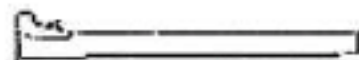
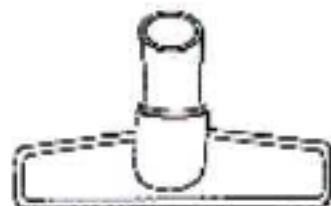
Ref #	Part	Description	Comments	Qty
1	14940-1	PEDAL - FOOT		
2	27397-1	LENS - HOOD		
3	27398-1	AIR DUCT COVER ASSEMBLY		
4	37434-1	WHEEL - REAR		
5	37751-2	CORD & PLUG ASSEMBLY		
6	38063	GUARD - BELT		
7	38379-1	HANDLE SOCKET ASSEMBLY		
8	38484-1	HEADLIGHT SOCKET ASSEMBLY		
9	48815	LAMP - HEADLIGHT		
10	53214-2	WIRE SPLICE 5		
11	53238-8	SCREW PACKAGE		
12	53984-1	WHEEL & AXLE PACKAGE - FR		
13	54343-1	MOTOR ASSEMBLY - PACKAGED		
14	54639-1	POWERHEAD HOOD/BASE KIT		
15	54641-1	DISTURBULATOR ASSY - CART		
16	56180	FELT WASHER		
17	57421-2	WIRE & TERMINAL ASSEMBLY		
18	57992	GASKET - FELT		
19	58065	BELT - STYLE AR		
20	58169	SPRING		

54544-1 HOSE ASSY - COMPLETE



- 54643-1 HOSE & COUPLING ASS'Y**
- 38358-2 CORD & PLUG**
- 38368-1 PLUG CLIP**
- 54637-2 HOSE CONNECTOR ASS'Y**

Ref #	Part	Description	Comments	Qty
1	37789-9	COVER - BLEEDER		
2	38346	SWITCH & CONNECTOR ASSEMB		
3	38358-2	CORD & PLUG ASSY		
4	38358-1	CLIP - PLUG		
5	53257-1	SCREWS - PACKAGE 10		
6	54009-12	HANDLE ASSY 2 WIRE (PACKA		
7	54544-1	HOSE ASSEMBLY - CARTONED		
8	54637-2	CONNECTOR ASSY - HOSE (CR		
9	54643-1	HOSE ASSEMBLY - CARTONED		



Ref #	Part	Description	Comments	Qty
1	36879-5	STRAIGHT WAND ASSEMBLY		
2	37738-2	UPPER WAND ASSEMBLY		
3	54355-3	TOOL - CREVICE		
4	54505-1	DUSTING BRUSH - PACKAGED		
5	54506-1	UPHOLSTERY NOZZLE ASSEMBL		
6	54533-4	FLOOR & WALL BRUSH - PACK		
7	57698	PAPER BAG - STYLE V FA		