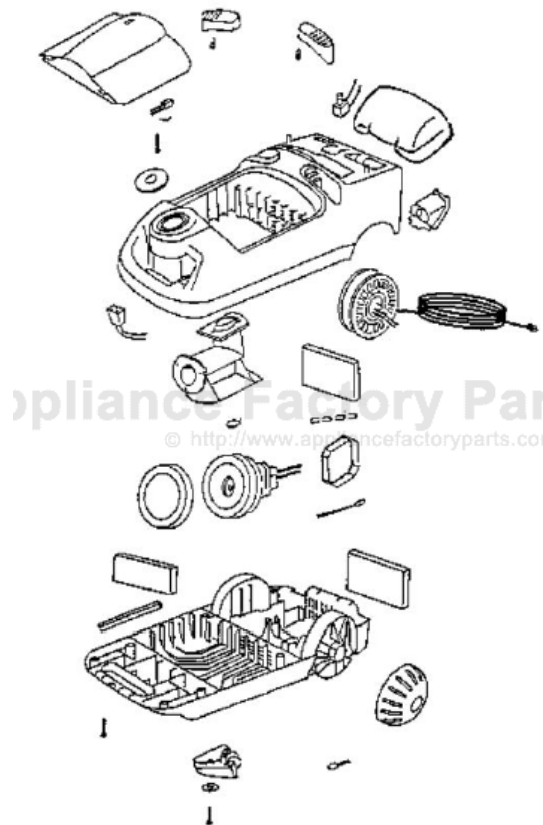


This Owner's Manual is provided and hosted by [Appliance Factory Parts](#).



Eureka 6892A Owner's Manual

[Shop genuine replacement parts for Eureka 6892A](#)

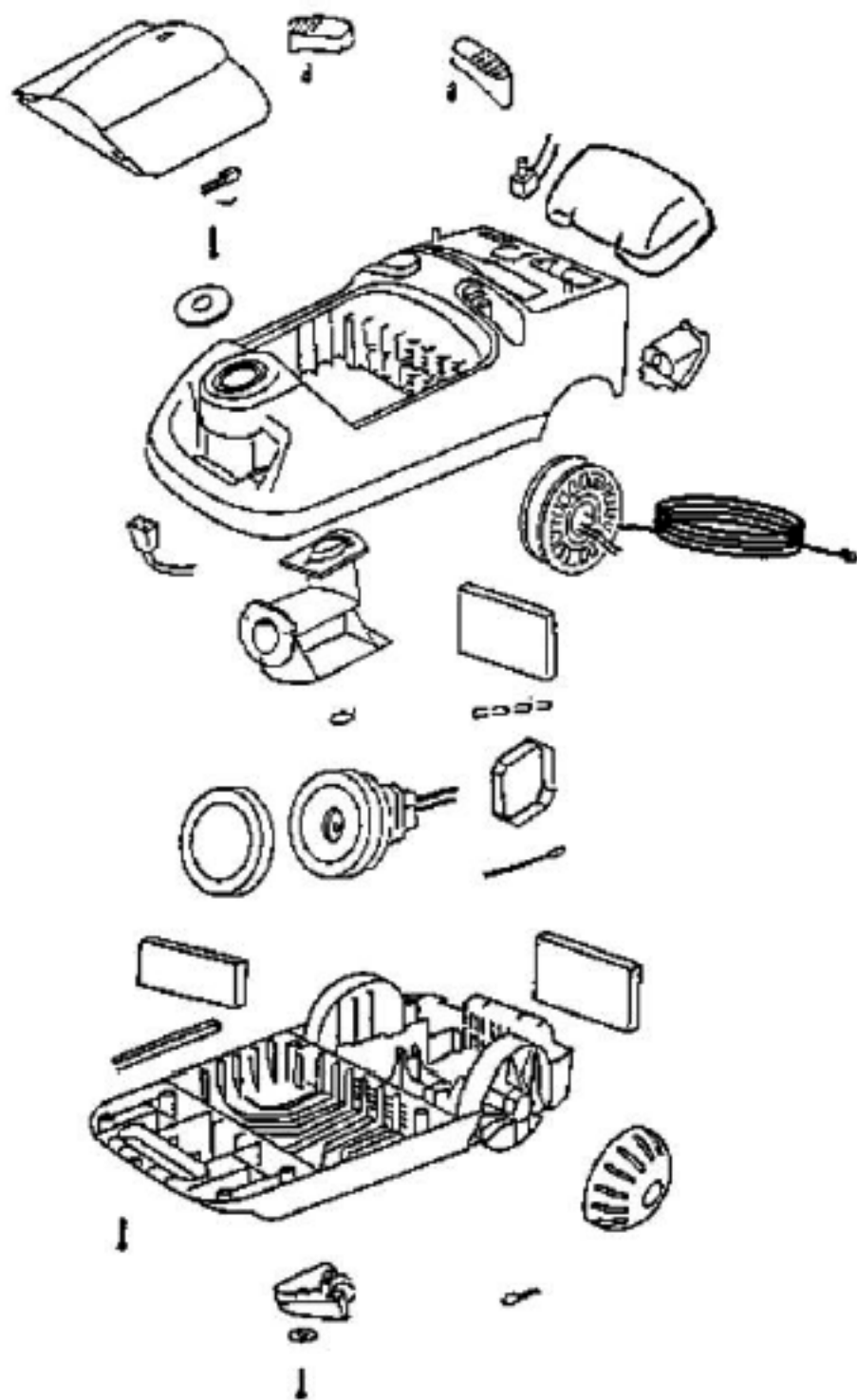


[Find Your Eureka Vacuum Cleaner Parts - Select From 855 Models](#)

----- Manual continues below part list -----

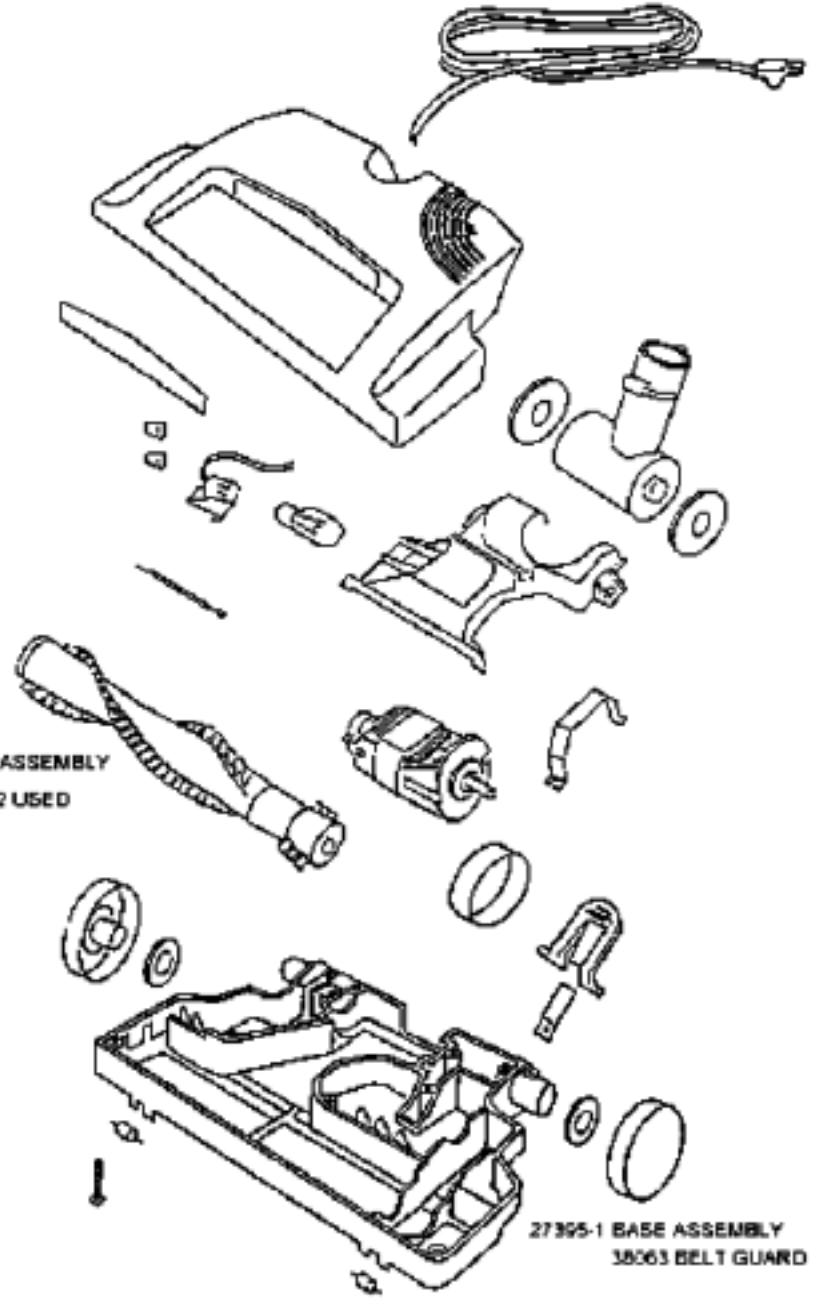
Available Replacement Parts for Eureka 6892A

ER-1475	VACUUM BAG AFTERMARKET EUREKA 3 PACK
E-37657	FILTER, CANISTER, 1PK
ER-2017	BRUSH ROLLER ROLL 54325-1
155506	MOTOR



PARTS1 - 6892A

Ref #	Part	Description	Comments	Qty
1	14656-7	CORD REEL ASSEMBLY		
2	26630-1	SPEED CONTROL ASSEMBLY		
3	26730-9	CONNECTOR & WIRE ASSEMBLY		
4	27367-1	GUIDE - CORD		
5	27380A-1	HOSE SEAL-SWIVEL		
6	28032	GASKET - MOTOR MOUNTING		
7	36341-2	SWITCH - PUSH		
8	37403-1	CASTER		
9	37657	FILTER - MOTOR		
10	37710-1	FILTER - EXHAUST		
11	37761-1	BAG INDICATOR ASSEMBLY		
12	37966	Obsolete no substitutes		
13	38376-1	WHEEL - REAR		
14	38387-7	BUTTON		
15	46713-1	TIE - CABLE (PURCHASED)		
16	53197-1	SCREW PACKAGE		
17	53238-1	SCREW PACKAGE		
18	53238-8	SCREW PACKAGE		
19	54635-6	BAG COVER & GRAPHICS - PK		
20	55463	GASKET - MOTOR STACK		
21	55794	SPRING		
22	56146	THERMOSTAT		
23	56326-1	WIRE TUBE		
24	56376	WASHER		
25	56750-1	CLIP - BAG INDICATOR		
26	58764	TOOL PAK COVER ASSEMBLY		
27	60143	MOTOR ASSY - CTND		
28	60192-1	WIRE SPLICE 5		

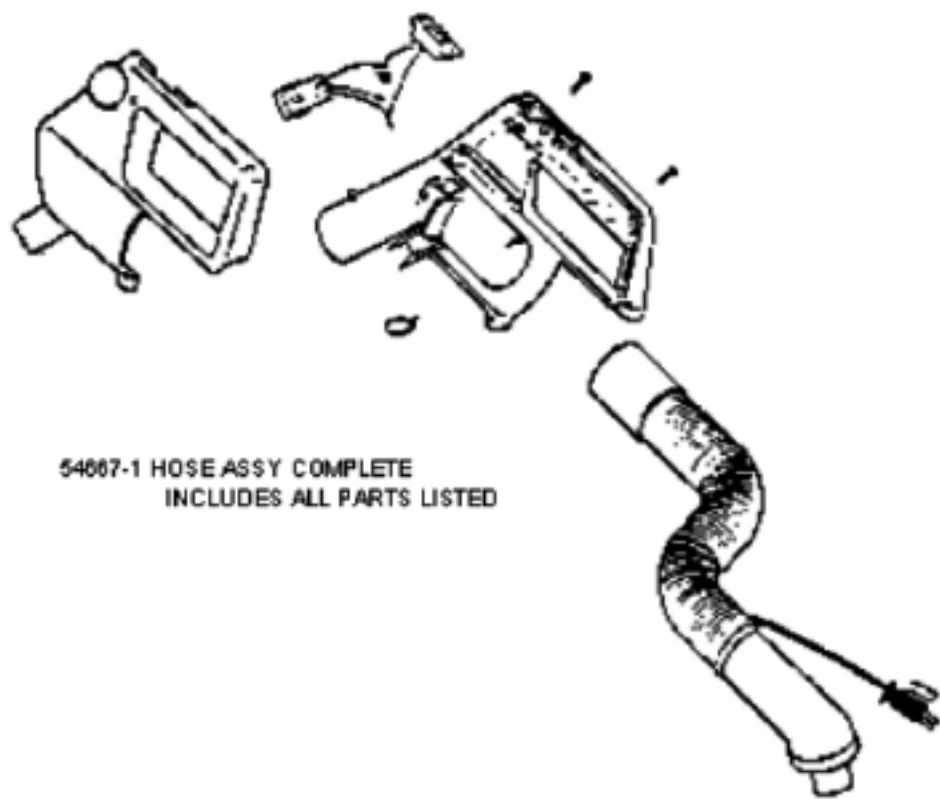


60279-1 DISTURBULATOR ASSEMBLY
27759 END CAP - 2 USED

27395-1 BASE ASSEMBLY
38063 BELT GUARD

PARTS2 - 6892A

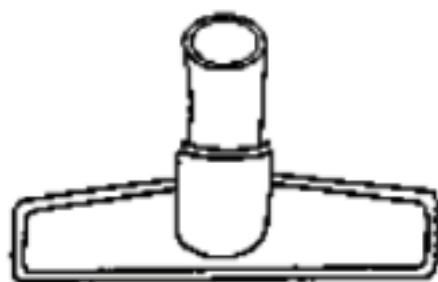
Ref #	Part	Description	Comments	Qty
1	14940-1	PEDAL - FOOT		
2	27395-1	POWERHEAD HOOD/BASE KIT		
3	27397-1	LENS - HOOD		
4	27398-1	AIR DUCT COVER ASSEMBLY		
5	27759	CAP - DISTURBULATOR		
6	37434-2	WHEEL - REAR		
7	37751-3	CORD & PLUG ASSY(short) (NLA)		
8	38063	GUARD - BELT		
9	38377	STRAP - MOTOR		
10	38379-1	HANDLE SOCKET ASSEMBLY		
11	38484-1	HEADLIGHT SOCKET ASSEMBLY		
12	53238-8	SCREW PACKAGE		
13	53984-1	WHEEL & AXLE PACKAGE - FR		
14	54343-1	PH MOTOR ASSY (155506)		
15	54672-4	POWERHEAD HOOD/BASE KIT		
16	56180	FELT WASHER		
17	57421-2	WIRE & TERM ASY		
18	57992	GASKET - FELT		
19	58065	BELT PACKAGE ASSY - STYLE		
20	58169	SPRING		
21	59045	HEADLIGHT		
22	60192-1	WIRE SPLICE 5		
23	60279-1	DISTURBULATOR ASSY - CTND		



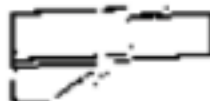
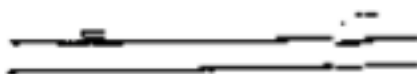
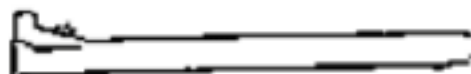
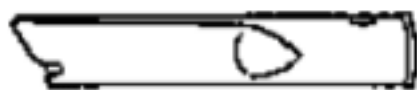
54007-1 HOSE ASSY COMPLETE
INCLUDES ALL PARTS LISTED

PARTS3 - 6892A

Ref #	Part	Description	Comments	Qty
1	27494-1	SWITCH & WIRE ASSEMBLY		
	37738-2	UPPER WAND ASSEMBLY		
3	38358-1	CORD & PLUG ASSY		
4	38368-1	CLIP - PLUG		
	39040	STRAIGHT WAND ASSEMBLY		
	39041	COUPLING ASSY - EASY CHAN		
7	46713-1	TIE - CABLE (PURCHASED)		
8	53257-1	SCREWS - PACKAGE 10		
9	54637-2	CONNECTOR ASSY - HOSE (CR		
10	54640-1	HOSE ASSEMBLY - CARTONED		
11	54656-1	No longer available - no (NLA)		
12	54667-1	HOSE ASSY - CTND		
	54780	TOOL - CREVICE		
	54785	FLOOR & WALL BRUSH - PACK		
	54787	DUSTING BRUSH - PACKAGED		
	57698	PAPER BAG PKG ASSY (STYLE		



58074D OWNERS GUIDE



ACCESSORIES - 6892A

Ref #	Part	Description	Comments	Qty
1	37738-2	UPPER WAND ASSEMBLY		
2	39040	STRAIGHT WAND ASSEMBLY		
3	39041	COUPLING ASSY - EASY CHAN		
4	54780	TOOL - CREVICE		
5	54782	UPHOLSTERY NOZZLE ASSEMBL		
6	54785	FLOOR & WALL BRUSH - PACK		
7	54787	DUSTING BRUSH - PACKAGED		
8	57698	PAPER BAG PKG ASSY (STYLE		