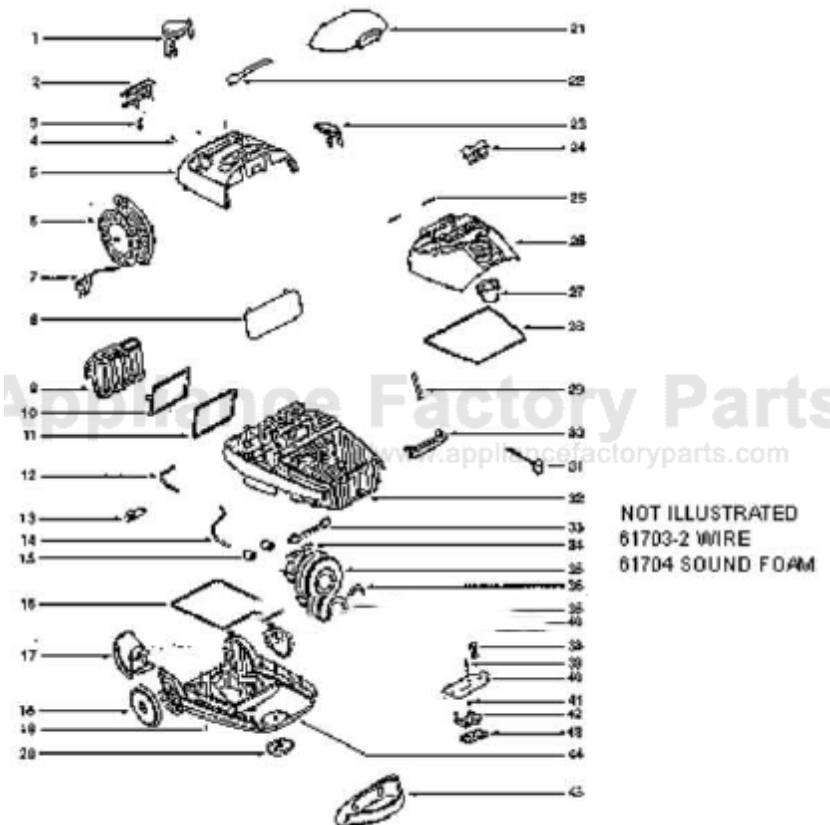


This Owner's Manual is provided and hosted by [Appliance Factory Parts](http://Appliance Factory Parts).



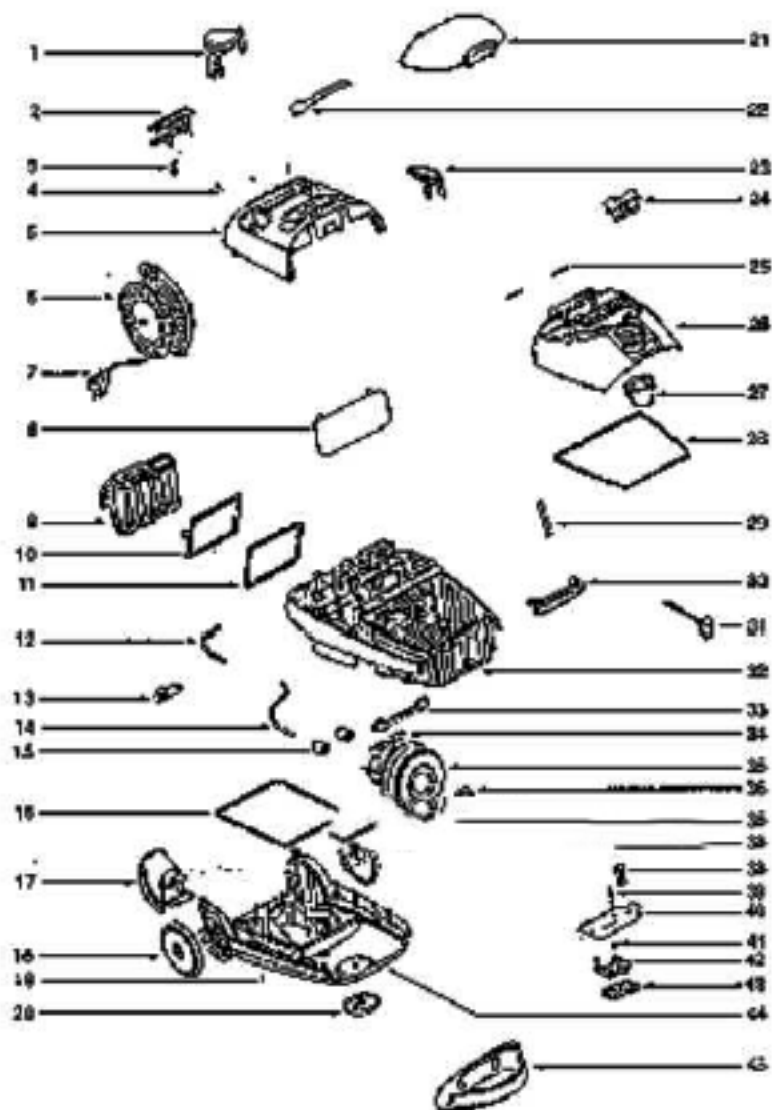
# Eureka 6983A Owner's Manual

[Shop genuine replacement parts for Eureka 6983A](#)



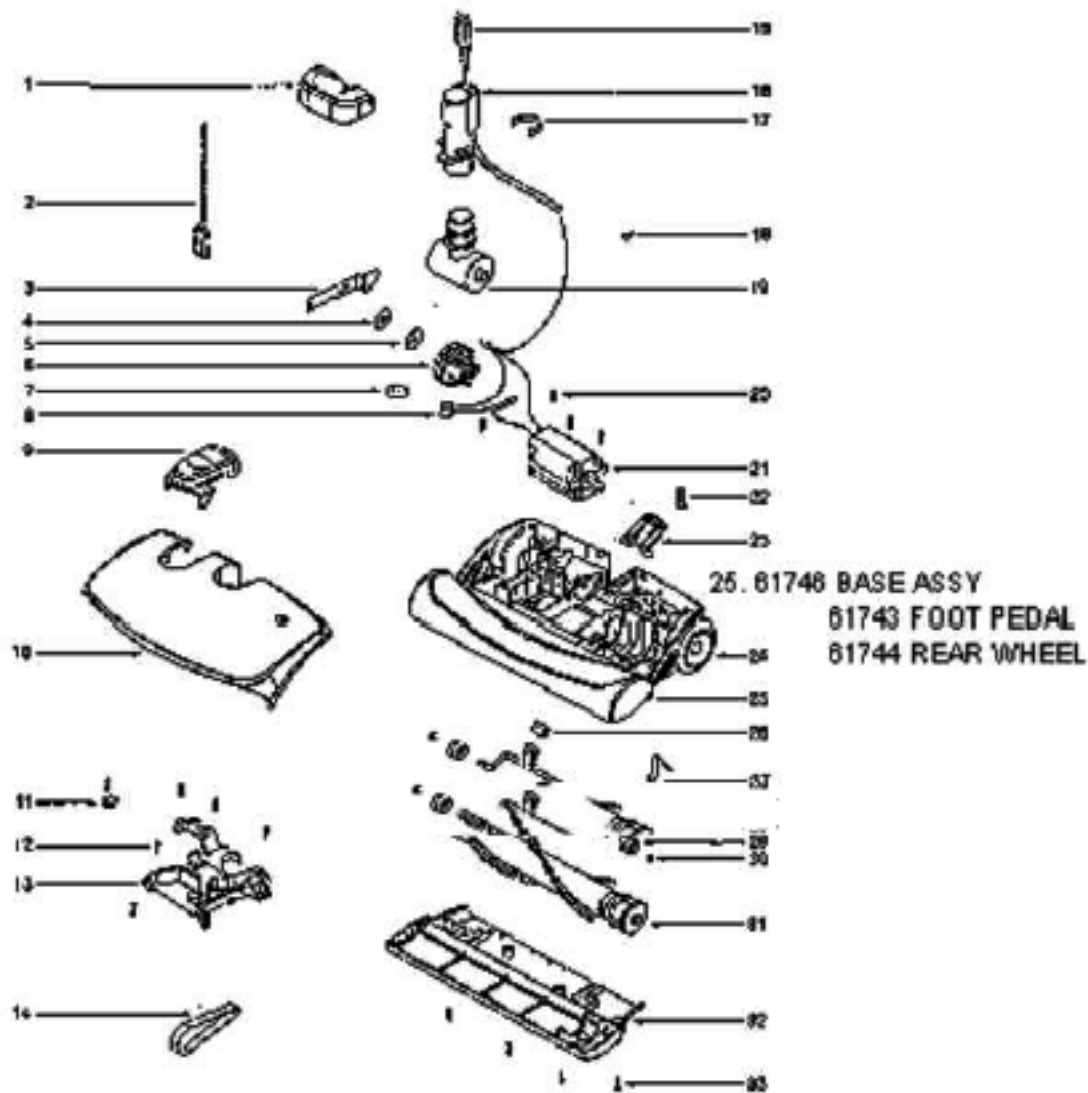
[Find Your Eureka Vacuum Cleaner Parts - Select From 855 Models](#)

----- Manual continues below -----

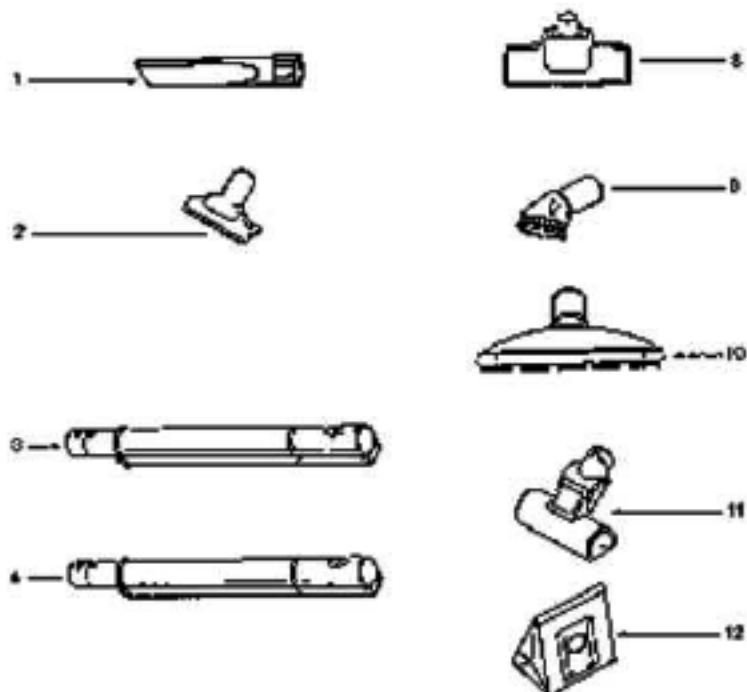


NOT ILLUSTRATED  
 61703-2 WIRE  
 61704 SOUND FOAM

Ref #	Part	Description	Comments	Qty
1	54886-4	LID - BAG COVER		
2	54888-3	CORD REWIND BUTTON		
3	54889-3	SWITCH BUTTON		
4	54890	BAG SUPPORT (ORANGE)		
5	54892	BAG SUPPORT SPRING		
6	54893	BAG INDICATOR		
7	54894	SHAFT		
8	54895-1	REAR WHEEL		
9	54914	HOSE 185MM		
10	54939-1	HOSE 170MM		
11	54944-4	DISPLAY		
12	54973	SPRING		
13	54985	CORD SET		
14	60286A	HEPA FILTER - STYLE HF1		
15	60476	FILTER FLAP (DARK GREY)		
16	60541	MOTOR FILTER		
17	60578	SEAL - EXHAUST FILTER		
18	60605	COVER SEALING GASKET .750		
20	60608	FLAP SEAL		
21	60632	FLAP PLATE		
22	60634-1	SUPPORT SEAL RING		
23	60635	INSULATING WASHER		
24	60636-1	REAR CATCH LEVER		
25	60637	SPRING CATCH LEVER		
26	60638-1	SLEEVE		
27	60647-1	SEALING RING		
28	60648-1	CORD GUIDE		
29	60650-1	MOTOR ASSEMBLY - CARTONED		
30	60651-1	CATCH LEVER (DARK GREY)		
31	60652-1	HANDLE		
31	60606-1	POWER OUTLET		
32	60653	CUSHION		
33	61693	CORD REEL W/CORD		
34	61694	MOTOR BLOCK		
35	61695	FRONT CASTER		
36	61697-1	SCREW PACKAGE		
37	61697-2	SCREW PACKAGE		
38	61698	THERMOSTAT		
39	61703-2	WIRE		
40	61704	SOUND FOAM		
41	61706-2	CIRCUIT BOARD - PKGD		
42	61708-2	TOP COVER - PKGD		
43	61709	UPPER SHELL		
44	61710	LOWER SHELL		
45	61712-2	COVER - PKGD		
	60606	POWER OUTLET		



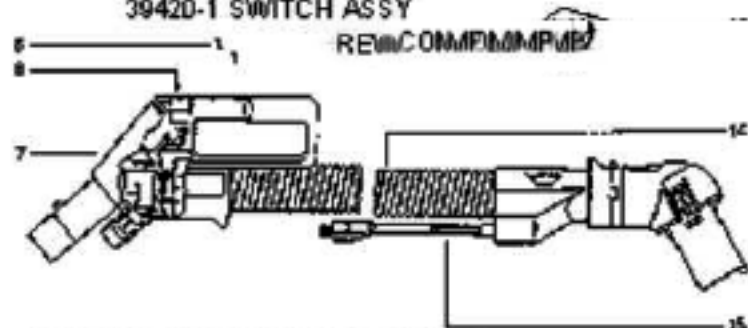
Ref #	Part	Description	Comments	Qty
1	52201B	BELT PKG ASSY (PH)		
2	60192-1	WIRE SPLICE 5		
3	61692	LIGHT BULB		
4	61699	BRUSH ROLL ASSY - PKGD		
5	61721	QUICK CONNECT PEDAL		
6	61722	CONNECTOR & WIRE ASSEMBLY		
7	61723	PIVOT ARM		
8	61724	CAM DISK		
9	61725	CAM LOCK ASSEMBLY		
10	61726	HEIGHT ADJUSTMENT KNOB		
11	61727	LIGHT SOCKET		
12	61728	PEDAL ASSEMBLY		
13	61730	HOOD ASSEMBLY - PACKAGED		
14	61731	CLIP		
15	61733	SCREW PACKAGE		
16	61734	AIR DUCT COVER ASSY		
17	61735	POWER CORD		
18	61736	COUPLING		
19	61737	C-CLAMP		
20	61738	HANDLE SOCKET ASSY		
21	61740	MOTOR ASSEMBLY - CARTONED		
22	61742	SPRING PACKAGE		
23	61743	FOOT PEDAL		
24	61744	REAR WHEEL		
25	61746	BASE ASSEMBLY - PACKAGED		
26	61747	CAM BEARING		
27	61748	SPRING		
28	61749	FRONT AXLE		
29	61750	FRONT WHEEL		
30	61752	E-RING PACKAGE		
31	61753	SOLE PLATE ASSY		



7. 60852-2 HOSE HANDLE ASSY COMPLETE

53257-1 SCREW

39420-1 SWITCH ASSY



14. 60782-3 HOSEB ASSY COMPLETE

Ref #	Part	Description	Comments	Qty
1	27730-3	HOSE CONNECTOR CORD ASSEM		
2	39134-6	DELUXE FLOOR NOZZLE ASSEM		
3	39420-1	SWITCH & CONNECTOR ASSEMB		
4	39422-1	DIRECT CONNECT WAND ASSEM		
5	53257-1	SCREWS - PACKAGE 10		
6	54903	DUSTING BRUSH W/SWIVEL NE		
7	54904	UPHOLSTERY NOZZLE		
8	54905	CREVICE TOOL - 8"		
9	59949	TURBO NOZZLE ASSY (MODEL		
10	60284A	PAPER BAG - STYLE EX		
11	60782-3	HOSE ASSY - CTND		
12	60816	FLOOR & WALL BRUSH ASSEMB		
13	60852-2	HANDLE ASSEMBLY - PACKAGE		
14	71428	OWNER'S GUIDE		