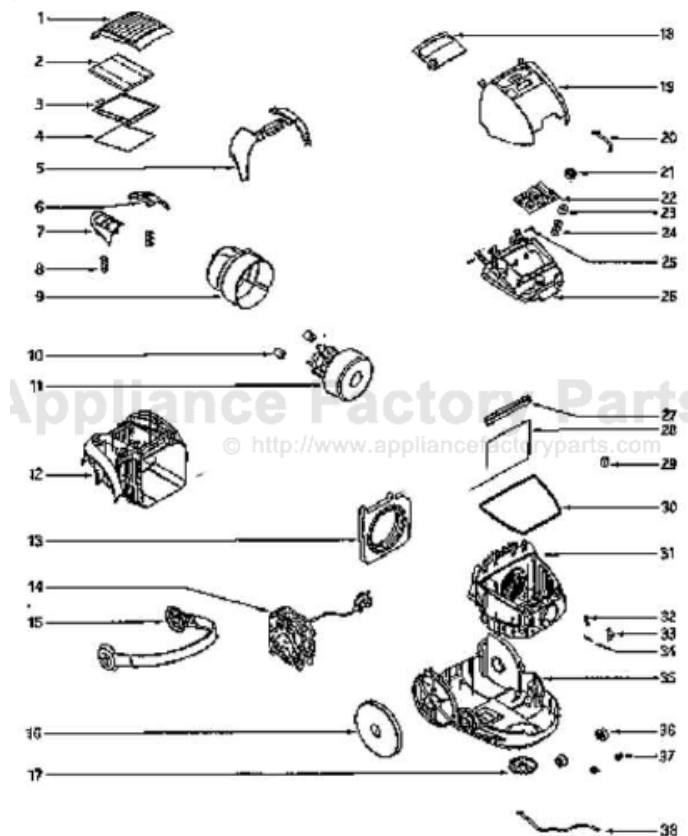


This Owner's Manual is provided and hosted by [Appliance Factory Parts](http://www.appliancefactoryparts.com).



# Eureka 6997A Owner's Manual

[Shop genuine replacement parts for Eureka 6997A](#)

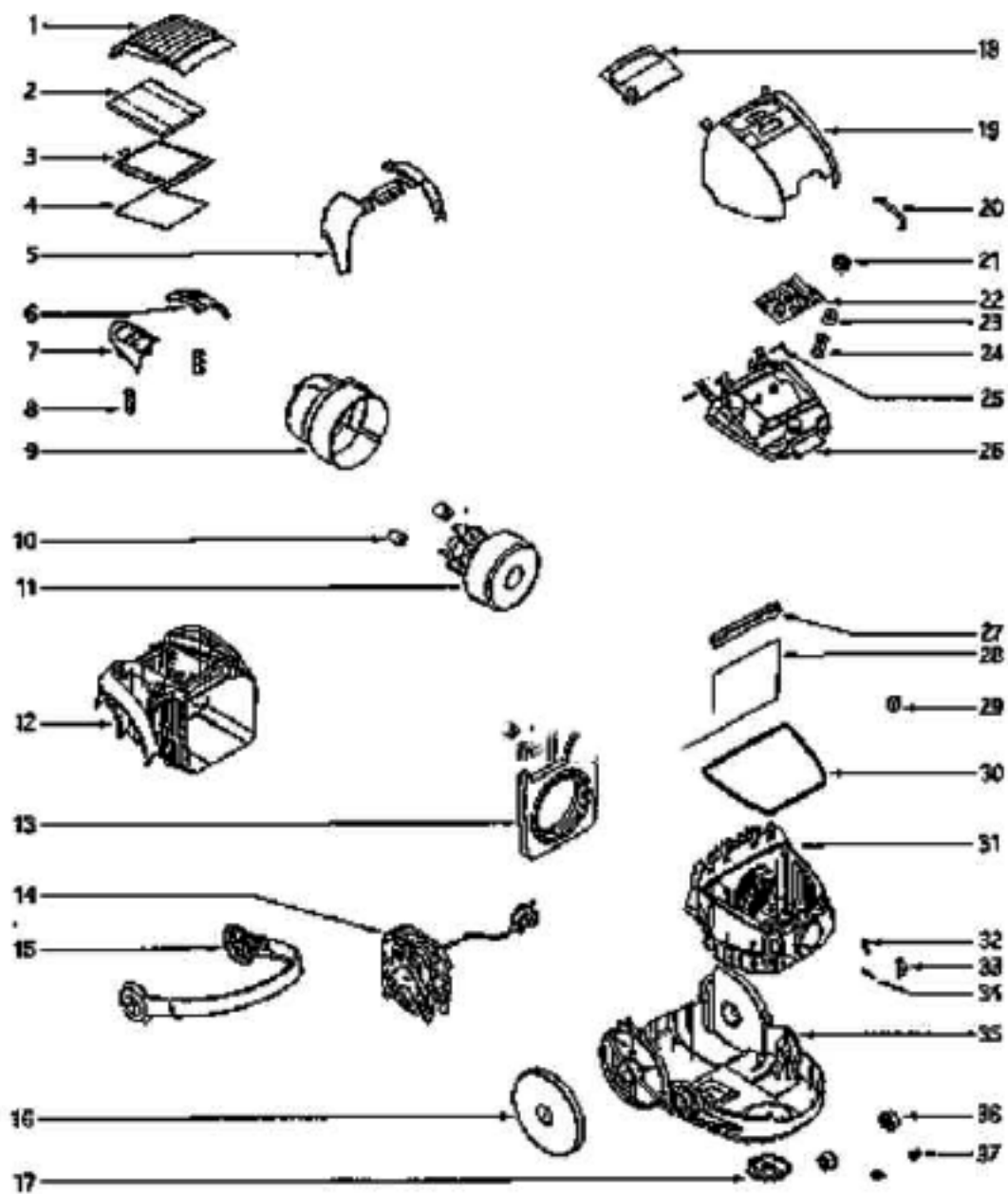


[Find Your Eureka Vacuum Cleaner Parts - Select From 855 Models](#)

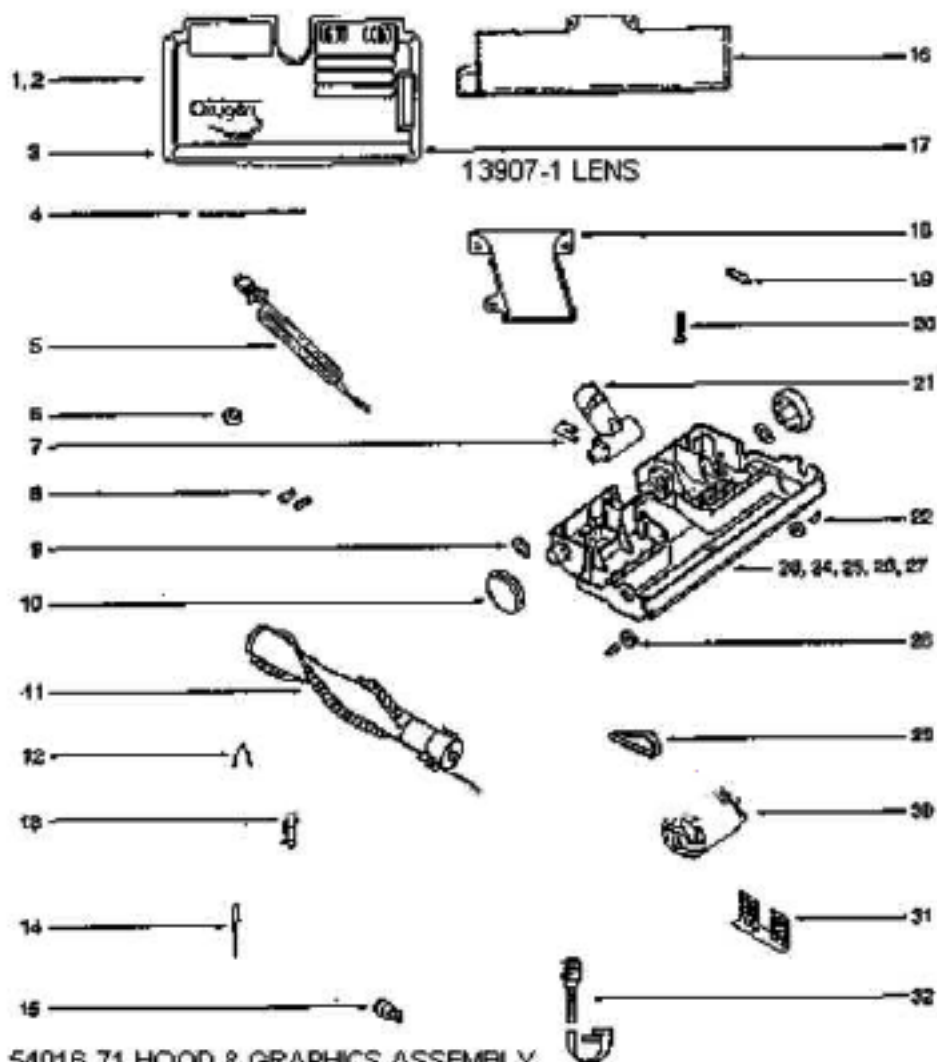
----- Manual continues below part list -----

## Available Replacement Parts for Eureka 6997A

<a href="#">EXR-14450A</a>	Vacuum Bag 5 pack Style BB Aftermarket
<a href="#">155506</a>	MOTOR



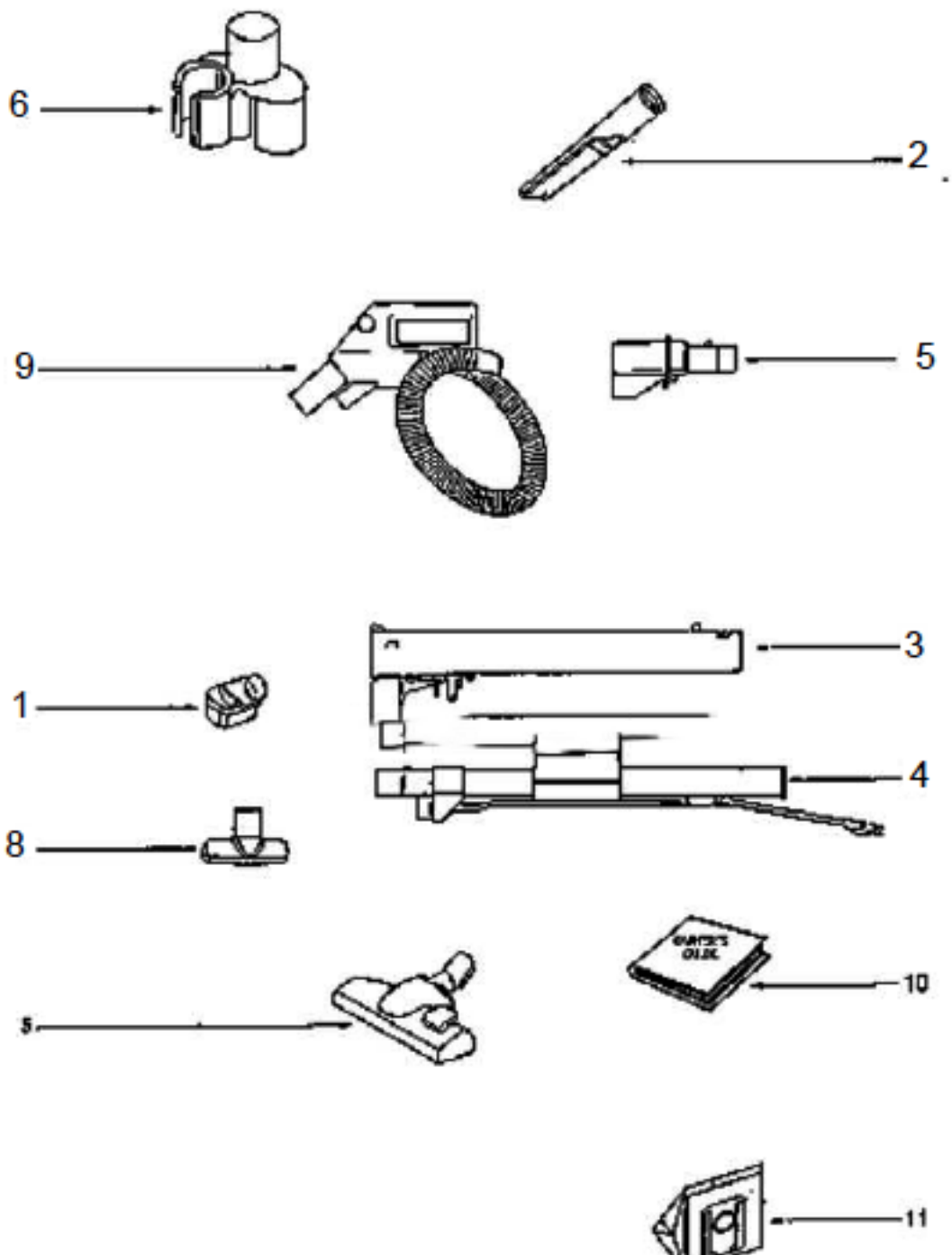
Ref #	Part	Description	Comments	Qty
1	60285A	HEPA FILTER PACKAGE		
2	61262	FINAL FILTER		
3	61263	MOTOR FILTER		
4	61369-1	MOTOR ASSEMBLY - CARTONED		
5	61369-1	FILTER COVER		
6	61370-1	BODY		
7	61373	HANDLE		
8	61374	CORD REEL		
9	61375-2	OUTER LID - PKGD		
10	61379-2	PANEL		
11	61390-2	MIDDLE COVER - PKGD		
12	61395	SEALING		
13	61396	MOTOR HOOD		
14	61397-1	REAR CAP		
15	61398	MOTOR SEAL		
16	61399-1	INNER LID		
17	61390-2	SPEED REGULATOR - CTND		
18	61392	FILTER HOLDER		
19	61393	COVER SEALING		
20	61394	PIPE		
21	61395	REAR WHEEL		
22	61396	FRONT WHEEL		
23	61397	RUBBER CUSHION		
24	61400-2	SWITCH PEDAL - PKGD		
25	61401-2	CORD REEL PEDAL - PKGD		
26	61403	SPRING - PKGD		
27	61404	VALVE COVER		
28	61405	PISTON		
29	61407	SPRING - PKGD		
30	61409	SHAFT - PKGD		
31	61410-1	LOWER SHELL WITH WHEELS		
32	61411	HOLDER		
33	61412	TUBE		
34	61413	CATCH		
35	61415	FLAP SPRING - PKGD		
36	61416	BUSHING		
37	61419	LOCK - PKGD		
38	61470	HOSE (TUBE)		



1. 54016-71 HOOD & GRAPHICS ASSEMBLY  
 26469-1 BELT WINDOW  
 37433-3 FURNITURE GUARD  
 55971 FELT GASKET

23. 54340-1 BASE ASSEMBLY  
 56489 FONT AXLE  
 55970 FELT GASKET  
 55968 FELT GASKET  
 55971 FELT GASKET

Ref#	Part	Description	Comments	Qty
1	13907-1	LENS		
2	26469-1	WINDOW - BELT		
3	36995	BELT - DRIVE		
4	37433-3	GUARD - FURNITURE		
5	37753-3	CORD & PLUG ASSEMBLY		
6	37785-8	WHEEL ASSEMBLY		
7	38063	GUARD - BELT		
8	38156	STRAP - MOTOR		
9	38177	SHIELD - MOTOR		
10	38259	HEADLAMP SOCKET ASSEMBLY		
11	40009A	LAMP - HEADLIGHT		
12	53190-1	BUSHING - STRAIN RELIEF-P		
13	53238-8	SCREW PACKAGE		
14	53411-1	DISTURBULATOR ASSY - CRTN		
15	54016-71	POWERHEAD HOOD ASSY - PAC		
16	54340-1	KIT - POWER HEAD BASE ASS		
17	54343-1	MOTOR ASSEMBLY - PACKAGED		
18	55968	GASKET - FELT		
19	55970	GASKET - FELT		
20	55971	GASKET - FELT		
21	55974	INSERT - LATCH		
22	55979	SPRING STRAP		
23	55980-1	STRAP		
24	56180	FELT WASHER		
25	56232-1	DISTURBULATOR COVER ASSEM		
26	56489	AXLE		
27	56824	WHEEL & SLEEVE ASSEMBLY		
28	56830-3	HANDLE SOCKET ASSEMBLY		
29	57421-1	WIRE & TERMINAL ASSEMBLY		
30	57710-1	AIR DUCT COVER ASSEMBLY		
31	60192-1	WIRE SPLICE 5		



Ref #	Part	Description	Comments	Qty
1	22713-9	UPHOLSTERY NOZZLE ASSEMBL		
2	26708-119N	TOOL - CREVICE		
3	37738-5	UPPER WAND ASSEMBLY		
4	39040A-2	STRAIGHT WAND ASSEMBLY		
5	39041	COUPLING ASSY - EASY CHAN		
6	54910	CLIP & TOOL		
7	60290-1	DUSTING BRUSH - PACKAGED		
8	60816	FLOOR & WALL BRUSH ASSEMB		
9	61054-1	SWIVEL HOSE ASSY - CARTON		
10	61230	PAPER BAG PKG - STYLE OX		