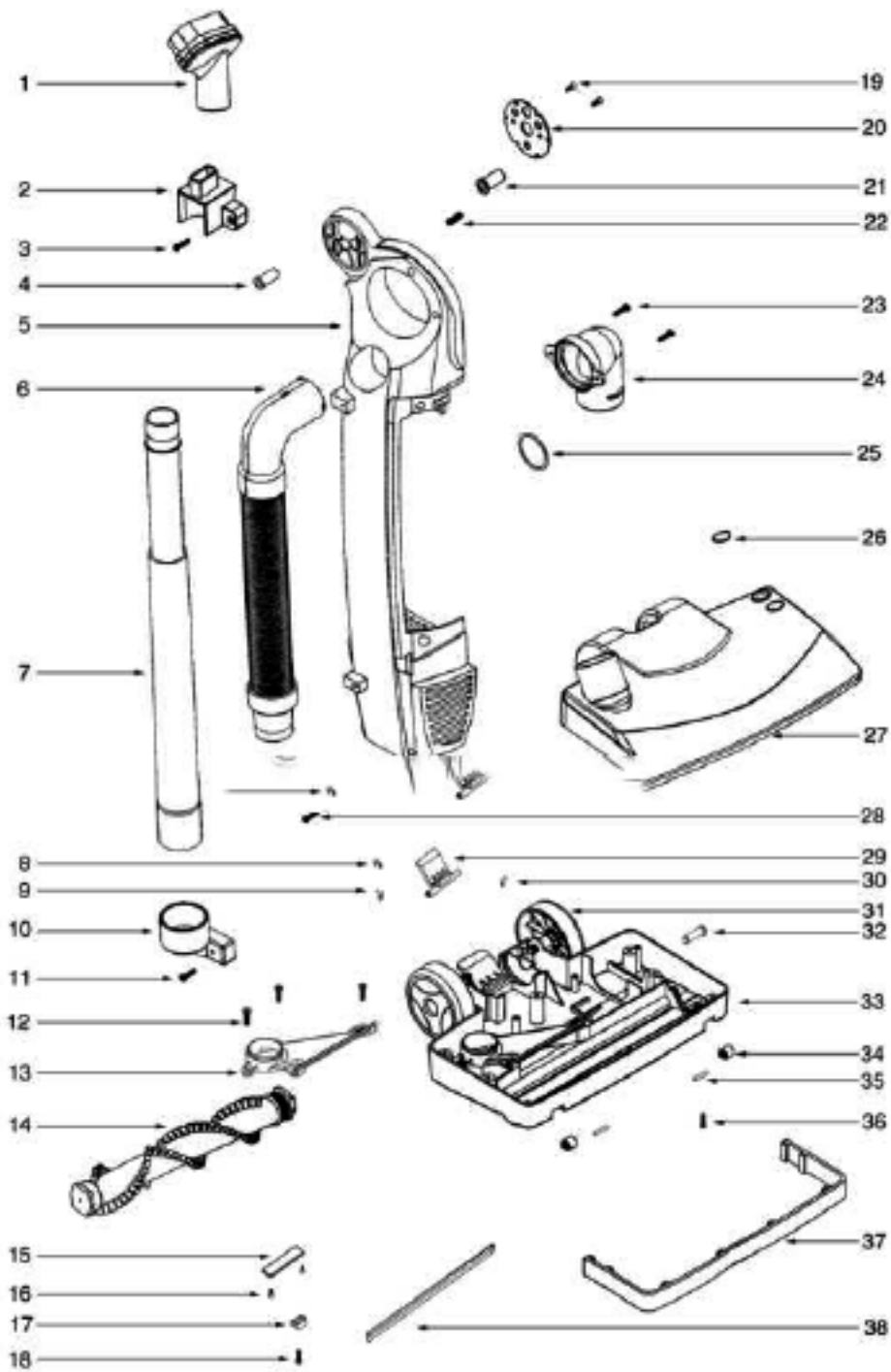
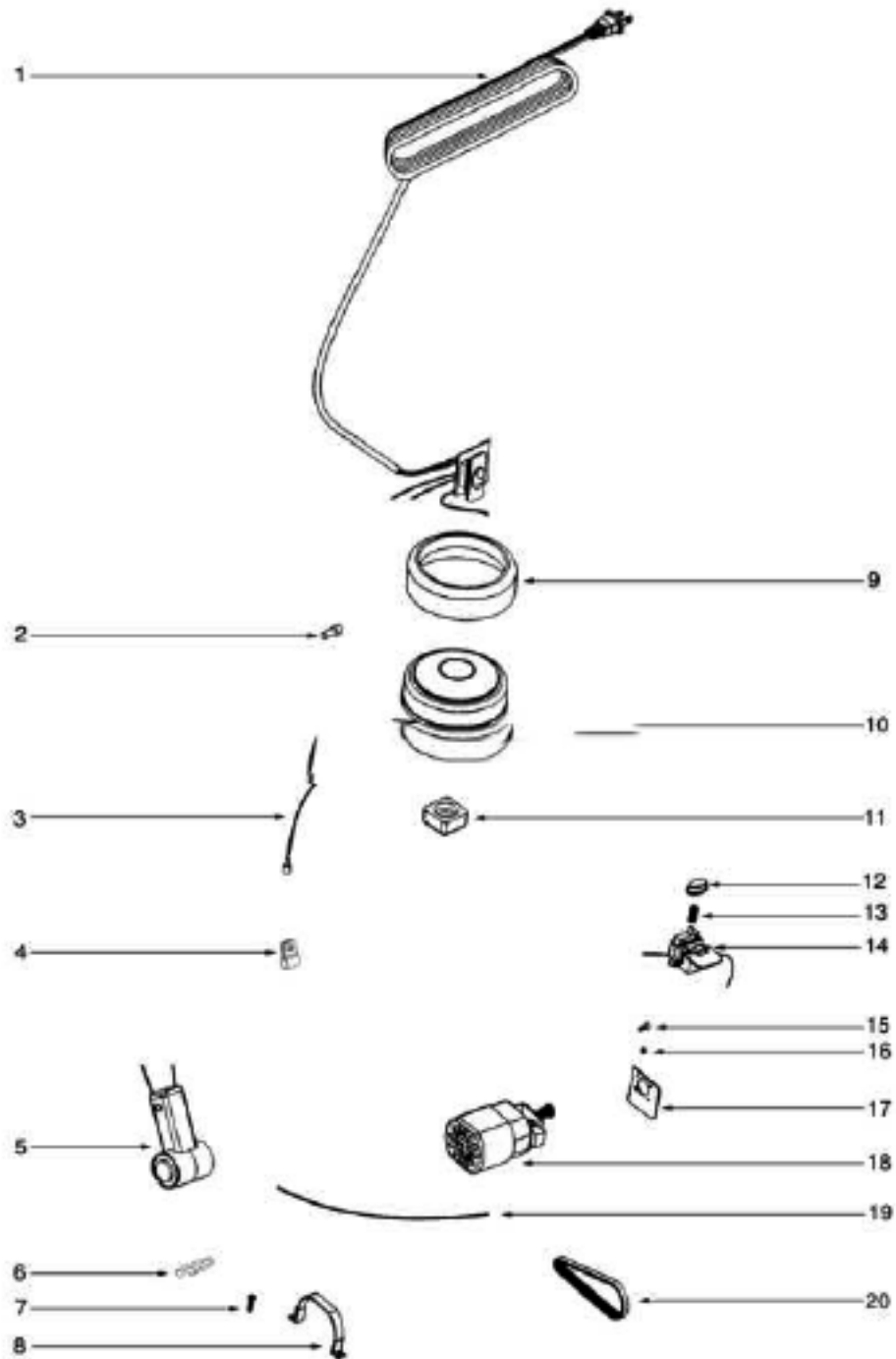


| Ref # | Part | Description | Comments | Qty |
|-------|------------|---------------------------|----------|-----|
| 1 | 61200-3 | UPPER PIVOTING HANDLE ASS | | |
| 2 | 61166 | SCREW PACKAGE | | |
| 3 | 61198-2 | NUT PACKAGE | | |
| 4 | 61199-3 | SPRING WASHER PACKAGE | | |
| 5 | 61165-1 | SCREW PACKAGE | | |
| 6 | 61213 | BRACKET - CORD RELEASE | | |
| 7 | 61212-383N | HOOK - CORD SWIVEL | | |
| 8 | 61211 | STOP - RUBBER | | |
| 9 | 73070-383N | WALL - BODY INSERT | | |
| 10 | 61189-2 | FIXED PLATE | | |
| 11 | 61975 | DUST CUP FILTER ASSY - PK | | |
| 12 | 72938 | DIRT CUP LID ASSEMBLY | | |
| 13 | 72940 | DIRT CUP ASSEMBLY | | |
| 14 | 61124 | FILTER - EXHAUST MICRON | | |
| 15 | 61201-383N | COVER - EXHAUST AIR | | |
| 16 | 61165-3 | SCREW PACKAGE | | |
| 17 | 61174 | FIX PLATE - HANDLE RELEAS | | |
| 18 | 73081-383N | BODY - RIGHT MAIN | | |
| 19 | 61198-3 | NUT PACKAGE | | |
| 20 | 72806 | OWNER'S GUIDE | | |
| 21 | 61307 | EXTENTION HOSE ASSEMBLY | | |



| Ref # | Part | Description | Comments | Qty |
|-------|------------|---------------------------|----------|-----|
| 1 | 61126 | DUSTING BRUSH | | |
| 2 | 61160-288N | WAND SUPPORT (UPPER) | | |
| 4 | 61159-383N | SLEEVE - BUSHING | | |
| 5 | 73076-383N | BODY - LEFT MAIN | | |
| 6 | 61129-1 | CLEANER HOSE ASSEMBLY | | |
| 7 | 61127 | NESTING WAND SET | | |
| 8 | 73098 | E-RING | | |
| 9 | 61680-1 | TORQUE SPRING (LH) - PKGD | | |
| 10 | 61163-288N | WAND SUPPORT (LOWER) | | |
| 13 | 73095-383N | COVER - NOZZLE INTAKE | | |
| 14 | 61670 | BRUSHROLL ASSEMBLY - PKGD | | |
| 15 | 61189-3 | METAL NOZZLE PLATE | | |
| 16 | 61165-7 | SCREW PACKAGE | | |
| 17 | 61469-383N | COVER - SQUEEGEE | | |
| 19 | 61165-3 | SCREW PACKAGE | | |
| 20 | 61174 | FIX PLATE - HANDLE RELEAS | | |
| 21 | 61173 | BUTTON - METAL LOCKING | | |
| 22 | 61180 | SPRING PACKAGE | | |
| 24 | 73074 | UPPER BEND PIPE ASSEMBLY | | |
| 25 | 61171 | SEAL RING | | |
| 26 | 73086-313N | LENS - RESET INDICATOR | | |
| 27 | 61175-3 | HOOD ASSEMBLY | | |
| 28 | 61166 | SCREW PACKAGE | | |
| 29 | 61463 | FOOT PEDAL ASSEMBLY | | |
| 30 | 61681-1 | TORQUE SPRING (RH) - PKGD | | |
| 31 | 73099-288N | REAR WHEEL ASSEMBLY | | |
| 32 | 73100 | REAR WHEEL ASSEMBLY | | |
| 33 | 61170-3 | BASE ASSEMBLY - PACKAGED | | |
| 34 | 61164 | FRONT WHEEL ASSEMBLY | | |
| 35 | 73106 | PIN - FRONT WHEEL | | |
| 36 | 61165-1 | SCREW PACKAGE | | |
| 37 | 61167-288N | FURNITURE GUARD | | |
| 38 | 61465-119N | SQUEEGEE | | |
| | 61176 | SPRING PACKAGE | | |



| Ref # | Part | Description | Comments | Qty |
|-------|------------|---------------------------|----------|-----|
| 1 | 61178-4 | POWER CORD & PCB ASSY - P | | |
| 2 | 61195 | ELECTRICAL CONTACT PACKAG | | |
| 3 | 61184-1 | WIRE - TERMINATED | | |
| 4 | 73077 | P CLIP | | |
| 5 | 61186-383N | JOINT - NOZZLE PIVOT | | |
| 6 | 73083 | PLUG - PIVOT JOINT | | |
| 7 | 61165-1 | SCREW PACKAGE | | |
| 8 | 61187 | CLAMP - MOTOR | | |
| 9 | 61179-1 | MOUNT - FRONT MOTOR | | |
| 10 | 61185-2 | MOTOR ASSEMBLY - CARTONED | | |
| 11 | 61182-3 | MOUNT - REAR MOTOR | | |
| 12 | 61190-288N | BUTTON - RESET PUSH | | |
| 13 | 61191 | SPRING - COMPRESSION | | |
| 14 | 61192-1 | CIRCUIT BREAKER ASSEMBLY | | |
| 15 | 61165-4 | SCREW PACKAGE | | |
| 16 | 61199-4 | SPRING WASHER PACKAGE | | |
| 17 | 61189-1 | FIXED PLATE | | |
| 18 | 61188-2 | MOTOR & GEAR ASSEMBLY - P | | |
| 19 | 61184-4 | WIRE - TERMINATED | | |
| 20 | 61121 | BELT - COG | | |