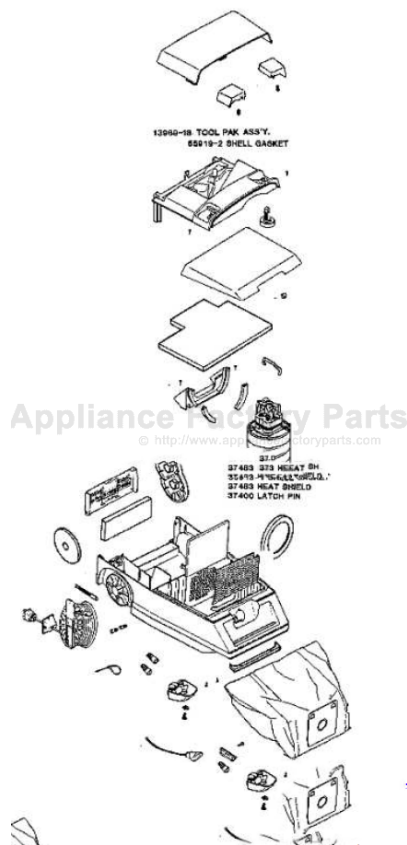


This Owner's Manual is provided and hosted by [Appliance Factory Parts](http://Appliance Factory Parts).



# Eureka 8280B Owner's Manual

[Shop genuine replacement parts for Eureka 8280B](#)



[Find Your Eureka Vacuum Cleaner Parts - Select From 855 Models](#)

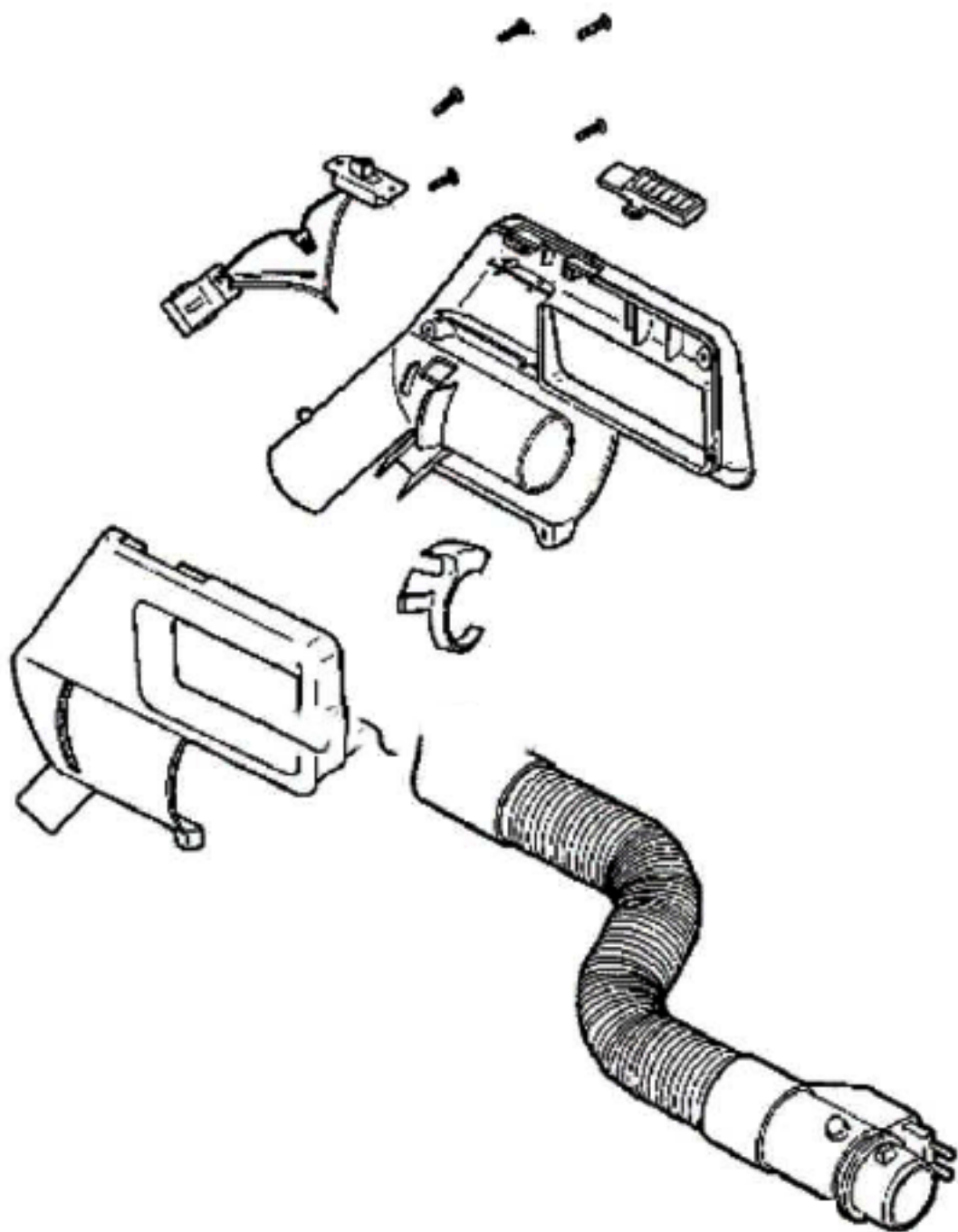
----- Manual continues below part list -----

## Available Replacement Parts for Eureka 8280B

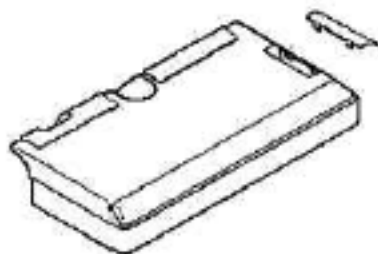
<a href="#">ER-1050</a>	BELT, EUREKA 1 PACK
<a href="#">ER-1422</a>	BAG EUREKA 3 PACK



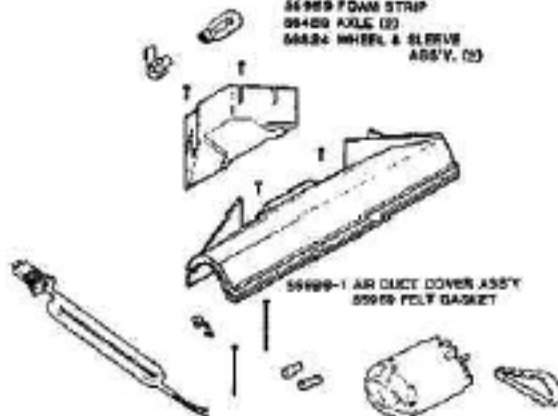
Ref #	Part	Description	Comments	Qty
1	13890-1	COVER - TOOL PAK - PACKAG		
2	14110-1	COVER - BOTTOM		
3	26440-3	WHEEL - REAR		
4	26442A-5	BUTTON - CORD REEL		
5	26443A-5	BUTTON - SWITCH		
6	26450-1	GUIDE - CORD		
7	26651-6	CONNECTOR ASSEMBLY		
8	26663-1	HANDLE - LOWER		
9	26673	MOTOR ASSEMBLY - PACKAGED		
10	37402	EXHAUST FILTER		
11	37403-1	CASTER		
12	37408	SOUND FOAM		
13	37483	HEAT SHIELD		
14	37788	MOTOR FILTER		
15	42797	SPRING - CARPET NOZZLE		
16	52358	PAPER BAG - STYLE V		
17	53141	TIE - CABLE		
18	53197-1	SCREW PACKAGE		
19	53214-1	WIRE SPLICE 5		
20	53238-11	SCREW PACKAGE		
21	55446	NUT - SWITCH		
22	55463	GASKET - MOTOR STACK		
23	55919-1	GASKET - SHELL		
24	55919-2	GASKET - SHELL		
25	55940-1	CLIP - FURNITURE GUARD		
26	56146	THERMOSTAT		
27	56235-6	EXHAUST COVER ASSEMBLY		
28	56250	MOTOR CLIP		
29	56376	WASHER		
30	EW22-37	WIRE SPLICE 5		
31	EW312-8T8ZP	SCREW PACKAGE		



Ref #	Part	Description	Comments	Qty
1	37774-1	SWITCH & CONNECTOR ASSY		
2	37789-1	COVER - BLEEDER		
3	38124-1	COVER & GRAPHICS ASSEMBLY		
4	53257-1	SCREWS - PACKAGE 10		
5	54009-2	HANDLE ASSY 2 WIRE (PACKA		
6	56579-1	HOSE (Without Handle)		

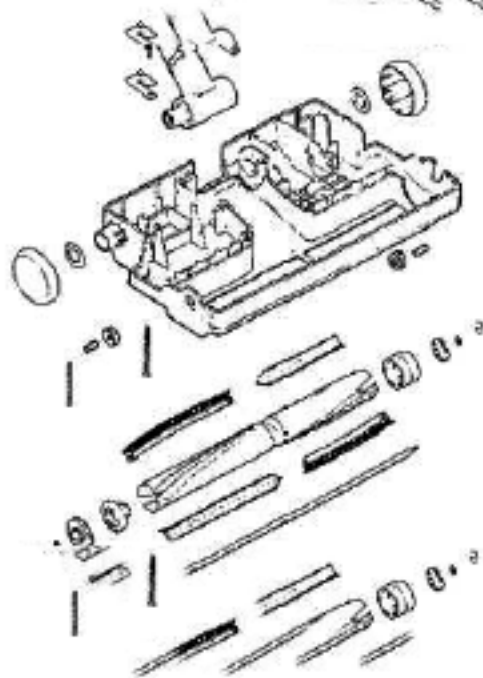


55250-1 DIS-TURBULATOR COVER ASS'Y.  
 55932-1 FELT GASKET  
 56989 FOAM STRIP  
 56488 AXLE (2)  
 56524 WHEEL & SLEEVES  
 ASS'Y. (2)



56989-1 AIR DUCT COVER ASS'Y  
 55932 FELT GASKET

56977-1 POWERHEAD BAGG ASS'Y. (INCLUDES)



Ref #	Part	Description	Comments	Qty
1	13650	TUBE - DISTURBULATOR		
2	26159-7	MOTOR ASSEMBLY - CARTONED		
3	26469-1	WINDOW - BELT		
4	26590-2	DISTURBULATOR ASSY - CRTN		
5	37434-5	WHEEL - REAR		
6	37755-1	CORD & SPRING ASSEMBLY		
7	40009A	LAMP - HEADLIGHT		
8	52201A	BELT PKG ASSY (PH)		
9	52988-2	BRISTLE STRIP SET		
10	52995	DISTURBULATOR REPAIR KIT		
11	53158	LOCK NUT PACKAGE		
12	53167	WASHER - SHAFT PACKAGE		
13	53190-1	BUSHING - STRAIN RELIEF-P		
14	53238-18	SCREW PACKAGE		
15	53238-19	SCREW PACKAGE		
16	53238-8	SCREW PACKAGE		
17	53242	DISTURBULATOR CAP		
18	53243	CAP - DISTURBULATOR		
19	53824	40" CLEAR TUBE W/NUT & LO		
20	54016-2	POWERHEAD HOOD ASSY - PAC		
21	55968	GASKET - FELT		
22	55969	GASKET - FELT		
23	55970	GASKET - FELT		
24	55971	GASKET - FELT		
25	55979	SPRING STRAP		
26	55980	STRAP		
27	56180	FELT WASHER		
28	56232-1	DISTURBULATOR COVER ASSEM		
29	56233-1	HANDLE SOCKET ASSEMBLY		
30	56489	AXLE		
31	56677-1	POWERHEAD BASE ASSY - PAC		
32	56698-1	AIR DUCT COVER ASSEMBLY		
33	56824	WHEEL & SLEEVE ASSEMBLY		
34	EW22-27	WIRE SPLICE 5		



37739-1 UPPER WAND ASS'Y.



37737 LOWER WAND ASS'Y.



26082-3 CREVICE TOOL



26002-6 FLOOR & WALL BRUSH



34681-7 UPHOLSTERY NOZZLE  
46186 INSERT



45947-7 DUSTING BRUSH  
33787 INSERT

Ref #	Part	Description	Comments	Qty
1	26002-6	FLOOR & WL BRUSH & ELBOW-		
2	26082-3	TOOL - CREVICE		
3	33787	INSERT - RINGLOCK BRUSH		
4	34591-7	UPHOLSTERY NOZZLE ASSY -		
5	37737	WAND - LOWER		
6	37738-1	UPPER WAND ASSEMBLY		
7	45947-7	DUSTING BRUSH - PACKAGED		
8	46186	BRUSH		