

This Owner's Manual is provided and hosted by [Appliance Factory Parts](#).



Eureka 8283F Owner's Manual

[Shop genuine replacement parts for Eureka 8283F](#)

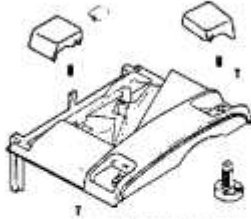


[Find Your Eureka Vacuum Cleaner Parts - Select From 853 Models](#)

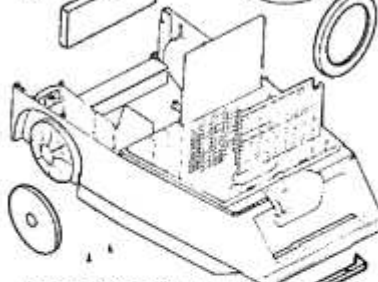
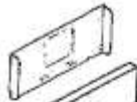
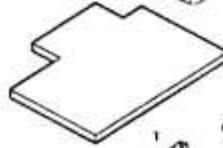
----- Manual continues below -----



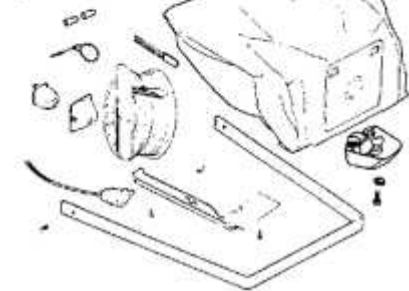
53850-22 TOOL PAK ASS'Y.
55919-2 SHELL GASKET



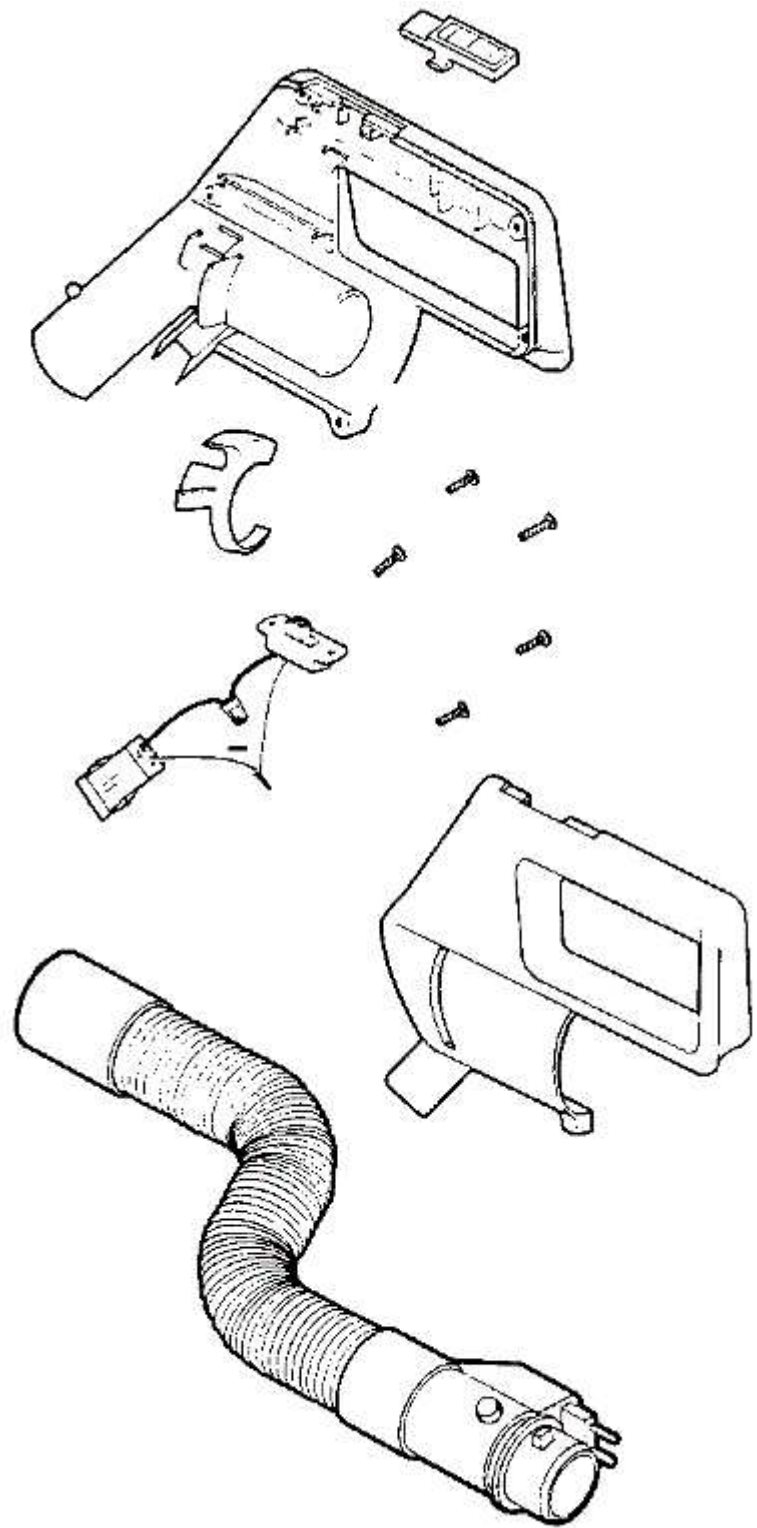
55918-2 LIGHT SWITCH HOSE
56278 WIRE



53540-1 LOWER SHELL ASS'Y.
55919-1 SHELL GASKET
37463 HEAT SHIELD
37400 LATCH PIN



1	14110-4	COVER - BOTTOM		
2	26440-1	WHEEL - REAR		
3	26442A-1	BUTTON - CORD REEL		
4	26444-1	LENS		
5	26450-1	GUIDE - CORD		
6	26651-1	CONNECTOR ASSEMBLY		
7	26663-1	HANDLE - LOWER		
8	37402	EXHAUST FILTER		
9	37403-1	CASTER		
10	37408	SOUND FOAM		
11	37483	HEAT SHIELD		
12	37788	MOTOR FILTER		
13	42797	SPRING - CARPET NOZZLE		
14	52358	PAPER BAG PKG ASSY (STYLE		
15	53141	TIE - CABLE		
16	53197-1	SCREW PACKAGE		
17	53214-2	WIRE SPLICE 5		
18	53214-3	WIRE SPLICE 5		
19	53238-11	SCREW PACKAGE		
20	53238-8	SCREW PACKAGE		
21	53376	MOTOR ASSEMBLY - PACKAGED		
22	54274-1	COVER - TOOL PAK - PACKAG		
23	55446	NUT - SWITCH		
24	55463	GASKET - MOTOR STACK		
25	55919-1	GASKET - SHELL		
26	55919-2	GASKET - SHELL		
27	55940-1	CLIP - FURNITURE GUARD		
28	56146	THERMOSTAT		
29	56235-1	EXHAUST COVER ASSEMBLY		
30	56250	MOTOR CLIP		
31	56376	WASHER		



53499-8 HOSE ASSEMBLY COMPLETE

1	37774-1	SWITCH & CONNECTOR ASSY		
2	37789-4	COVER - BLEEDER		
3	38124-4	COVER & GRAPHICS ASSEMBLY		
4	53257-1	SCREWS - PACKAGE 10		
5	53499-5	HOSE ASSEMBLY - CARTONED		
6	53543-1	HOSE ASSEMBLY - CARTONED		
7	54009-3	HANDLE ASSY 2 WIRE (PACKA		



37738-1 UPPER WAND ASS'Y.



37737 LOWER WAND ASS'Y.



54309-6 FLOOR & WALL BRUSH



53440-3 CREVICE TOOL



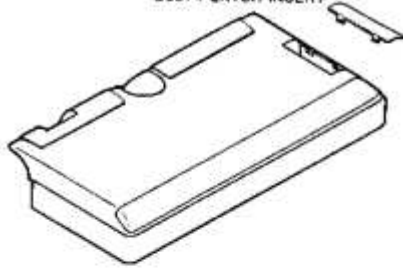
53454-6 UPHOLSTERY NOZZLE



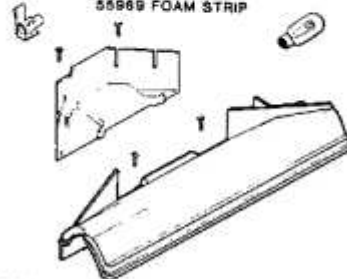
53455-4 DUSTING BRUSH

1	37737	WAND - LOWER		
2	37738-1	UPPER WAND ASSEMBLY		
3	53440-3	TOOL - CREVICE		
4	53454-6	UPHOLSTERY NOZZLE ASSY -		
5	53455-4	DUSTING BRUSH - PACKAGED		
6	54309-6	FLOOR & WL BRUSH & ELBOW-		

56233-1 HANDLE SOCKET ASS'Y.
55974 LATCH INSERT



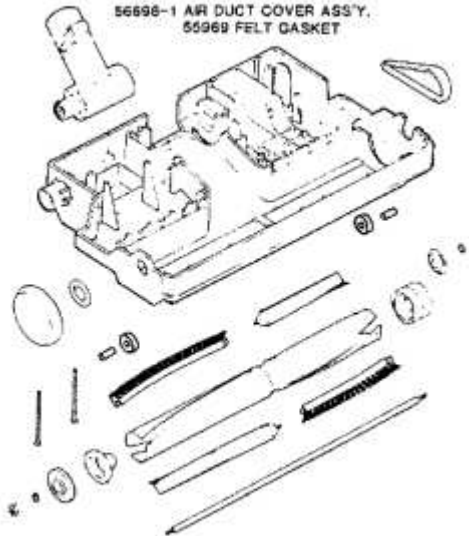
56232-1 DISTURBULATOR COVER ASS'Y
55971 FELT GASKET
55969 FOAM STRIP



53866-1 POWERHEAD BASE ASS'Y.(INCLUDES)
56824 WHEEL & SLEEVE ASS'Y. (2)
56489 AXLE (2)
55970 FELT GASKET (2)
55968 FELT GASKET
55971 FELT GASKET



56998-1 AIR DUCT COVER ASS'Y.
55969 FELT GASKET



53411-1 COMPLETE DISTURBULATOR ASSEMBLY
52995 DIST. REPAIR KIT
52995 PULLEY & BEARING ASS'Y. (INCLUDES)
53158 LOCKNUT (2 USED)
52995 SHAFT (INCLUDES)
52995 BEARING & RETAINER ASS'Y.

1	13650	TUBE - DISTURBULATOR		
2	26469-1	WINDOW - BELT		
3	37434-1	WHEEL - REAR		
4	37755-1	CORD & SPRING ASSEMBLY		
5	40009A	LAMP - HEADLIGHT		
6	52201A	BELT PKG ASSY (PH)		
7	52988-2	BRISTLE STRIP SET		
8	52995	DISTURBULATOR REPAIR KIT		
9	53158	LOCK NUT PACKAGE		
10	53167	WASHER - SHAFT PACKAGE		
11	53190-1	BUSHING - STRAIN RELIEF-P		
12	53214-2	WIRE SPLICE 5		
13	53238-18	SCREW PACKAGE		
14	53238-19	SCREW PACKAGE		
15	53238-8	SCREW PACKAGE		
16	53242	DISTURBULATOR CAP		
17	53243	CAP - DISTURBULATOR		
18	53411-1	DISTURBULATOR ASSY - CRTN		
19	53419-2	MOTOR ASSEMBLY - CARTONED		
20	53866-1	POWERHEAD BASE ASSY - PAC		
21	54016-15	POWERHEAD HOOD ASSY - PAC		
22	55968	GASKET - FELT		
23	55969	GASKET - FELT		
24	55970	GASKET - FELT		
25	55971	GASKET - FELT		
26	55974	INSERT - LATCH		
27	55979	SPRING STRAP		
28	55980	STRAP		
29	56180	FELT WASHER		
30	56232-1	DISTURBULATOR COVER ASSEM		