

This Owner's Manual is provided and hosted by [Appliance Factory Parts](http://www.appliancefactoryparts.com).



Eureka 8288B Owner's Manual

[Shop genuine replacement parts for Eureka 8288B](#)



[Find Your Eureka Vacuum Cleaner Parts - Select From 855 Models](#)

----- Manual continues below part list -----

Available Replacement Parts for Eureka 8288B

ER-1050	BELT, EUREKA 1 PACK
ER-1422	BAG EUREKA 3 PACK
155506	MOTOR

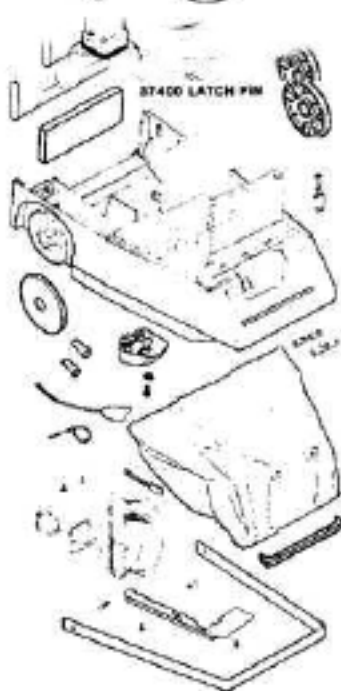
60880-21 FUEL PAN ASS'Y.
86910-2 SHIELD GASKET



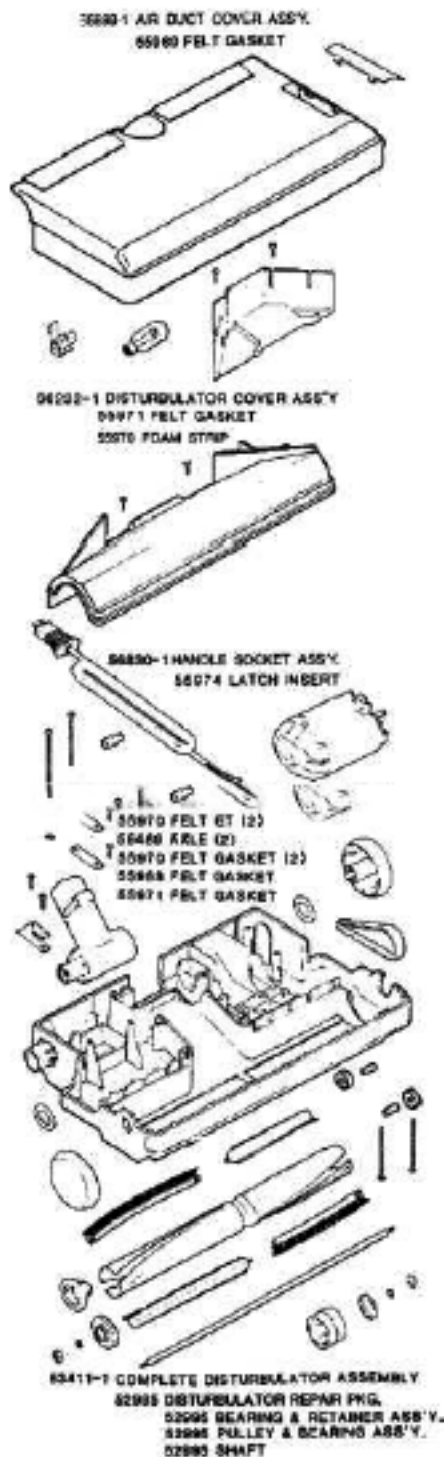
67401-1 LIGHT SWITCH HOSE
86076 WRENCH



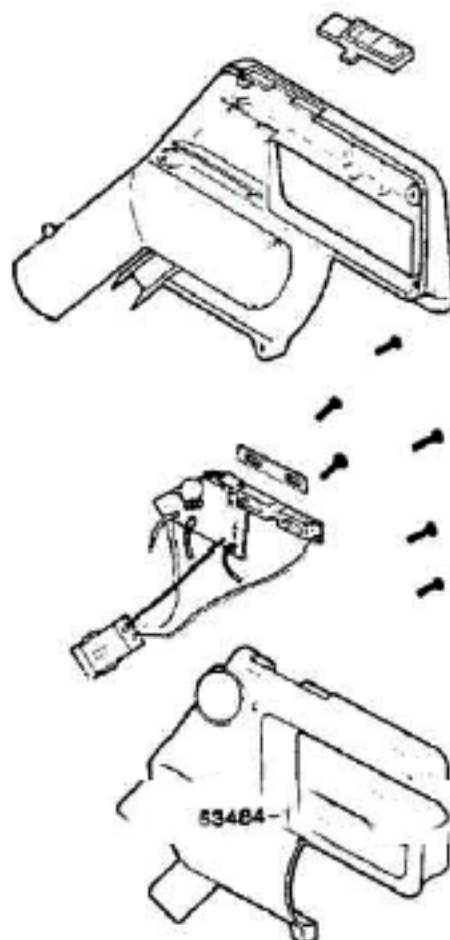
87400 LATCH PIN



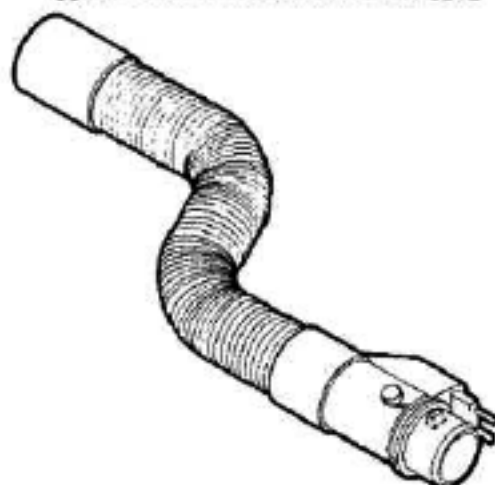
Ref #	Part	Description	Comments	Qty
1	14110-4	COVER - BOTTOM		
2	26442A-3	BUTTON - CORD REEL		
3	26443A-3	BUTTON - SWITCH		
4	26450-1	GUIDE - CORD		
5	26630-1	SPEED CONTROL ASSEMBLY		
6	26653-4	HANDLE - LOWER		
7	37402	EXHAUST FILTER		
8	37403-1	CASTER		
9	37408	SOUND FOAM		
10	37483	HEAT SHIELD		
11	37528-7	PLUG		
12	37783	LENS		
13	37785-2	WHEEL ASSEMBLY		
14	37788	MOTOR FILTER		
15	42797	SPRING - CARPET NOZZLE		
16	52358	PAPER BAG PKG ASSY (STYLE		
17	53141	TIE - CABLE (PURCHASED)		
18	53197-1	SCREW PACKAGE		
19	53214-3	WIRE SPLICE 5		
20	53228-10	SCREWS - PACKAGE 10		
21	53238-8	SCREW PACKAGE		
22	54274-1	COVER - TOOL PAK - PACKAG		
23	55446	NUT - SWITCH		
24	55463	GASKET - MOTOR STACK		
25	55919-1	GASKET - SHELL		
26	55919-2	GASKET - SHELL		
27	55940-1	CLIP - FURNITURE GUARD		
28	56146	THERMOSTAT		
29	56235-8	EXHAUST COVER ASSEMBLY		
30	56376	WASHER		
31	57491-1	HOSE - LIGHT SWITCH		



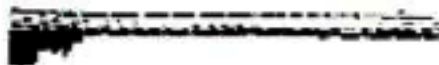
Ref #	Part	Description	Comments	Qty
1	13650	TUBE - DISTURBULATOR		
2	26469-1	WINDOW - BELT		
3	37434-2	WHEEL - REAR		
4	37755-1	CORD & SPRING ASSEMBLY		
5	40009A	LAMP - HEADLIGHT		
6	52201A	BELT PACKAGE ASSY - STYLE		
7	52988-2	BRISTLE STRIP SET		
8	52995	DISTURBULATOR REPAIR KIT		
9	53158	LOCK NUT PACKAGE		
10	53167	WASHER - SHAFT PACKAGE		
11	53190-1	BUSHING - STRAIN RELIEF-P		
12	53214-2	WIRE SPLICE 5		
13	53238-18	SCREW PACKAGE		
14	53238-8	SCREW PACKAGE		
15	53242	DISTURBULATOR CAP		
16	53243	CAP - DISTURBULATOR		
17	53411-1	DISTURBULATOR ASSY - CRTN		
18	53419-2	MOTOR ASSEMBLY - CARTONED		
19	53866-1	POWERHEAD BASE ASSY - PAC		
20	54016-3	POWERHEAD HOOD ASSY - PAC		
21	55968	GASKET - FELT		
22	55969	GASKET - FELT		
23	55970	GASKET - FELT		
24	55971	GASKET - FELT		
25	55974	INSERT - LATCH		
26	55979	SPRING STRAP		
27	55980	STRAP		
28	56180	FELT WASHER		
29	56232-1	DISTURBULATOR COVER ASSEM		
30	56489	AXLE		
31	56698-1	AIR DUCT COVER ASSEMBLY		
32	56824	WHEEL & SLEEVE ASSEMBLY		
33	56830-1	HANDLE SOCKET & CORD KIT		



534B4-1 HOSE ASSEMBLY COMPLETE



Ref #	Part	Description	Comments	Qty
1	26709-2	HANDLE ASSY 3 WIRE (PACKA		
2	53257-1	SCREWS - PACKAGE 10		
3	53413-1	HOSE & COUPLING ASSY - CR		
4	53484-1	HOSE ASSEMBLY - CARTONED		
5	54009-6	HANDLE ASSY 3 WIRE (PACKA		



37738-1 UPPER WAND ASS'Y.



37737 LOWER WAND ASS'Y.



53440-3 CREVICE TOOL



53467-4 UPHOLSTERY NOZZLE

11187-7 INSERTER NOZZLE



53359-3 DUSTING BRUSH

53353389 INSERT

Ref #	Part	Description	Comments	Qty
1	37737	WAND - LOWER		
2	37738-1	UPPER WAND ASSEMBLY		
3	53359-3	DUSTING BRUSH - PACKAGED		
4	53440-3	TOOL - CREVICE		
5	53467-4	UPHOLSTERY NOZZLE ASSY -		