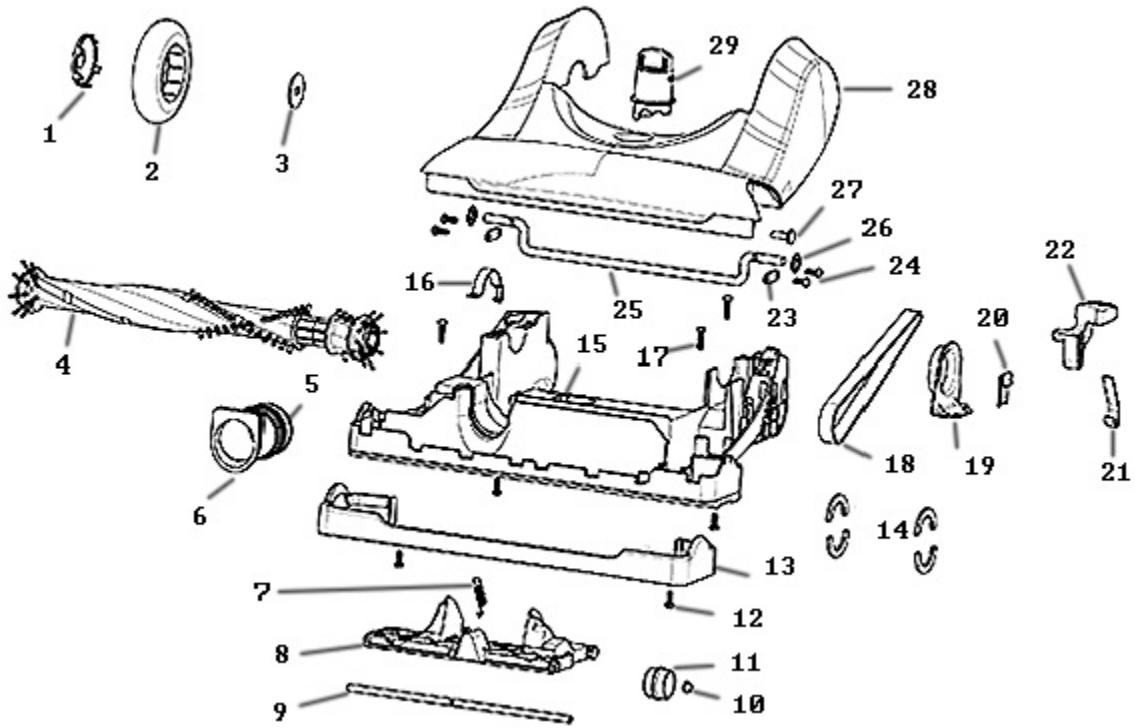


Main - 8811AVZ

Ref #	Part	Description	Comments	Qty
1	81078-576P	COVER - TURBO		
2	63310	SCREW PACKAGE		
3	81056-355N	WIRING COVER		
4	82399-355N	HOUSING - REAR (NO SENSOR		
5	82519-355N	SEAL- CUP INTAKE		
6	78165-502N	COVER - EAR		
7	78150-355N	PLATE - COVER		
8	77647A-355N	RETAINER - HOSE (LOWER)		
9	72756-355N	RELEASE - CORD		
10	76621-1	SWITCH - 2 POSITION (ROUN		
11	77632-489N	EAR - LEFT (SWITCH ONLY)		
12	77969-576P	POD - LEFT		
13	78411	SUPPLY CORD ASSEMBLY		
14	78410	JUMPER CORD ASSY		
15	46713-3	TIE - CABLE (PURCHASED)		
16	60192-1	WIRE SPLICE 5		
17	77624-119N	BUSHING - MOTOR		
	62082	SCREW PACKAGE		
18	78792-119N	RING - MOTOR ADJUSTMENT		
19	62568-2	MOTOR ASSEMBLY - PACKAGED		
20	82175-119N	GASKET - MOTOR CAN		
21	78195	HEADLIGHT ASSY OVERMOLDED		
22	57940-3	LAMP - HEADLIGHT		
23	65131-18	MOTOR COVER ASSY - PACKAG		
24	77973	HEPA EXHAUST FILTER ASSY		
25	77707-313N	LENS - HEADLIGHT		
26	65133-9	EXHAUST GRILL - PACKAGED		
27	81257	FILTER- PRE-MOTOR		
28	81482-1	GASKET		
29	78399-355N	SHIELD - JUMPER CORD		
30	77631-489N	EAR - RIGHT (DUSTER)		
31	77970-576P	POD - RIGHT		
32	79699-11	DUSTER CUP ASSEMBLY		
33	77560-5	ELECTROSTATIC DSTR HANDLE		
34	78459-10	HANDLE ASSEMBLY		
35	77554-355N	CLIP - TURBO		
36	81079-355N	HANDLE - CARRY		
	82365-355N	CORD HOOK		

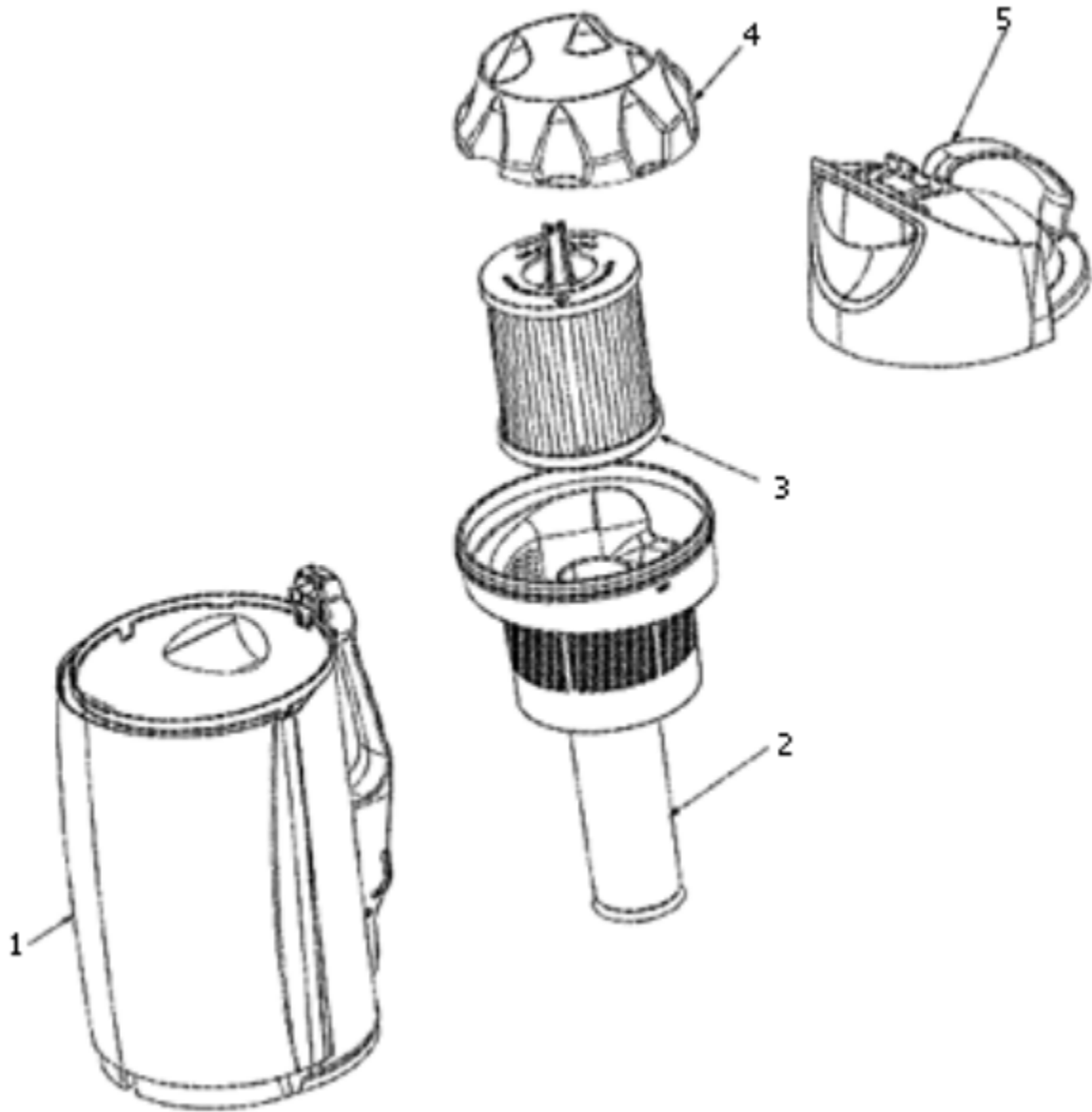
Hood & Base - 8811AVZ



Hood & Base - 8811AVZ

Ref #	Part	Description	Comments	Qty
4	62365-4	BRUSHROLL ASSEMBLY - CRTN		
5	82353	BASE HOSE ASSEMBLY		
6	78209-355N	ADAPTER - BASE HOSE		
7	54943-1	SPRING PACKAGE		
8	82354	WHEEL CARRIAGE ASSEMBLY		
9	77651	AXLE - FRONT		
10	53121-1	PUSH NUT PACKAGE (10)		
11	77978-355N	WHEEL OVERMOLD ASSEMBLY		
12	53238-8	SCREW PACKAGE		
13	77664-355N	GUARD - FURNITURE		
14	73114	FELT - BASE		
15	82355-2	BASE ASSEMBLY		
16	74825	CLAMP - MOTOR		
17	53238-27	SCREW PACKAGE		
18	61120C	BELT PKG ASSY-STYLE U EXT		
19	77656	CLAMP - MOTOR		
20	74822	GUARD - BELT		
28	65130-16	HOOD ASSEMBLY - PACKAGED		
29	82708-453N	KNOB - HEIGHT ADJUSTMENT		

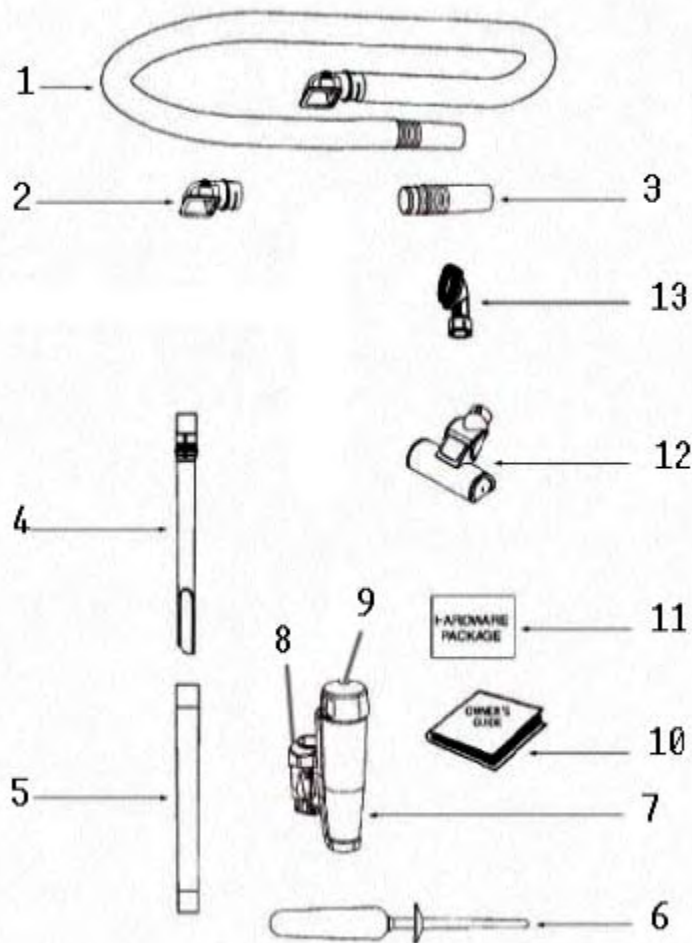
Cup & Filter - 8811AVZ



Cup & Filter - 8811AVZ

Ref #	Part	Description	Comments	Qty
1	81057-2	DUSTCUP & DOOR ASSEMBLY		
2	83986-1			
3	79910A	DUST CUP FILTER ASSEMBLY		
4	82401-453N	FILTER SHROUD		
5	81025-2	DUSTCUP COVER ASSEMBLY		

Accessories - 8811AVZ



Ref #	Part	Description	Comments	Qty
1	61865-15	HOSE ASSEMBLY - CARTONED		
2	82166	ELBOW ASSEMBLY		
3	78730	HOSE COUPLING (OVERMOLDED		
4	78232-453N	WAND - CREVICE		
5	78231-355N	WAND - OUTER		
6	77560-5	ELECTROSTATIC DSTR HANDLE		
7				
8	79699-11	DUSTER CUP ASSEMBLY		
9				
10	82099	OWNERS GUIDE		
11	79023	UPPER HANDLE SCREW PACKAG		
12	79994-1	TURBO NOZZLE ASSEMBLY		
13	80014-1	BRUSH - OVERMOLDED W/BRIS		