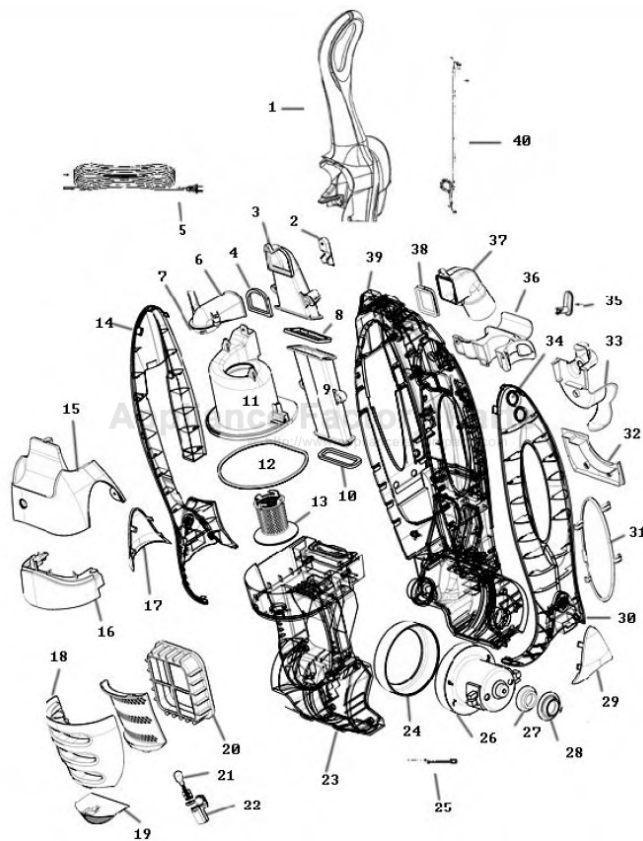


This Owner's Manual is provided and hosted by [Appliance Factory Parts](#).



# Eureka 8852AVZ Owner's Manual

[Shop genuine replacement parts for Eureka 8852AVZ](#)

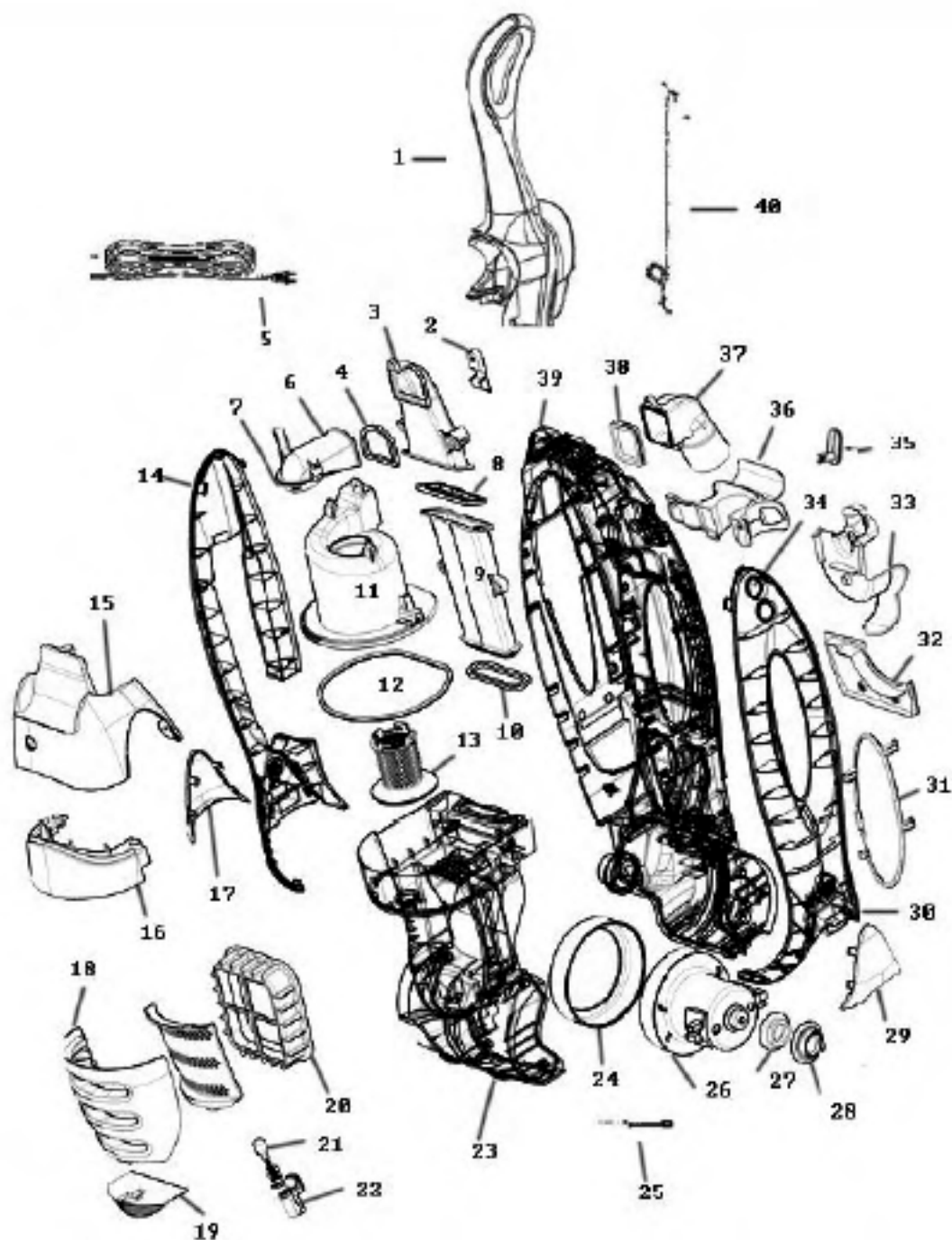


[Find Your Eureka Vacuum Cleaner Parts - Select From 855 Models](#)

----- Manual continues below part list -----

## Available Replacement Parts for Eureka 8852AVZ

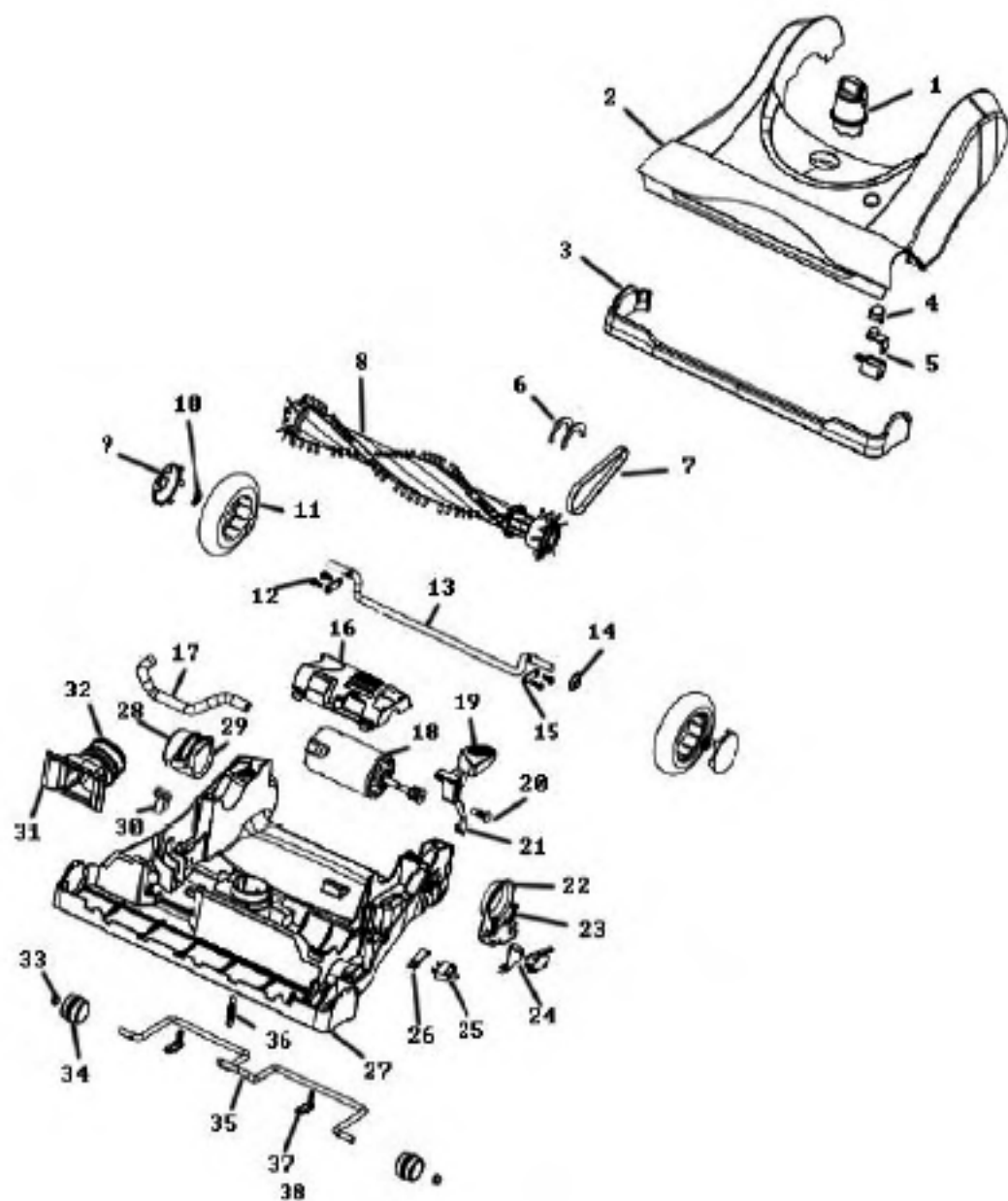
<a href="#">72393</a>	ELECTROLUX OXYGEN BELT (1 PACK)
<a href="#">E-61865-4</a>	hose assembly cartoned



## Main - 8852AVZ

Ref #	Part	Description	Comments	Qty
1	78459-2	HANDLE ASSY		
2	77554-355N	CLIP - TURBO		
3	78418	BACK AIR TUBE & GASKET AS		
4	77588	GASKET - BACK AIR TUBE		
5	78411	SUPPLY CORD ASSY		
6	77576-355N	ELBOW - CYCLONE (AIR TUBE		
7	78593	GASKET - CYCLONE AIR TUBE		
8	77579	GASKET - FRONT TUBE TOP		
9	78417-1	FRONT TUBE & GASKET ASSY		
10	77591	GASKET - FRONT AIR TUBE (		
11	77575-313N	CYCLONE		
12	77571	GASKET - CYCLONE		
13	77578-366N	SCREEN - FILTER		
14	77631-489N	EAR - RIGHT (DUSTER)		
15	85132-3	CYCLONE COVER ASSEMBLY -		
16	77967-506N	COVER - CYCLONE		
17	77970-505P	POD - RIGHT		
18	85133-3	EXHAUST GRILL - PACKAGED		
19	77707-313N	LENS - HEADLIGHT		
20	63347	HF-10 CAPTURE (UBER) ASSY		
21	57940-3	LAMP - HEADLIGHT		
22	78195	HEADLIGHT ASSY OVERMOLDED		
23	85131-3	MOTOR COVER ASSY - PACKAG		
24	77623-119N	GASKET - MOTOR CAN		
26	85136-1	MOTOR ASSEMBLY - CARTONED		
27	78792-119N	RING - MOTOR ADJUSTMENT		
28	77624-119N	BUSHING - MOTOR		
29	77969-505P	POD - LEFT		
30	77635-489N	EAR - LEFT		
31	78165-506N	COVER - EAR		
32	78150-355N	PLATE - COVER		
33	77847A-355N	RETAINER - HOSE (LOWER)		
34	76464	SWITCH - 2 POSITION (ROUN		
35	72756-355N	RELEASE - CORD		
36	77966-355N	HANDLE - CARRY		
37	77559-313N	ADAPTER - HOSE (90DEG ELB		
38	77582	GASKET - CYCLONE (HOSE AD		
39	85135-1	REAR HOUSING ASSEMBLY		
	78669	GASKET - REAR HOUSING		
40	78410	JUMPER CORD ASSY		
	77821-469P	COVER - INNER FILTER		
	78591	NEON LIGHT ASSY (PRE SENS		
	78201-313N	COVER - HOUSING (NEON)		
	78200-313N	HOUSING - NEON LIGHT		
	78574	RECTIFIER & TERMINAL ASSY	Not Pictured	

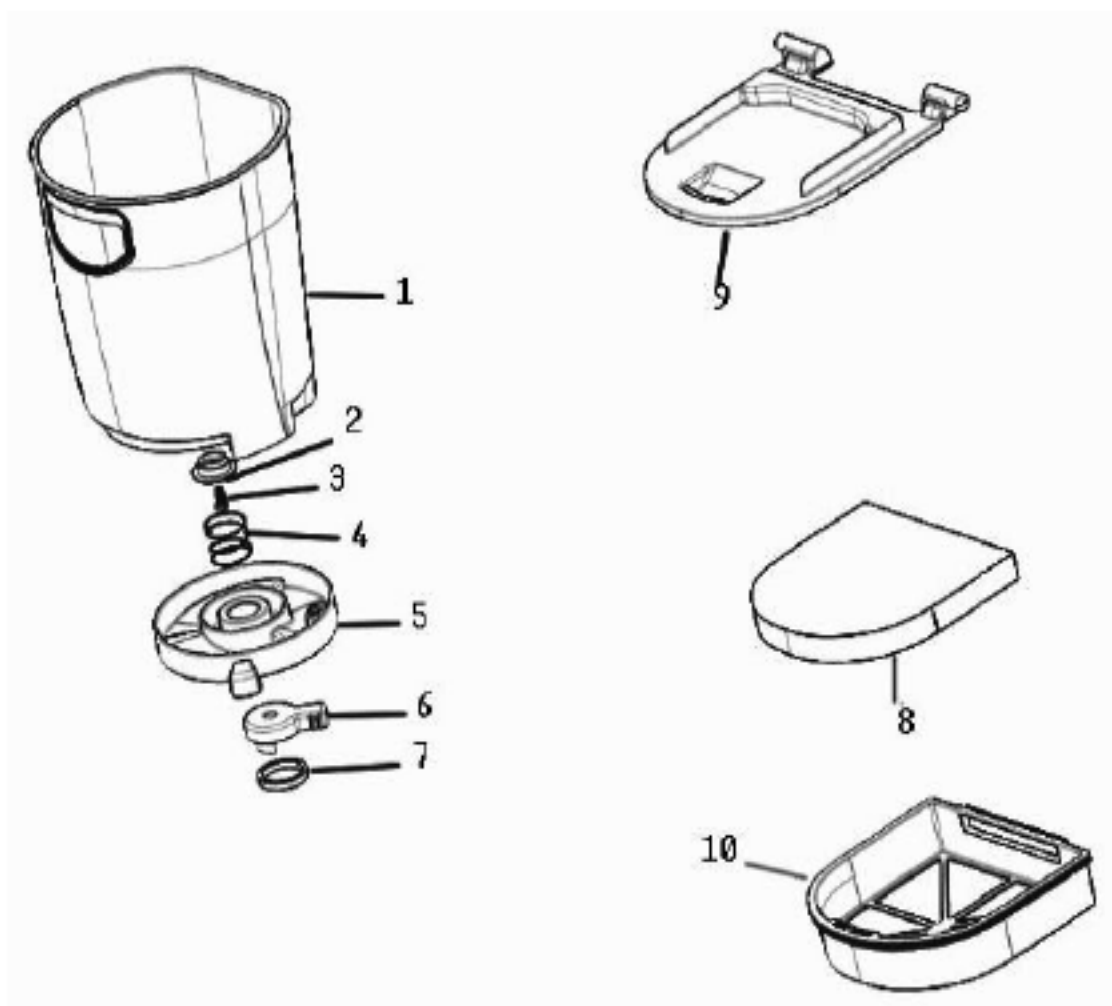
Hood & Base - 8852AVZ



## Hood &amp; Base - 8852AVZ

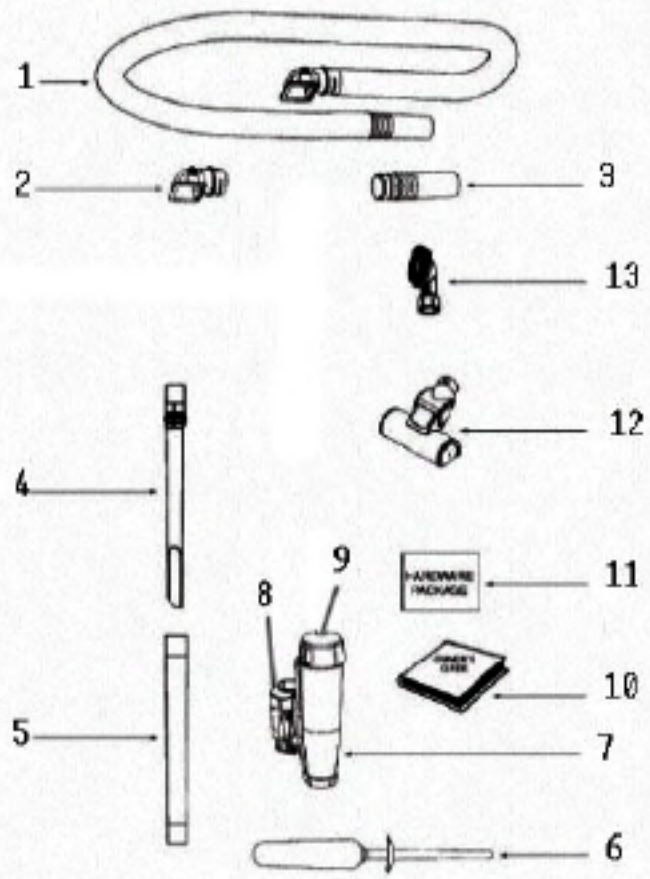
Ref #	Part	Description	Comments	Qty
1	78198-469P	KNOB - HEIGHT ADJUSTMENT		
2	85130-3	HOOD ASSEMBLY - PACKAGED		
3	77682-355N	GUARD - FURNITURE		
4	78009-313N	LENS - BRUSHROLL OVERLOAD		
5	78576	BRUSHROLL OVERLOAD LAMP A		
6	77658	GASKET - FELT		
7	72393	BELT - COGGED		
8	62365-5	BRUSHROLL ASSEMBLY - CRTN		
16	77697-355N	COVER - BRUSHROLL MOTOR		
17	78649	TUBE - BRUSHROLL MOTOR CO		
18	63730	MOTOR & PULLEY ASSEMBLY-C		
22	77656	CLAMP - MOTOR		
23	53238-27	SCREW PACKAGE		
24	59397-4	MICRO SWITCH & BRACKET AS		
25	72401	CIRCUIT PROTECTOR		
26	72514	BRACKET - CIRCUIT PROTECT		
27	65128-1	BASE ASSEMBLY - PACKAGED	comes with parts 10, 11, 12, 13, 14, 15, 19, 20, 21	
28	77657-355N	CLAMP - MOTOR PLASTIC		
29	78002	GASKET - CLAMP		
30	78577	GROMMET - MOTOR CLAMP		
31	78651-355N	ADAPTER - BASE HOSE		
32	77674	HOSE - BASE		
33	53121-1	PUSH NUT PACKAGE (10)		
34	77978-355N	WHEEL OVERMOLD ASSEMBLY		
35	77693	AXLE - FRONT		
36	54943	SPRING PACKAGE		
37	53201-2	AXLE CLAMP - PACKAGED		
38	63310	SCREW PACKAGE		
1	77672-505P			
	53238-8	SCREW PACKAGE	Hood Screws	

Cup & Filter - 8852AVZ



## Cup &amp; Filter - 8852AVZ

Ref #	Part	Description	Comments	Qty
1	78437-1	DUST CUP & HANDLE ASSEMBL		
2	77586-355N	WASHER - ELEVATOR		
3	63310	SCREW PACKAGE		
4	78166	SPRING - ELEVATOR		
5	77580-506N	ELEVATOR - CUP		
6	77627-333N	CAM - HEPA		
7	78164	GASKET - HEPA CAM		
8	77583			
9	78436	PRE-MOTOR FILTER LID & GA		
10	78434			



## Accessories - 8852AVZ

Ref #	Part	Description	Comments	Qty
1	61865-14	HOSE ASSEMBLY - CARTONED		
2	77559-313N	ADAPTER - HOSE (90DEG ELB		
3	78730	HOSE COUPLING (OVERMOLDED		
4	78232-355N	WAND - CREVICE		
5	78231-355N	WAND - OUTER		
6	77560	ELECTROSTATIC DUSTER HAND		
7	77561-506N	CUP - DUSTER		
8	65134	DUSTER VALVE ASSEMBLY		
9	77562-489N	AIR INLET - DUSTER		
10	28572			
11	77562-489N	CUP ASSEMBLY		
12	65134	ELECTROSTATIC DHAND		
13	A 77561-506N	CUP - DUSTER		
not pictured	134	DUSTER VALEMPLY	Hose	
		AIR INLET -		