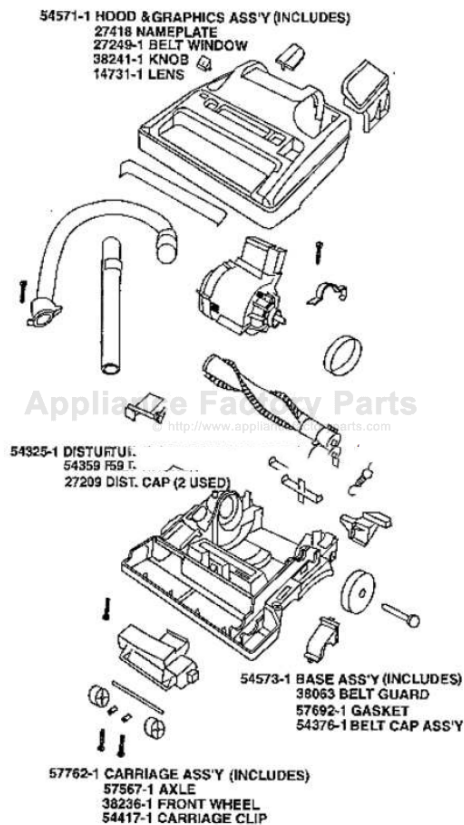


This Owner's Manual is provided and hosted by [Appliance Factory Parts](http://www.appliancefactoryparts.com).



Eureka 9834AT Owner's Manual

[Shop genuine replacement parts for Eureka 9834AT](#)



[Find Your Eureka Vacuum Cleaner Parts - Select From 855 Models](#)

----- Manual continues below part list -----

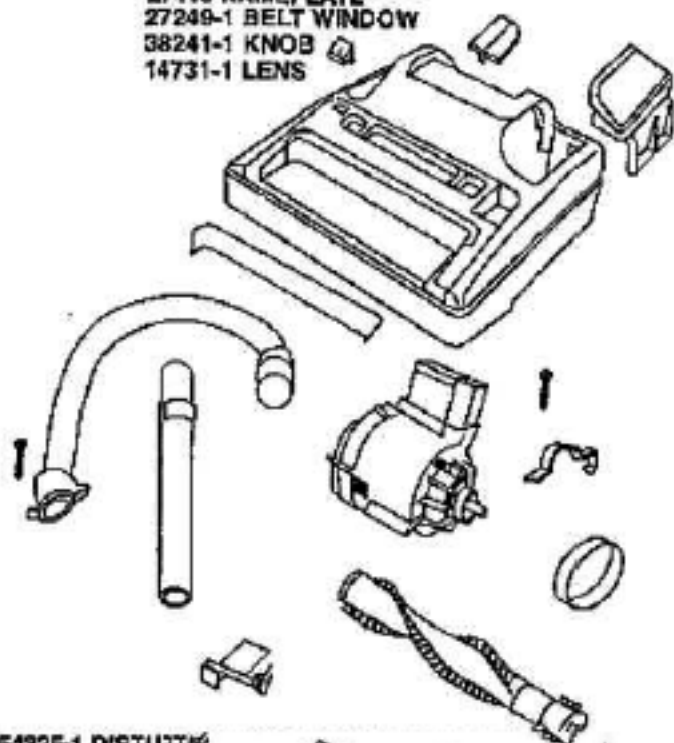
Available Replacement Parts for Eureka 9834AT

[ER-2017](#)

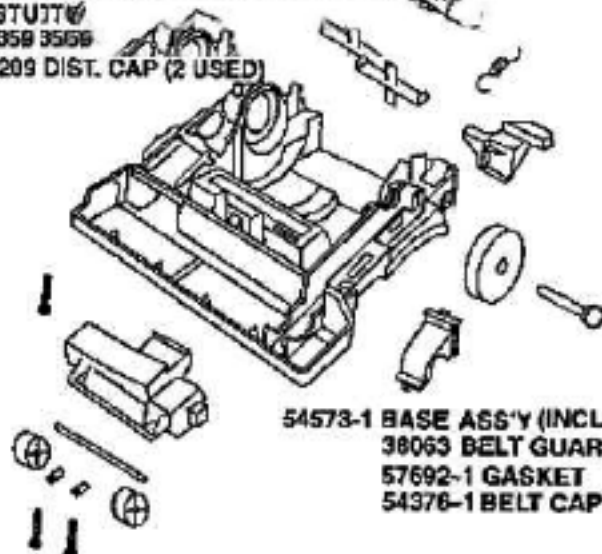
BRUSH ROLLER ROLL 54325-1

54571-1 HOOD & GRAPHICS ASS'Y (INCLUDES)

27416 NAMEPLATE
 27249-1 BELT WINDOW
 38241-1 KNOB
 14731-1 LENS

**54325-1 DISTUIT**

54359 3566
 27209 DIST. CAP (2 USED)

**54573-1 BASE ASS'Y (INCLUDES)**

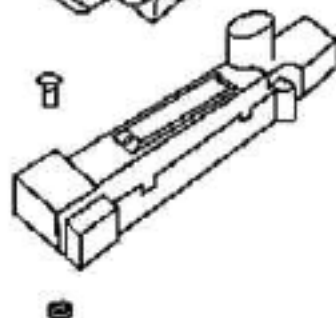
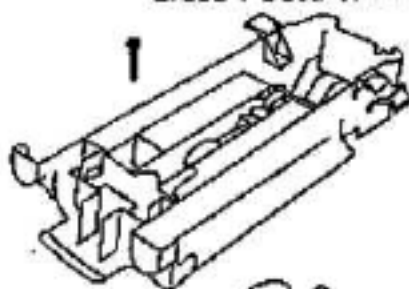
38063 BELT GUARD
 57692-1 GASKET
 54376-1 BELT CAP ASS'Y

57762-1 CARRIAGE ASS'Y (INCLUDES)

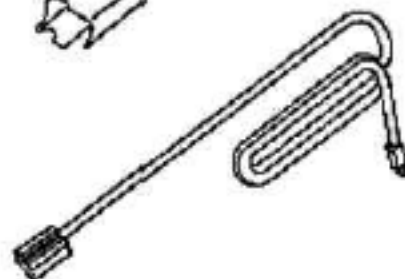
57567-1 AXLE
 38236-1 FRONT WHEEL
 54417-1 CARRIAGE CLIP

Ref #	Part	Description	Comments	Qty
1	14731-1	LENS (CLEAR)		
2	14990-1	WAND ASSEMBLY		
3	27201-2	WHEEL/BUSHING PACKAGE		
4	27202-1	RELEASE - HANDLE		
5	27249-1	WINDOW - BELT (STYLE 3)		
6	27251-2	PEDAL - SWITCH (STYLE 3)		
7	38063	GUARD - BELT		
8	38236-1	WHEEL - FRONT		
9	38240-1	SLIDE		
10	38241-1	KNOB		
11	38242	AXLE - REAR		
12	38243-1	CLAMP - MOTOR		
13	38381-1	RING - BLEEDER		
14	38405-1	REPLACEMENT DIVERTER VALV		
15	53076-2	SPRING & AXLE PACKAGE (6)		
16	53238-10	SCREW PACKAGE		
17	53238-13	SCREW PACKAGE		
18	53238-8	SCREW PACKAGE		
19	54312	BELT PACKAGE ASSEMBLY (U)		
20	54325-1	DISTURBULATOR ASSY - CAR		
21	54359	PACKAGE - FELT WASHER		
22	54376-1	BELT CAP & GASKET - PACKA		
23	54379-6	MOTOR ASSEMBLY - PKGD		
24	54417-1	PACKAGE - CARRIAGE CLIP		
25	54524-1	HOSE ASSEMBLY - CTND		
26	54571-1	HOOD ASSY - PACKAGED		
27	54573-1	BASE ASSY - CARTONED		
28	57567-1	AXLE - WHEEL		
29	57692-1	GASKET		
30	57762-1	CARRIAGE ASSEMBLY		

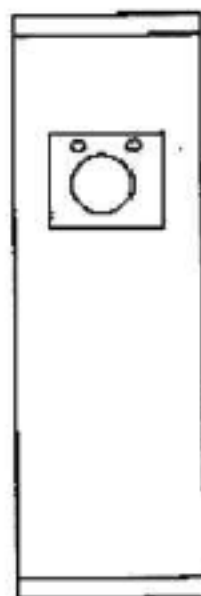
14991-1 TOOL PAK (INCLUDES)
27353-1 CORD RELEASE SLIDE



38301-4 UPPER HANDLE
ASS'Y (INCLUDES)
27207-1 HANDLE CAP



54574-2 BAG ASS'Y (INCLUDES)
38316-1 LOWER BAG SUPPORT
54383 PUSH-ON NUT
27379-1 BAG CAP
57565 BAG-ON
38238 BOT



Ref #	Part	Description	Comments	Qty
1	02061-1	LOWER HANDLE ASSEMBLY		
2	14991-1	TOOL PAK ASSY		
3	27172-7	CORD & PLUG ASSEMBLY		
4	27207-1	CAP - HANDLE		
5	27353-1	SLIDE - CORD RELEASE		
6	38238	INSERT - BOTTOM		
7	38301-4	UPPER HANDLE ASSEMBLY		
8	38316-1	LOWER BAG SUPPORT&GRPHCS		
9	53213-5	NUTS - PACKAGE 10		
10	53218-1	SCREW PACKAGE		
11	53238-29	SCREW PACKAGE		
12	53536-3	SNAP PIN - PACKAGED		
13	54383	NUT-PUSH ON PACKAGE 10		
14	54574-2	BAG ASSEMBLY - CARTONED		
15	57565	HANGER BAG		
16	57802	PAPER BAG PKG ASSY (STYLE		



**54363-3 ARMATURE & MOTOR
BRUSH KIT W/ BEARING (INCLUDES)
54472-1 BRUSH HOLDER AND
BRUSH ASS'Y**



**54381-5 FIELD ASS'Y (INCLUDES)
MOTOR BRUSH (2)
BRUSH SPRING (2)
BRUSH HOLDER (1)
54152-3 SWITCH**

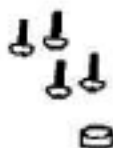


543757?

54386 GASKET SET



**54374-2 FAN COVER (INCLUDES)
54386 GASKET SET**



Ref #	Part	Description	Comments	Qty
1	27165	IMPELLER		
2	27171	GASKET		
3	53238-24	SCREW PACKAGE		
4	53238-25	SCREW PACKAGE		
5	54152-3	SWITCH ASSEMBLY		
6	54363-3	MOTOR ASSEMBLY - PKGD		
7	54374-2	FAN COVER - PACKAGED		
8	54375-1	SCROLL ASSY - PKG		
9	54379-6	MOTOR ASSEMBLY - PKGD		
10	54386	GASKET		
11	54406	PLUG- PACKAGE 10		
12	54413	PACKAGE-5 HEX JAM NUT		
13	54472-1	BRUSH HOLDER & BRUSH ASSY		



54308-3 CREVICE TOOL



54505-1 DUSTING BRUSH



54506-1 UPHOLSTERY NOZZLE



13719-3 STRAIGHT WAND

38403 HARDWARE PKG.

- 1) SCREW**
- 1) NUT**
- 1) SNAP PIN**
- 4) BAG SCREW**

Ref #	Part	Description	Comments	Qty
1	13719-3	WAND - STRAIGHT		
2	54308-3	TOOL - CREVICE		
3	54505-1	DUSTING BRUSH - PACKAGED		
4	54506-1	UPHOLSTERY NOZZLE ASSEMBL		