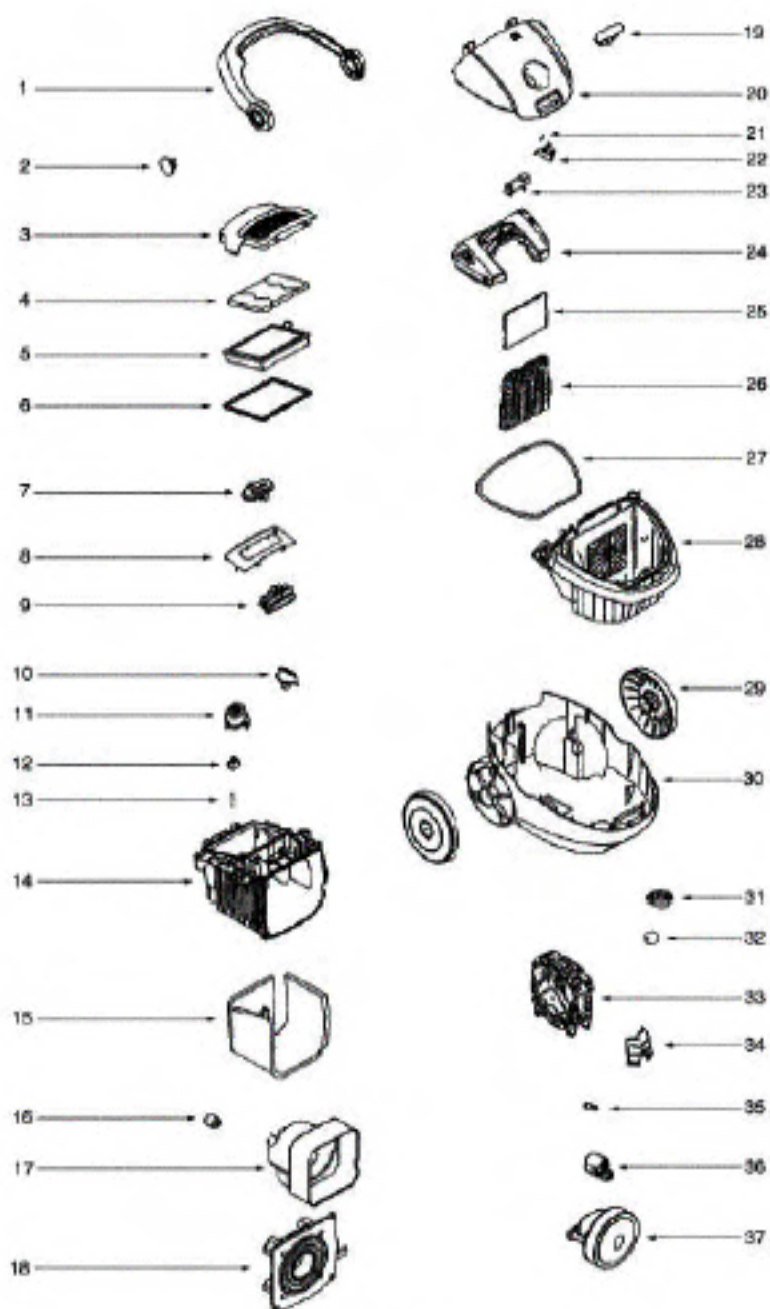
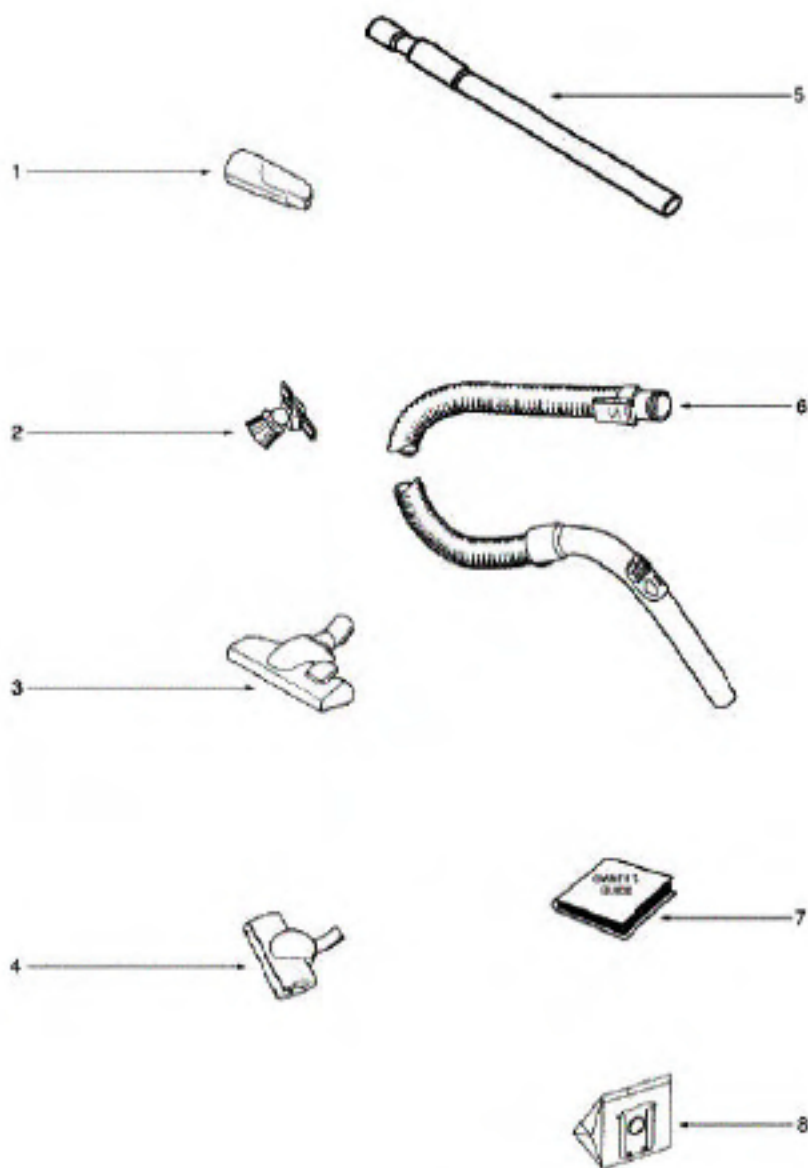


PARTS - EL6985B



## PARTS - EL6985B

| Ref # | Part       | Description              | Comments | Qty |
|-------|------------|--------------------------|----------|-----|
| 1     | 1130550-03 | HANDLE CPL               |          |     |
| 2     | 1130511-02 | PIN - HANDLE             |          |     |
| 3     | 1130509-00 | LID - FILTER             |          |     |
| 4     | 1130529-01 | ABSORBENT - FILTER LID   |          |     |
| 5     | EL012      | HEPA FILTERS             |          |     |
| 6     | 2192645-02 | SEALING                  |          |     |
| 7     | 1130512-04 | SLIDER                   |          |     |
| 8     | 1130515-15 | DISPLAY                  |          |     |
| 9     | 1131175-51 | PCB                      |          |     |
| 10    | 1130514-12 | PEDAL - ON/OFF           |          |     |
| 11    | 1130513-05 | PEDAL - CORD WINDER      |          |     |
| 12    | 1050326-03 | SWITCH - POWER           |          |     |
| 13    | 61403-1    | SPRING - PKGD            | Pkg of 5 |     |
| 14    | 1130502-03 | HOUSING - MOTOR          |          |     |
| 15    | 1130521-01 | ABSORBENT                |          |     |
| 16    | 1050808-01 | SUPPORT - MOTOR          |          |     |
| 17    | 1130517-02 | HOOD - MOTOR             |          |     |
| 18    | 1130516-01 | SEAL - MOTOR             |          |     |
| 19    | 1130527-34 | LID - CATCH              |          |     |
| 20    | 2193186-01 | LID - FRONT              |          |     |
| 21    | 61415-1    | FLAP SPRING - PKGD       | Pkg of 5 |     |
| 22    | 1130523-02 | DEVICE - SAFETY          |          |     |
| 23    | 117966-02  | INDICATOR CPL            |          |     |
| 24    | 1130522-02 | HOLDER - DUST BAG        |          |     |
| 25    | 1130535-01 | FILTER - MOTOR           |          |     |
| 26    | 1130538-01 | HOLDER - MOTOR FILTER    |          |     |
| 27    | 115857-04  | SEAL                     |          |     |
| 28    | 1130500-10 | MODULE - DUST BAG        |          |     |
| 29    | 1130506-01 | WHEEL - REAR             |          |     |
| 30    | 2191360-76 | BOTTOM PART CPL          |          |     |
| 31    | 1096042-03 | WHEEL SUPPORT            |          |     |
| 32    | 1129038-01 | FRONT WHEEL CPL          |          |     |
| 33    | 2198341-84 | CORDWINDER CPL           |          |     |
| 34    | 1130526-22 | AREA - CABLE RECESS      |          |     |
| 35    | 62109-2    | ELECTROLUX SCREW PACKAGE |          |     |
| 36    | 1130909-01 | SUSPENSION - REAR DOM    |          |     |
| 37    | 63160      | MOTOR ASSY - PACKAGED    |          |     |



## ACCESSORIES - EL6985B

| Ref # | Part        | Description              | Comments         | Qty |
|-------|-------------|--------------------------|------------------|-----|
| 1     | 1098534-01  | TELESCOPIC CREVICE       |                  |     |
| 3     | 2190735-07  | S/MO NOZZLE              |                  |     |
| 4     | 2192334-05  | TURBO NOZZLE             |                  |     |
| 5     | 1099071-08  | TELESCOPIC WAND          |                  |     |
| 6     | 39840       | HOSE ASSEMBLY            |                  |     |
| 8     | EL200B      | ELECTROLUX S BAG CLASSIC |                  |     |
| 2     | 1099100-01  | COMBO NOZZLE             |                  |     |
|       | 1099183-01  | CADDY                    | Not illustrated. |     |
| 7     | 73400       |                          |                  |     |
|       | 15821       |                          |                  |     |
|       | SF119262-74 |                          |                  |     |
|       | 15812       |                          |                  |     |
|       | 2192112-01  | HOSE ASSEMBLY            |                  |     |

E-2193423-01 Belt for Turbo Nozzle