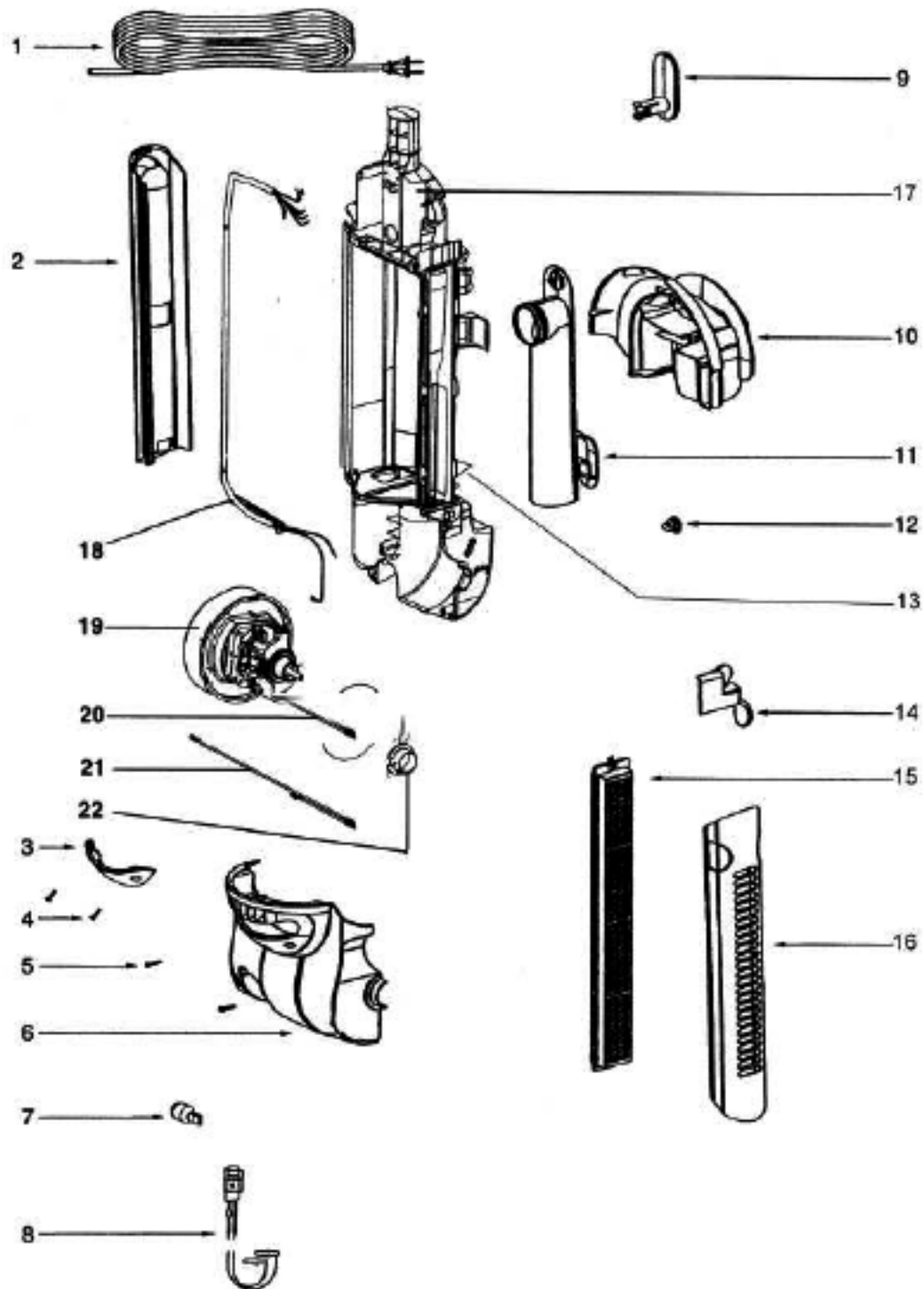


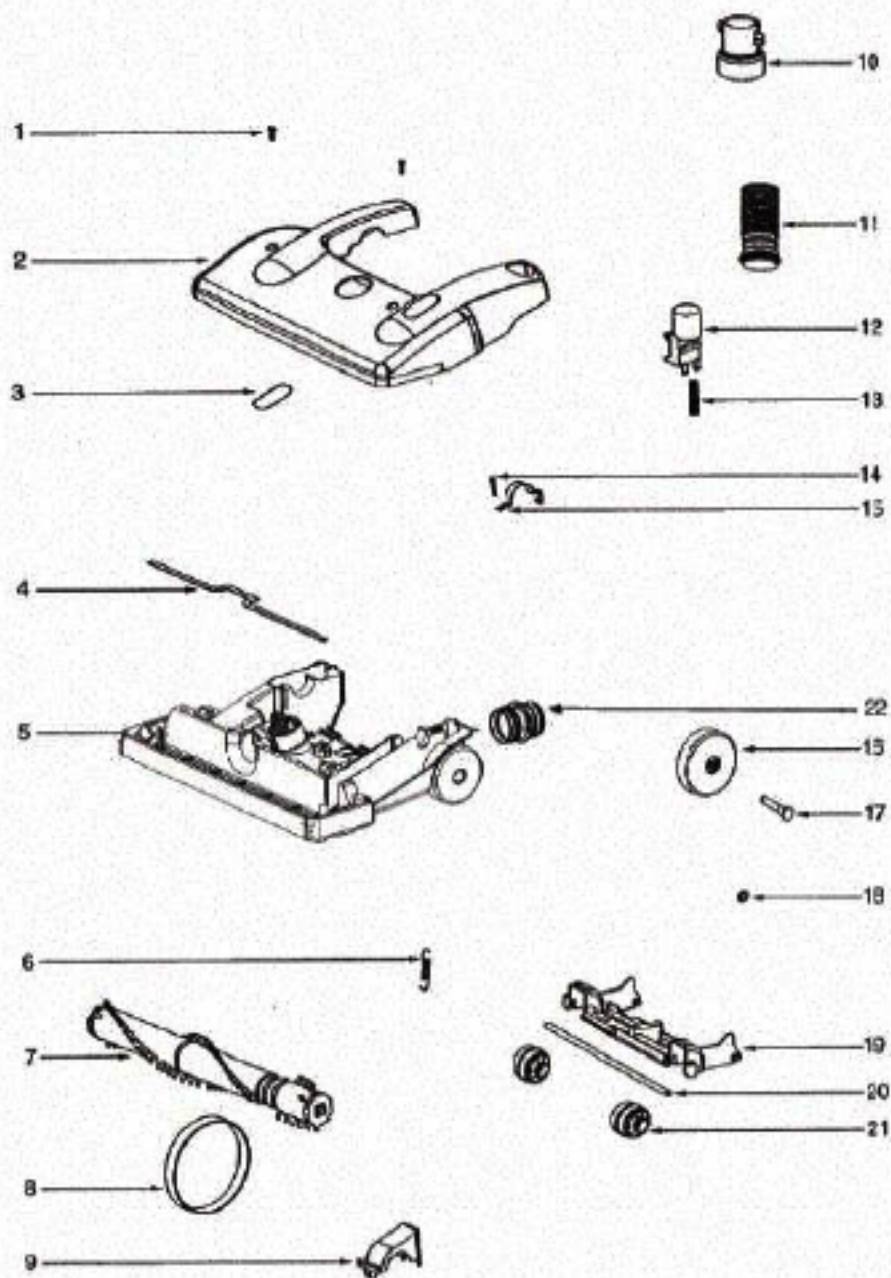
Handle and Bag Cover - HP5505A

Ref #	Part	Description	Comments	Qty
1	39435-1	HANDLE ASSEMBLY		
2	63162	BAG COVER ASSEMBLY - PKGD		
3	39455-1	SWITCH - ROCKER		
4	60160	SCREW PACKAGE 10		
5	71116-4	TOP HOUSING ASSEMBLY	Includes items 5 & 7.	
6	39357-355N	LATCH		
7	46713-5	TIE - CABLE (PURCHASED)		
8	71114-1	AIR DUCT ASSEMBLY		
9	60192-1	WIRE SPLICE 5		
10	72224-1	FOAM - SOUND		
11	70726-1	GASKET - BAG COVER	Not pictured.	



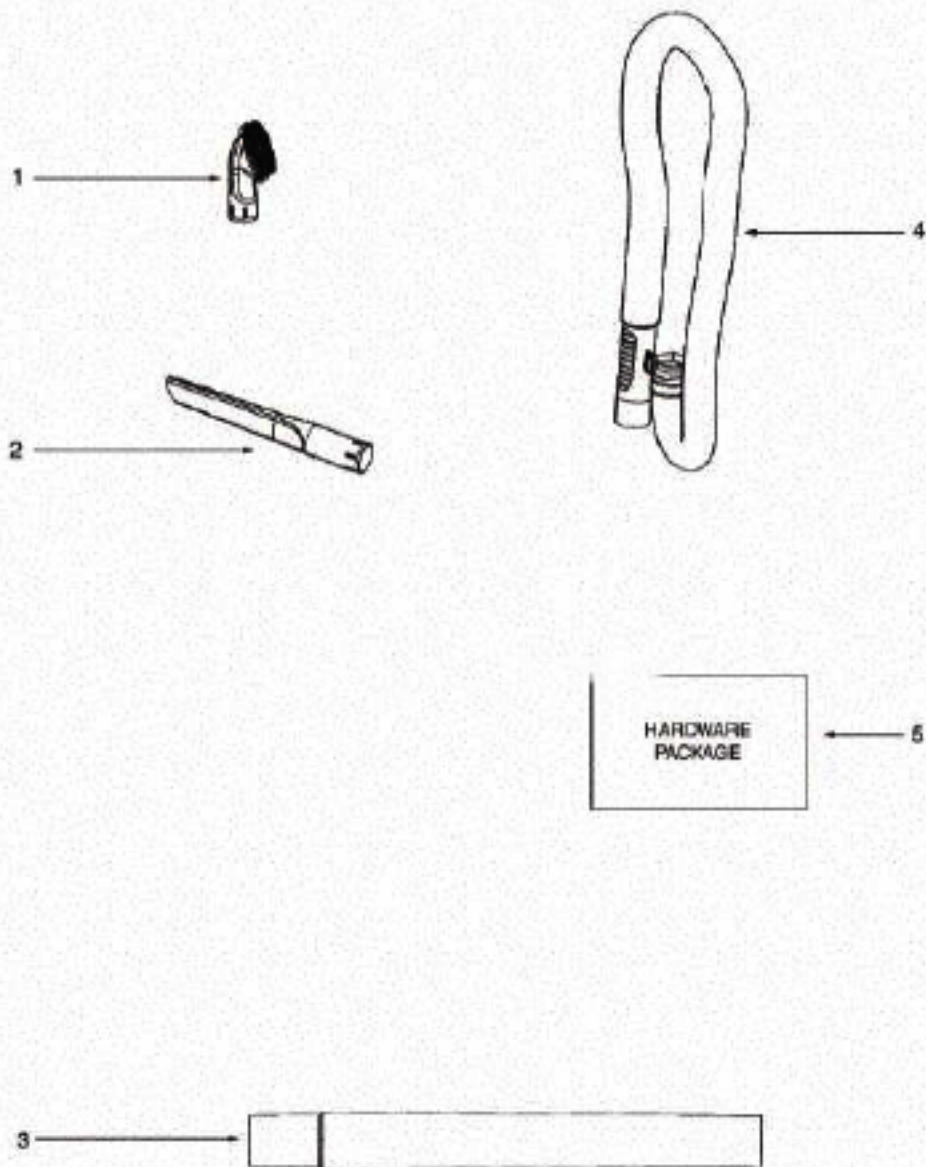
Main Body - HP5505A

Ref #	Part	Description	Comments	Qty
1	39585-4	SUPPLY CORD & TERMINAL ASS		
2	15692-357N	HOUSING - EXTENSION TUBE		
3	28466A-396P	LENS - MOTOR COVER		
4	53238-8	SCREW PACKAGE	Pkg of 10	
5	53238-27	SCREW PACKAGE	Pkg of 10	
6	63138-1	MOTOR COVER ASSY - PACKAG		
7	57940-3	LAMP - HEADLIGHT		
8	38828B-4	HEADLIGHT ASSEMBLY		
9	70864A-119N	HOOK - CORD		
10	71113A-1	CARRY HANDLE ASSEMBLY	Includes item 9.	
11	28478-2	REAR AIR TUBE ASSEMBLY	Includes item 12.	
12	61448-1	FASTENER PACKAGE		
14	61984	HEPA FILTER - STYLE GE-1		
15	71587-1	FILTER COVER & GRAPHICS A		
16	71587-1	FILTER COVER & GRAPHICS A		
18	71237-2	UPPER CORD ASSEMBLY		
19	62376-1	MOTOR ASSEMBLY - CARTONED		
20	74584	SHIELD - MOTOR		
21	39252-9	THERMOSTAT & TERMINAL ASS		
22	27552B	GROMMET		
13	71177			
	39356A-119N	CLIP - TOOL	Not illustrated.	
	71569-119N	CLIP - ADAPTER	Not illustrated.	
	73699	MOTOR SUPPORT - RUBBER	Not illustrated.	
17	71094B-2			



Base and Hood - HP5505A

Ref #	Part	Description	Comments	Qty
1	53238-44	SCREW PACKAGE		
2	63135-4	HOOD ASSEMBLY - PACKAGED	Includes item 3	
3	28469-313N	LENS - BELT VIEW		
4	58506-1	GASKET		
5	63137-2	BASE ASSEMBLY - PACKAGED	Includes items 6,16,17,18,19,20,21,22,23 & 24	
6	54943	SPRING PACKAGE	Pkg of 10	
7	60844-5	12" DISTURBULATOR ASSY -		
8	61120A	BELT PRG ASSY-STYLE U EXT		
9	54376-2	BELT CAP & GASKET - PACKA		
10	28496-119N	CUFF- HOSE		
11	38479-4	HOSE - COMPRESSION (PURCH		
12	28468-355N	RELEASE - HANDLE		
13	60133-1	COMPRESSION SPRING - PACK		
14	53238-27	SCREW PACKAGE	Pkg of 10	
15	38420-2	CLAMP		
16	61875	WHEEL/BUSHING PACKAGE		
17	38590A	AXLE - REAR		
18	54432-2	PACKAGE - RETAINING RING		
19	14993C-119N	CARRIAGE - WHEEL		
20	71551-1	FRONT AXLE		
21	39173A-119N	WHEEL - FRONT		
22	28243A-316N	ADAPTER - BASE		
23	28467 A-355N	OPERATOR - HEIGHT ADJUSTM	Height Adjustment Knob (Not illustrated.)	
24	73432	BUSHING - AXLE	Not illustrated.	



Accessories - HP5505A

Ref #	Part	Description	Comments	Qty
1	60990-3	COMBINATION BRSH BRSTLD-C		
2	28497-355N	NOZZLE - CREVICE		
3	71119-1	EXTENSION TUBES ASSEMBLY		
4	61440-5	HOSE ASSEMBLY - CARTONED		
5	71118A	PACKAGE - HARDWARE		
7	61983	PAPER BAG PACKAGE-STYLE G	Not pictured.	
8	61455-1	FILTER - MOTOR	Not pictured.	