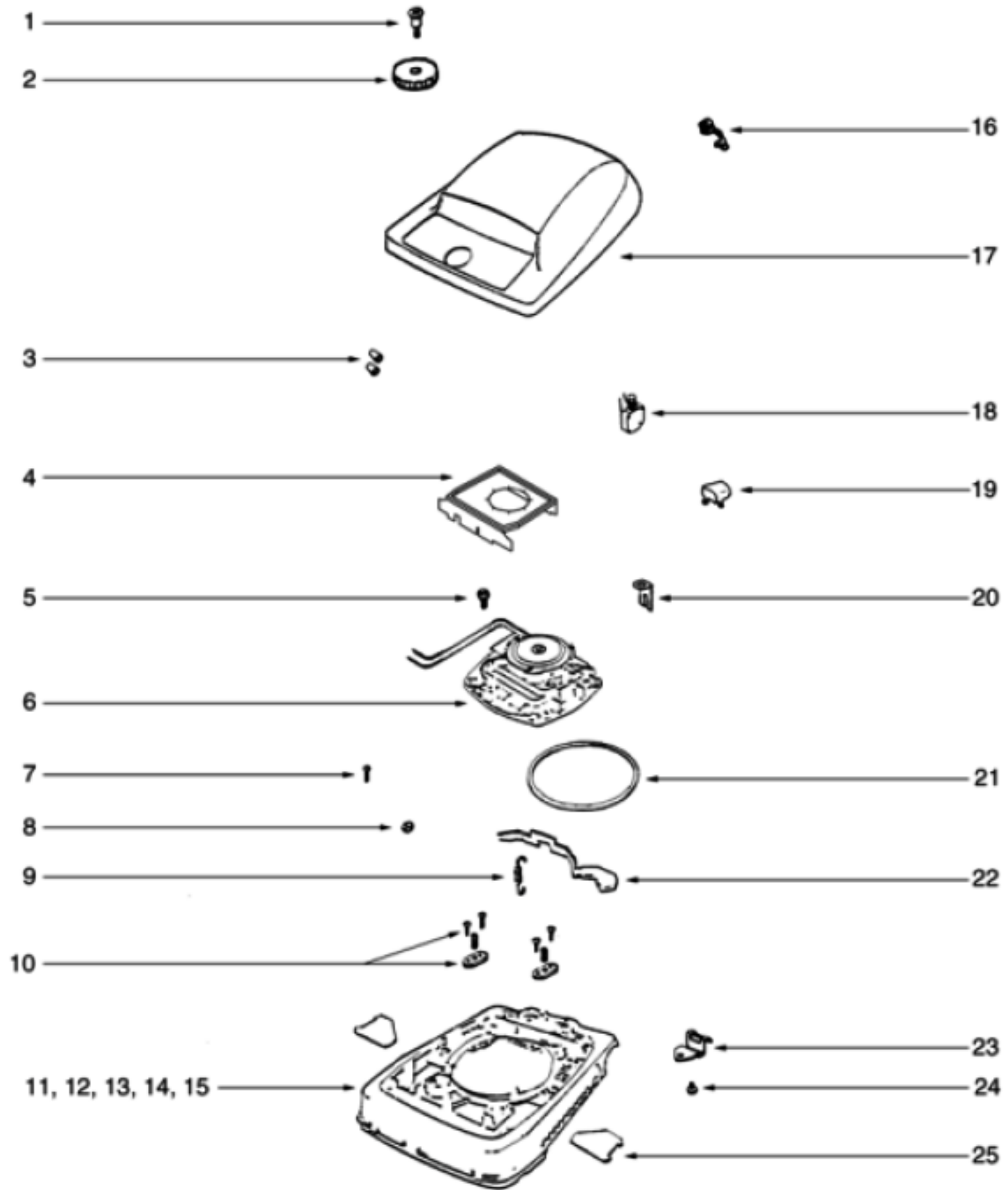


## HANDLE - S634A

| Ref # | Part      | Description               | Comments | Qty |
|-------|-----------|---------------------------|----------|-----|
| 1     | 25989A-5  | HANDLE ASSEMBLY (UPPER)   |          |     |
| 2     | 36984-3   | HANDLE ASSEMBLY - LOWER   |          |     |
| 3     | 53198-1   | HANDLE SCREW ASSY PACKAGE |          |     |
| 4     | 27382-10  | CORD - LOW LEAD (18 GA)   |          |     |
| 5     | 27137-2SV | HANDLE SOCKET ASSEMBLY    |          |     |
| 6     | 53213-5   | NUTS - PACKAGE 10         |          |     |
| 7     | 53145     | BOLT PACKAGE (10)         |          |     |
| 8     | 25988-3   | CONNECTOR - HANDLE TUBE   |          |     |
| 9     | 53238-13  | SCREW PACKAGE             |          |     |
| 10    | 53080-4   | PIN - SNAP PACKAGE (5)    |          |     |

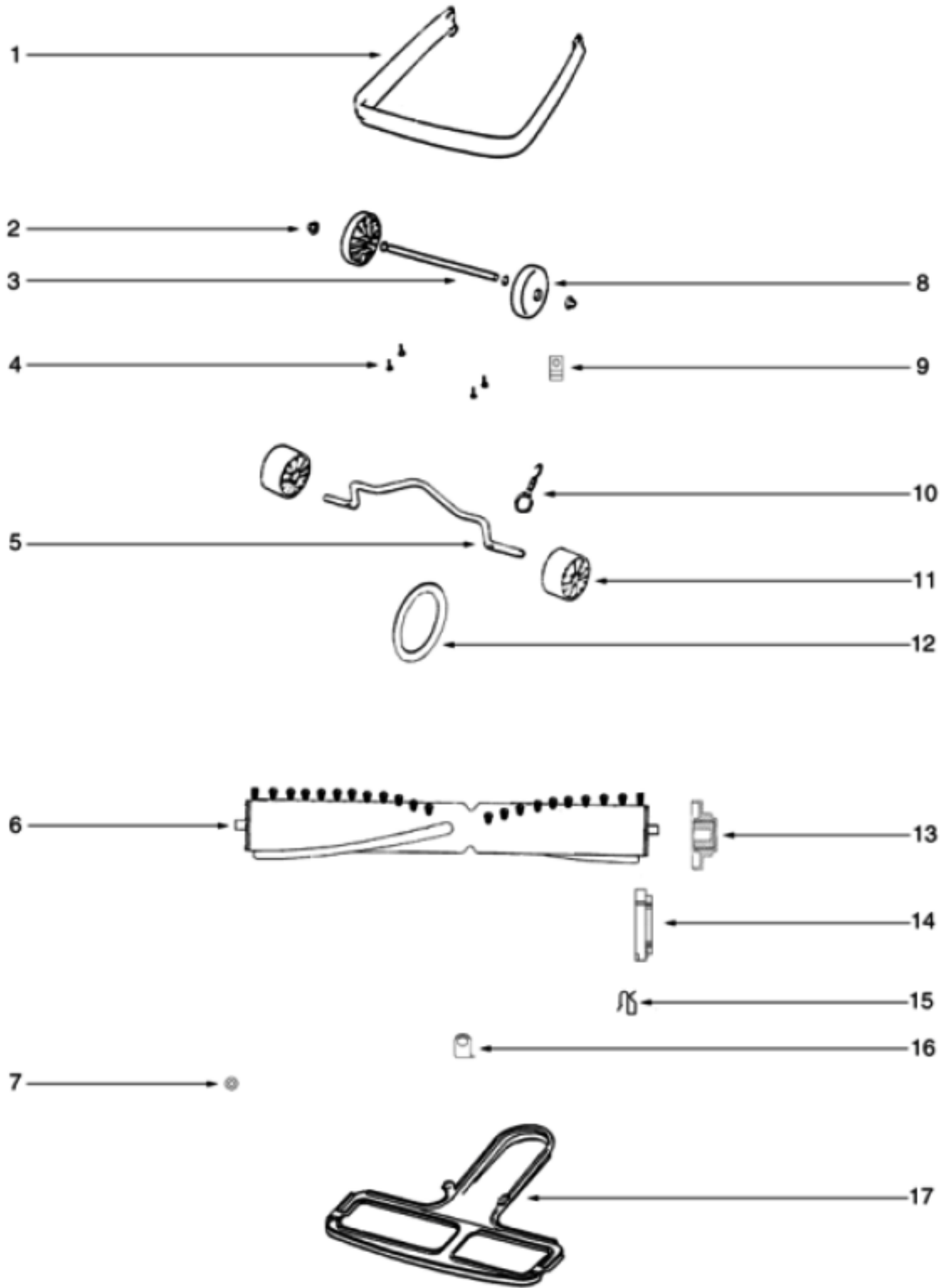
HOOD BASE - S634A



## HOOD BASE - S634A

| Ref # | Part     | Description                  | Comments | Qty |
|-------|----------|------------------------------|----------|-----|
| 1     | 53143    | SCREW PACKAGE (10)           |          |     |
| 2     | 38053-3  | KNOB ASSEMBLY                |          |     |
| 3     | 60192-1  | WIRE SPLICE 5                |          |     |
| 4     | 37676ASV | SEPARATOR ASSEMBLY           |          |     |
| 5     | 53238-14 | SCREW PACKAGE                |          |     |
| 6     | 53349-7  | MTR 1 SP 5.0 AM (53349-4)    |          |     |
| 7     | 54669-2  | SCREW PACKAGE                |          |     |
| 8     | 53213-5  | NUTS - PACKAGE 10            |          |     |
| 9     | 53097    | SPRING - FOOT PEDAL PKG (    |          |     |
| 10    | 53140    | CLAMP & SCREW ASSY PKG       |          |     |
| 11    | 54004-5  | BASE ASSEMBLY - CARTONED     |          |     |
| 12    | 24964A-1 | CAM (RIGHT)                  |          |     |
| 13    | 24965A-1 | CAM (LEFT)                   |          |     |
| 14    | 53118    | RIVET - SHOULDER PACKAGE     |          |     |
| 15    | 53133    | STL WASHERS-PKG (48495 (NLA) |          |     |
| 16    | 53089-1  | BUSHING & STRAIN RELIEF P    |          |     |
| 17    | 54314-8  | HOOD & GRAPHICS ASSY - PK    |          |     |
| 18    | 13738-5  | SWITCH ASSEMBLY              |          |     |
| 19    | 26808-3  | BUTTON - SWITCH              |          |     |
| 20    | 37989    | CLIP - SWITCH                |          |     |
| 21    | 30517    | GASKET - MOTOR SEAL          |          |     |
| 22    | 24834A-3 | PEDAL - FOOT                 |          |     |
| 23    | 37034    | SPRING - ADAPT RETAINER      |          |     |
| 24    | 53238-11 | SCREW PACKAGE                |          |     |
| 25    | 36263    | COVER - WHEEL                |          |     |

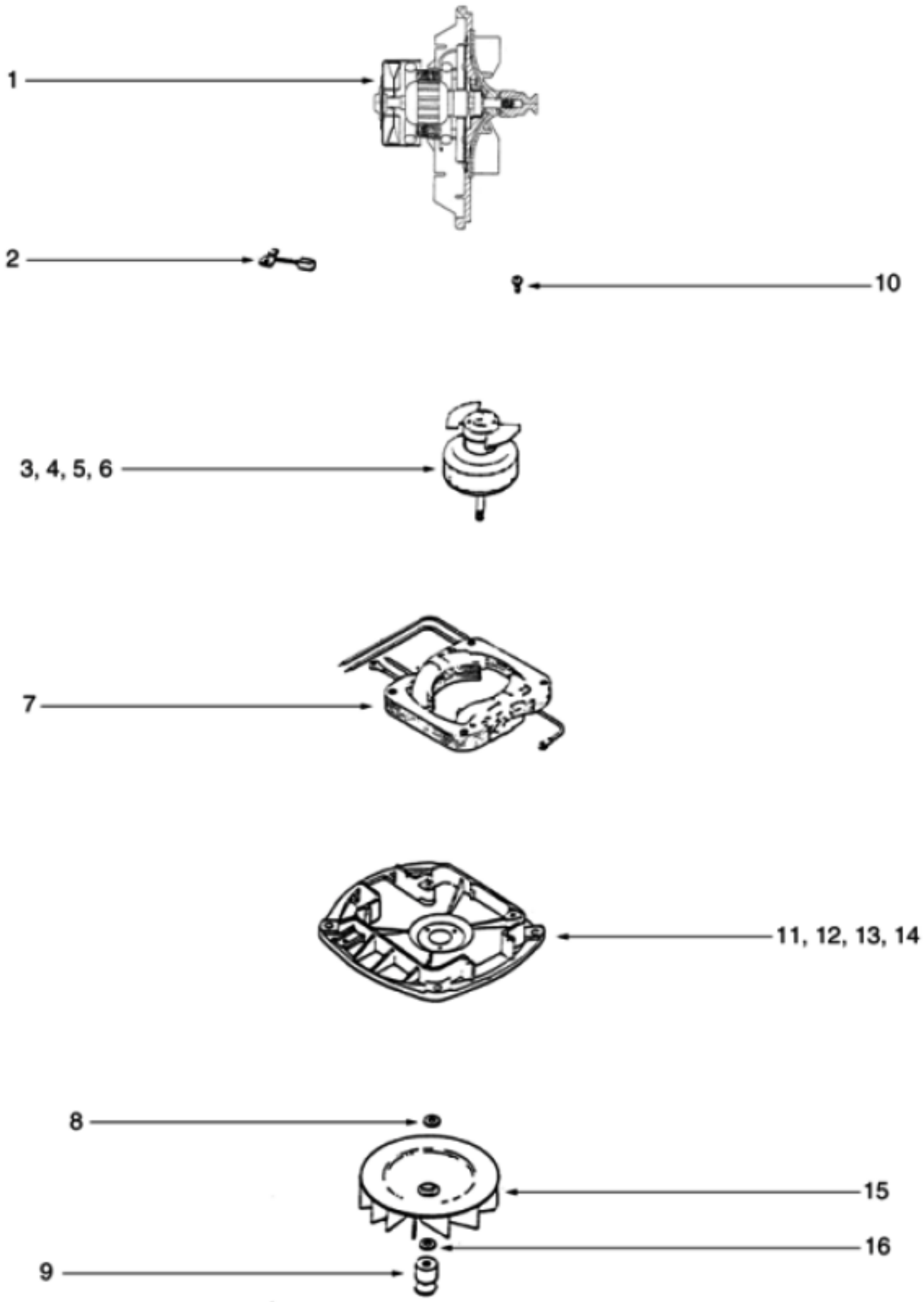
BRUSHROLL - S634A



## BRUSHROLL - S634A

| Ref # | Part     | Description                | Comments | Qty |
|-------|----------|----------------------------|----------|-----|
| 1     | 36342-20 | GUARD - FURNITURE          |          |     |
| 2     | 53121    | PUSH NUT PACKAGE (10)      |          |     |
| 3     | 47562    | AXLE - REAR                |          |     |
| 4     | 53238-11 | SCREW PACKAGE              |          |     |
| 5     | 35947A   | AXLE - FRONT               |          |     |
| 6     | 54104-1  | DISTURBULATOR REPLACEMENT  |          |     |
| 7     | 54560    | WASHER PACKAGE             |          |     |
| 8     | 35858-2  | WHEEL - REAR (35858- (NLA) |          |     |
| 9     | 53111    | CLIP PACKAGE (5)           |          |     |
| 10    | 53076-2  | SPRING & AXLE PACKAGE (6)  |          |     |
| 11    | 35859A-1 | WHEEL - FRONT              |          |     |
| 12    | 52100A   | BELT PKG ASSY (UPRIGHT)    |          |     |
| 13    | 38138    | CAP & BEARING ASSEMBLY     |          |     |
| 14    | 26059A   | CAP - COVER                |          |     |
| 15    | 55015    | CLIP - WIRE                |          |     |
| 16    | 37590-1  | BRACKET - BUSHING          |          |     |
| 17    | 25922-1  | BOTTOM PLATE ASSEMBLY      |          |     |

MOTOR - S634A

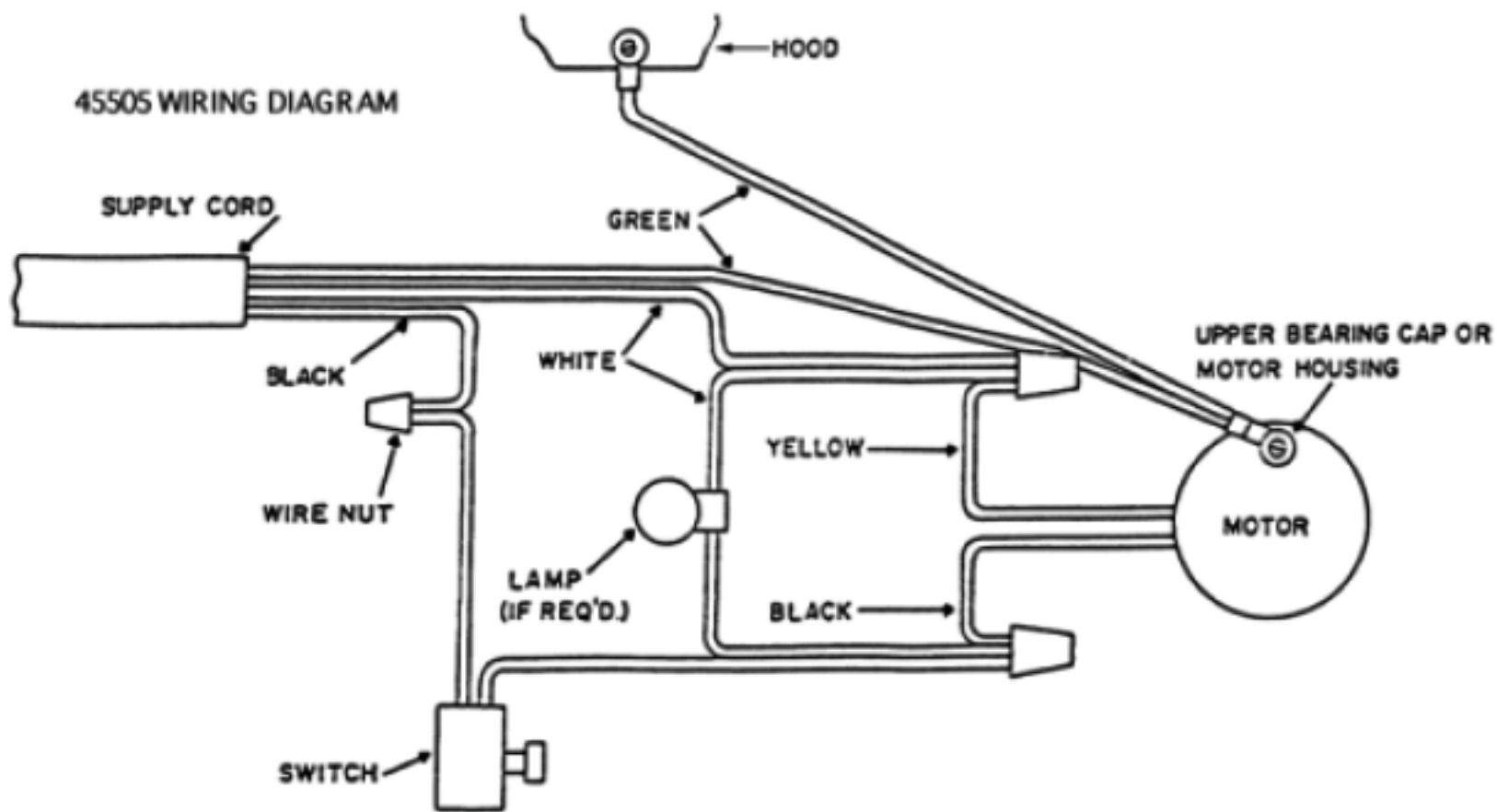
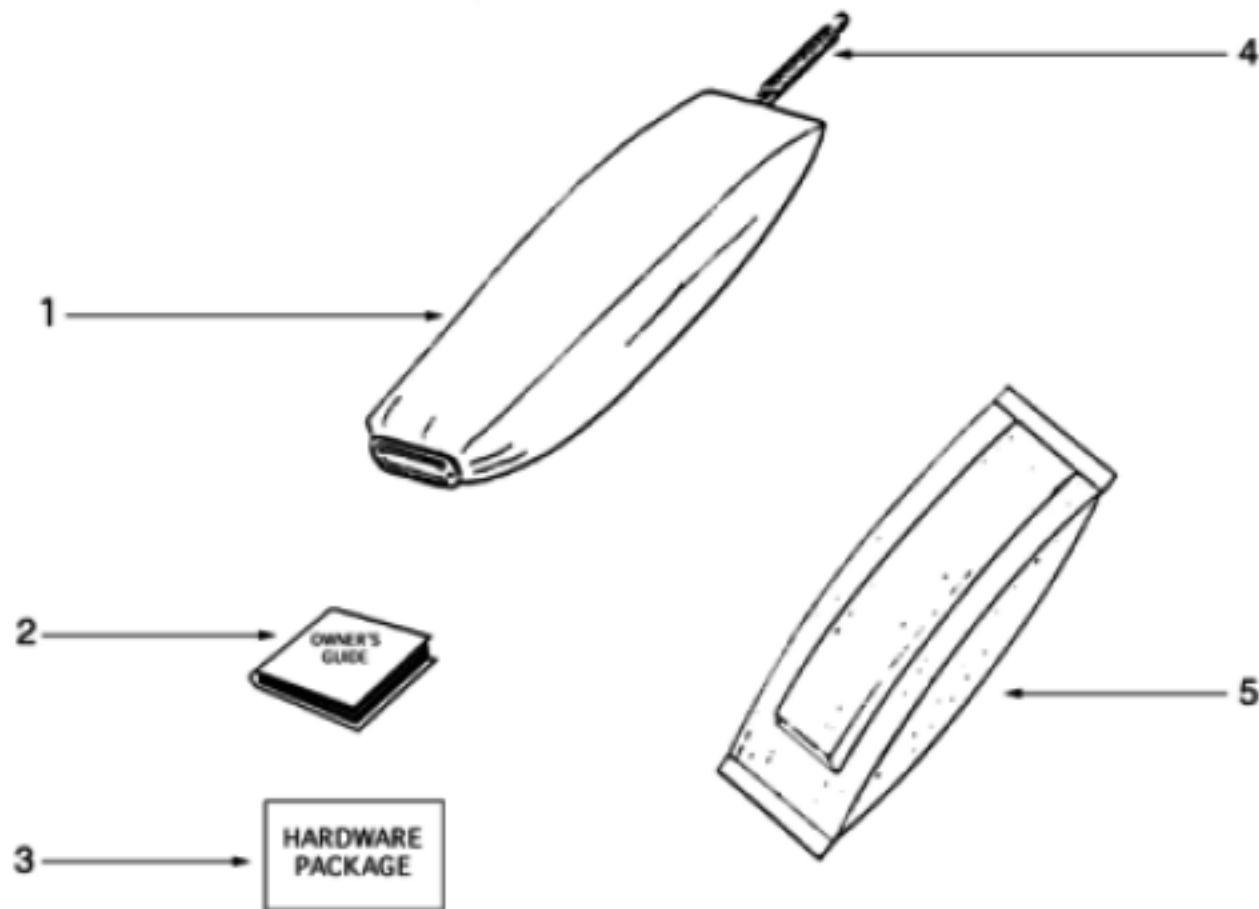


## MOTOR - S634A

| Ref # | Part      | Description                    | Comments | Qty |
|-------|-----------|--------------------------------|----------|-----|
| 1     | 53349-7   | MTR 1 SP 5.0 AM (53349-4       |          |     |
| 2     | 25172A-1  | MOTOR BRUSH ASSEMBLY           |          |     |
| 3     | 53470-3   | ARMATURE - CARTONED            |          |     |
| 4     | 53088-4   | BALL BEARING PKG (53088- (NLA) |          |     |
| 5     | 26136     | FAN                            |          |     |
| 6     | 54172     | FAN END HSG                    |          |     |
| 7     | 26520-2SV |                                |          |     |
| 8     | 53148     | WASHER - FAN PACKAGE (10)      |          |     |
| 9     | 49507-1   | PULLEY - MOTOR D (49507        |          |     |
| 10    | 53131-1   | SCREW PACKAGE (10)             |          |     |
| 11    | 54171-1   | MOTOR BASE ASSEMBLY            |          |     |
| 12    | 54412-1   | BEARING RETAINER ASSY-W/L      |          |     |
| 13    | 53187-1   | RIVET PACKAGE                  |          |     |
| 14    | 12988-1   | FAN BLOWER - MOTOR             |          |     |
| 15    | 54811     | FAN WASHER - PACKAGED          |          |     |



BAG & WIRING DIAGRAM 45505 - S634A



BAG & WIRING DIAGRAM 45505 - S634A

| Ref # | Part     | Description              | Comments | Qty |
|-------|----------|--------------------------|----------|-----|
| 1     | 53977-29 | BAG ASSEMBLY - PACKAGED  |          |     |
| 2     | 71383    |                          |          |     |
| 3     | 57062B   | HARDWARE PACKAGE         |          |     |
| 4     | 47722    | SPRING - BAG             |          |     |
| 5     | 52320A   | PAPER BAG PKG ASSY STYLE |          |     |