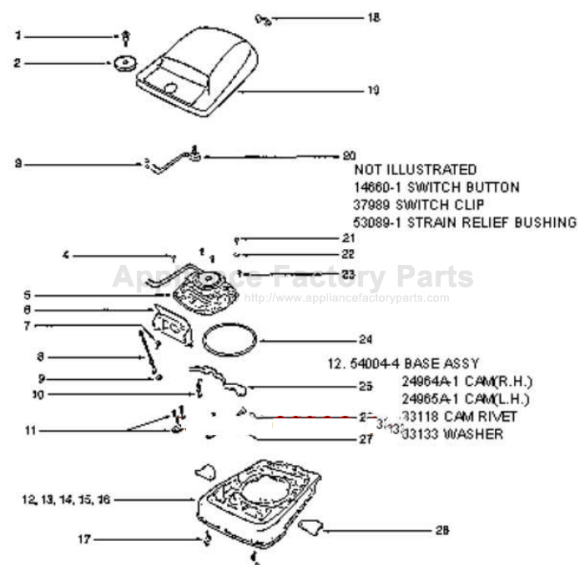


This Owner's Manual is provided and hosted by Appliance Factory Parts.



SANITAIRE S639A Owner's Manual

[Shop genuine replacement parts for SANITAIRE S639A](#)

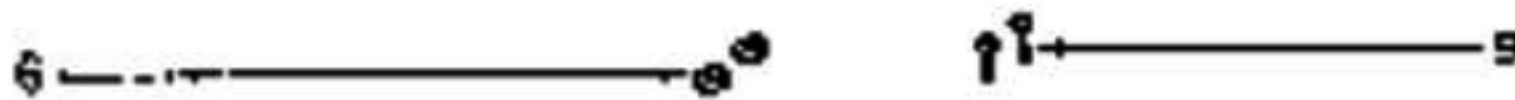
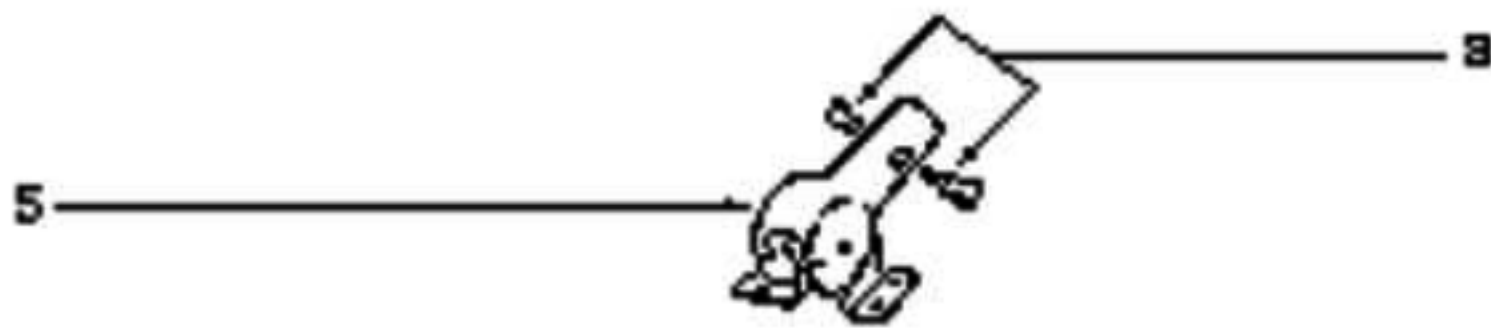
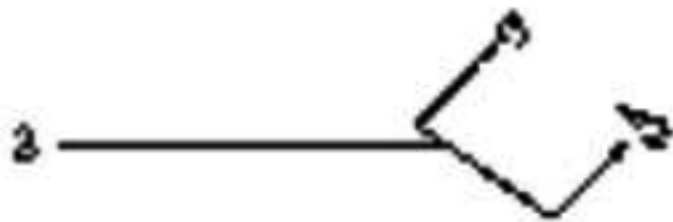
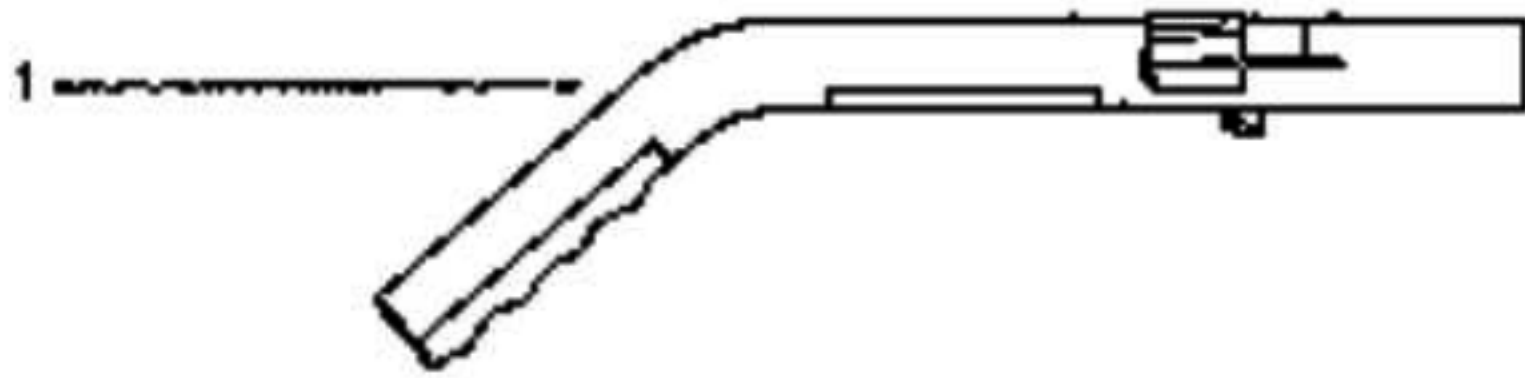


[Find Your SANITAIRE Vacuum Cleaner Parts - Select From 78 Models](#)

----- Manual continues below part list -----

Available Replacement Parts for SANITAIRE S639A

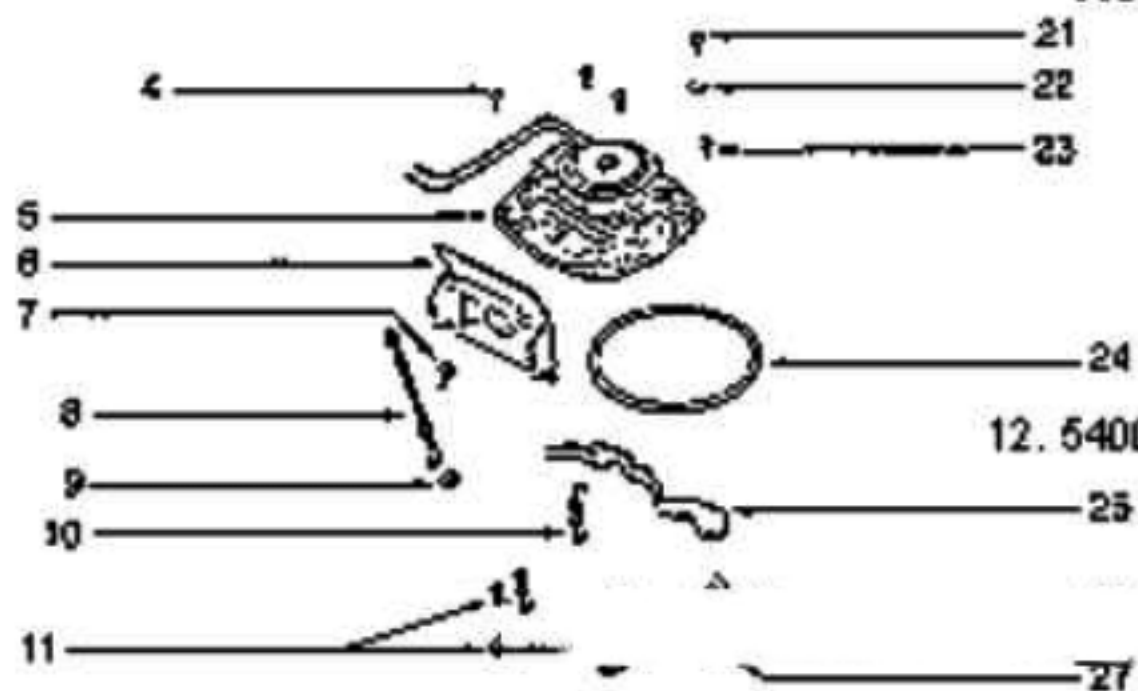
53201	porcelain steel wire cooking grid
E-52320	BAGS, PAPER OEM 3 PACK



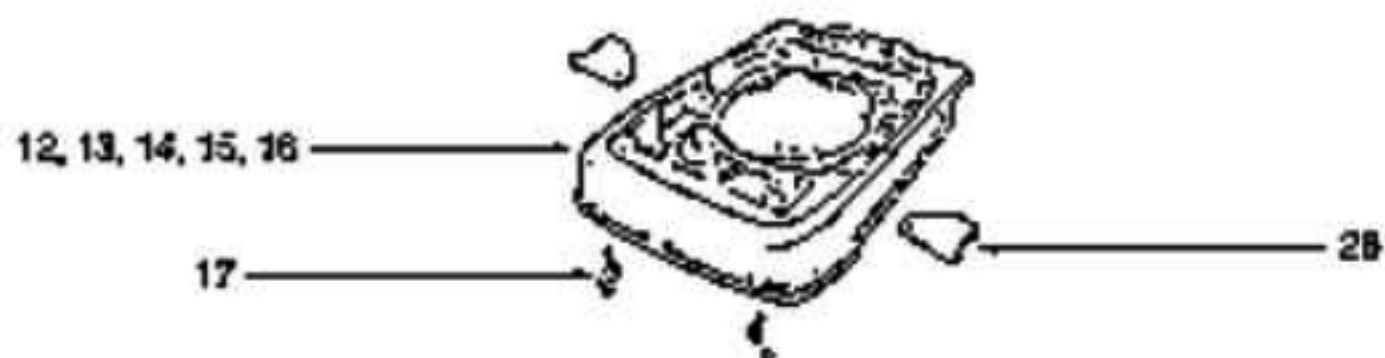
Ref #	Part	Description	Comments	Qty
1	25989A-5	HANDLE ASSEMBLY (UPPER)		
2	27137-4			
3	27382-10	CORD - LOW LEAD (18 GA)		
4	36984-3	HANDLE ASSEMBLY - LOWER		
5	53080-4	PIN - SNAP PACKAGE (5)		
6	53145	BOLT PACKAGE (10)		
7	53198-1	HANDLE SCREW ASSY PACKAGE		
8	53213-5	NUTS - PACKAGE 10		
9	53238-13	SCREW PACKAGE		



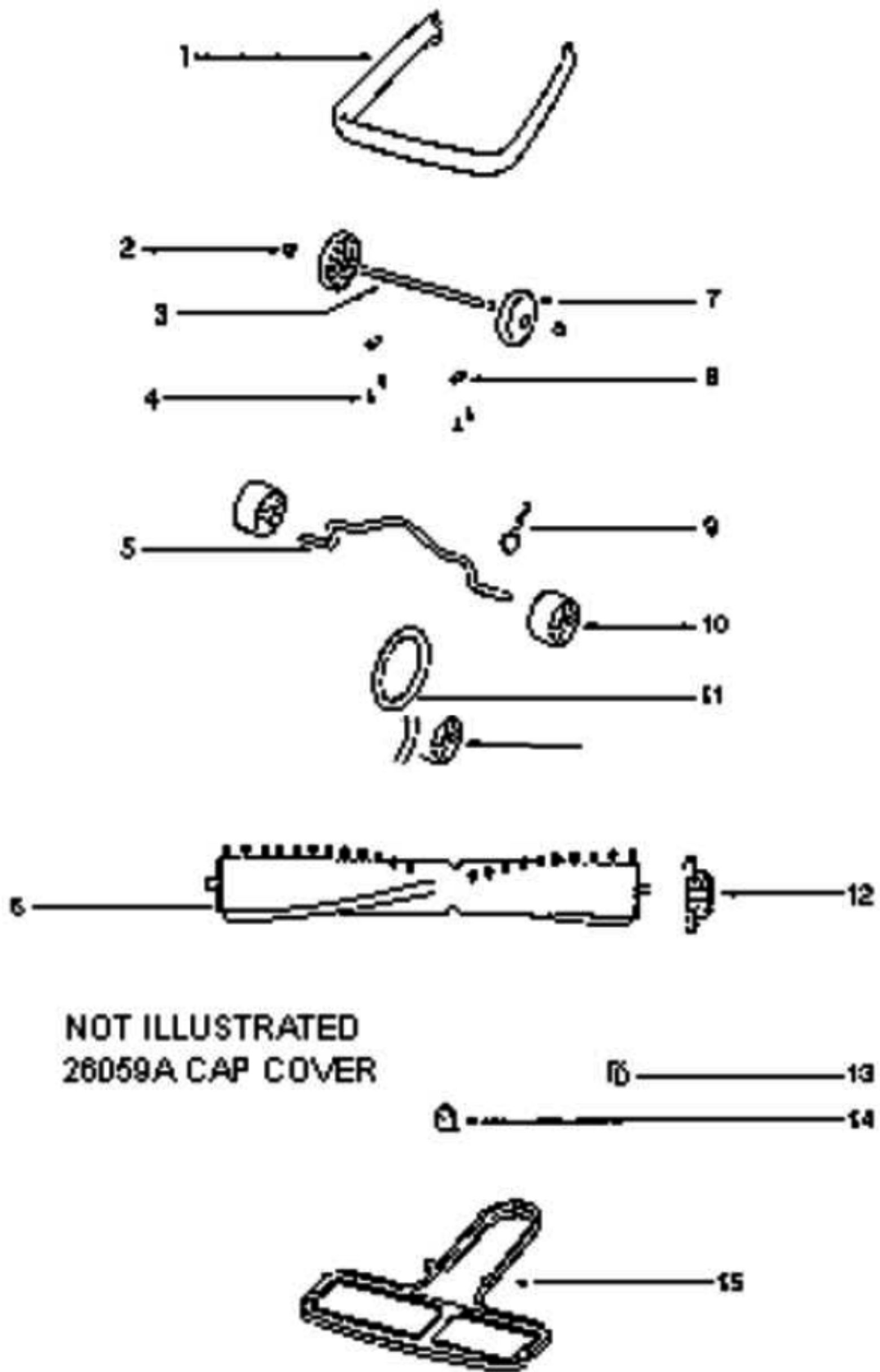
NOT ILLUSTRATED
 14660-1 SWITCH BUTTON
 37989 SWITCH CLIP
 53089-1 STRAIN RELIEF BUSHING



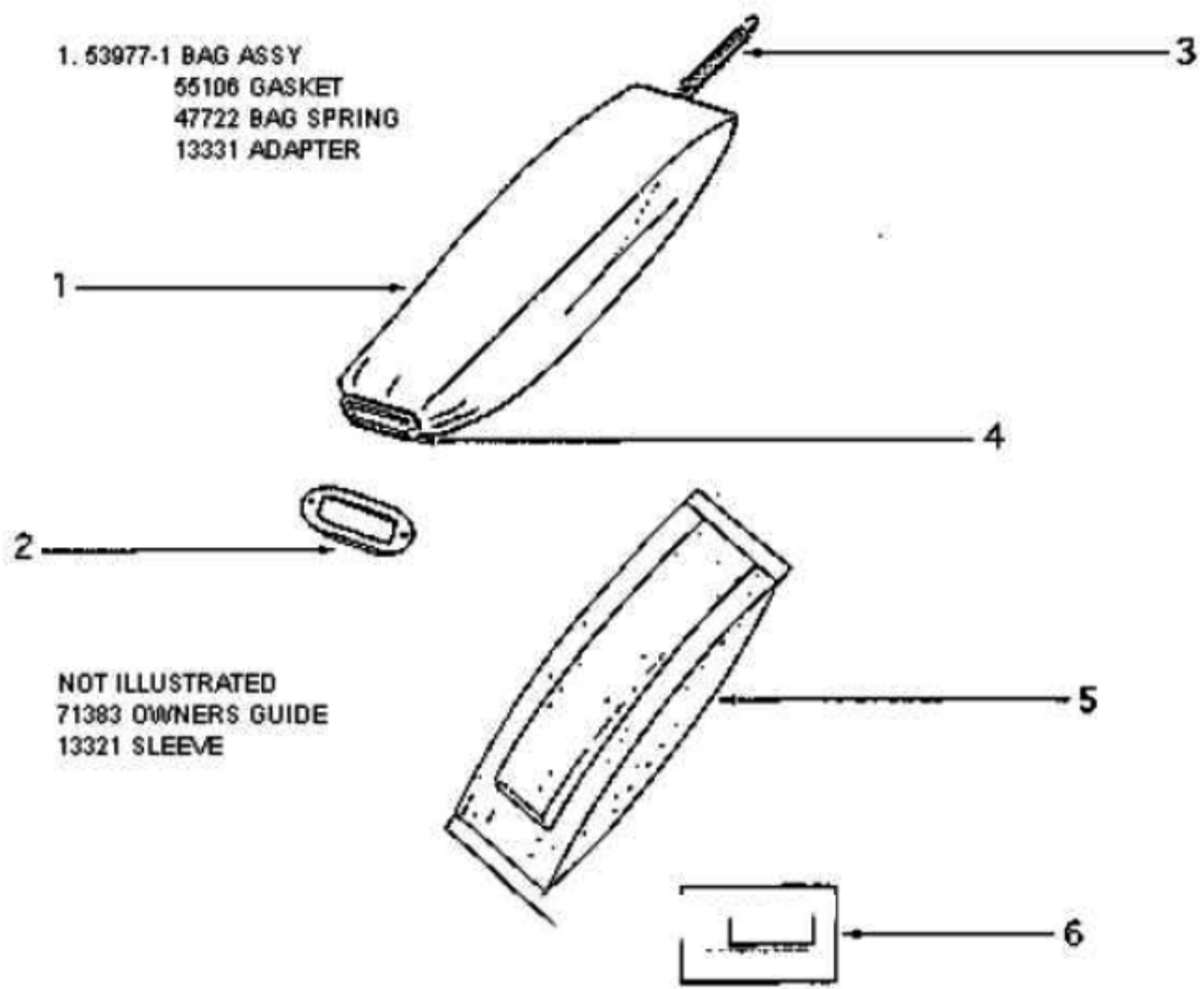
12. 54004-4 BASE ASSY
 24964A-1 CAM(R.H.)
 24965A-1 CAM(L.H.)
 28118 CAM RIVET
 133133 WASHER



Ref #	Part	Description	Comments	Qty
1	13738-5	SWITCH ASSEMBLY		
2	14660-1	BUTTON - SWITCH		
3	24834A-3	PEDAL - FOOT		
4	24964A-1	CAM (RIGHT)		
5	24965A-1	CAM (LEFT)		
6	30517	GASKET - MOTOR SEAL		
7	36263	COVER - WHEEL		
8	37676ASV	SEPARATOR ASSEMBLY		
9	37989	CLIP - SWITCH		
10	38053-1	KNOB ASSEMBLY		
11	53089-1	BUSHING & STRAIN RELIEF P		
12	53097	SPRING - FOOT PEDAL PKG (
13	53117	SPRING - HOOD PACKAGE (10		
14	53118	RIVET - SHOULDER PACKAGE		
15	53133	STEEL WASHERS - PACKAGE 1		
16	53140	CLAMP & SCREW ASSY PKG		
17	53143	SCREW PACKAGE (10)		
18	53160	CABLE CLAMP PACKAGE		
19	53213-5	NUTS - PACKAGE 10		
20	53228-2	SCREWS - PACKAGE 10		
21	53228-3	SCREWS - PACKAGE 10		
22	53238-13	SCREW PACKAGE		
23	53238-14	SCREW PACKAGE		
24	53349-7	MOTOR ASSEMBLY - CARTONED		
25	54004-4	BASE ASSEMBLY - CARTONED		
26	54314-7	HOOD & GRAPHICS ASSY - PK		
27	55296	WIRE & TERMINAL ASSEMBLY		
28	60192-1	WIRE SPLICE 5		



Ref #	Part	Description	Comments	Qty
1	25922-1	BOTTOM PLATE ASSEMBLY		
2	26059A	CAP - COVER		
3	35858-2	WHEEL - REAR		
4	35859A-1	WHEEL - FRONT		
5	35947A	AXLE - FRONT		
6	36342-13	GUARD - FURNITURE		
7	37590-1	BRACKET - BUSHING		
8	38138	CAP & BEARING ASSEMBLY		
9	47562	AXLE - REAR		
10	52100A	BELT PKG ASSY (UPRIGHT)		
11	53076-2	SPRING & AXLE PACKAGE (6)		
12	53121	PUSH NUT PACKAGE (10)		
13	53201	CLAMPS - PACKAGE 10		
14	53238-11	SCREW PACKAGE		
15	54104-1	DISTURBULATOR REPLACEMENT		
16	55015	CLIP - WIRE		



Ref #	Part	Description	Comments	Qty
1	13321			
2	13331			
3	47722	SPRING - BAG		
4	52320A	PAPER BAG PKG ASSY STYLE		
5	53977-1	BAG ASSEMBLY - PACKAGED		
6	55106	GASKET - BAG ADAPTER		
7	57062B	HARDWARE PACKAGE		
8	71383			

Ref #	Part	Description	Comments	Qty
1	12988-1	FAN BLOWER - MOTOR		
2	25172A-1	MOTOR BRUSH ASSEMBLY		
3	26136	FAN		
4	26520-2SV			
5	49507-1	PULLEY - MOTOR DRIVE		
6	53088-4	BALL BEARING - PACKAGE		
7	53131-1	SCREW PACKAGE (10)		
8	53148	WASHER - FAN PACKAGE (10)		
9	53187-1	RIVET PACKAGE		
10	53349-7	MOTOR ASSEMBLY - CARTONED		
11	53470-3	ARMATURE - CARTONED		
12	54171-1	MOTOR BASE ASSEMBLY		
13	54172	MOTOR FAN END HOUSING ASS		
14	54412-1	BEARING RETAINER ASSY-W/L		
15	54811	FAN WASHER - PACKAGED		