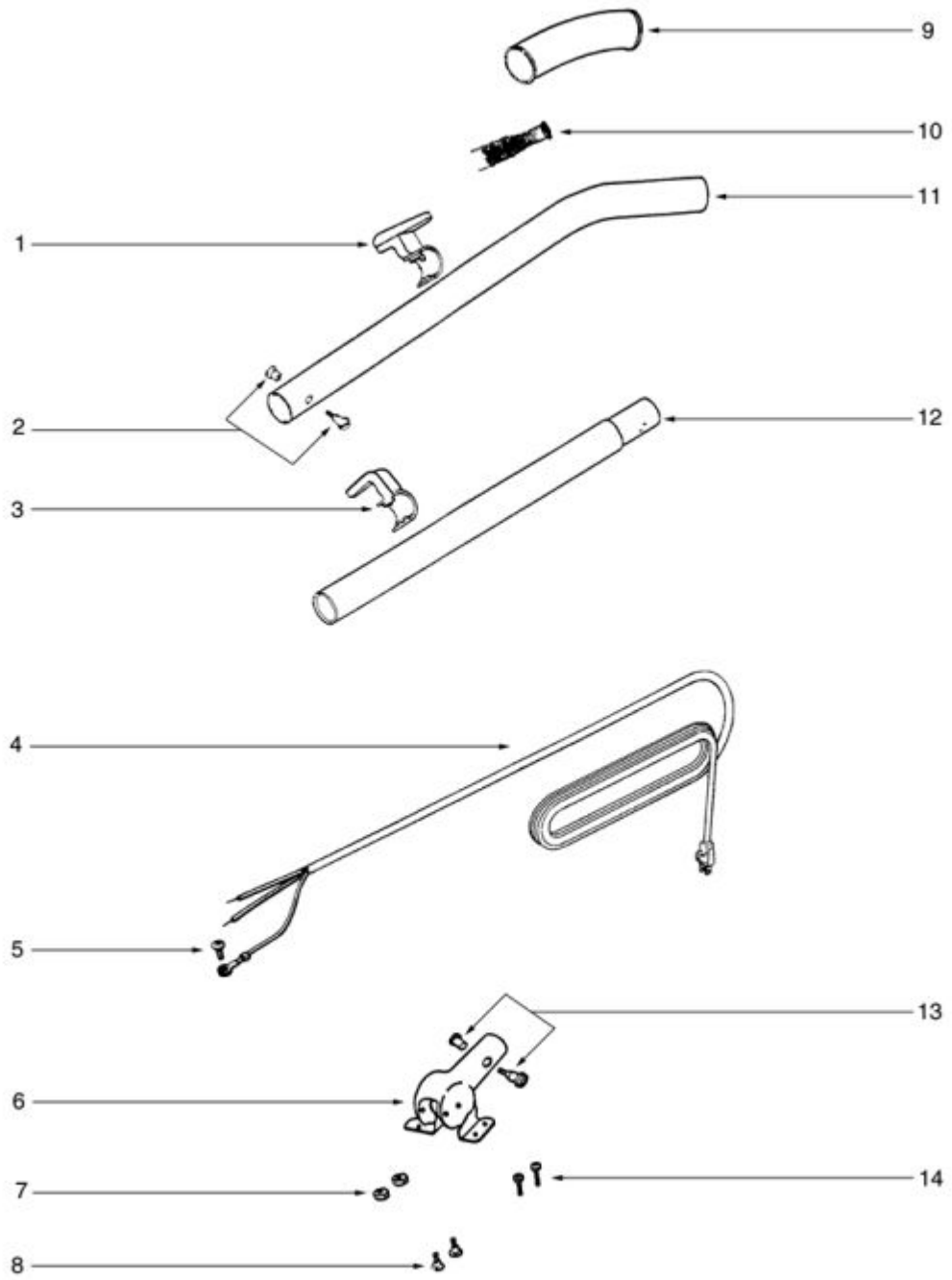


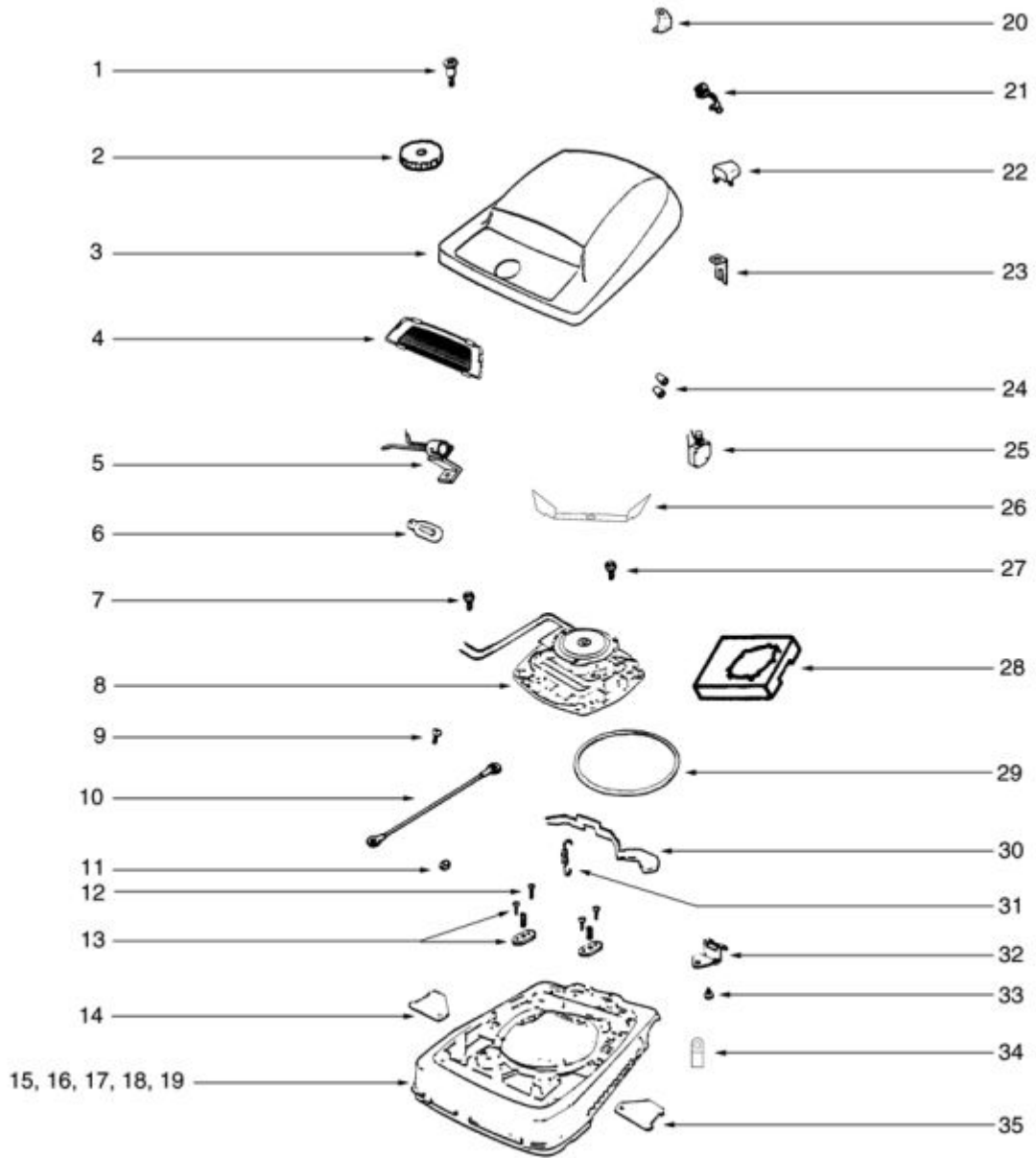
HANDLE - S647B



HANDLE - S647B

Ref #	Part	Description	Comments	Qty
1	E-36965-2	CORD RETAINER ASSY-BLACK		
2	E-53198-1	HANDLE SCREW ASSY PACKAGE		
3	E-13521-2	RETAINER - CORD (LOWER)		
4	E-27382-10	CORD - LOW LEAD (18 GA)		
5	E-53238-13	SCREW PACKAGE		
6	E-38183-1SV	HANDLE SOCKET ASSEMBLY		
7	E-53213-5	NUTS - PACKAGE 10		
8	E-53145	BOLT PACKAGE (10)		
9	E-25103A-4	GRIP - HANDLE		
10	E-53077	SPRING - STRAIN RELIEF PK		
11	E-26176-4	HANDLE ASSEMBLY (UPPER)		
12	E-12637-8	TUBE - HANDLE (LOWER)		

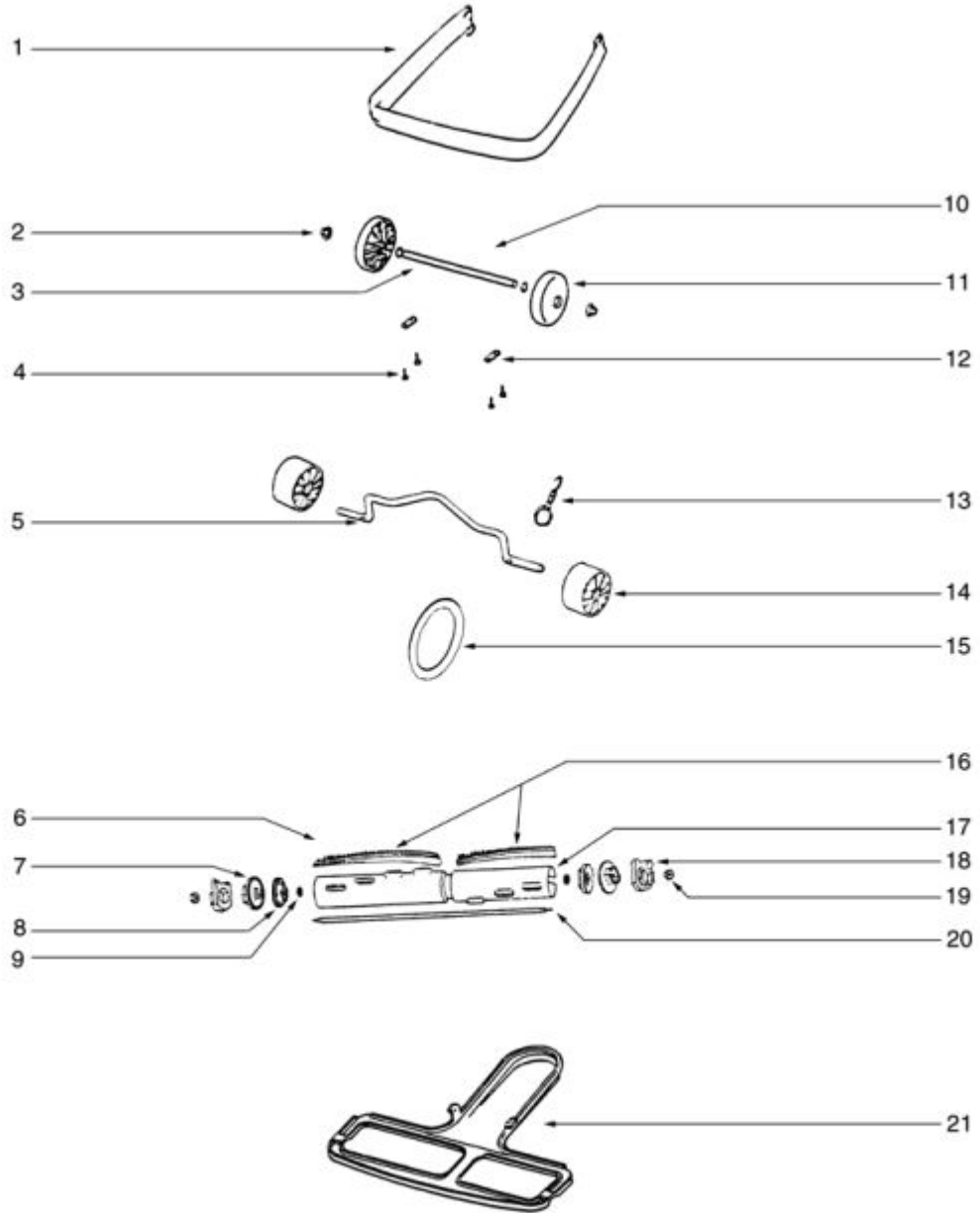
BASE HOOD - S647B



BASE HOOD - S647B

Ref #	Part	Description	Comments	Qty
1	E-53143	SCREW PACKAGE (10)		
2	E-38053-3	KNOB ASSEMBLY		
3	E-54314-9	HOOD & GRAPHICS ASSY - PK		
4	E-14193-1	LENS - HOOD		
5	E-35958A	HEADLAMP SOCKET ASSEMBLY		
6	E-48815	LAMP - HEADLIGHT		
8	E-54352-3	MOTOR ASSEMBLY - PACKAGED		
9	E-53228-2	SCREWS - PACKAGE 10		
10	E-55296	WIRE & TERMINAL ASSEMBLY		
11	E-53213-5	NUTS - PACKAGE 10		
12	E-53238-13	SCREW PACKAGE		
13	E-53140	CLAMP & SCREW ASSY PKG		
15	E-54408-7	BASE ASSEMBLY - 12 INCH		
16	E-24964A-1	CAM (RIGHT)		
17	E-24965A-1	CAM (LEFT)		
18	E-53118	RIVET - SHOULDER PACKAGE		
19	E-53133	STL WASHERS-PKG (48495 (NLA)		
20	E-37590-1	BRACKET - BUSHING		
21	E-53089-1	BUSHING & STRAIN RELIEF P		
22	E-26808-3	BUTTON - SWITCH		
23	E-37989	CLIP - SWITCH		
24	E-60192-1	WIRE SPLICE 5		
25	E-13738-5	SWITCH ASSEMBLY		
26	E-71146	SHIELD - LIGHT		
27	E-53238-14	SCREW PACKAGE		
28	E-38067SV	SEPARATOR ASSEMBLY		
29	E-30517	GASKET - MOTOR SEAL		
30	E-24834A-3	PEDAL - FOOT		
31	E-53097	SPRING - FOOT PEDAL PKG (
32	E-37034	SPRING - ADAPT RETAINER		
33	E-53238-11	SCREW PACKAGE		
34	E-53160	CABLE CLAMP PACKAGE		
35	E-36263	COVER - WHEEL		
	E-38053-2	KNOB ASSEMBLY		
	E-40009A	LAMP - HEADLIGHT		

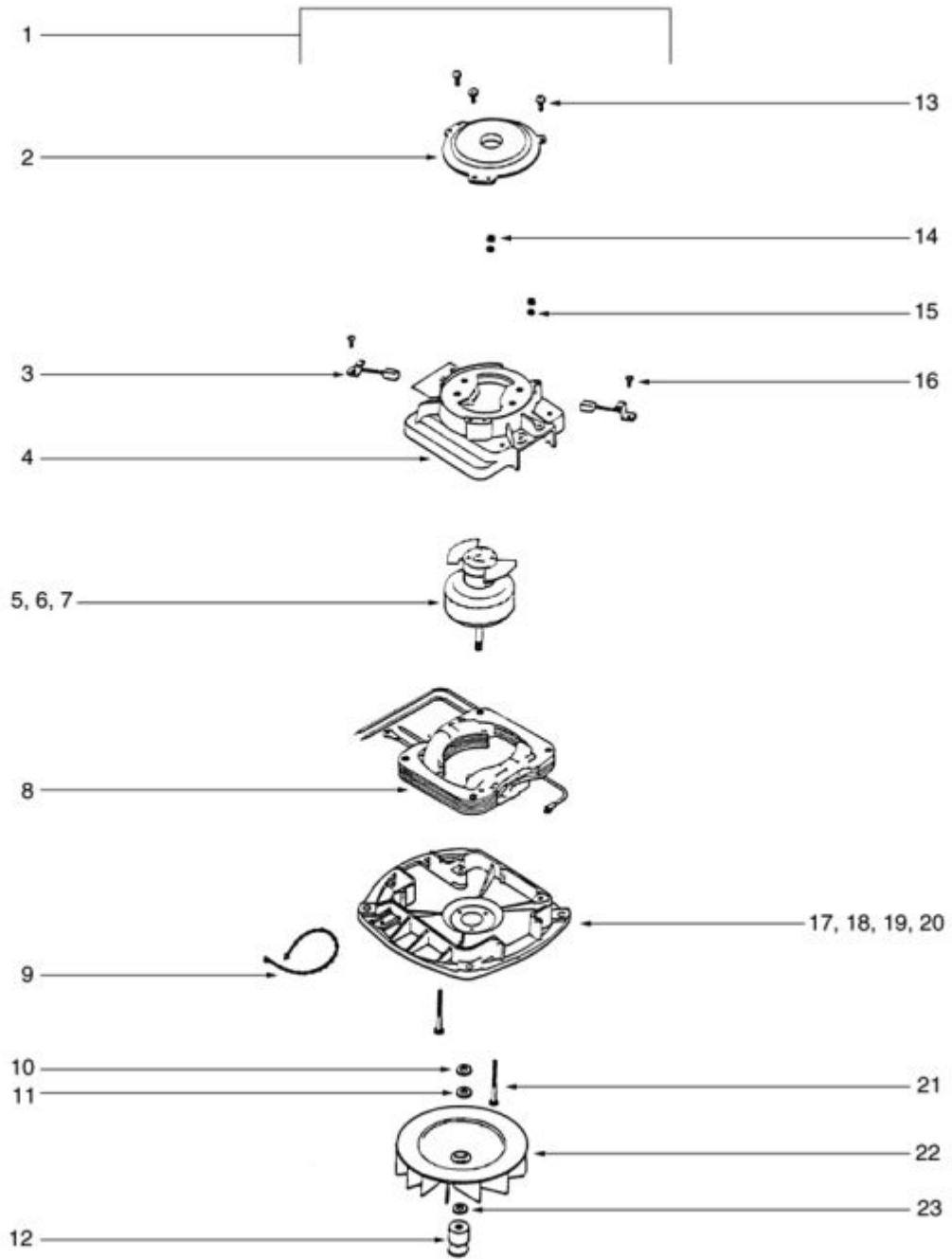
BRUSHROLL - S647B



BRUSHROLL - S647B

Ref #	Part	Description	Comments	Qty
1	E-26296-18	GUARD - FURNITURE		
2	E-53121	PUSH NUT PACKAGE (10)		
3	E-37183	AXLE - REAR		
4	E-53238-11	SCREW PACKAGE		
5	E-35947A	AXLE - FRONT		
6	E-53892-1	DISTR ASSY(sub 53270)		
7	E-27144	CAP - DISTURBULATOR		
8	E-38070SV	RETAINER, BRNG & WASHER A		
9	E-53167	WASHER - SHAFT PACKAGE		
10	E-60161	WHEEL & AXLE ASSY		
11	E-26242-119N	WHEEL - REAR		
12	E-53201	AXLE CLAMP - PACKAGED		
13	E-53076-2	SPRING & AXLE PACKAGE (6)		
14	E-35859A-1	WHEEL - FRONT		
15	E-52100A	BELT PKG ASSY (UPRIGHT)		
16	E-52282-4	BRISTLE STRIP PACKAGE		
17	E-13236-3	TUBE - DISTURBULATOR		
18	E-26059A	CAP - COVER		
19	E-53158	LOCK NUT PACKAGE		
20	E-37378	DIST SHAFT & BRG ASSY - C		
21	E-25922-1	BOTTOM PLATE ASSEMBLY		
	E-26057A	CAP - DISTURBULATOR		
	E-53184	KLIPRING PACKAGE		
	E-54256	BRG & RET ASSY		
	E-53270	DISTURBULATOR ASSEMBLY		

MOTOR - S647B



MOTOR - S647B

Ref #	Part	Description	Comments	Qty
1	E-54352-3	MOTOR ASSEMBLY - PACKAGED		
2	E-20217E	RETAINER - UPPER BEARING		
3	E-30478	MOTOR BRUSH ASSEMBLY		
4	E-54396	MOTOR COVER ASSEMBLY - LA		
5	E-54425-3	KIT - ARMATURE REPLACEMENT		
6	E-53088-5	BALL BEARING - PACKAGE		
7	E-30474A	FAN - MOTOR COOLING		
8	E-53441-2	FIELD ASSEMBLY - PACKAGED		
9	E-46713-1	TIE - CABLE (PURCHASED)		
10	E-54811	FAN WASHER - PACKAGED		
11	E-53148	WASHER - FAN PACKAGE (10)		
12	E-37012-2	PULLEY - MOTOR DRIVE		
13	E-53138	SCREWS - PACKAGE 10		
14	E-56817	NUT - HEX 8-32		
15	E-53222-4	LOCKWASHERS - PACKAGE 10		
16	E-53219-2	SCREWS - PACKAGE 10		
17	E-54169-1	MOTOR BASE ASSEMBLY		
18	E-53187-1	RIVET PACKAGE		
19	E-53142	SCREW PACKAGE (10)		
20	E-12988	FAN BLOWER - MOTOR		