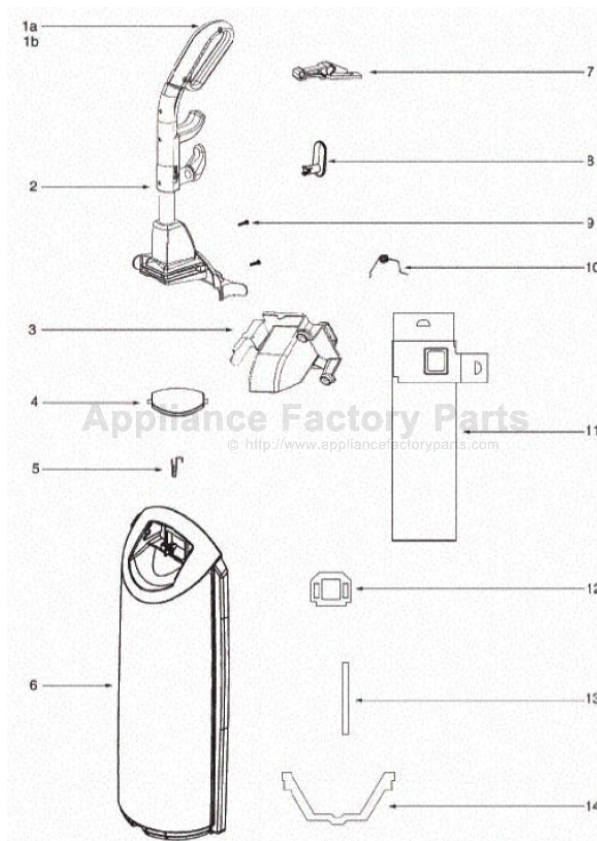


This Owner's Manual is provided and hosted by [Appliance Factory Parts](http://www.appliancefactoryparts.com).



SANITAIRE SC5713 Owner's Manual

[Shop genuine replacement parts for SANITAIRE
SC5713](#)

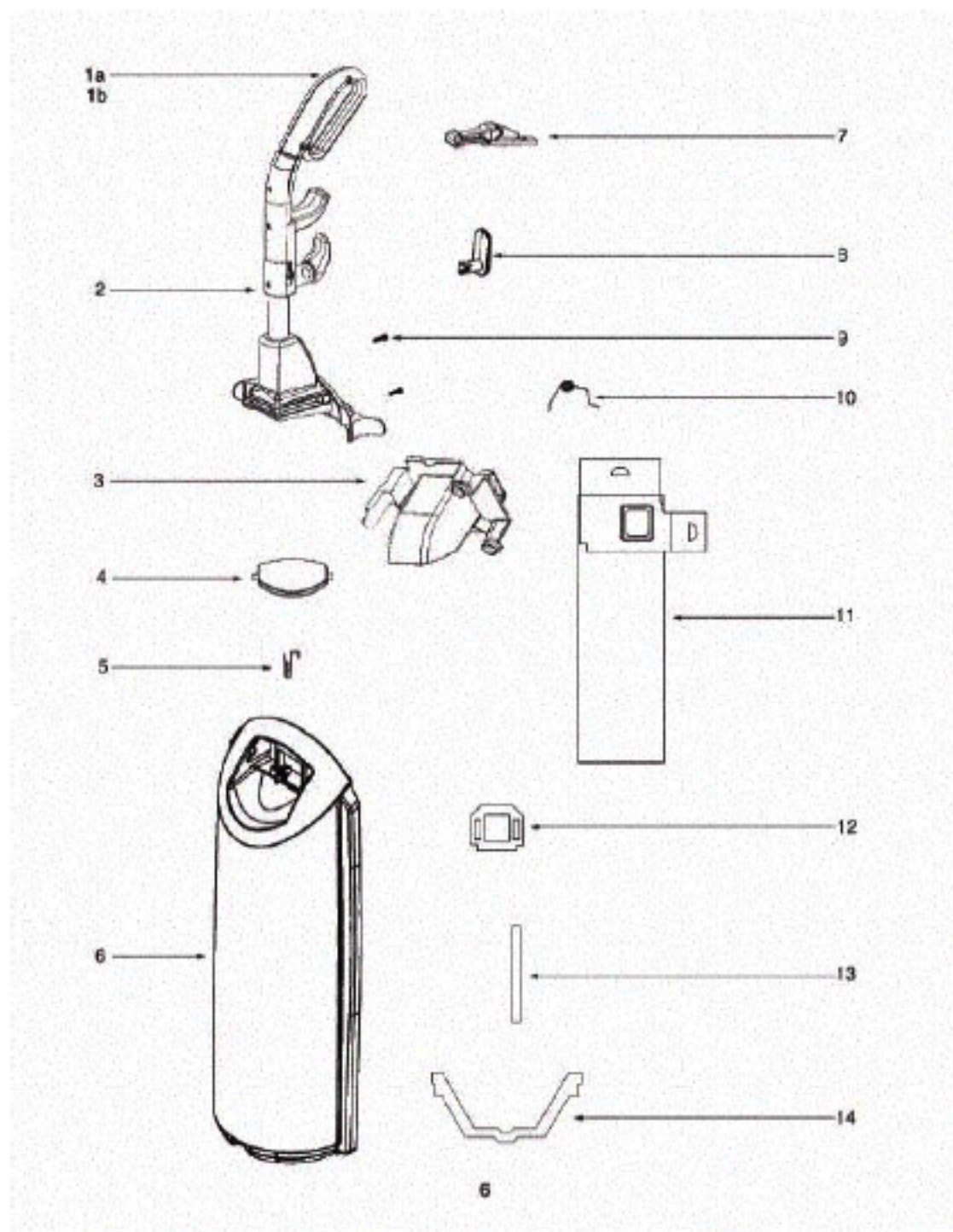


[Find Your SANITAIRE Vacuum Cleaner Parts - Select From 78 Models](#)

----- Manual continues below part list -----

Available Replacement Parts for SANITAIRE SC5713

E-61820	Eureka style LS OEM vacuum bags 3 pk
e-39266	BELT OEM EUREKA EXTENED LIFE 1 PACK
E-71492	WAND, NESTING W/CREVICE TOOL
e-60990-2	BRUSH
E-60844-5	BRUSH ROLL, 12 INCH UPRIGHT
E-71725-313N	ADAPTER-HOSE
E-61865-4	hose assembly cartoned



Handle and Bag Cover - SC5713A

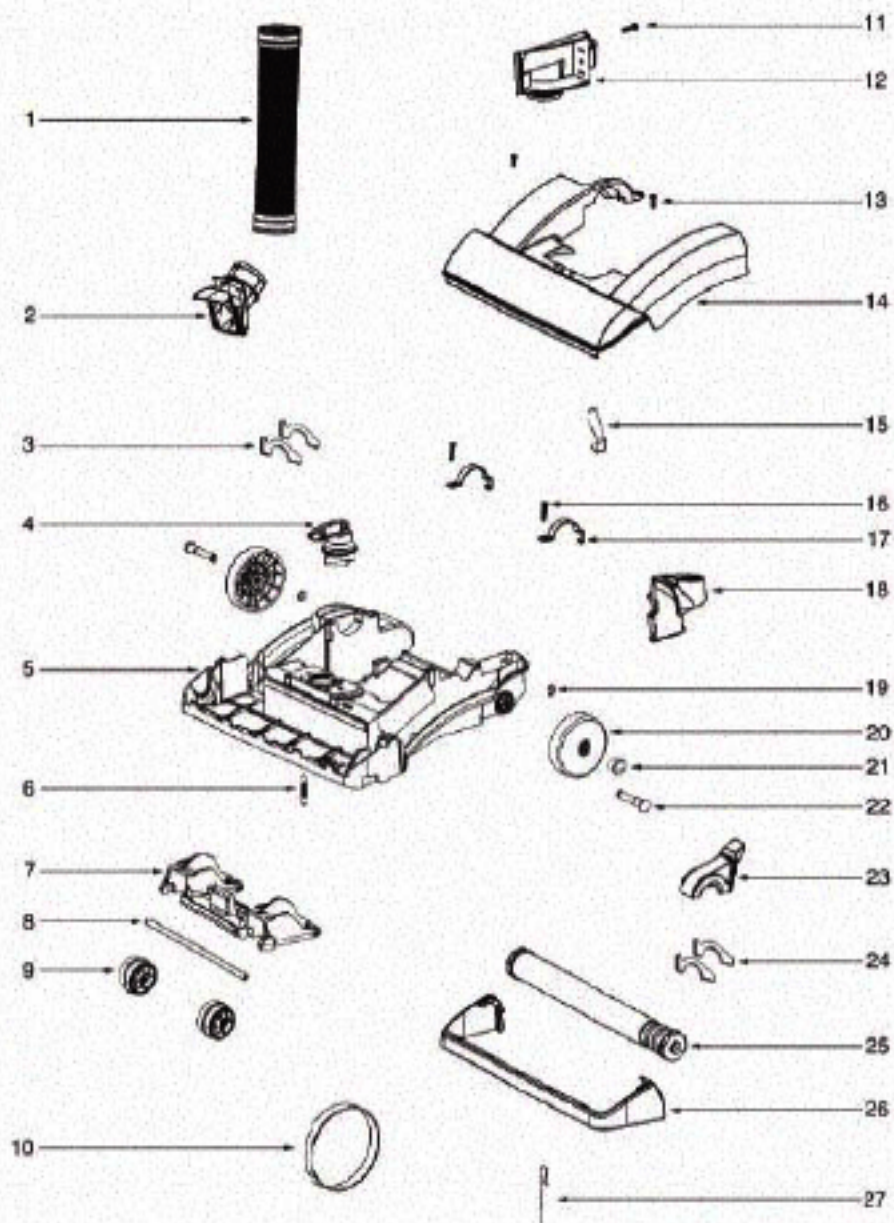
Ref #	Part	Description	Comments	Qty
1	15596-355N	GRIP - LEFT HANDLE		
1B	15597-355N	GRIP - RIGHT HANDLE		
2	73175-1SV	UPPER HANDLE ASSEMBLY		
3	71746-119N	ADAPTER - CLIP		
5	71852	SPRING - TORSION		
6	61880-7	BAG COVER ASSEMBLY - PKGD		
7	71747-119N	BAG-IN-PLACE ARM		
8	28316-355N	RETAINER - CORD		
9	53238-44	SCREW PACKAGE		
10	71748	SPRING - TORSION		
11	61820	PAPER BAG PACKAGE - STYLE		
12	71854	GASKET - ADAPTER		
13	71512	GASKET - BAG COVER		
14	71765A	GASKET - LOWER BAG		
	71801A	FILTER - EXHAUST (HEPA -		

Handle and Bag Cover - SC5713A

Ref #	Part	Description	Comments	Qty
1	15596-355N	GRIP - LEFT HANDLE		
1B	15597-355N	GRIP - RIGHT HANDLE		
2	73175-1SV	UPPER HANDLE ASSEMBLY		
3	71746-119N	ADAPTER - CLIP		
5	71852	SPRING - TORSION		
6	61880-7	BAG COVER ASSEMBLY - PKGD		
7	71747-119N	BAG-IN-PLACE ARM		
8	28316-355N	RETAINER - CORD		
9	53238-44	SCREW PACKAGE		
10	71748	SPRING - TORSION		
11	61820	PAPER BAG PACKAGE - STYLE		
12	71854	GASKET - ADAPTER		
13	71512	GASKET - BAG COVER		
14	71765A	GASKET - LOWER BAG		
	71801A	FILTER - EXHAUST (HEPA -		

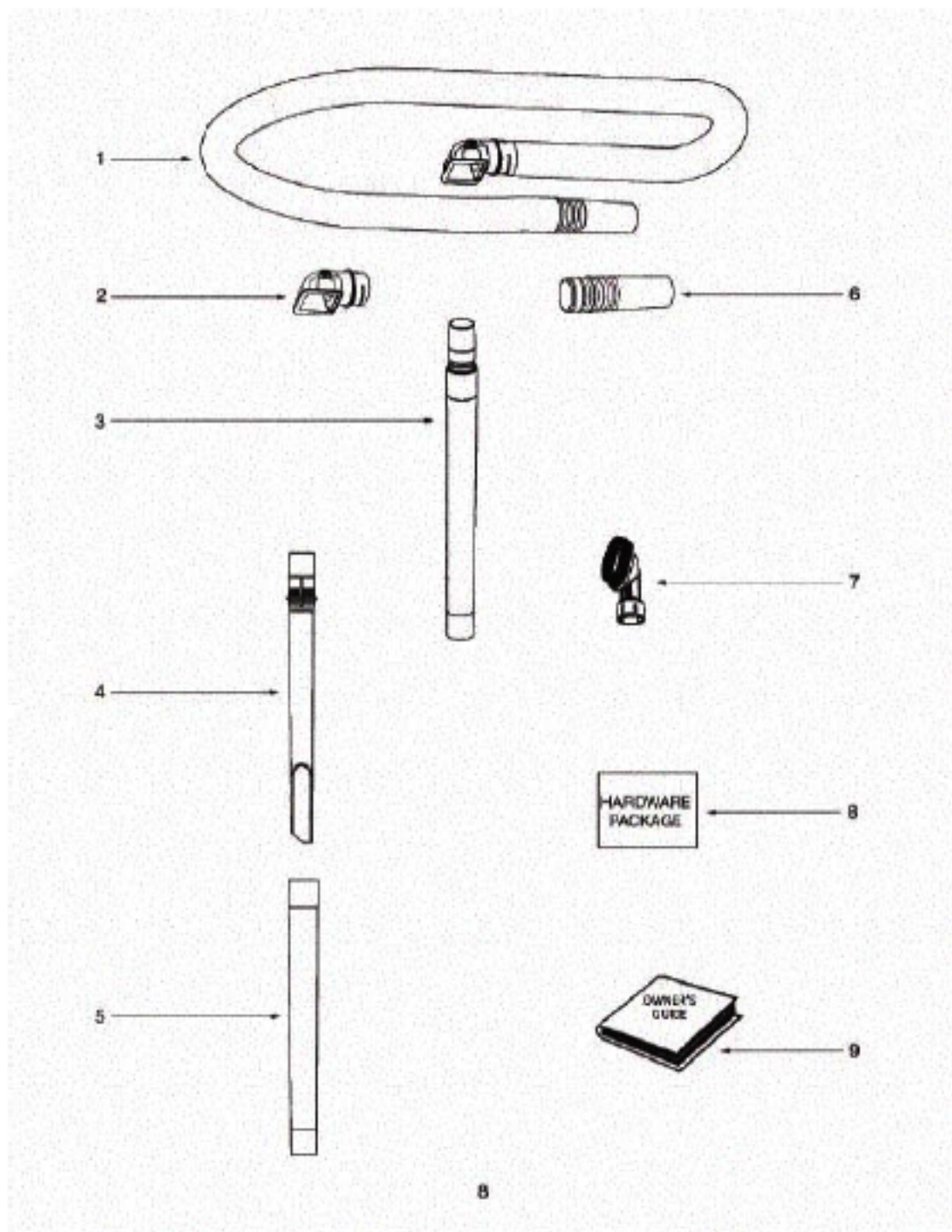
Main Body - SC5713A

Ref #	Part	Description	Comments	Qty
1	38680-31	SUPPLY CORD & TERMINAL ASS		
2	28073A	SWITCH - ROCKER		
3	60192-1	WIRE SPLICE 5		
5	75348	GASKET - MOTOR CAN		
6	62395	MOTOR ASSEMBLY - PACKAGED		
7	71851-119N	MOTOR SCREEN		
8	71480	FILTER - PRE-MOTOR		
9	61879-5	MOTOR COVER ASSY - PKGD		
11			Not on this model.	
12			Not on this model.	
13			Not on this model.	
14			Not on this model.	
15	39252-1	THERMOSTAT & TERMINAL ASS		
16	72127-1	SWITCH COVER ASSEMBLY		
19	71455-119N	TOOL PACK - LOWER		
20	53238-27	SCREW PACKAGE		
21	61840	WASHABLE HEPA FILTER - PK		
22	72006-5	FILTER COVER & GRAPHICS A		
23	70084	BUSHING - MOTOR SUPPORT		
24	71484	GASKET - MOTOR COVER		
25	71969-1	GASKET - MOTOR HUB		
26	71465	CORD - JUMPER		
27	72224-1	FOAM - SOUND		
28	70651-1	TUBE - FLEXIBLE		
29	72167	PLUG		
4	71744-2	REAR HOUSING ASSEMBLY		



Base and Hood - SC5713A

Ref #	Part	Description	Comments	Qty
1	71466	BASE HOSE ASSY		
2	71447-119N	BASE HOSE ASSY		
3	73153	FELT - BASE		
4	71448-355N	KNOB - HEIGHT ADJUSTMENT		
5	62411-1	BASE ASSY - PKGD		
6	54943	SPRING PACKAGE		
7	71446A-119N	CARRIAGE - WHEEL		
8	71478	AXLE - FRONT		
9	39173A-119N	WHEEL - FRONT		
10	61120A	BELT (LONG LIFE)-U		
12	71726-119N	BASE HOSE ASSY		
13	53238-44	SCREW PACKAGE		
14	62412-1	HOOD ASSEMBLY - PACKAGED		
15	71574	SPRING - HANDLE RELEASE		
16	53238-27	SCREW PACKAGE		
17	71487	CLAMP - MOTOR		
18	71457-355N	RELEASE - HANDLE		
19	54432-2	PACKAGE - RETAINING RING		
20	72512-1			
21	73432	BUSHING - AXLE		
22	38590	AXLE - REAR		
23	71741A	BELT CAP ASSEMBLY		
24	73152	FELT - BELT CAP		
25	60844-5	12" DISTURBULATOR ASSY -		
27	38063	GUARD - BELT		



Accessories - SC5713A

Ref #	Part	Description	Comments	Qty
1	61865-4	HOSE ASSEMBLY - CARTONED		
2	71725-313N	ADAPTER - HOSE		
3	71492A	NESTING WAND ASSEMBLY		
4	71956A-355N	WAND - CREVICE		
5	71973-119N	WAND - OUTER		
6	70559A-119N	COUPLING - HOSE		
7	60990-2	COMBINATION BRSH BRSTLD-C		
8	72322	PACKAGE - HARDWARE		