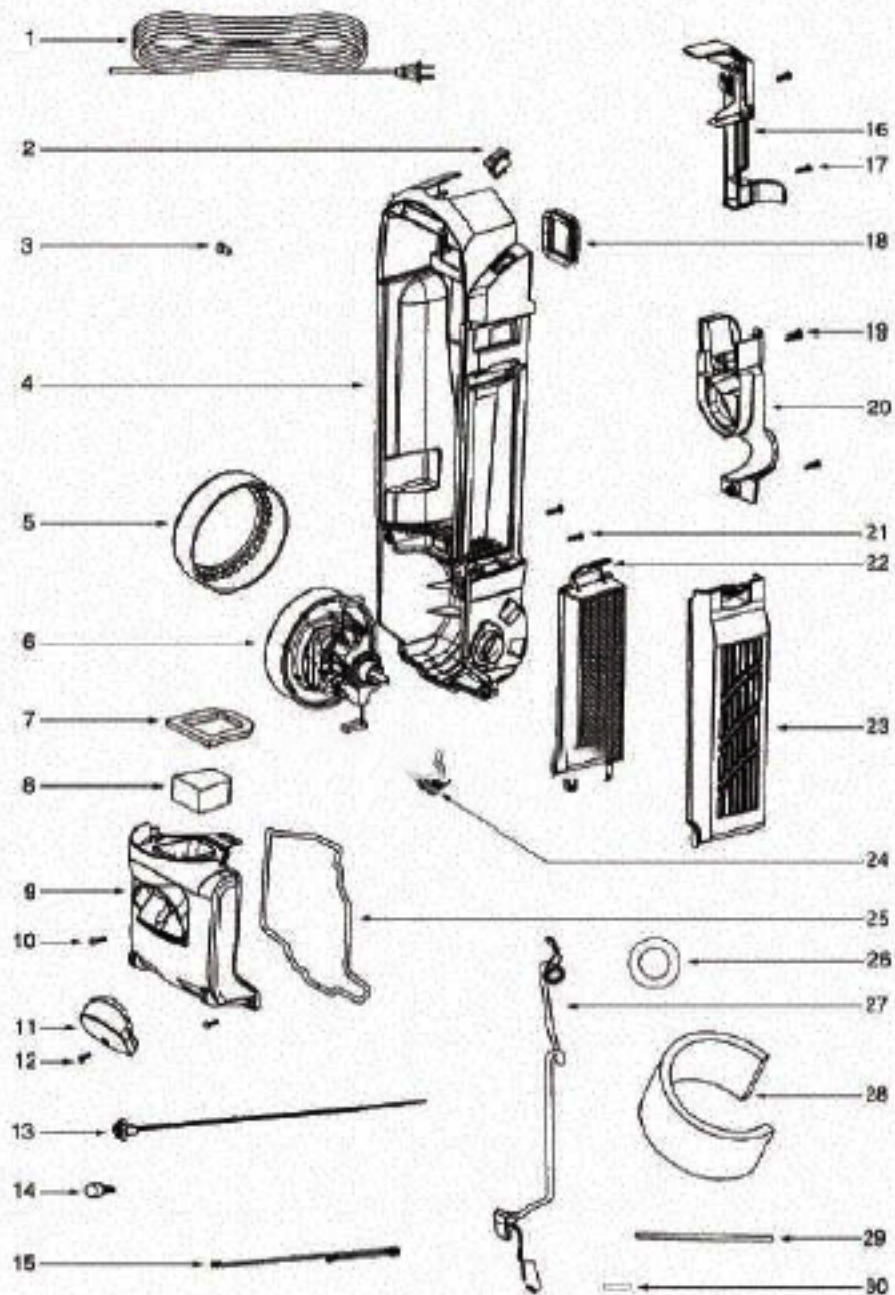


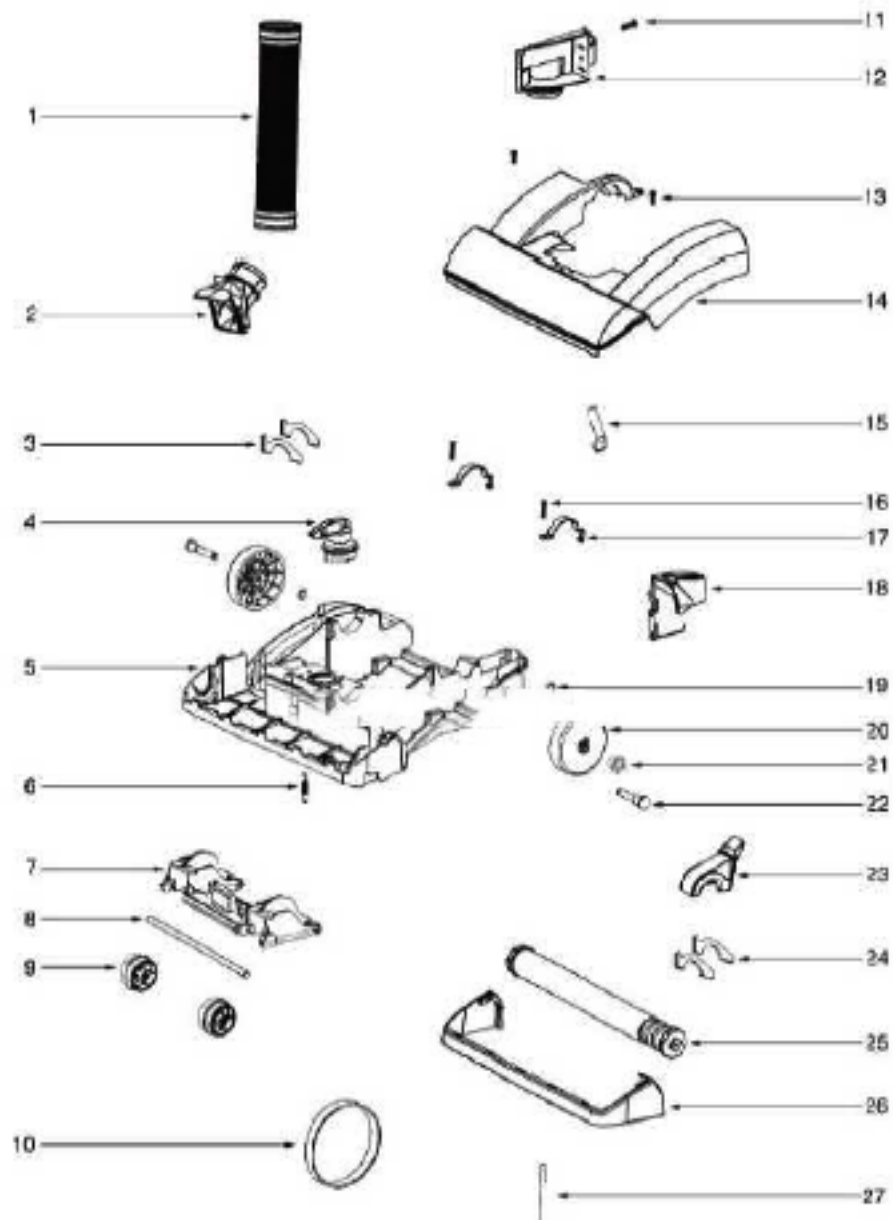
HANDLE & DUST CUP - SC5845A

| Ref # | Part | Description | Comments | Qty |
|-------|------------|---------------------------|-------------------------------------|-----|
| 1a | 15596-355N | GRIP - LEFT HANDLE | | |
| 1b | 15597-355N | GRIP - RIGHT HANDLE | | |
| 4 | 61825 | DUST CUP FILTER PACKAGE D | | |
| 5 | 61864-1 | DUST CUP ASSY - PKGD | | |
| 6 | 28316-355N | RETAINER - CORD | | |
| 7 | 53238-44 | SCREW PACKAGE | Pkg of 10 | |
| 8 | 71479-355N | LATCH - DUST CUP | | |
| 9 | 61866 | SPRING PACKAGE | Pkg of 5 | |
| 10 | 53238-27 | SCREW PACKAGE | Pkg of 10 | |
| 12 | 71785-119N | CATCH - FILTER IN PLACE | | |
| 13 | 61867 | SPRING PACKAGE | | |
| 14 | 71451-119N | CYCLONE | | |
| 15 | 71475 | GASKET - CYCLONE | | |
| 2 | 73175-1SV | UPPER HANDLE ASSEMBLY | | |
| 3 | 71537-16 | CYCLONE ASSEMBLY | | |
| 11 | | | Top cover on cyclone assy complete. | |



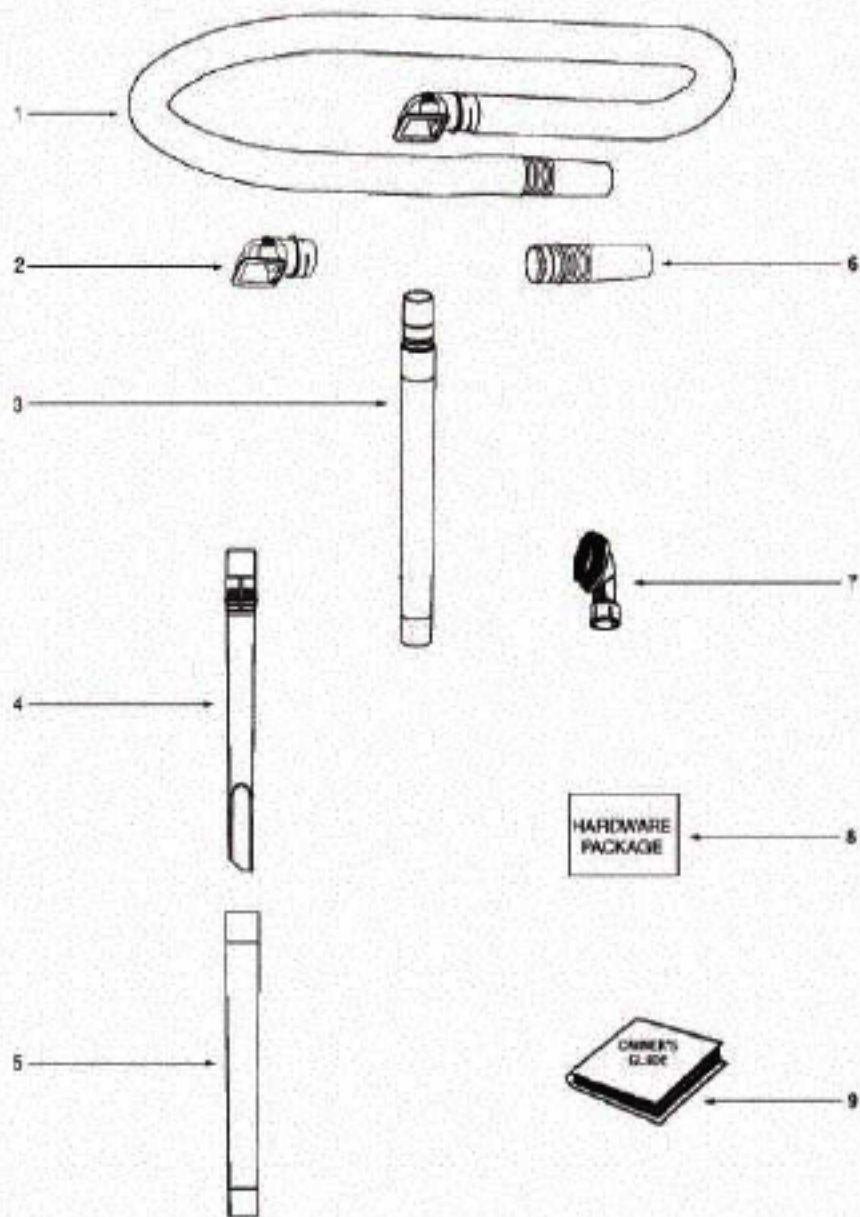
MAIN BODY - SC5845A

| Ref # | Part | Description | Comments | Qty |
|-------|------------|---------------------------|--|-----|
| 2 | 28073A | SWITCH - ROCKER | | |
| 3 | 60192-1 | WIRE SPLICE 5 | | |
| 4 | 72126B-1 | REAR HOUSING ASSEMBLY | Includes items 18 & 25 | |
| 5 | 75348 | GASKET - MOTOR CAN | | |
| 6 | 62395 | MOTOR ASSEMBLY - PACKAGED | If the model is SC5845A-1 then the motor is 62394. | |
| 7 | 71483 | GASKET - DIRT CUP LOWER | | |
| 8 | 71480 | FILTER - PRE-MOTOR | | |
| 9 | 61863-14 | MOTOR COVER ASSY - PACKAG | Includes items 7 & 8 | |
| 10 | 53238-27 | SCREW PACKAGE | | |
| 11 | 71460-313N | LENS - HEADLAMP | | |
| 12 | 53238-44 | SCREW PACKAGE | Pkg of 10 | |
| 13 | 70701-2 | SOCKET & TERMINAL ASSY | | |
| 14 | 57940-3 | LAMP - HEADLIGHT | | |
| 15 | 39252-1 | THERMOSTAT & TERMINAL ASS | | |
| 16 | 72127-1 | SWITCH COVER ASSEMBLY | | |
| 17 | 53238-27 | SCREW PACKAGE | Pkg of 10 | |
| 18 | 71482 | GASKET - INTAKE | | |
| 19 | 53238-27 | SCREW PACKAGE | Pkg of 10 | |
| 20 | 71455-119N | TOOL PACK - LOWER | | |
| 21 | 53238-27 | SCREW PACKAGE | Pkg of 10 | |
| 22 | 61840 | WASHABLE HEPA FILTER - PK | | |
| 23 | 72006-5 | FILTER COVER & GRAPHICS A | | |
| 24 | 70084 | BUSHING - MOTOR SUPPORT | | |
| 25 | 71484 | GASKET - MOTOR COVER | | |
| 26 | 71969-1 | GASKET - MOTOR HUB | | |
| 1 | 38680-31 | SUPPLY CORD & TERMINAL AS | | |
| 27 | 71465 | CORD - JUMPER | | |
| 28 | 72224-1 | FOAM - SOUND | | |
| 29 | 70651-1 | TUBE - FLEXIBLE | | |
| 30 | 72157 | PLUG | | |



BASE AND HOOD - SC5845A

| Ref # | Part | Description | Comments | Qty |
|-------|-------------|---------------------------|---|-----|
| 1 | 71466 | BASE HOSE ASSY | | |
| 2 | 71447-119N | BASE HOSE ASSY | | |
| 3 | 73153 | FELT - BASE | | |
| 4 | 71448-355N | KNOB - HEIGHT ADJUSTMENT | | |
| 5 | 61877-10 | BASE ASSEMBLY - PACKAGED | Includes items 3,4,6,7,8,9,15,18,19,20,21,22,26 & 27 | |
| 6 | 54943 | SPRING PACKAGE | Pkg of 10 | |
| 7 | 71445A-119N | CARRIAGE - WHEEL | | |
| 8 | 71478 | AXLE - FRONT | | |
| 9 | 39173A-119N | WHEEL - FRONT | | |
| 10 | 61120A | BELT PKG ASSY-STYLE U EXT | | |
| 11 | 53238-27 | SCREW PACKAGE | Pkg of 10 | |
| 12 | 71726-119N | BASE HOSE ASSY | | |
| 13 | 53238-44 | SCREW PACKAGE | Pkg of 10 | |
| 14 | 61878-19 | HOOD ASSEMBLY - PACKAGED | | |
| 15 | 71574 | SPRING - HANDLE RELEASE | | |
| 16 | 53238-27 | SCREW PACKAGE | Pkg of 10 | |
| 17 | 71487 | CLAMP - MOTOR | | |
| 18 | 71457-355N | RELEASE - HANDLE | | |
| 19 | 54432-1 | PACKAGE - RETAINING RING | Pkg of 10 | |
| 20 | 72512-1 | | | |
| 21 | 73432 | BUSHING - AXLE | | |
| 22 | 38590A | AXLE - REAR | | |
| 23 | 71741A | BELT CAP ASSEMBLY | | |
| 24 | 71672A | FELT - BELT CAP | Includes item 24 | |
| 25 | 62228-2 | BRUSHROLL ASSEMBLY - CART | | |
| 26 | | | Furniture guard sold on hood assy only. | |
| 27 | 38063 | GUARD - BELT | | |



ACCESSORIES - SC5845A

| Ref # | Part | Description | Comments | Qty |
|-------|-------------|---------------------------|----------------------|-----|
| 1 | 61865-4 | HOSE ASSEMBLY - CARTONED | Includes items 2 & 6 | |
| 2 | 71725-313N | ADAPTER - HOSE | | |
| 6 | 70559A-119N | COUPLING - HOSE | | |
| 3 | 71492A | NESTING WAND ASSEMBLY | | |
| 7 | 60990-2 | COMBINATION BRSH BRSTLD-C | | |
| 4 | 71955A-355N | WAND - CREVICE | | |
| 8 | 72322 | PACKAGE - HARDWARE | | |
| 5 | 71973-119N | WAND - OUTER | | |
| 9 | 73551 | | | |