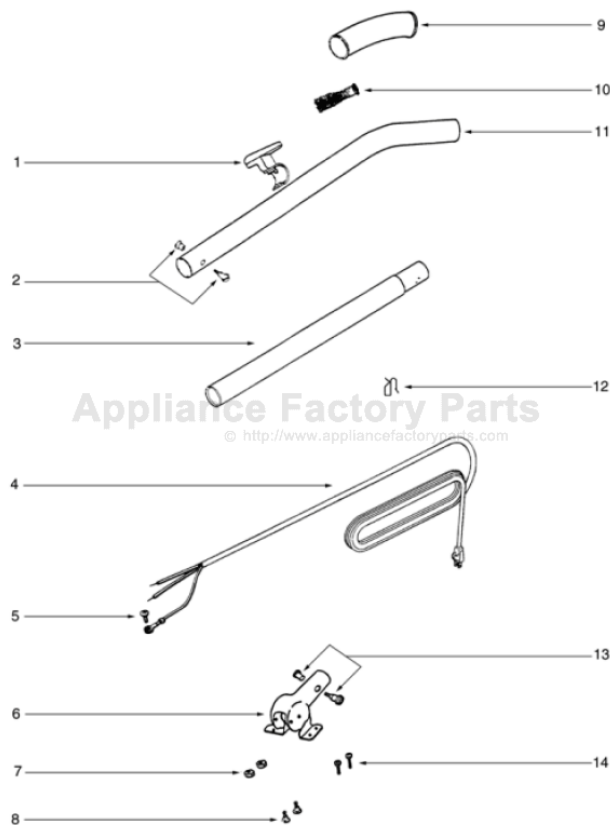


This Owner's Manual is provided and hosted by [Appliance Factory Parts](http://www.appliancefactoryparts.com).



SANITAIRE SC689A Owner's Manual

[Shop genuine replacement parts for SANITAIRE
SC689A](#)



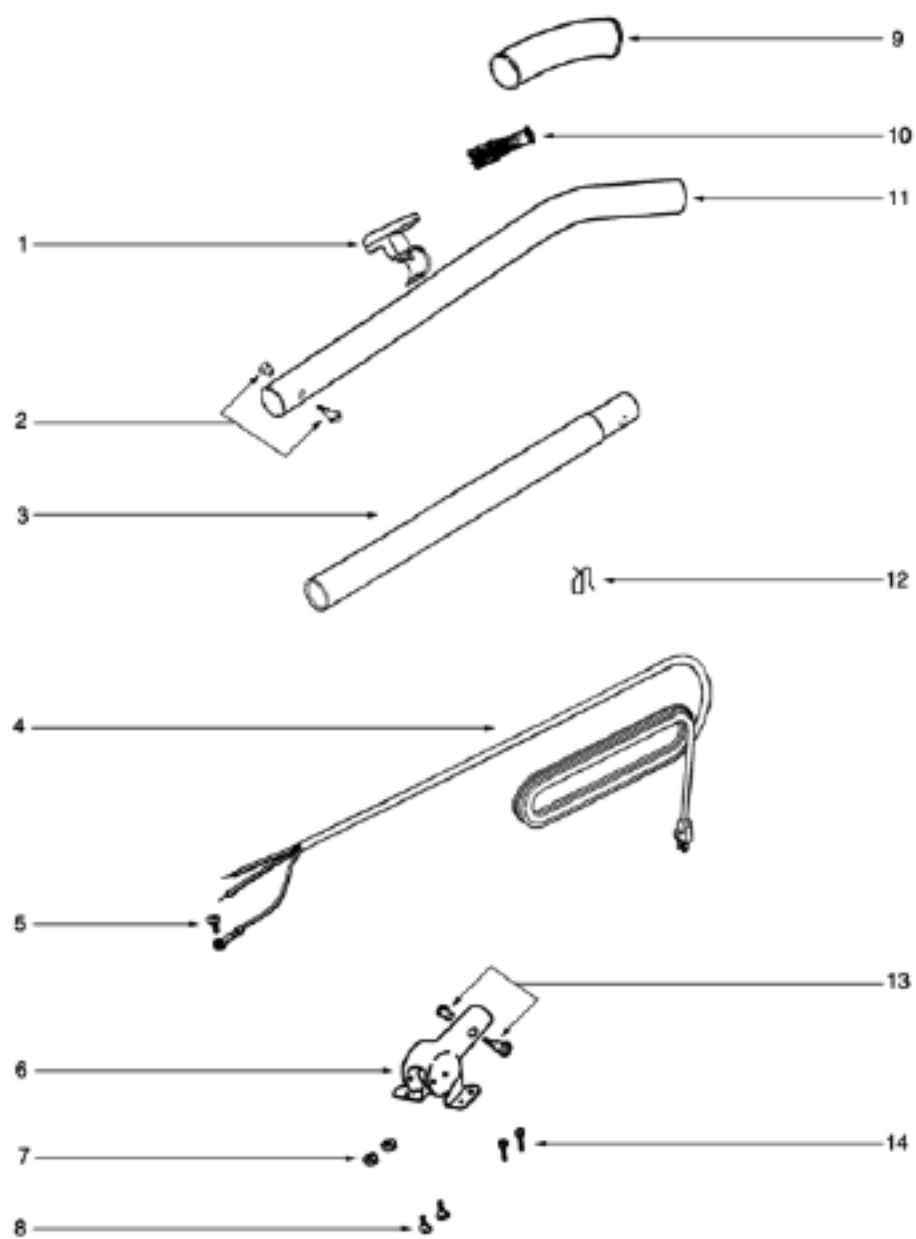
[Find Your SANITAIRE Vacuum Cleaner Parts - Select From 78 Models](#)

----- Manual continues below part list -----

Available Replacement Parts for SANITAIRE SC689A

[53201](#)

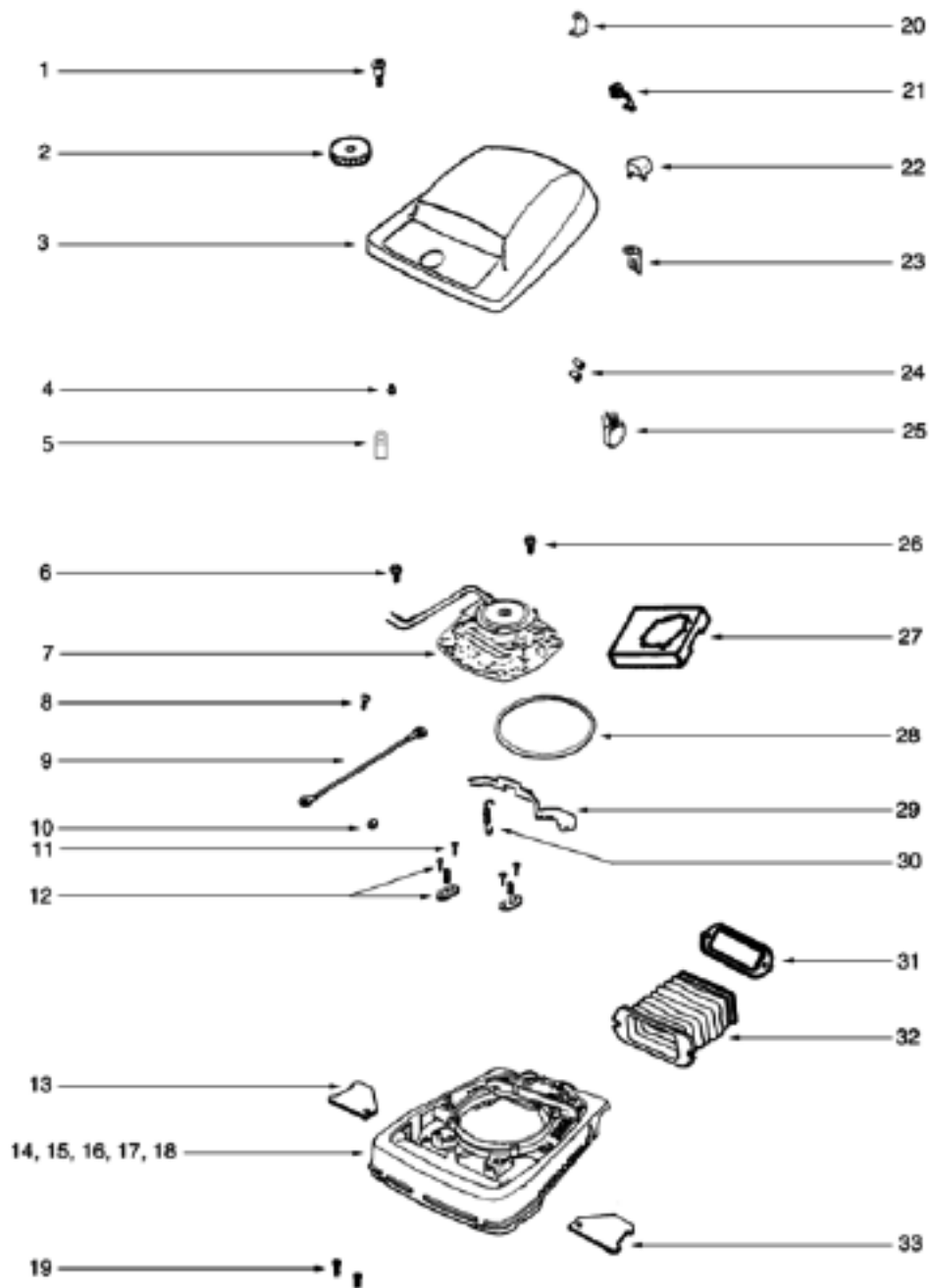
porcelain steel wire cooking grid



PARTS 4 - SC689A

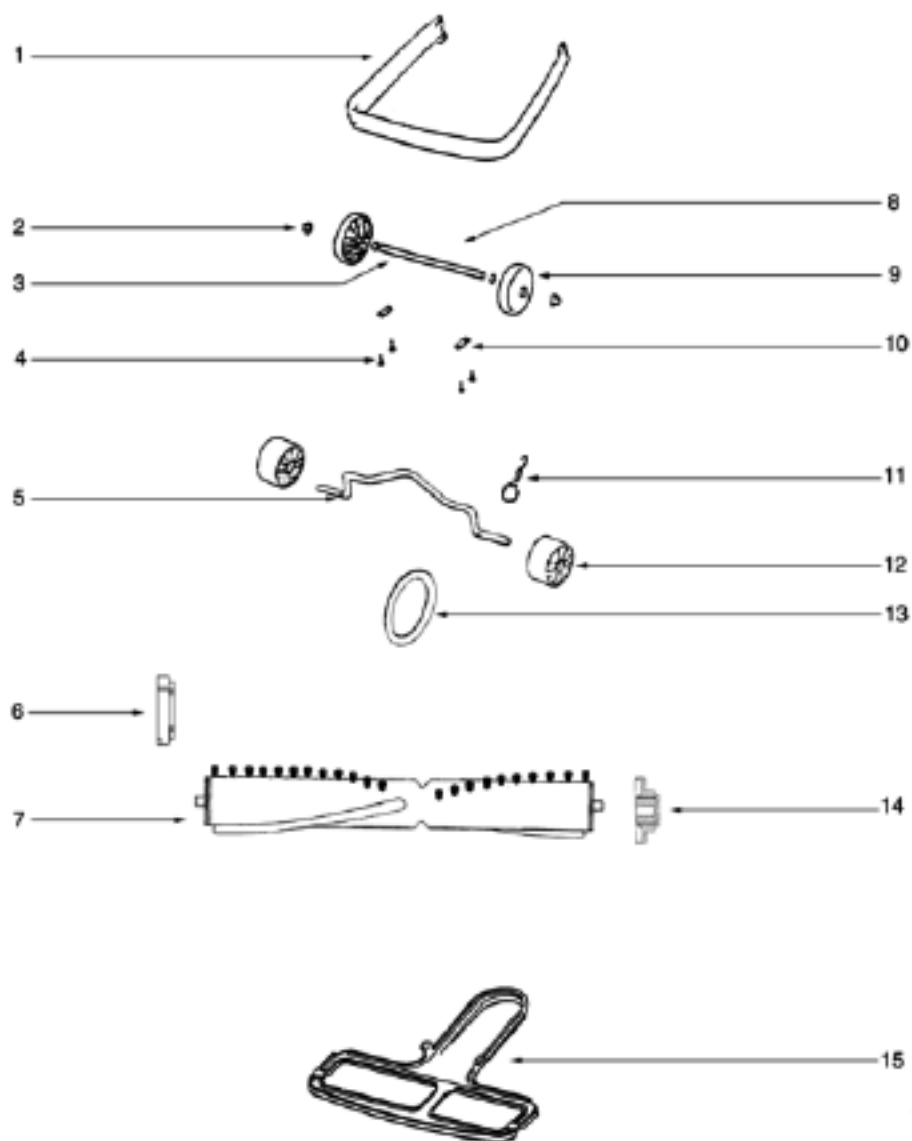
Ref #	Part	Description	Comments	Qty
1	53574-1	RETNR PKG(UPPER&LOWER)BEIGE		
2	53198-1	HANDLE SCREW ASSY PACKAGE		
3	15800-1	TUBE - HANDLE (LOWER)		
4	52370-14	CORD & TERMINAL ASSY 30 B		
5	53238-13	SCREW PACKAGE		
6	38183-1	HANDLE SOCKET ASSY		
7	53213-5	NUTS - PACKAGE 10		
8	53145	BOLT PACKAGE (10)		
9	35293-6	GRIP - HANDLE		
10	53077	SPRING - STRAIN RELIEF PK		
11	25329-16SV	HANDLE ASSEMBLY (UPPER)		
12	55015	CLIP - WIRE		

PARTS 1 - SC689A



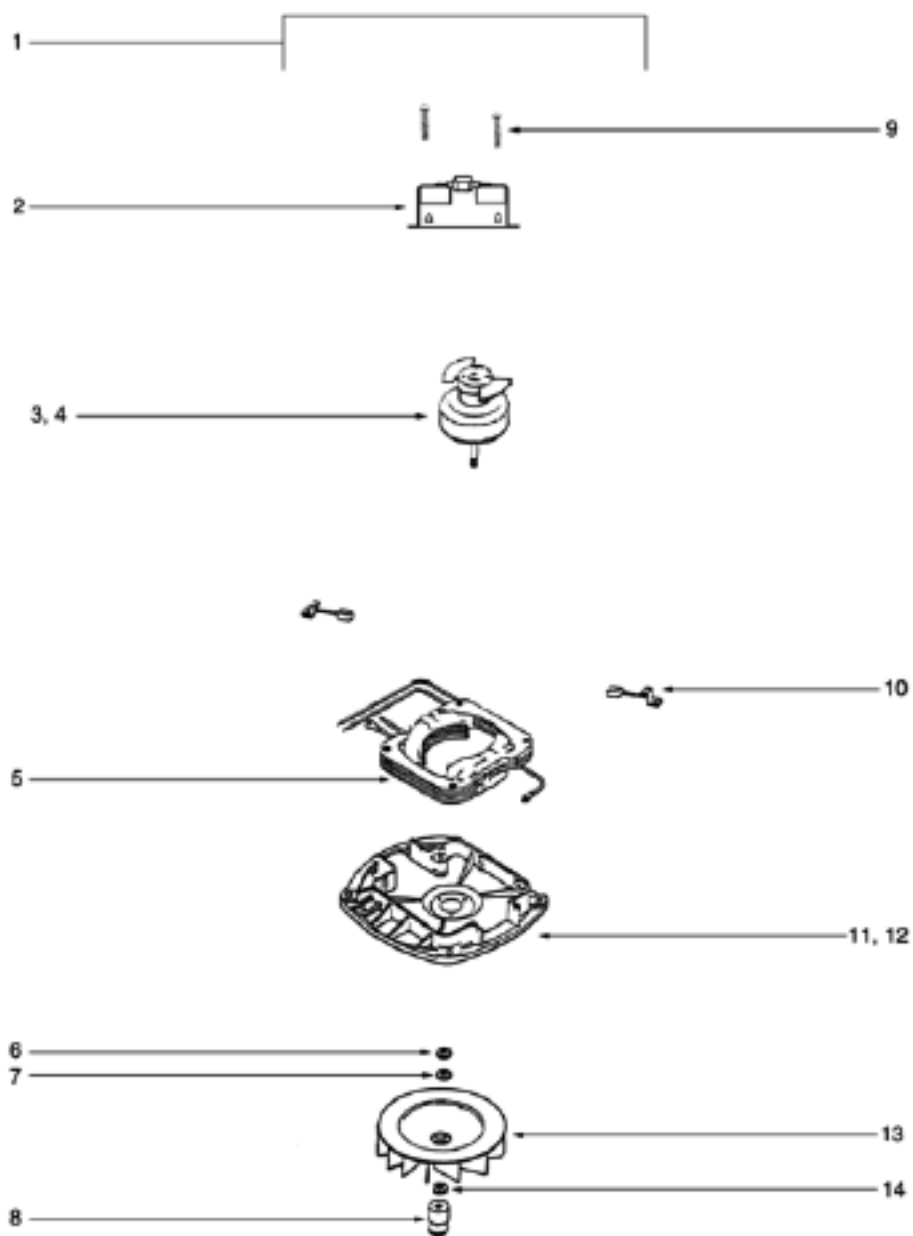
PARTS 1 - SC689A

Ref #	Part	Description	Comments	Qty
1	53143	SCREW PACKAGE (10)		
2	38053-2	KNOB ASSEMBLY		
3	54314-2	HOOD & GRAPHICS ASSY - PK		
4	53238-11	SCREW PACKAGE		
5	57687-1	CLAMP - CABLE		
6	53238-14	SCREW PACKAGE		
7	53349-8	MOTOR ASSEMBLY - CARTONED		
8	53228-2	SCREWS - PACKAGE 10		
9	55296	WIRE & TERMINAL ASSEMBLY		
10	53213-5	NUTS - PACKAGE 10		
11	53238-13	SCREW PACKAGE		
12	53140	CLAMP & SCREW ASSY PKG		
13	36263	COVER - WHEEL		
14	54408-5	BASE ASSEMBLY - 12" - CAR		
15	24964A-1	CAM (RIGHT)		
16	24965A-1	CAM (LEFT)		
17	53118	RIVET - SHOULDER PACKAGE		
18	53133	STEEL WASHERS - PACKAGE 1		
19	53215-5	SCREW PACKAGE		
20	38218-1	BRACKET - BUSHING		
21	53122	STRAIN RELIEF BUSHING - P		
22	14660-1	BUTTON - SWITCH		
23	37989	CLIP - SWITCH		
24	60192-1	WIRE SPLICE 5		
25	13738-5	SWITCH ASSEMBLY		
26	53238-4	SCREW PACKAGE		
27	383145V	SEPARATOR ASSEMBLY		
28	30517	GASKET - MOTOR SEAL		
29	24834-1	PEDAL - FOOT		
30	53097	SPRING - FOOT PEDAL PKG (
31	38288-1	CLAMP - BELLOWS		
32	14763-1	BELLOWS		



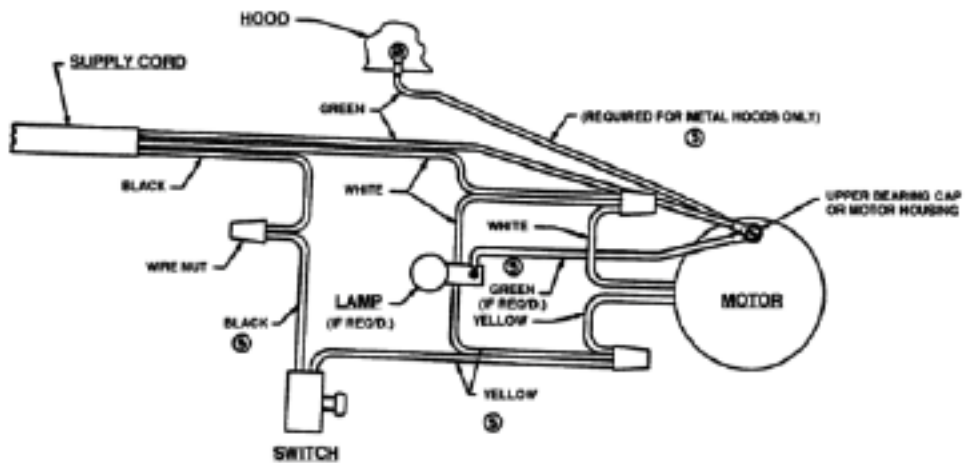
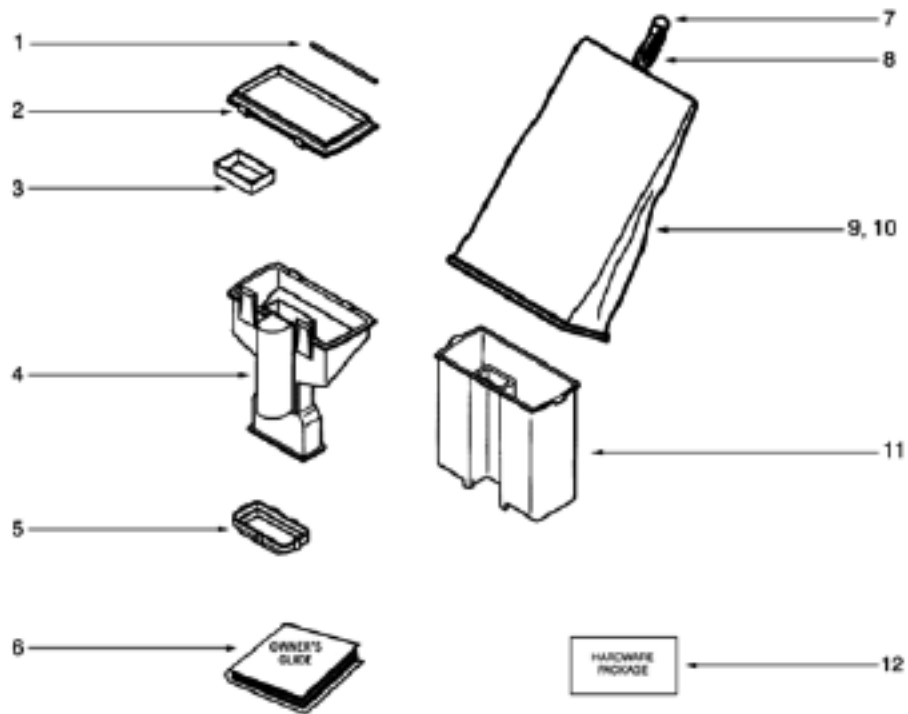
PARTS 2 - SC689A

Ref #	Part	Description	Comments	Qty
1	28504-1	GUARD - FURNITURE		
2	53121	PUSH NUT PACKAGE (10)		
3	37183	AXLE - REAR		
4	53238-11	SCREW PACKAGE		
5	35947A	AXLE - FRONT		
6	26059A	CAP - COVER		
7	54104-1	DISTURBULATOR REPLACEMENT		
8	60161	WHEEL & AXLE ASSY		
9	26242-119N	WHEEL - REAR		
10	53201	CLAMPS - PACKAGE 10		
11	53076-2	SPRING & AXLE PACKAGE (6)		
12	35859A-1	WHEEL - FRONT		
13	52100A	BELT PKG ASSY (UPRIGHT)		
14	38138	CAP & BEARING ASSEMBLY		
15	25822-1	BOTTOM PLATE ASSEMBLY		



PARTS 3 - SC689A

Ref #	Part	Description	Comments	Qty
1	53349-8	MOTOR ASSEMBLY - CARTONED		
2	54768	FAN END HOUSING - LABELED		
3	53470-3	ARMATURE - CARTONED		
4	26136	FAN		
5	53901-2	FIELD ASSEMBLY - PKG		
6	54811	FAN WASHER - PACKAGED		
7	53148	WASHER - FAN PACKAGE (10)		
8	37012-2	PULLEY - MOTOR DRIVE		
9	40009A	LAMP - HEADLIGHT		
10	25172A-1	MOTOR BRUSH ASSEMBLY		
11	54171-1	MOTOR BASE ASSEMBLY		
12	53088-5	BALL BEARING - PACKAGE		
13	12988-1	FAN BLOWER - MOTOR		



36575 WIRING DIAGRAM

PARTS 5 - SC689A

Ref #	Part	Description	Comments	Qty
1	55399-1	PIN COVER		
2	14765-1	FLANGE - BAG (OUTER)		
3	38289	GASKET		
4	54561-1	SUPPORT & LATCH ASSY - PK		
5	26266-2	CLAMP		
6	72926	OWNER'S GUIDE		
7	57711	RING STEEL		
8	57686-1	HOOK - SNAP		
9	54422-7	BAG ASSEMBLY - PACKAGED		
10	58223	GASKET - DIRT CUP		
11	01959-313N	DIRT CUP		
12	72661	HARDWARE PACKAGE-COMM DIR		
13	60122-1	DIRT CUP ASSY		
	70004			