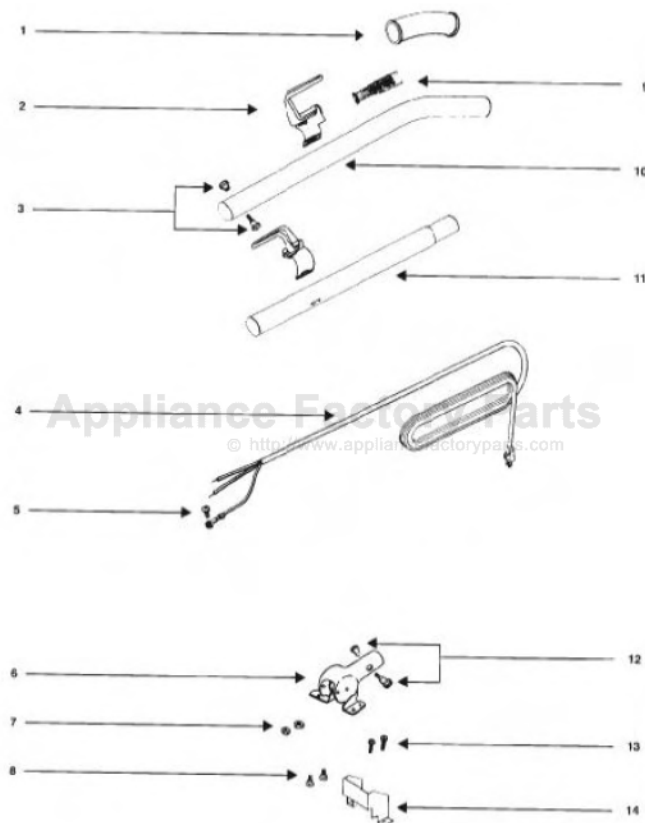


This Owner's Manual is provided and hosted by Appliance Factory Parts.



SANITAIRE SC888J Owner's Manual

[Shop genuine replacement parts for SANITAIRE
SC888J](#)



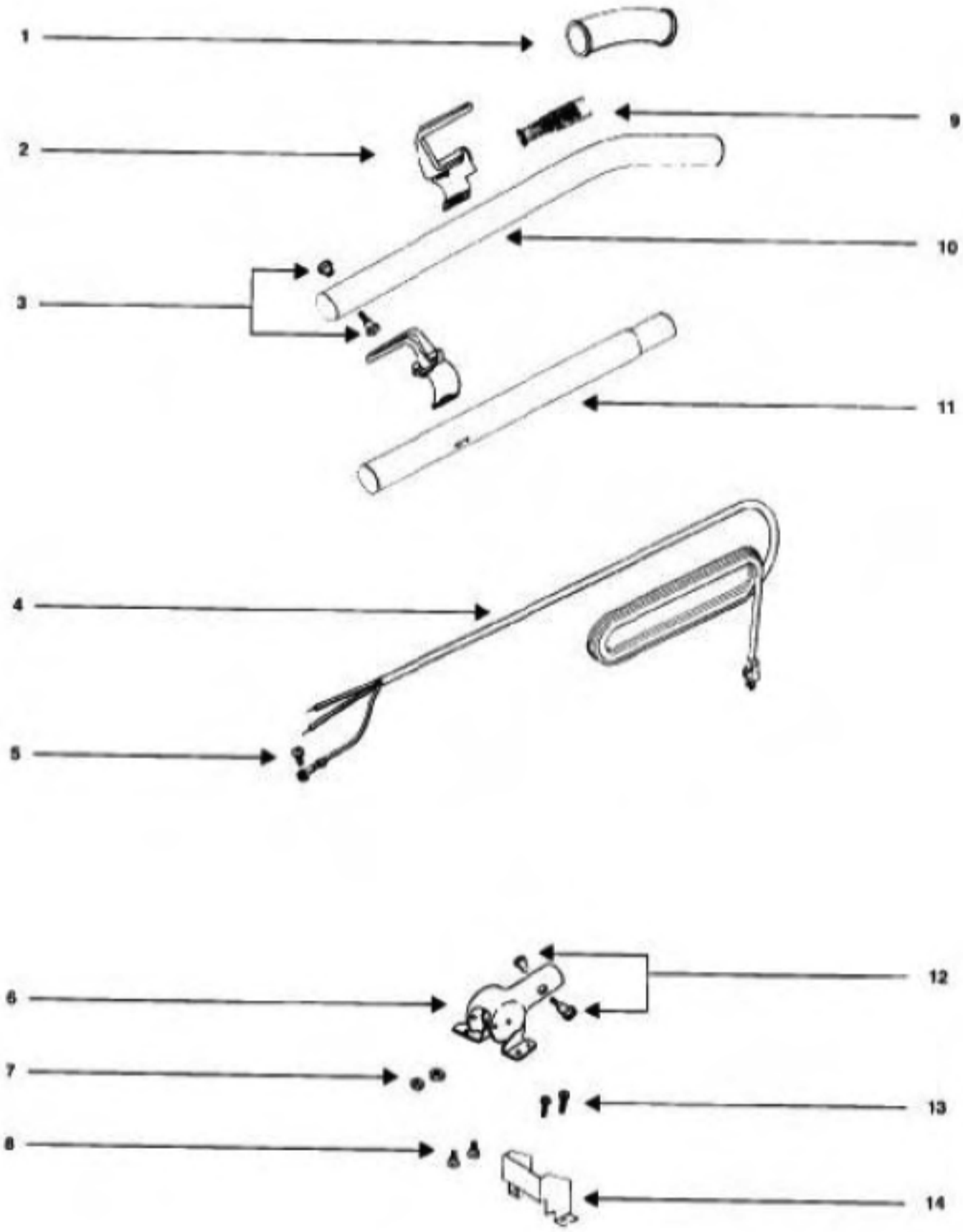
[Find Your SANITAIRE Vacuum Cleaner Parts - Select From 78 Models](#)

----- Manual continues below part list -----

Available Replacement Parts for SANITAIRE SC888J

53201	porcelain steel wire cooking grid
E-36409-13	SWITCH - PUSH

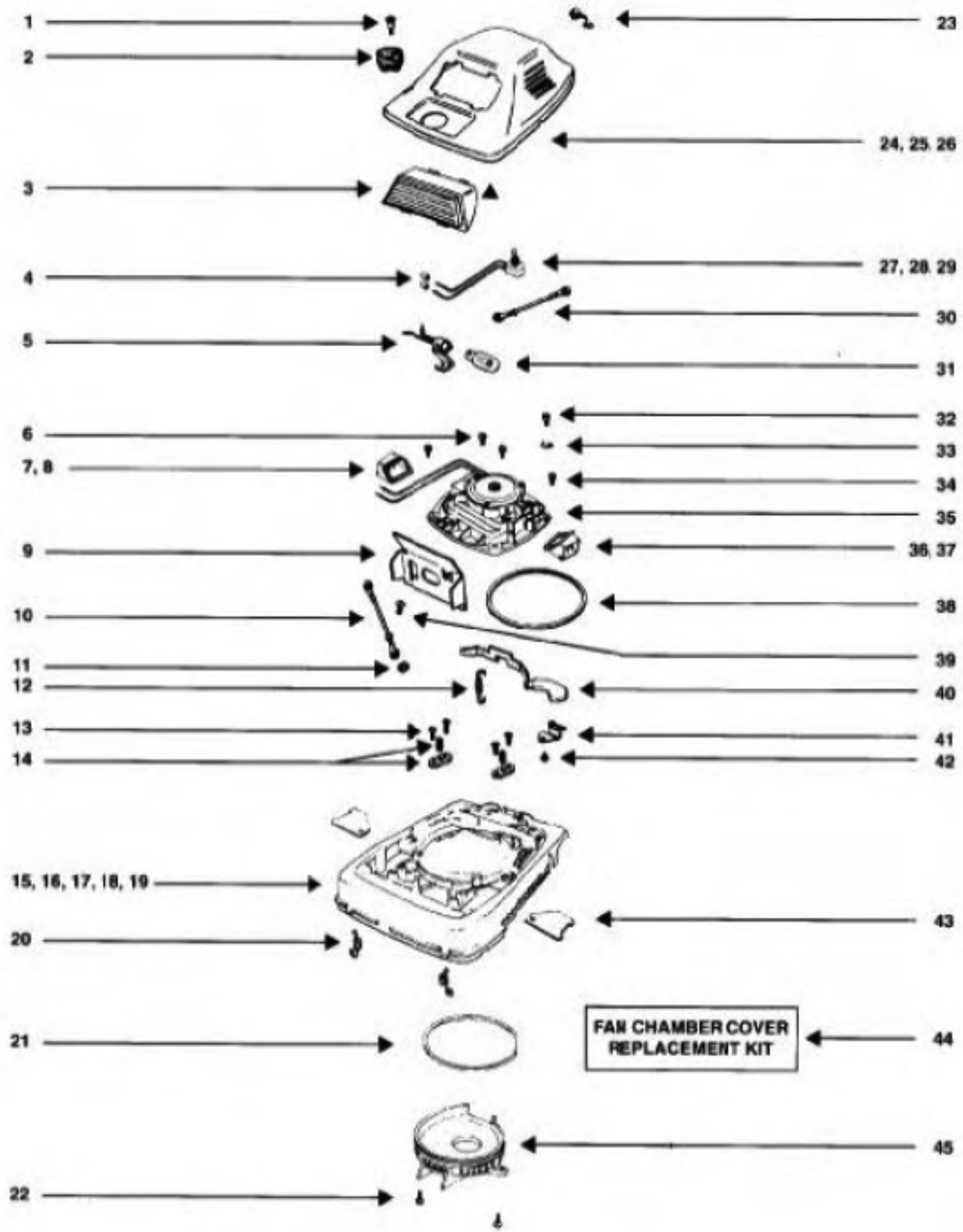
HANDLE - SC888J



HANDLE - SC888J

Ref #	Part	Description	Comments	Qty
1	35293-8	GRIP - HANDLE		
2	53574-1	RETNR PKG(UPPER&LOWER)BEIGE		
3	53198-1	HANDLE SCREW ASSY PACKAGE	Pkg of 6, 1 used.	
4	52370-12	CORD & TERMINAL ASSY-FB-5		
5	53238-11	SCREW PACKAGE	Pkg of 10, 1 used.	
6	38183-1SV	HANDLE SOCKET ASSEMBLY		
7	53213-5	NUTS - PACKAGE 10	Pkg of 10, 2 used.	
8	53145	BOLT PACKAGE (10)	Pkg of 10, 2 used.	
9	53077	SPRING - STRAIN RELIEF PK	Pkg of 5	
10	25329-16SV	HANDLE ASSEMBLY (UPPER)	Includes item 1.	
11	12637-8	TUBE - HANDLE (LOWER)		
12	53198-1	HANDLE SCREW ASSY PACKAGE	Pkg of 6, 1 used.	
13	53238-29	SCREW PACKAGE	Pkg of 10, 2 used.	
14	36439	SHIELD - HANDLE SOCKET		

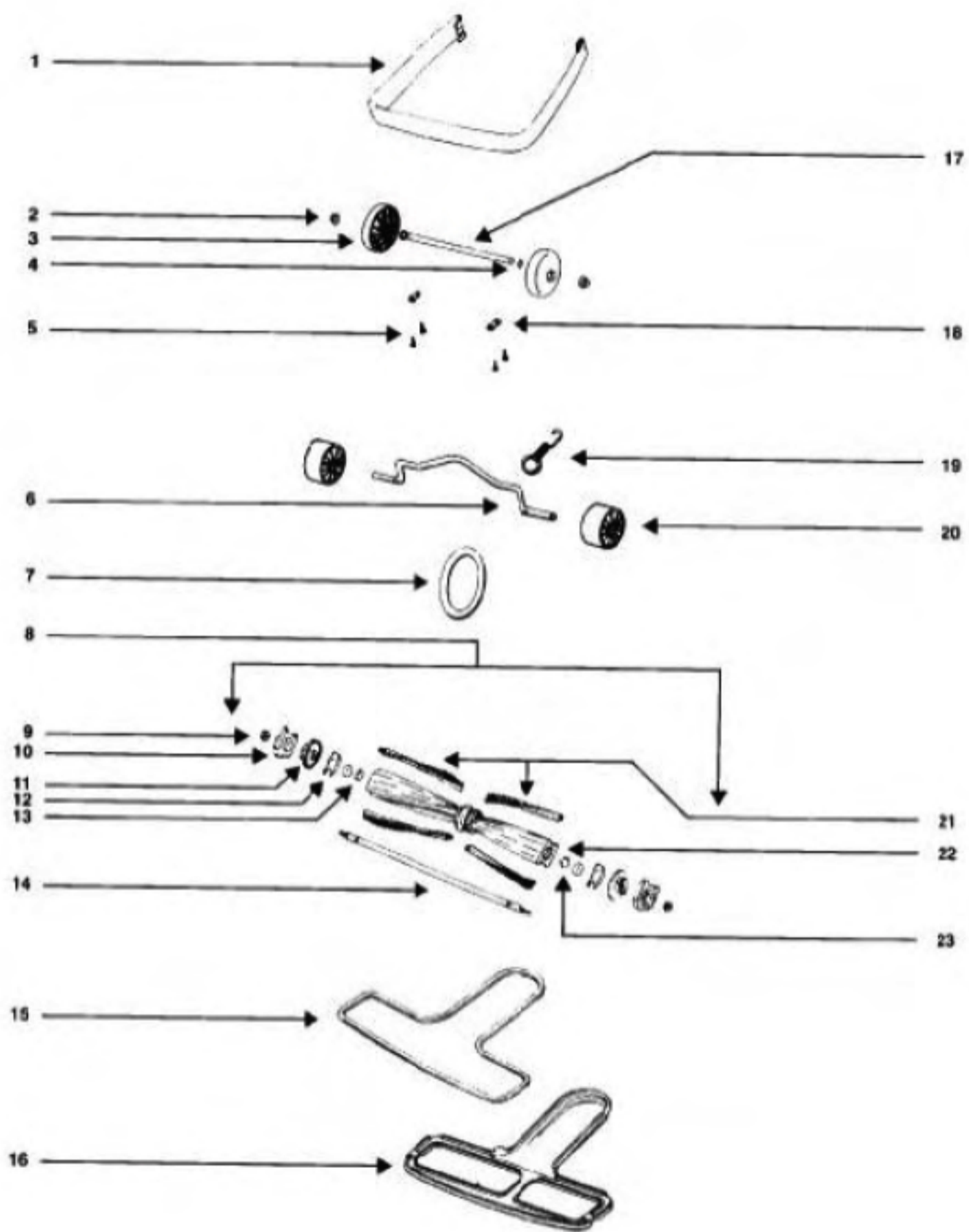
BASE HOOD - SC888J



BASE HOOD - SC888J

Ref #	Part	Description	Comments	Qty
1	53143	SCREW PACKAGE (10)	10	
2	26833-1	KNOB ASSEMBLY		
3	76290-1	LENS & HOUSING ASSEMBLY		
4	60192-1	WIRE SPLICE 5	Pkg of 5, 3 used.	
5	37514	HEADLAMP SOCKET ASSEMBLY		
6	53238-14	SCREW PACKAGE	Pkg of 10, 3 used.	
7	56379SV	DUCT ASSEMBLY (R)	Includes item 8.	
8	49052-3	TAPE - FOAM		
9	25461A	SHIELD - LIGHT		
10	55296	WIRE & TERMINAL ASSEMBLY		
11	53213-4	NUTS - PACKAGE 10	Pkg of 10, 1 used.	
12	53097	SPRING - FOOT PEDAL PKG (Pkg of 10, 1 used.	
13	53238-14	SCREW PACKAGE	Pkg of 10, 4 used.	
14	53140	CLAMP & SCREW ASSY PKG	Pkg of 6, 2 used.	
15	53474-8	BASE ASSEMBLY - CARTONED	Includes items 16,17,18 & 19.	
16	24964A-1	CAM (RIGHT)		
17	24965A-1	CAM (LEFT)		
18	53118	RIVET - SHOULDER PACKAGE		
19	53133	STL WASHERS-PKG (48495 (NLA)	Pkg of 10, 2 used.	
20	53117	SPRING - HOOD PACKAGE (10	Pkg of 10, 2 used.	
21	30517	GASKET - MOTOR SEAL		
22	53238-14	SCREW PACKAGE	Pkg of 10, 2 used.	
23	53122	STRAIN RELIEF BUSHING - P	Pkg of 10, 1 used.	
24	54098-1	HOOD & NAMEPLATE ASSY - P	Includes items 25 & 26	
25	37654	NAMEPLATE		
26	55754	DECAL (NLA)		
27	36409-13	SWITCH - PUSH		
28	53102	LOCKWASHER PACKAGE (10)	Pkg of 10, 1 used.	
29	55446	NUT - SWITCH		
30	54173-1	WIRE ASSY (GROUNDING)		
31	48815	LAMP - HEADLIGHT		
32	53228-2	SCREWS - PACKAGE 10		
33	53160	CABLE CLAMP PACKAGE	Pkg of 5, 1 used.	
34	53238-29	SCREW PACKAGE	Pkg of 10, 1 used.	
35	54352-3	MOTOR ASSEMBLY - PACKAGED		
36	56380SV	DUCT ASSEMBLY (L)	Includes item 37.	
37	49052-3	TAPE - FOAM		
38	30517	GASKET - MOTOR SEAL		
39	53228-2	SCREWS - PACKAGE 10		
40	24834A-3	PEDAL - FOOT		
41	37034	SPRING - ADAPT RETAINER		
42	53228-2	SCREWS - PACKAGE 10		
43	36263	COVER - WHEEL		
44	52334	FAN CHAMBER REPLACEMENT K	Includes items 21,22 & 45	
45	13770-1	COVER - FAN SCROLL		

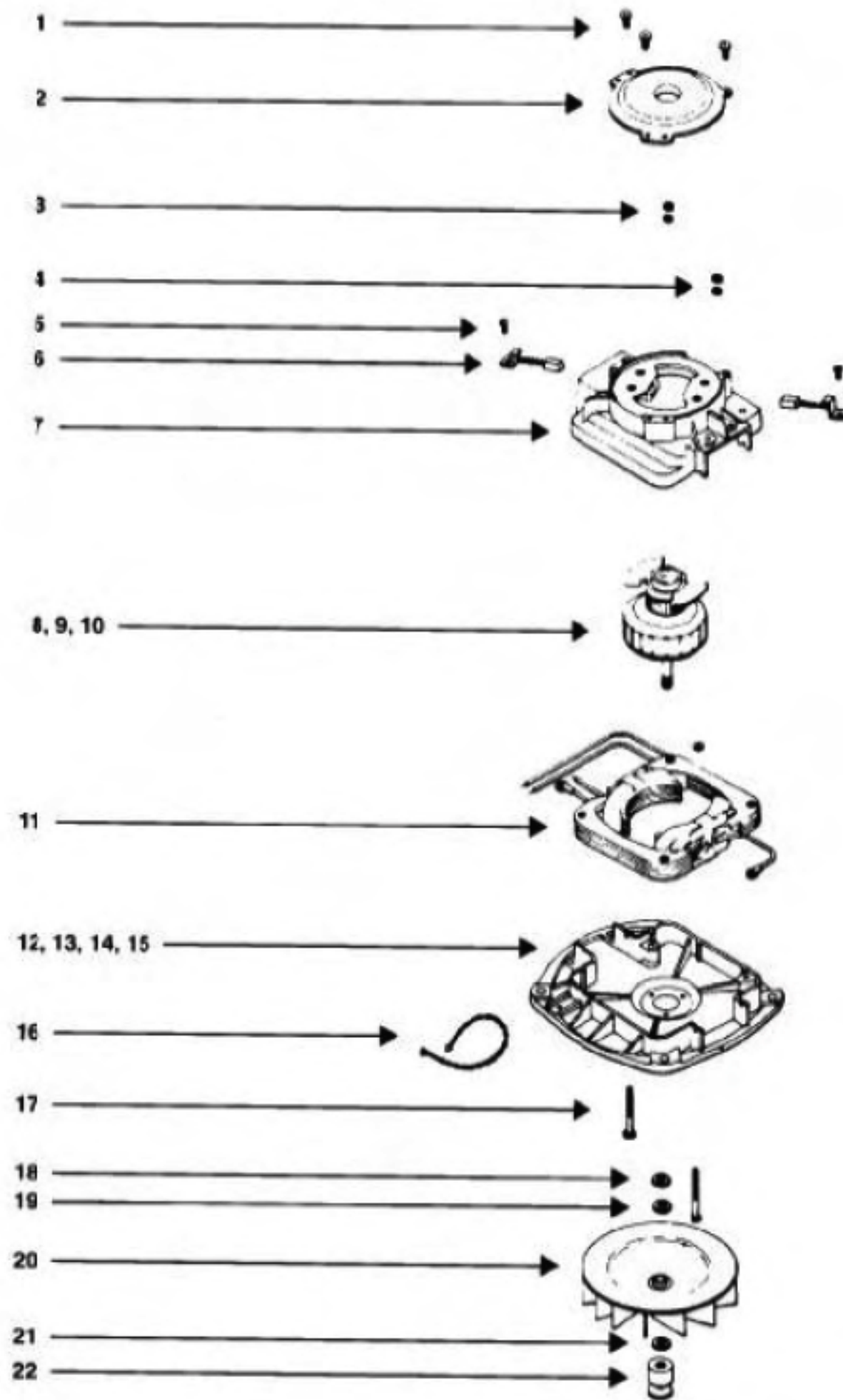
BRUSHROLL - SC888J



BRUSHROLL - SC888J

Ref #	Part	Description	Comments	Qty
1	28504-1	GUARD - FURNITURE		
2	53121	PUSH NUT PACKAGE (10)		
3	26242-119N	WHEEL - REAR		
4	53110	WASHER - WHEEL PACKAGE (1)	Pkg of 10, 2 used.	
5	53238-11	SCREW PACKAGE	Pkg of 10, 4 used.	
6	35947A	AXLE - FRONT		
7	52100B	BELT PKG ASSY (UPRIGHT)	Pkg of 2	
8	54555	DISTURBULATOR ASSY - CART	Includes items 9,10,11,12,13,14,21,22 & 23	
9	53158	LOCK NUT PACKAGE	Pkg of 10, 2 used.	
10	26059A	CAP - COVER		
11	26058A	CAP - DISTURBULATOR		
12	35728A-1	PLATE - COVER		
13	53114	BEARING - DISTURBULATOR P		
14	35663A	SHAFT - DISTURBULATOR		
15	46538	TAPE-FOAM (use 46538-4)		
16	25922-1	BOTTOM PLATE ASSEMBLY	Includes item 15.	
	60161	WHEEL & AXLE ASSY	Includes items 2,3,4 & 17	
17	37183	AXLE - REAR		
18	53201	AXLE CLAMP - PACKAGED		
19	53076-2	SPRING & AXLE PACKAGE (6)	Pkg of 6, 1 used.	
20	35859A-1	WHEEL - FRONT		
21	52140	PACKAGED - BRISTLE STRIP		
23	53115	PACKAGE - TOLERANCE RING	Pkg of 10, 2 used.	

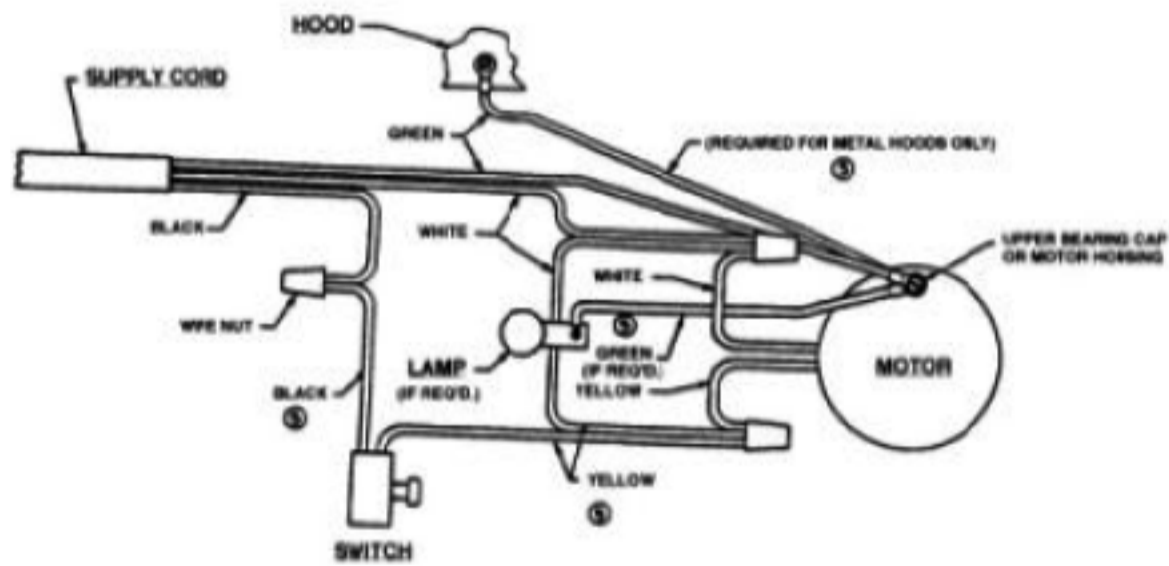
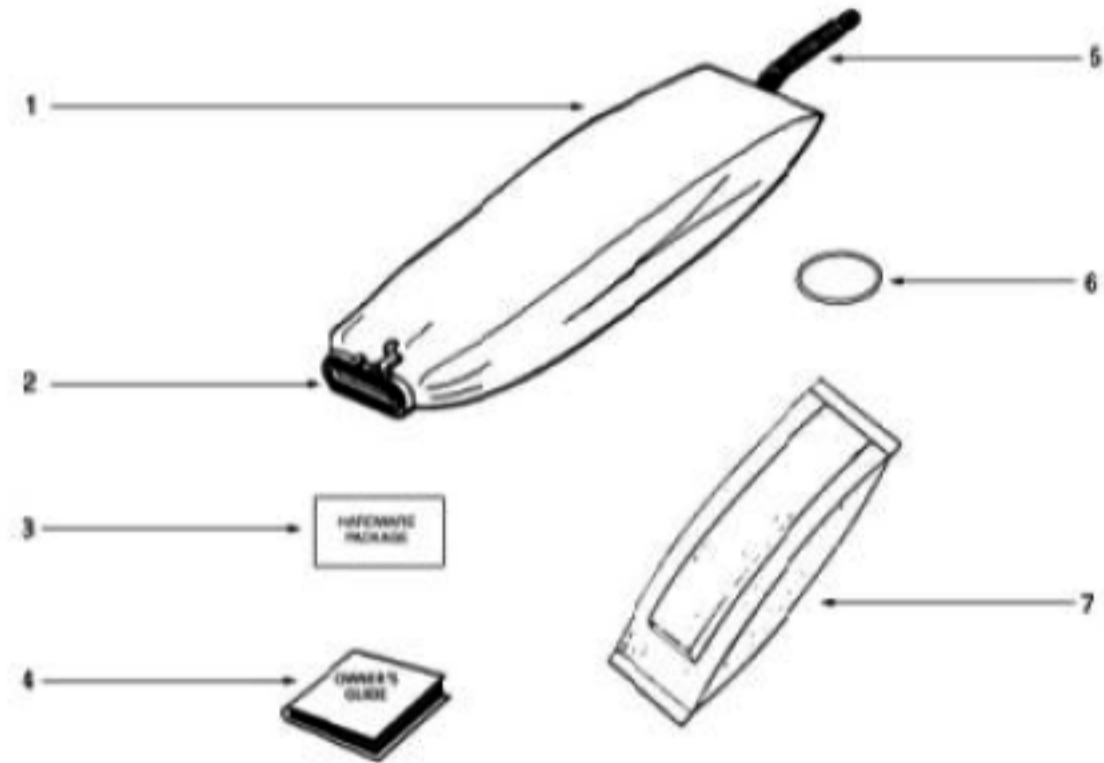
MOTOR - SC888J



MOTOR - SC888J

Ref #	Part	Description	Comments	Qty
1	53138	SCREWS - PACKAGE 10	10, 10, 3 used.	
2	20217E	RETAINER - UPPER BEARING	↓	
3	53213-4	NUTS - PACKAGE 10	Pkg of 10, 4 used.	
4	53222-4	LOCKWASHERS - PACKAGE 10		
5	53219-2	SCREWS - PACKAGE 10		
6	30478	MOTOR BRUSH ASSEMBLY		
7	54396	MOTOR COVER ASSEMBLY - LA		
8	54425-3	KIT - ARMATURE REPLACEMENT	Includes items 9 & 10	
9	53088-5	BALL BEARING - PACKAGE	Pkg of 5, 1 used.	
10	30474A	FAN - MOTOR COOLING		
11	53441-2	FIELD ASSEMBLY - PACKAGED		
12	54169-1	MOTOR BASE ASSEMBLY	includes items 13, 14 & 15	
13	54412	Discontinued, use 54412-1		
14	53088-5	BALL BEARING - PACKAGE	Pkg of 5, 1 used.	
15	53187-1	RIVET PACKAGE	Pkg of 10, 3 used.	
16	46713-1	TIE - CABLE (PURCHASED)		
17	53142	SCREW PACKAGE (10)	Pkg of 10, 1 used.	
18	53188-1	WASHER PACKAGE	Pkg of 10, 1 used.	
19	53148	WASHER - FAN PACKAGE (10)	Pkg of 10, 1 used.	
20	12988	FAN BLOWER - MOTOR		
21	53148	WASHER - FAN PACKAGE (10)	Pkg of 10, 1 used.	
22	37012-2	PULLEY - MOTOR DRIVE		

Bag & Wiring - SC888J



36575 WIRING DIAGRAM

Bag & Wiring - SC888J

Ref #	Part	Description	Comments	Qty
1	53469-23	ZIPPER BAG ASSY - PACKAGE		
2	77491	DIRT TUBE & OVERMOLD ASSE		
3	49461B-4SV	HARDWARE PKG - COMM UPRIG		
4	78091			
5	47722	SPRING - BAG		
6	48410	SPRING - GARTER		
7	63213	UPR ST DUSTBAG W/A&H PATC		
	78221	ZIPPER HANDLE CHAIN ASSEM		