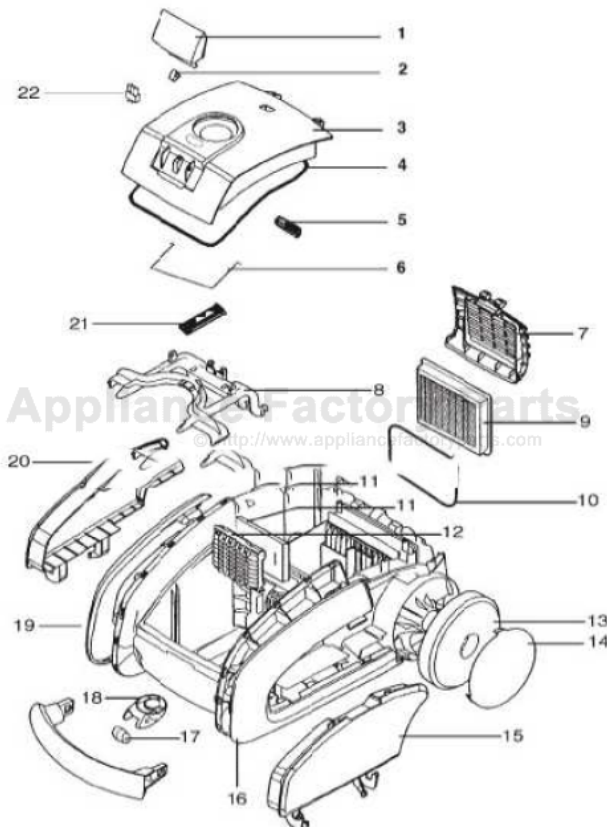


This Owner's Manual is provided and hosted by [Appliance Factory Parts](http://www.appliancefactoryparts.com).



# SANITAIRE SP6952AC Owner's Manual

[Shop genuine replacement parts for SANITAIRE  
SP6952AC](#)

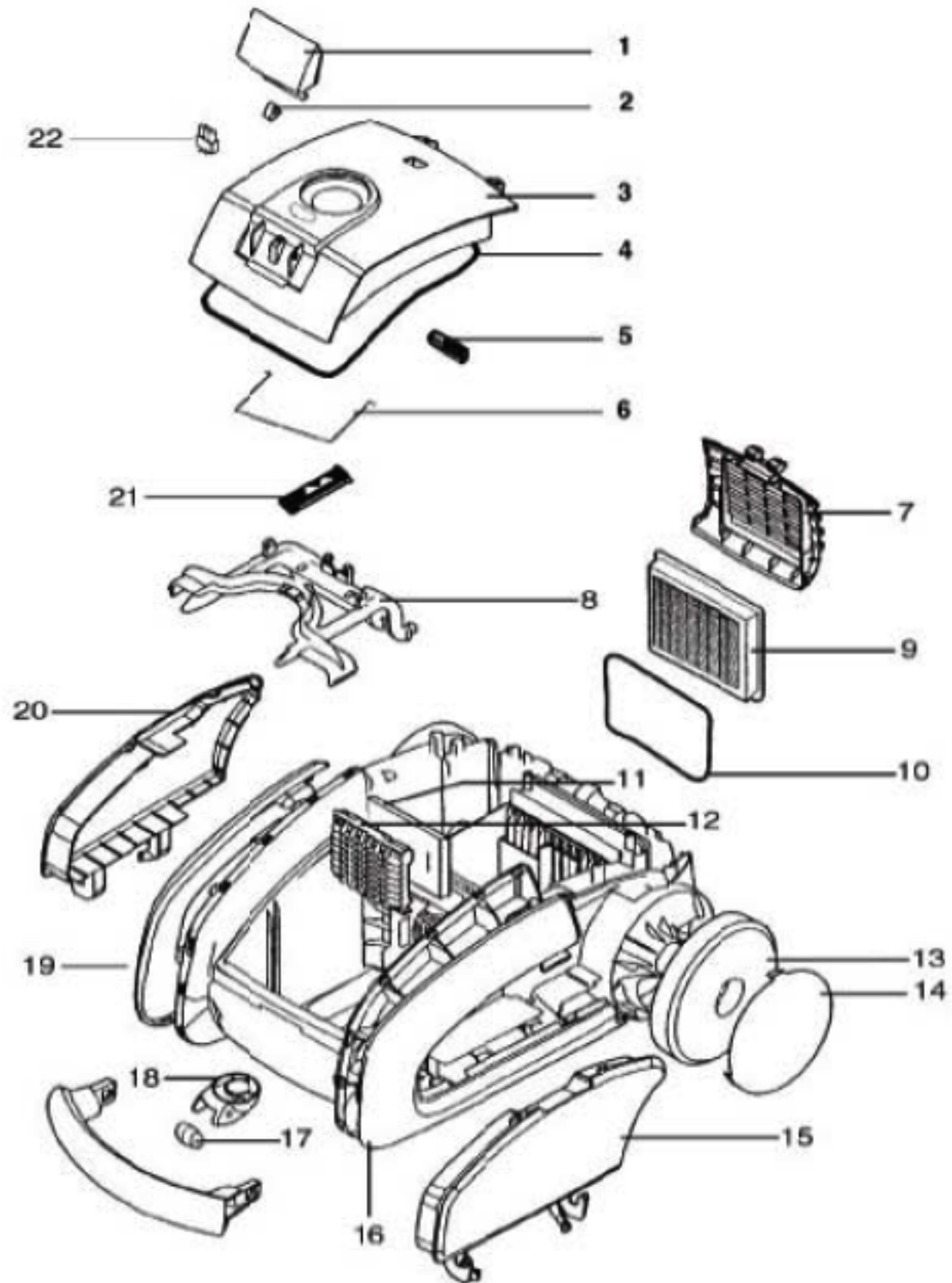


[Find Your SANITAIRE Vacuum Cleaner Parts - Select From 78 Models](#)

----- Manual continues below -----

# Canister - SP6952AC

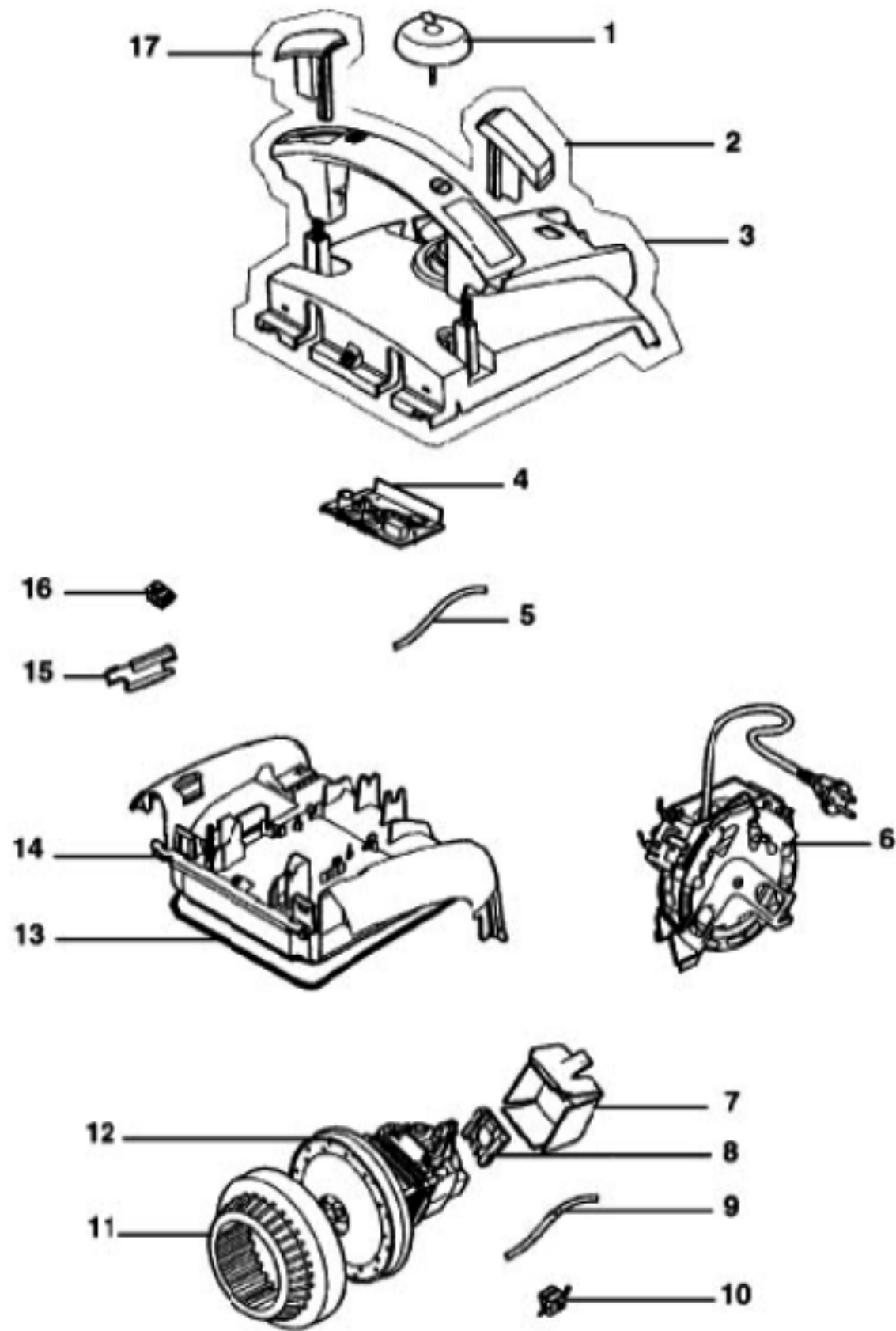
May show more parts than really exists



Canister - SP6952AC

Ref #	Part	Description	Comments	Qty
1	39805-355N	BAG COVER LATCH		
2	6681008-10	LATCH SPRING		
3	39803-1	BAG COVER & GRAPHICS ASSE		
4	1096847-01	GASKET - DUST BAG		
5	39807	Bag Change Indicator		
6	1096522-01	HOOK - WIRE		
7	39817-410P	FILTER COVER		
8	39838-380N	BAG HOLDER		
9	SP012W	SYSTEM PRO WASHABLE FILTER		
10	1130289-01	SEAL		
11	39811	MOTOR FILTER		
12	39810-380N			
13	39826-355N	REAR WHEEL - OVERMOLD		
14	39831-410P	REAR WHEEL COVER (PAINTED		
15	39906-1	LEFT COVER AND GRAPHICS A		
16	39797-355N			
17	39828-380N	FRONT WHEEL		
18	39827-355N	FRONT WHEEL HOLDER		
19	39798-355N			
20	39907-1	RIGHT COVER AND GRAPHICS		
21	39808-380N			
22	39806-380N	This part is obsolete and there is no substitute available.		

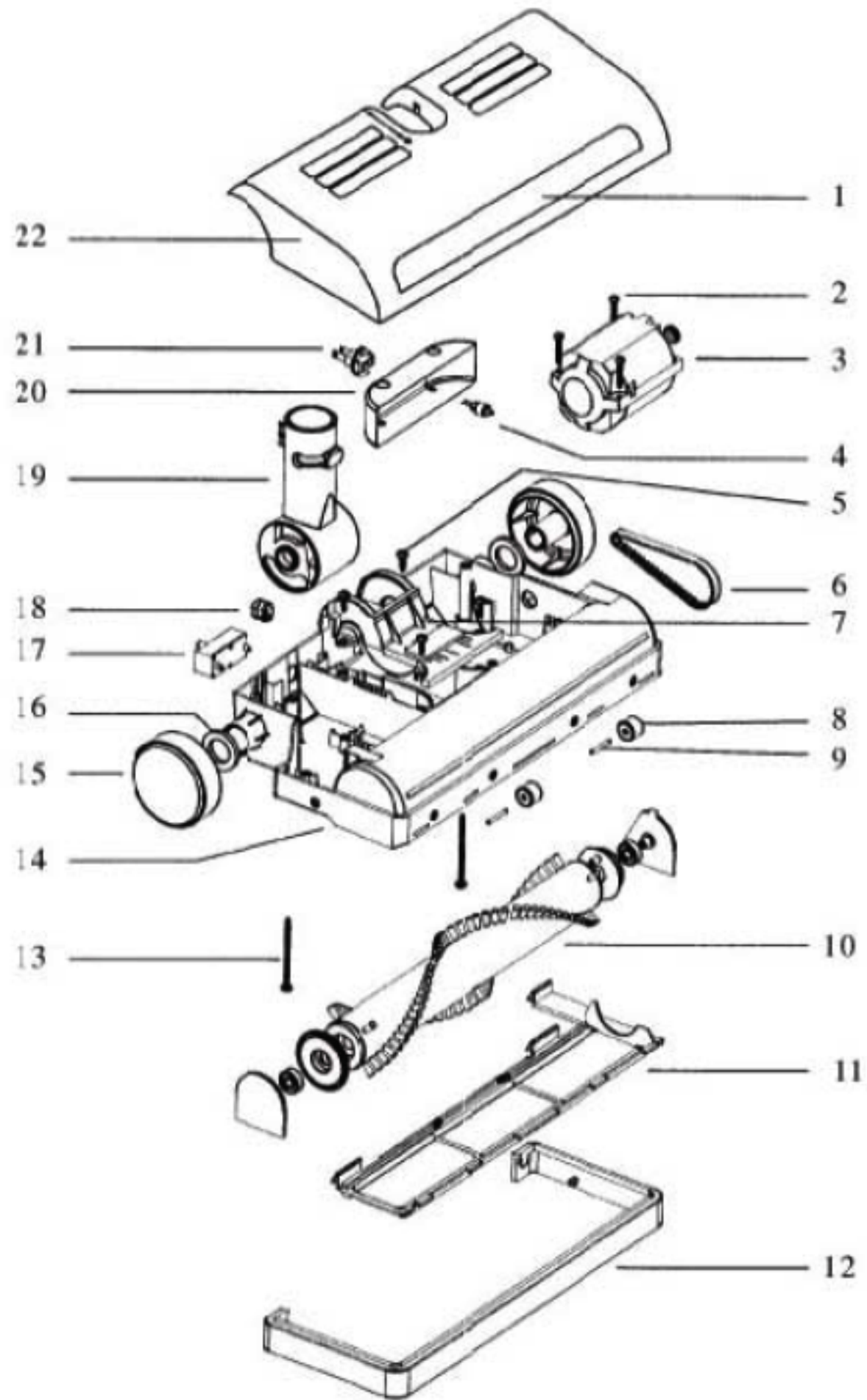
73992 Thermostat & Terminal Assy - Not Illustrated



Motor - SP6952AC

Ref #	Part	Description	Comments	Qty
1	39822-355N	Speed Control Knob		
2	39823-355N			
3	2190494-08	Circuit Board		
4	1096837-06	HOSE - COOLING (L230)		
5	39825	CORD REEL		
6	1096471-00	MOTOR ADAPTER, VM3		
7	2196205-01	SUSPENSION BLOCK D		
8	2191082-01	HOSE - COOLING (CW)		
9	1096954-01	WIRE SEAL		
10	1096831-02	SEAL - BLOWER (VM3)		
11	39848	VM3 MOTOR ASSEMBLY (11287		
12	1096947-01	GASKET - HOOD		
13	39812-355N	REAR HOUSING		
14	6698086-36	SWITCH-PUSH BUTTON		
15	39823-355N			

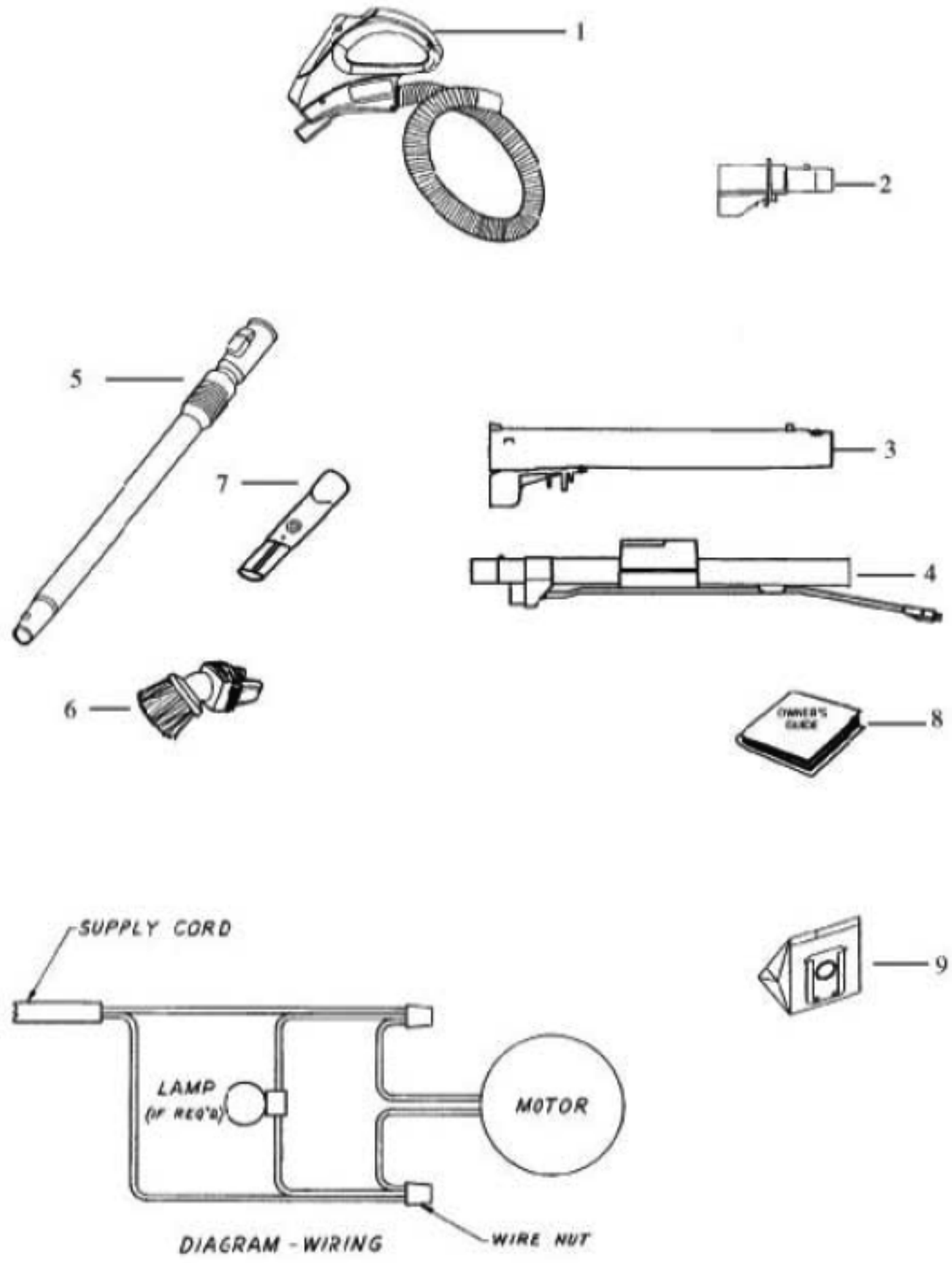
Powerhead - SP6952AC



## Powerhead - SP6952AC

Ref #	Part	Description	Comments	Qty
1	665200	WINDOW		
2	345500	MOTOR ASSY SCREW FOR PREM/IMP		
3	155209	POWERHEAD MOTOR "ADVOCATE"		
4	395123	LAMP HALOGEN 12V 20W		
5	345502	8X1/2" SOCKET COVER SCREW		
6	155555	BELT - COGGED		
7	665110	BRUSHROLL COVER		
8	665129			
9	205000	SHAFT - ROLLER		
10	665133	BRUSHROLL ASSY		
11	665229	COVER		
12	665226	BUMPER		
13	665129			
14	665183	BASE ASSY		
15	665131	WHEEL ASSY.		
16	665210	WASHER FELT		
17	320004	BRKR: 2.5 AMP		
18	340651	CORD STRAIN RELIEF PREM/IMP		
19	665128	NECK		
20	505328			
21	395124	HOLDER G4 HALOGEN LAMP		
22	665263			
23	325406	Cord EZ Supply	Not pictured.	

Accessories - SP6952AC



Accessories - SP6952AC

Ref #	Part	Description	Comments	Qty
1	62360-1	SWIVEL HOSE ASSY		
2	39041	COUPLING ASSY - EASY CHAN		
3	37738-7	BUTTON COVER WAND		
4	39040A-2	EZ FOR POWERHEAD-USE 155465		
5	39844	TELESCOPIC WAND ASSY.		
6	39842	TOOL COMBINATION		
7	39843	TELESCOPIC WAND		
8	73410			
9	SP200	SYSTEM PRO S BAG	Pkg of 5	