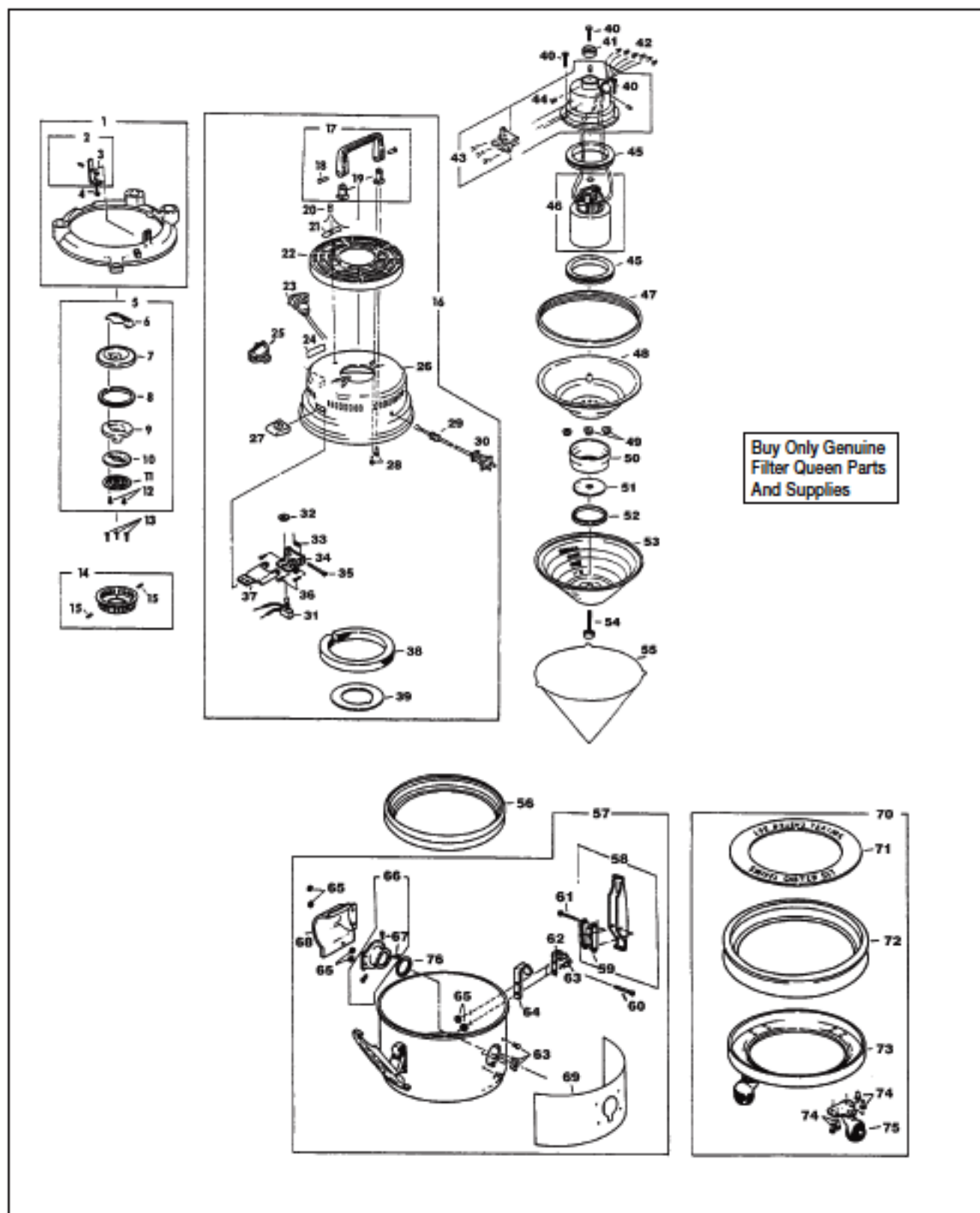


FILTER QUEEN

Original & Replacement

TRIPLE CROWN Models 99, 99A
Top Dome & Dirt Container Assembly



Original & Replacement

FILTER QUEEN

TRIPLE CROWN Models 99, 99A Top Dome & Dirt Container Assembly

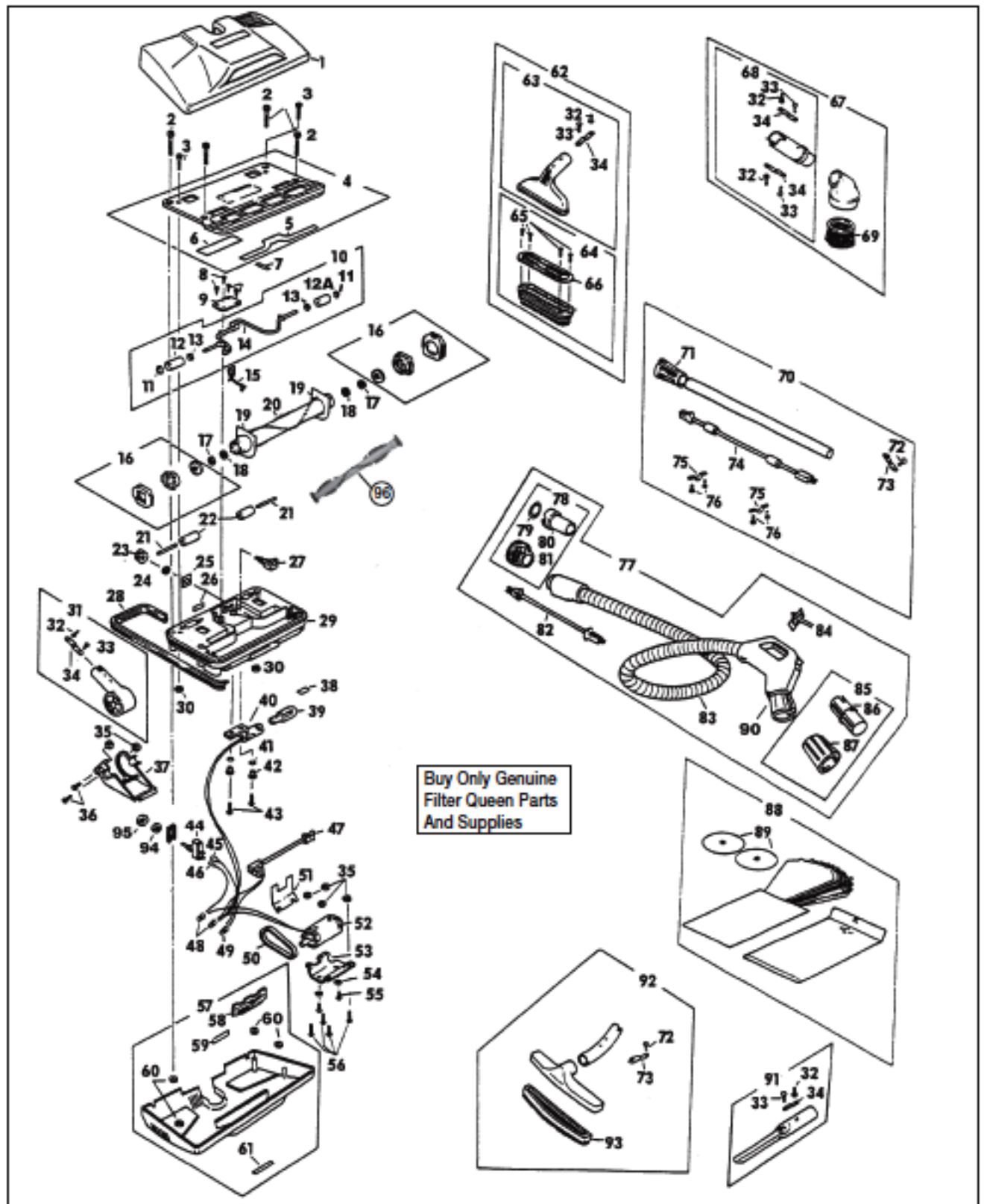
KEY	PART NO.	DESCRIPTION	KEY	PART NO.	DESCRIPTION
1	FQ-9561	Attachment Holder Ass'y	41	NLA	Motor Protective Screen
2	FQ-7201	Spring & Pin Ass'y	42	SS-3270	Wire Nut
3	FQ-72348	Lockwasher	43	FQ-3172	Upper Motor Support & Pin Ass'y
4	FQ-72008	Screw	44	FQ-33514	Connector Pin
5	FQ-9573-3	Dome Cover & Handle Ass'y, Black	45	FQ-350060	Motor Support Gasket
6	NLA	Dome Cover Handle (Order FQ-9573-3)	46	FQ-3309C	Motor, 2 Speed, 4 Wire
7	FQ-95651-3	Dome Cover	47	FQ-31775	Dome Gasket
8	FQ-31776	Dome Cover Gasket	48	FQ-31769	Lower Motor Support
9	FQ-95650	Inner Dome Cover Stamping	49	FQ-31146	Nut
10	FQ-500790	Air Scent Felt Pad	50	NLA	Secondary Filter Support
10	FQR-1820	Air Scent Felt Pad	51	FQ-95450	Secondary Filter
11	FQ-500793	Felt Retainer Spring	51	FQR-1800	Filter, Secondary Paper
12	FQ-31795	Handle Screw	52	FQ-95798	Secondary Filter Support Ring
13	NLA	Screw	53	FQ-31770	Cone Support
14	FQ-35071-3	Connector Stamping & Pin Ass'y	54	FQ-350712	Cone Retainer Screw
15	NLA	Locking Pin	55	FQ-50047	Filter Cone, Paper 12 Pk
16	N/A	Complete Dome Ass'y	55	FQR-1400	Filter Cone, Paper 12 Pk
17	FQ-9966	Handle & Bracket Ass'y	56	FQ-200430	Dirt Container Gasket
18	NLA	Rivet	57	NLA	Dirt Container Ass'y, 99 Plastic
19	FQ-95611	Handle Bracket	57	NLA	Dirt Container Ass'y, 99A Metal
20	FQ-99835	Light	58	FQ-3174	Tank Clamp Ass'y
21	FQ-99706	Light Decal	59	NLA	Clamp Link (Order FQ-3174)
22	FQ-95645-3	Grille	60	NLA	Spring Rivet
23	FQ-33321M	Outlet	61	NLA	Clamp Rivet
24	FQ-99706	Outlet Decal	62	FQ-500779	Clamp Spring
25	FQ-34008	Rocker Switch	63	NLA	Rivet
26	NLA	Dome	64	FQ-500778	Clamp Spring Stamping
27	FQ-99749	Switch Lever Pad	65	FQ-11246	Washer
28	FQ-33719	Screw	66	FQ-35043	Container Inlet & Pin Ass'y
29	NLA	Strain Relief	67	NLA	Bag Inlet Pin
30	FQ-95301	Attachment Cord	68	FQ-200451	Deflector Stamping
31	FQ-31302	Switch	69	NLA	Dirt Container Label
31	FA-3400	Switch, Step On W/15" Leads	70	FQ-9562A	Dolly Complete Ass'y
32	FQ-153318	Switch Lockwasher	71	FQ-95905	Protective Shield
33	FQ-50072	Switch Lever Spring	72	NLA	Bumper
34	FQ-500747	Switch Bracket	73	FQ-95780	Castor Plate
35	FQ-350751	Switch Lever Hinge Pin	74	FQ-57784	Rivet
36	FQ-133054	Rivet	75	NLA	Castor (Order FQ-9562A)
37	FQ-500750	Switch Lever	76	FQ-92407	Inlet Gasket
38	FQ-1800	Filter Ring, Poly Fiber			
38	FQR-1815	Filter Ring, Poly Fiber			
38	FQR-1810	Filter Bat, Foam			
39	FQ-31791	Filter Support			
40	NLA	Screw			

N/A = Not Available NLA = No Longer Available

FILTER QUEEN

Original & Replacement

TRIPLE CROWN Model CA96 POWER NOZZLE



Original & Replacement **FILTER QUEEN**

TRIPLE CROWN Model CA96 POWER NOZZLE

KEY	PART NO.	DESCRIPTION	KEY	PART NO.	DESCRIPTION
1	FQ-9625-3	Nozzle Cover Ass'y	50	FQR-1050	Belt
2	FQ-88208	Nozzle Base Screw	51	FQ-88308	Insulator
3	FQ-88215	Bottom Plate Screw	52	FQ-8808	Motor
4	FQ-8824	Bottom Plate Ass'y	52	FQR-6050	Motor, Power Nozzle
5	FQ-88280	Sealing Gasket	53	FQ-48217A	Motor Bracket
6	N/A	Instruction Label	54	FQ-42348	Lockwasher
7	FQ-88279	Sealing Gasket Strip	55	FQ-48218	Motor Mounting Screw
8	FQ-56237	Retainer Plate Screw	56	NLA	Motor Bracket Screw
9	FQ-48282	Roller Arm Retainer Plate	57	FQ-9625-3	Nozzle Cover Ass'y
10	FQ-8822	Roller Arm Ass'y	58	FQ-88230RB	Lens
11	FQ-48276	Roller Retaining Cap	59	FQ-96765	Warning Label
12	FQ-52283R	Right Roller	60	FQ-48207	Grommet
12A	FQ-52283L	Left Roller	61	NLA	Name Plate
13	FQ-48243	Washer	62	FQ-9627-3	Complete 6" Nozzle & Brush Ass'y
14	FQ-88281	Roller Arm	63	NLA	6" Nozzle & Pin Ass'y (Order FQ-9627-3)
15	FQ-88284	Roller Arm Spring	64	FQ-9629	6 Brush Ass'y
16	FQ-5223*	Brush Bearing Ass'y	65	FQ-33237	Screw
16	FQR-2050*	Brush Bearing Ass'y	66	FQ-66858	Brush Clamp Plate
17	FQ-48216	Fiber Washer	67	FQ-9682-3	Complete Round Brush Ass'y
18	FQ-48246	Steel Washer	68	NLA	Adaptor Ass'y (Order FQ-9682-3)
19	FQ-88228	Dirt Seal Washer	69	FQ-33806	Bristled Insert
20	NLA	Revolving Brush (Order FQ-2000)	69	EXR-5350	Dust Brush Insert, Horse Hair
20	FQR-2040	Brushroll Complete With Ball Bearing Ends	70	FQ-9630-3	Straight Wand Ass'y W/Cord
21	FQ-88249	Roller Shaft	71	FQ-96842-3	Tube Seal
22	FQ-88248	Rear Roller	72	NLA	Rivet
23	FQ-96221	Height Adjustment Knob	73	NLA	Retainer Spring W/Pin
24	FQ-52222	Retainer Ring	74	FQ-9636T	Wand Cord
25	FQ-96244	Cam Indicating Plate	75	FQ-48305	Cord Clip
26	N/A	Circuit Breaker Label	76	FQ-48329	Rivet
27	FQ-52225	Cam	77	FQ-9684-3	Complete Hose Ass'y 6"
28	FQ-RB88201	Bumper	78	FQ-9680-3	Connector Ass'y
29	FQ-88209	Nozzle Base W/Onserts	79	FQ-3407	Hose Gasket
30	FQ-88213	Washer	80	FQ-4888	Connector Tube
31	FQ-9687-3	Swivel Adaptor Ass'y	81	N/A	Connector Cover (Order FQ-9680-3)
32	FQ-154232	Retainer Pin	82	FQ-96821	Male/Female Pigtail
33	FQ-133054	Rivet	83	N/A	Hose Blank (Order FQ-9684-3)
34	FQ-350321	Retainer Spring	84	FQ-9001	Switch
35	FQ-48207	Nut	85	FQ-9081	Adaptor Tube Ass'y
36	FQ-33719	Screw	86	N/A	Adaptor Tube (Order FQ-9081)
37	FQ-88211	Adaptor Retainer, Black	87	FQ-96842-3	Tube Seal
37	FQR-7200	Adaptor Retainer, Black	88	FQ-50047	Filter Cone, Paper 12 Pk
38	N/A	Lamp Warning Label		FQR-1400	Filter Cone, Paper 12 Pk
39	FQ-88235	Lamp, 15 Watt	89	FQ-95450	Secondary Filter
39	FA-3515	Bulb, 15 Watt		FQR-1800	Filter, Secondary Paper
40	FQ-8835	Lamp Socket	90	FQ-9010	Female Receptacle
41	FQ-88345	Eyelet	91	FQ-9679-3	Crevice Tool Ass'y
42	FQ-88324	Grommet	92	FQ-9681-3	10" Bare Floor Tool Ass'y
43	FQ-31215	Lamp Socket Screw	93	NLA	Bristled Insert
44	FQ-8831	Circuit Breaker	93	NLA	Brush Insert, Floor Tool 10"
45	FQ-88029-5	Lead Wire, Red	94	NLA	Circuit Breaker Washer
46	FQ-88029-3	Lead Wire, Black	95	NLA	Circuit Breaker Nut
47	FQ-3055	Power Nozzle Cord W/Strain Relief	96	FQ-2000	Brushroll Complete With Ball Bearing Ends
48	SS-3270	Wire Nut			Brushroll Complete With Ball Bearing Ends
49	SS-3272	Wire Nut			
50	FQ-48260	Belt	96	FQR-2040	

* THESE BRUSHROLL BEARINGS ONLY FIT
SLEEVE BEARING BRUSHROLLS

N/A = Not Available. NLA = No Longer Available