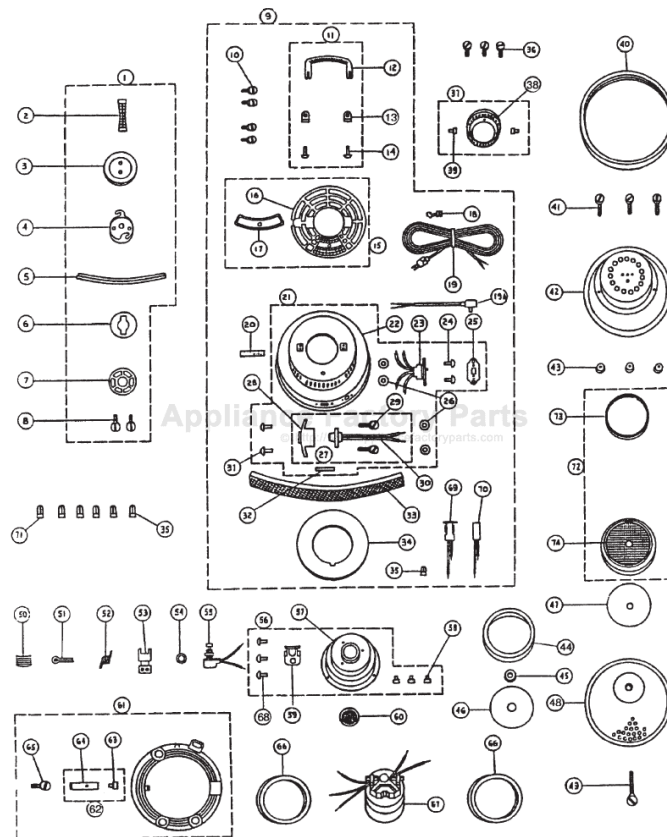


Filter Queen AN95X Owner's Manual

[Shop genuine replacement parts for Filter Queen AN95X](#)



[Find Your Filter Queen Vacuum Cleaner Parts - Select From 23 Models](#)

----- Manual continues below part list -----

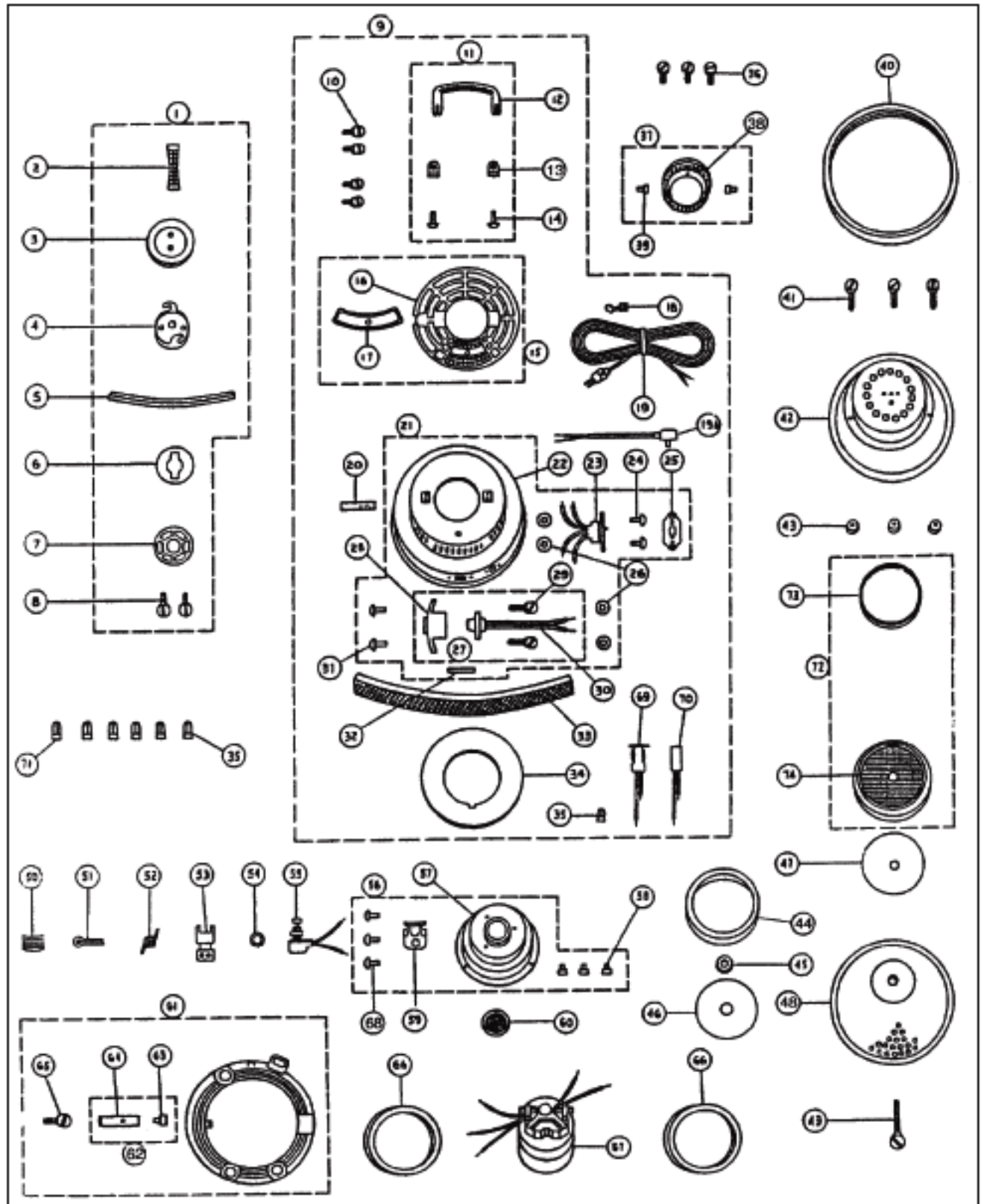
Available Replacement Parts for Filter Queen AN95X

FQR-1050	BELT FOR FILTER QUEEN 1 PACK
FQR-1400	FILTER QUEEN FILTER CONE PAPER BAGS
FA-3515	LAMP T4840
Fa-3400	switch " step on 1 Inch Leads.
FQ-6201	LOWER MOTOR MOUNT ASSY
FQr-1815	Filter ring .
FQ-96821	Cord Pigtail, Male/Female, 10.5 Inch Bla
FQ-3174	Clamp Assy with Spring .

FILTER QUEEN

Original & Replacement

Top Dome Assembly



Original & Replacement **FILTER QUEEN**

Top Dome Assembly

KEY	BROWN MODELS 31X, D31X, D33	GRAY PRINCESS RN92, PNG92	DARK GRAY MAJESTIC AN95-X	DESCRIPTION
1	NLA	FQ-9273	NLA	Dome Cover Ass'y
2	NLA	FQ-92314	NLA	Handle
3	NLA	NLA	NLA	Outer Dome Cover (Order Key #1)
4	FQ-95650	FQ-95650	FQ-95650	Inner Dome
5	FQ-31776	FQ-31776	FQ-31776	Dome Sealing Gasket
6	FQ-500790	FQ-500790	FQ-500790	Air Scent Felt Pad
6	FQR-1820	FQR-1820	FQR-1820	Air Scent Felt Pad
7	FQ-500793	FQ-500793	FQ-500793	Felt Retainer Spring
8	FQ-31795	FQ-31795	FQ-31795	Screw For Handle
9	FQ-3160-4	FQ-9260	FQ-9560	Complete Dome Ass'y
9	NLA	N/A	N/A	Complete Dome, Chrome
9	NLA	N/A	N/A	Complete Dome, D33
10	FQ-33719	FQ-33719	FQ-33719	Screw For Bracket
11	FQ-35066	FQ-9966	FQ-9566	Handle And Bracket Ass'y
12	NLA	NLA	NLA	Handle (Order Key #11)
13	NLA	NLA	NLA	Handle Bracket (Order Key #11)
14	NLA	NLA	NLA	Rivet (Order Key #11)
15	NLA	FQ-9267	NLA	Decorative Grill W/Name Plate
15	NLA	N/A	N/A	Decorative Grill Chrome
16	NLA	NLA	FQ-95645-3	Decorative Grill
17	NLA	NLA	NLA	Light Decal/Nameplate
18	NLA	NLA	NLA	Cord Strain Relief
19	FQ-31301	FQ-92301 (II)	FQ-95301	Attachment Cord 20'
19	N/A	NLA	N/A	Attachment Cord 25'
19	FA-3076	FA-3076	FA-3076	Attachment Cord 25'
19A	NLA	NLA	NLA	Cord For Rewind
20	FQ-31767	FQ-92767	FQ-92767	Warning Label
21	FQ-3339	NLA	FQ-9539	Dome Ass'y
21	FQ-3139	N/A	N/A	Dome Ass'y, Painted
22	NLA	NLA	NLA	Dome
23	FQ-3331 (2 SP)	FQ-31302 (1 SP)	FQ-3331 (2SP)	Switch Ass'y
24	NLA	NLA	NLA	Rivet
25	NLA	NLA	NLA	Indicating Plate
25	NLA	N/A	N/A	Indicating Plate
26	FQ-11246	FQ-11246	FQ-11246	Washer
27	NLA	NLA	FQ-9532	Outlet & Holder Ass'y
28	FQ-95350	FQ-95350	FQ-95350	Outlet Holder
29	FQ-31320	FQ-31320	FQ-31320	Screw
30	FQ-33321	FQ-33321	FQ-33321	Outlet
31	FQ-133054	FQ-133054	FQ-133054	Rivet
32	NLA	NLA	NLA	Outlet Label
33	FQ-1800	FQ-1800	FQ-1800	Filter Ring, Poly Fiber
33	FQR-1815	FQR-1815	FQR-1815	Filter Ring, Poly Fiber
33	NLA	NLA	NLA	Filter Bat, Foam
34	FQ-31791	FQ-31791	FQ-31791	Filter Bat Support
35	FQ-239760	FQ-239760	FQ-239760	Solderless Connector
35	SS-3270	SS-3270	SS-3270	Wire Nut
36	NLA	NLA	NLA	Screw
37	NLA	FQ-9271	NLA	Connector Stamping & Pin Ass'y
38	NLA	NLA	NLA	Connector Stamping (Order Key #37)

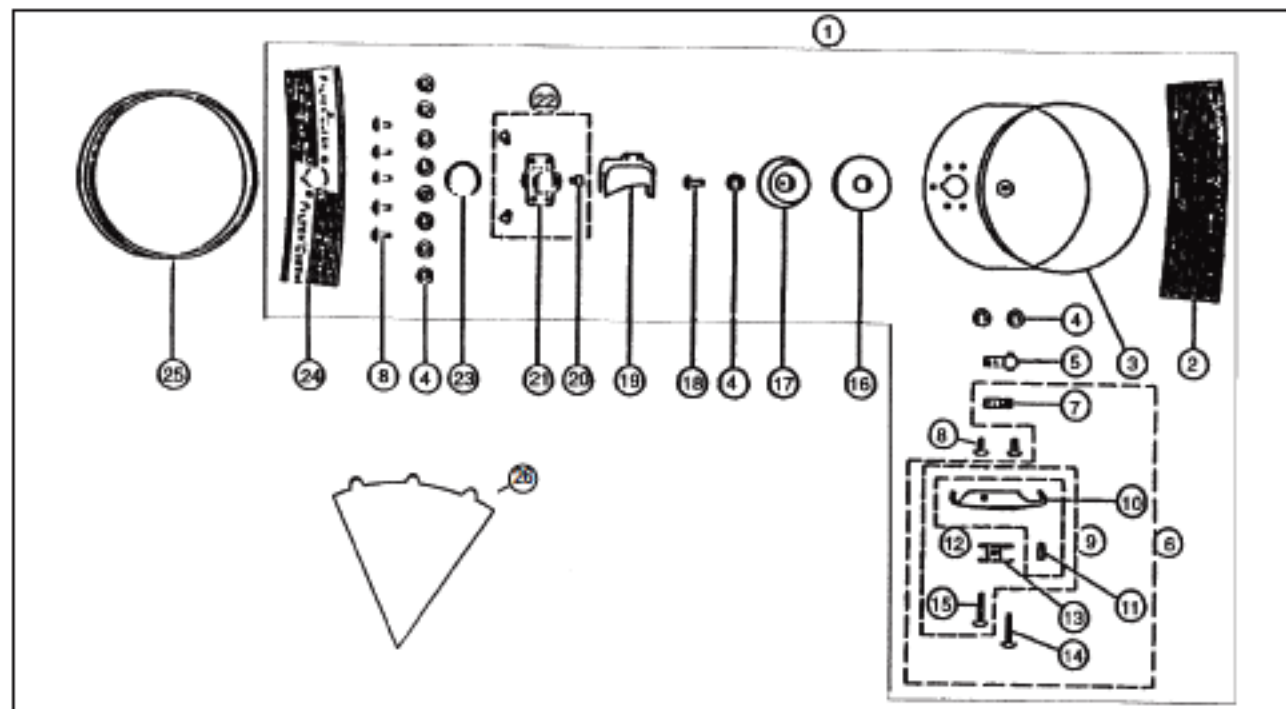
(II) = Princess II, (III) = Princess III. N/A = Not Applicable, NLA = No Longer Available

FILTER QUEEN Original & Replacement

Top Dome Assembly

KEY	BROWN MODELS 31X, D31X, D33	GRAY PRINCESS RN92, PNG92	DARK GRAY MAJESTIC AN95-X	DESCRIPTION
39	NLA	NLA	FQ-33514	Connector Pin
40	FQ-31775	FQ-31775	FQ-31775	Dome Gasket Ass'y
41	NLA	NLA	NLA	Lower Motor Support Clamp Screw
42	FQ-6201	FQ-6201	FQ-6201	Lower Motor Support
43	FQ-31146	FQ-31146	FQ-31146	Keps Nut
44	NLA	NLA	NLA	Secondary Support Ring
45	N/A	N/A	N/A	Secondary Filter Support Grommet Order FQ-3117
46	N/A	N/A	N/A	Secondary Filter Support Screen Order FQ-3117
47	FQ-350450	FQ-350450	FQ-95450	Secondary Filters (Princess May Use Either)
47	FQR-1800	FQR-1800	FQR-1800	Filter, Secondary Paper
48	FQ-31770	FQ-31770	FQ-31770	Perforated Cone (Plastic)
49	FQ-350712	FQ-350712	FQ-350712	Cone Retainer Screw
50	NLA	NLA	NLA	Switch Lever Pad
51	FQ-350751	FQ-350751	FQ-350751	Switch Lever Hinge Pin
52	FQ-500752	FQ-500752	FQ-500752	Switch Lever Spring
53	FQ-500750	FQ-500750	FQ-500750	Switch Lever
54	FQ-153318	FQ-153318	FQ-153318	Switch Lockwasher
55	FQ-31302	FQ-31302	FQ-31302	Switch
55	FA-3400	FA-3400	FA-3400	Switch, Step On W/15" Leads
56	NLA	NLA	NLA	Upper Motor Support & Pin Ass'y
57	FQ-31731	FQ-31731	FQ-31731	Upper Motor Support
58	FQ-33514	FQ-33514	FQ-33514	Connector Pin
59	FQ-500747	NLA	FQ-500747	Switch Bracket
60	NLA	NLA	NLA	Motor Protective Screen
61	FQ-7200	NLA	FQ-9561	Attachment Crown
61	FQR-7500	FQR-7500	FQR-7500	Tool Caddy, All Canister Models Brown
62	FQ-7201	FQ-7201	FQ-7201	Spring And Pin Ass'y
63	NLA	NLA	NLA	Retainer Pin (Order Key #62)
64	NLA	NLA	NLA	Retainer Spring (Order Key #62)
65	FQ-72008	FQ-72008	FQ-72008	Screw
66	FQ-350060	FQ-350060	FQ-350060	Motor, Support Gasket
67	NLA	N/A	N/A	Motor, 2 SP W/Torq Converter (K33)
67	FQ-3309C	N/A	FQ-3309C	Motor, 2 SP (D31, K31X & Majestic)
67	GS-456	N/A	N/A	Motor, 2 Stage, 2 Speed 5 Wire
67	L-116227-00	N/A	N/A	Motor, 2 Stage, 2 Speed 5 Wire
67	FQ-3109	FQ-3109	N/A	Motor, 2 Stage, 1 Speed 2 Wire
67	L-116311-01	L-116311-01	N/A	Motor, 2 Stage, 1 Speed 2 Wire
68	NLA	NLA	NLA	Rivet
69	N/A	N/A	FQ-95835	Indicator Light (95X Only)
70	N/A	N/A	FQ-95835A	Thermostat (95X Only)
71	FQ-95760	FQ-95760	FQ-95760	Lg. Solderless Connector
71	SS-3272	SS-3272	SS-3272	Wire Nut
72	NLA	NLA	NLA	Secondary Filter Support Ass'y
73	FQ-95798	FQ-95798	FQ-95798	Secondary Filter Support Ring
74	NLA	NLA	NLA	Secondary Filter Support Retainer (Order Key #72)

N/A = Not Applicable. NLA = No Longer Available



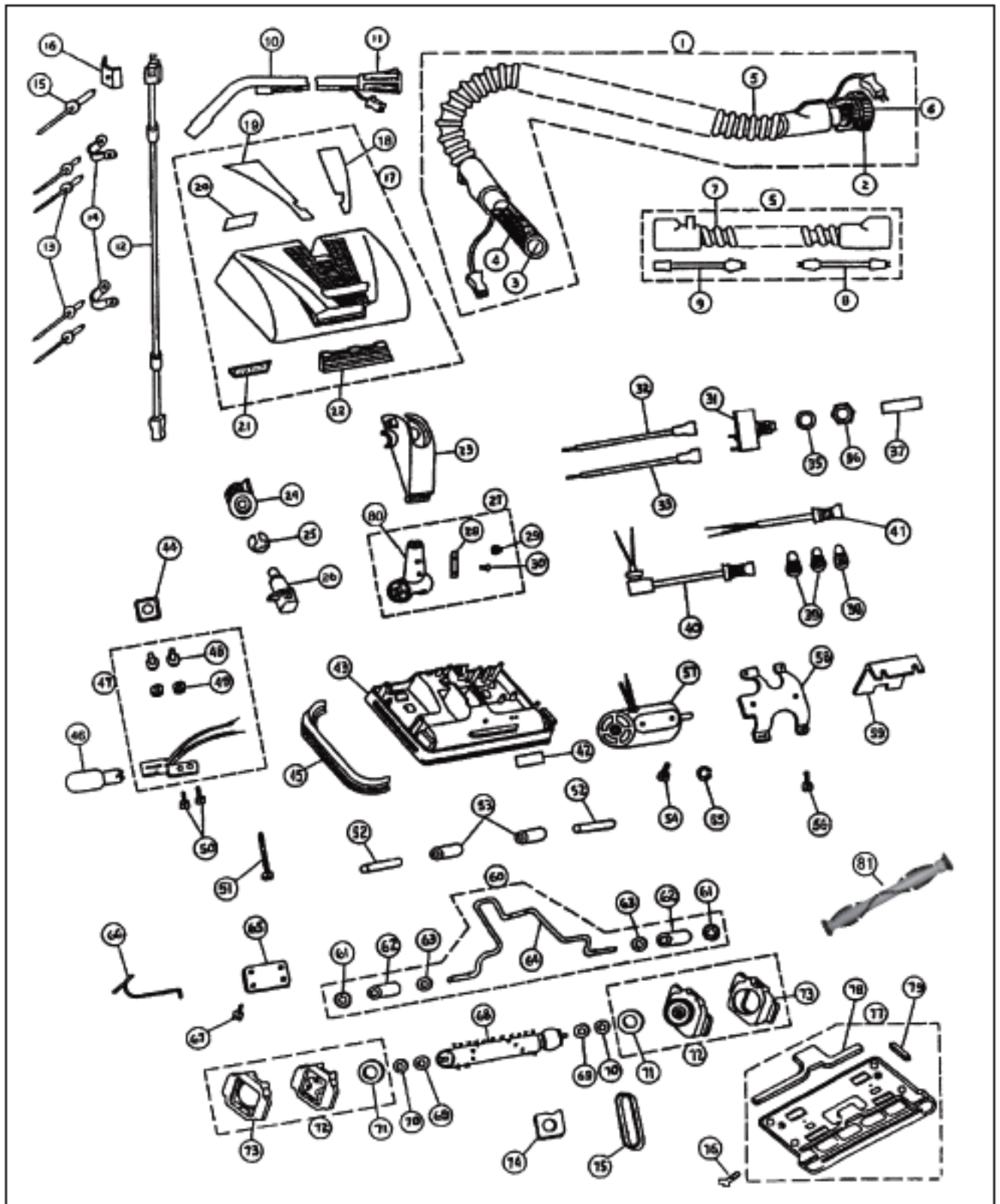
KEY	BROWN MODELS 31X, D31X, D33	GRAY PRINCESS RN92, PNG92	DARK GRAY MAJESTIC AN95-X	DESCRIPTION
1	NLA	NLA	NLA	Dirt Container Ass'y
1	N/A	NLA	N/A	Dirt Container Ass'y
2	NLA	N/A	N/A	Rear Panel (31, 33 Only)
3	NLA	NLA	NLA	Dirt Container
4	FQ-11246	FQ-11246	FQ-11246	Washer
5	FQ-500778	FQ-500778	FQ-500778	Clamp Spring Stamping
6	FQ-3174	FQ-3174	FQ-3174	Clamp Ass'y with Spring
7	FQ-500779	FQ-500779	FQ-500779	Clamp Spring
8	NLA	NLA	NLA	Rivet
9	NLA	NLA	NLA	Clamp Ass'y w/o Spring (Order FQ-3174)
10	NLA	NLA	NLA	Clamp (Order FQ-3174)
11	FQ-95786	FQ-95786	FQ-95786	Protective Pad
12	NLA	NLA	NLA	Clamp and Pad Ass'y (Order FQ-3174)
13	NLA	NLA	NLA	Clamp Link
14	NLA	NLA	NLA	Clamp Rivet
15	NLA	NLA	NLA	Clamp Link Rivet
16	FQ-500427	FQ-500427	FQ-500427	Cone Locator Gasket
17	NLA	NLA	NLA	Cone Locator
18	FQ-133054	NLA	FQ-133054	Rivet
19	FQ-200451	FQ-200451	FQ-200451	Dirt Deflector Stamping
20	NLA	NLA	NLA	Bag Inlet Pin
21	NLA	NLA	NLA	Inlet
22	FQ-35043	FQ-35043	FQ-35043	Inlet And Pin Ass'y
23	FQ-92407	FQ-92407	FQ-92407	Inlet Gasket
24	NLA	NLA (II)	NLA	Front Decorative Decal
24	N/A	NLA (III)	N/A	Front Decorative Decal
25	FQ-200430	FQ-200430	FQ-200430	Dirt Container Gasket
26	FQ-50047	FQ-50047	FQ-50047	Filter Cone, Paper 12 Pk
26	FQR-1400	FQR-1400	FQR-1400	Filter Cone, Paper 12 Pk

(II) = Princess II, (III) = Princess III, N/A = Not Applicable, NLA = No Longer Available

FILTER QUEEN

Original & Replacement

Models 88 & 96 POWER NOZZLE



Original & Replacement

FILTER QUEEN

Models 88 & 96 POWER NOZZLE

KEY	BROWN MODELS 31X, D31X, D33	DARK GRAY MAJESTIC AN95-X	DESCRIPTION
1	FQ-8884	FQ-9684	Complete Hose Ass'y
1	FQR-4000	NLA	Electric Hose, Complete With OEM Ends Wire Reinforced 6'
1	FQR-4001	N/A	Electric Hose, Complete Wire Reinforced 6' Brown
2	FQ-4880-4	FQ-9680	Connector Ass'y
2	FQR-4505	N/A	Hose Coupling Ass'y, Machine End Brown
3	FQ-4885-4	FQ-9685	Adaptor Tube Ass'y
3	FQR-4515	N/A	Hose Coupling Ass'y, Attachment End Brown
4	NLA	FQ-96842A	Tube Seal (Long)
4	NLA	N/A	Sleeve, Attachment Hose End Brown
5	NLA	NLA	Electric Hose, With Pigtailed
5	FA-4300-4	N/A	Electric Hose, With Pigtailed, Wire Reinforced 6' Brown
5	NLA	N/A	Electric Hose, With Pigtailed Crushproof 6' Brown
6	FQ-3407	FQ-3407	Inlet Gasket
7	NLA	NLA	Electric Hose Without Pigtailed
7	XFA-4300-4	N/A	Electric Hose, Wire Reinforced 6' Brown
7	NLA	N/A	Electric Hose, Crushproof 6' Brown
8	FQ-88821	FQ-96821	Male/Female Pigtail
8	NLA	N/A	Pigtail, 10.5" Male/Male Brown
9	NLA	FQ-96822	Male/Female Pigtail 18"
9	NLA	N/A	Pigtail, 18" Male/Female Brown
10	NLA	FQ-9630	Handle Tube Ass'y With Cord
10	NLA	N/A	Wand Ass'y, With Cord & Brown Cuff
11	NLA	FQ-96842	Tube Seal (Short)
11	NLA	N/A	Rubber Sleeve, Wand Brown
12	FQ-4836-4	FQ-9636	Handle Tube Cord
12	NLA	N/A	Cord, 28" Male/Female P.N. Wand Brown
13	FQ-48329	FQ-48329	Pop Rivet
14	FQ-48305	FQ-48305	Cord Clip
15	FQ-48317	FQ-48317	Pop Rivet
16	NLA	NLA	Cord Connecting Clip
17	FQ-8825-4	FQ-9625-0	Nozzle Cover Ass'y Complete
17	NLA	N/A	Nozzle Cover Ass'y Complete Chrome
18	N/A	FQ-96419R	Nozzle Cover Decal (Right)
19	N/A	FQ-96419L	Nozzle Cover Decal (Left)
20	NLA	NLA	Warning Label
21	NLA	NLA	Nameplate
22	FQ-88230	FQ-88230	Lens
23	FQ-88211	FQ-88211	Adaptor Retainer, Black
23	FQR-7200	FQR-7200	Adaptor Retainer, Black
24	FQ-48221-4	FQ-96221	Control Knob
25	FQ-52222	FQ-52222	Retainer Ring
26	FQ-52225	FQ-52225	Cam
27	NLA	FQ-9687-3	Swivel Adaptor Ass'y
28	FQ-350231	FQ-350231	Retainer Spring
29	FQ-156232	FQ-97232	Retainer Pin
30	NLA	NLA	Rivet
31	FQ-8831	FQ-8831	Circuit Breaker Without Leads
32	NLA	NLA	Lead Wire, Black
33	NLA	NLA	Lead Wire, Red
35	NLA	NLA	Circuit Breaker Washer

(II) = Princess II, (III) = Princess III. N/A = Not Applicable. NLA = No Longer Available

FILTER QUEEN

Original & Replacement

Models 88 & 96 POWER NOZZLE

KEY	BROWN MODELS 31X, D31X, D33	DARK GRAY MAJESTIC AN95-X	DESCRIPTION
36	NLA	NLA	Circuit Breaker Nut
37	NLA	NLA	Circuit Breaker Label
38	NLA	NLA	Solderless Connector (Large)
38	SS-3272	SS-3272	Wire Nut
39	NLA	NLA	Solderless Connector (Small)
39	SS-3270	SS-3270	Wire Nut
40	FQ-96323	FQ-96323	Power Nozzle Cord With Strain Relief 9" With Right Angle
41	FQ-48323-4	N/A	Power Nozzle Cord Without Strain Relief
42	FQ-88238	FQ-88238	Lamp Warning Label
43	FQ-88209	FQ-96209	Nozzle Base With Onserts
44	FQ-48244	FQ-96244	High-Low Indicating Switch
45	FQ-88201-4	NLA	Bumper
46	FQ-88235	FQ-88235	Lamp, 15 Watt
46	FA-3515	FA-3515	Bulb, 15 Watt
47	FQ-8835	FQ-8835	Lamp Socket
48	FQ-88345	FQ-88345	Eyelet
49	FQ-88324	FQ-88324	Grommet
50	FQ-31215	FQ-31215	Lamp Socket Screw
51	FQ-88208	FQ-88208	Nozzle Base and Cover Screw
52	FQ-88249	FQ-88249	Roller Shaft
53	FQ-88248	FQ-88248	Roller
54	FQ-48218	FQ-48218	Motor Mounting Screw
55	FQ-10117	FQ-10117	Lockwasher
56	NLA	NLA	Motor Bracket Screw
57	FQ-8808	FQ-8808	Motor
57	FQR-6050	FQR-6050	Motor, Power Nozzle
58	FQ-48217A	FQ-48217A	Motor Bracket
59	FQ-88308	FQ-88308	Insulator
60	FQ-8822	FQ-8822	Roller Arm Ass'y
61	FQ-48276	FQ-48276	Retainer Ring
62	FQ-52283L	FQ-52283L	Front Roller
63	FQ-48243	FQ-48243	Washer
64	FQ-88281	FQ-88281	Roller Arm
65	FQ-48282	FQ-48282	Roller Arm Retainer Plate
66	FQ-88284	FQ-88284	Roller Arm Tension Spring
67	FQ-56237	FQ-56237	Retainer Plate Screw
68	NLA	NLA	Revolving Brush (Order FQ-2000)
81	FQR-2040	FQR-2040	Brushroll Complete With Ball Bearing Ends
69	FQ-48246	FQ-48246	Steel Washer
70	FQ-48216	FQ-48216	Fiber Washer
71	FQ-48267	FQ-48267	Dirt Seal Washer (Felt)
72	FQ-5223*	FQ-5223	Brush Bearing Ass'y
73	NLA	NLA	Brush Mount
74	FQ-88228	FQ-88228	Belt Dirt Seal
75	FQ-48260	FQ-48260	Belt
75	FQR-1050	FQR-1050	Belt
76	FQ-88215	FQ-88215	Bottom Plate Retainer Screw
77	FQ-8824	FQ-9624	Bottom Plate Ass'y
78	FQ-88280	FQ-88280	Bottom Plate Sealing Gasket
79	FQ-88279	FQ-88279	Strip Gasket
80	NLA	NLA	Swivel Adaptor (Order Key #27)
81	FQ-2000	FQ-2000	Brushroll Complete With Ball Bearing Ends

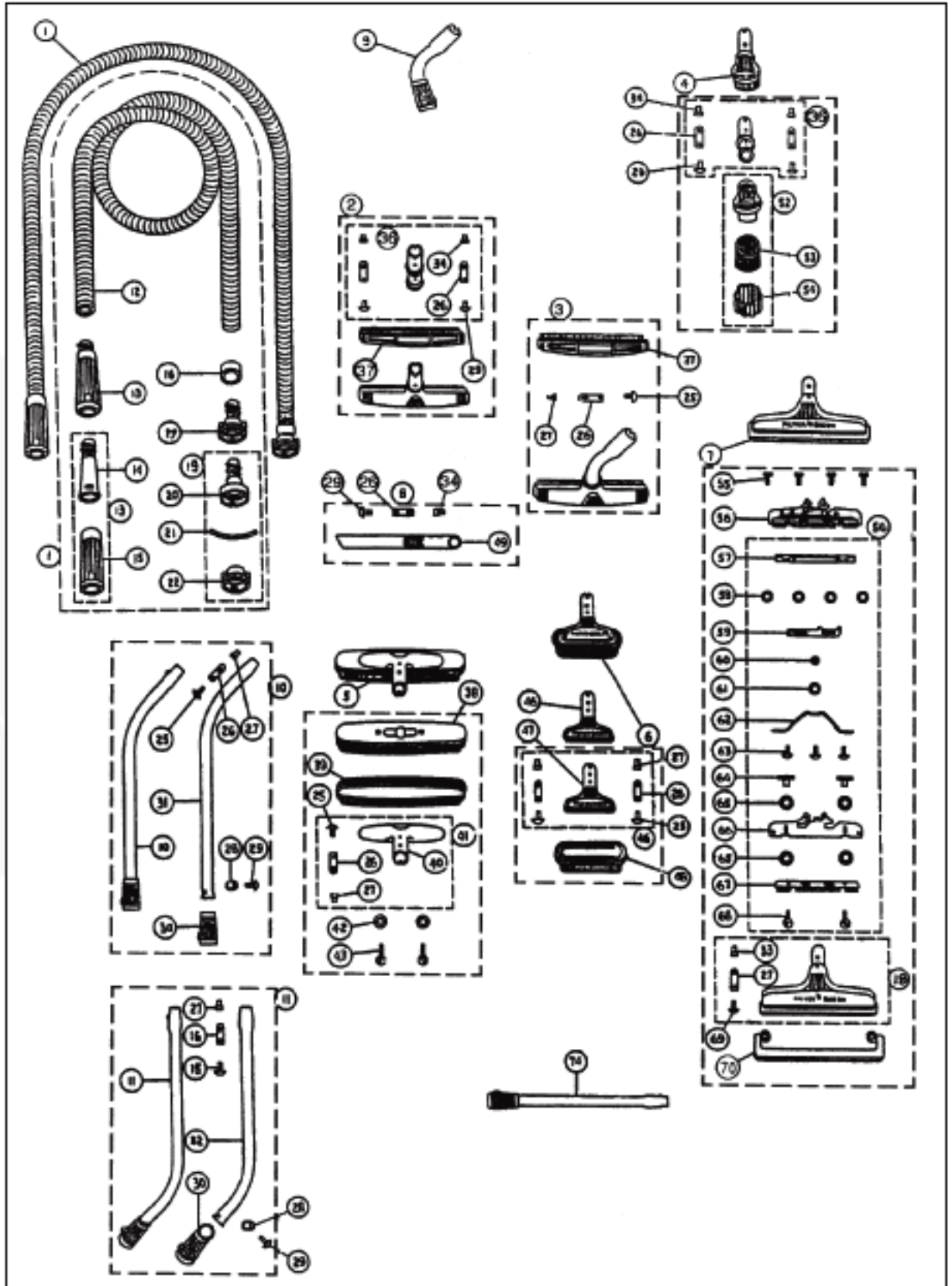
* THESE BRUSHROLL BEARINGS ONLY FIT
SLEEVE BEARING BRUSHROLLS

N/A = Not Applicable. NLA = No Longer Available

Original & Replacement

FILTER QUEEN

Straight Suction Attachments



FILTER QUEEN Original & Replacement

Straight Suction Attachments

KEY	BROWN MODELS	GRAY PRINCESS	DARK GRAY MAJESTIC	DESCRIPTION
	31X, D31X, D33	RN92, PNG92	AN95-X	
1	NLA	FQ-9584 (II)	FQ-9584	Straight Suction Hose Ass'y 6'
1	FQR-4010	N/A	N/A	Hose, Non-Electric Wire Reinforced Complete 6' Brown
1	NLA	NLA	N/A	Straight Suction Hose Ass'y 10'
2	NLA	NLA	NLA	10" Bare Floor Brush W/Out Adapter
3	NLA	NLA	FQ-9681-3	10" Bare Floor Brush Metal Neck Curved
4	NLA	NLA	NLA	Complete Round Brush Ass'y (Order FQ-9682-3)
4	FQR-5350	N/A	N/A	Dust Brush, W/Lock Pin Brown
5	FQ-5500	FQ-5500	FQ-5500	Complete 14" Floor Brush Ass'y
6	NLA	NLA	FQ-9627	Complete 6" Nozzle & Brush Ass'y
7	FQ-50020	NLA	NLA	Complete Rug Nozzle Ass'y
	NLA	N/A	N/A	Rug Tool, 11" W/Lock Pin Brown
8	FQ-50079	FQ-9279	FQ-9679	Complete Crevice Tool
8	FQR-5400	N/A	N/A	Crevice Tool, W/Lock Pin Brown
8	NLA	FQ-9279-28	FQ-9279-28	Crevice Tool, 28"
9	FQ-4855-2	FQ-4855-2	NLA	Metal Curved Adaptor Tube Ass'y
10	NLA	FQ-9278	FQ-9278	Complete Upper Wand Ass'y
11	NLA	FQ-9277	FQ-9277	Complete Lower Wand Ass'y
12	FQ-33802	FQ-92802 (III)	NLA	Straight Suction Hose 6 1/2'
12	FA-4210-4	FA-4210-2	FA-4210-3	Hose, Wire Reinforced 6'
12	FQ-33802-10	NLA	N/A	10 Ft. Hose
13	NLA	NLA	FQ-9585	Adaptor Tube Ass'y
13	FQR-4510	N/A	N/A	Hose Coupling, Attachment End W/Threads Brown
14	NLA	NLA	NLA	Adaptor Tube (Order Key #13)
15	NLA	FQ-96842A	FQ-96842A	Tube Seal Long
15	NLA	N/A	N/A	Sleeve, Attachment Hose End Brown
16	FQ-500814	FQ-92814	FQ-96814	Ferrule
16	FA-4575-4	FA-4575-2	N/A	Ferrule
17	FQ-3380	NLA	FQ-9580	Connector Tube And Base Ass'y
17	FQR-4500	N/A	N/A	Hose Coupling, Mach. End Brown Cover
18	NLA	NLA	NLA	11" Nozzle (Order Key #7)
19	FQ-3380	NLA	FQ-9580	Connector Ass'y
20	NLA	NLA	NLA	Connector Tube And Base Ass'y (Order Key #19)
21	FQ-3407	FQ-3407	FQ-3407	Hose Gasket
22	NLA	NLA	NLA	Connector Cover (Order Key #19)
25	NLA	NLA	NLA	Rivet
26	FQ-350231	FQ-350231	FQ-350231	Retainer Spring
27	FQ-97232	FQ-97232	FQ-97232	Retainer Pin
28	FQ-156278	FQ-156278	FQ-156278	Stop Sleeve
29	NLA	NLA	NLA	Rivet
30	NLA	FQ-92842	FQ-96842	Tube Seal Short
31	FQ-9278	FQ-9278	FQ-9278	Upper Wand, W/Cuff Black
31	NLA	N/A	N/A	Upper Wand, W/Cuff Brown
32	FQ-9277	FQ-9277	FQ-9277	Lower Wand, With Cuff Black
32	NLA	N/A	N/A	Lower Wand, W/Cuff Brown
34	FQ-156232	FQ-156232	FQ-156232	Retainer Pin
35	NLA	NLA	NLA	Rivet
36	NLA	NLA	NLA	Adaptor Ass'y

(II) = Princess II, (III) = Princess III, N/A = Not Applicable, NLA = No Longer Available

Original & Replacement **FILTER QUEEN**

Straight Suction Attachments

KEY	BROWN MODELS 31X, D31X, D33	GRAY PRINCESS RN92, PNG92	DARK GRAY MAJESTIC AN95-X	DESCRIPTION
37	NLA	NLA	NLA	Bristled Insert
38	N/A	NLA	NLA	14" Brush
39	N/A	FQ-92201	FQ-92201	Bumper
40	N/A	FQ-39807-2	FQ-39807-2	Adaptor Nozzle
41	N/A	FQ-3985-2	FQ-3985-2	Nozzle W/Pin & Spring
42	N/A	FQ-530025	FQ-530025	Washer
43	N/A	NLA	NLA	Screw
46	NLA	NLA	NLA	6" Nozzle And Pin Ass'y Black (Order FQ-9627-3)
46	FQR-5200	N/A	N/A	Upholstery Brush Ass'y W/Lock Pin Brown
47	NLA	NLA	NLA	6" Nozzle, Black (Order FQ-9627-3)
48	NLA	FQ-92291	FQ-9629	6" Brush Ass'y
49	FQ-50079	NLA	FQ-9679-3	Crevice Tool With Lock Pin
52	NLA	NLA	NLA	Round Brush Ass'y (Order FQ-9682-3)
53	FQ-33806	FQ-33806	FQ-33806	Bristled Insert
54	EXR-5350	EXR-5350	EXR-5350	Dust Brush Insert, Horse Hair
55	FQ-31215	FQ-31215	FQ-31215	Brush Guide Screw
56	FQ-3122	FQ-3122	FQ-3122	Brush & Guide Ass'y
57	FQ-31223	FQ-31223	FQ-31223	Brush Holder
58	FQ-11246	FQ-11246	FQ-11246	Washer
59	FQ-200255	FQ-200255	FQ-200255	Brush Slide
60	FQ-94276	FQ-94276	FQ-94276	Slide Tension Washer
61	FQ-31246	FQ-31246	FQ-31246	Washer
62	NLA	NLA	NLA	Brush Tension Spring
63	FQ-500226	FQ-500226	FQ-500226	Shouldered Rivet
64	NLA	NLA	NLA	Brush Guide Stud
65	FQ-500243	FQ-500243	FQ-500243	Fiber Washer
66	FQ-31214	FQ-31214	FQ-31214	Brush Guide
67	FQ-95224	FQ-95224	FQ-95224	Brush Strip
67	NLA	NLA	NLA	Brush Insert, Rug Tool 9 1/4" Long
68	NLA	NLA	NLA	Brush Screw
69	FQ-500212	FQ-500212	FQ-500212	Rivet
70	FQ-500201	FQ-92201	FQ-95201	Bumper
74	N/A	NLA	NLA	Straight Extension Wand Ass'y
	N/A	FQ-9277 (III)	N/A	Curved Extension Wand Ass'y
	FQR-5555	FQR-5555	FQR-5555	Felt Polishing Pad Ass'y (Not Shown)

(II) = Princess II, (III) = Princess III. N/A = Not Applicable. NLA = No Longer Available