

Lightweight Commercial

Model C1412-900

| Ref. No. | Part No. | Description |
|----------|---------------|--|
| 1 | 37911079 | Handle Cap - ABE |
| 2 | 46368005 | Attach. Cord - AAW |
| 3 | 38335020 | Bag Strap Spring - AY |
| 4 | 36425072 | Bag Strap - ABE |
| 5 | 48663149 | Upper Handle Assm. - ABE |
| 6 | 43434237 | Hose Assm. - ABX/AG |
| 7 | 36433098 | Tool Rack - ABE |
| 8 | 43414145 | Dusting Brush - AG |
| 9 | 38634078 | Extension Tube |
| 10 | 39464005 | Lower Handle - ABE |
| 11 | 36425067 | Jacket Support - Upper - ABE |
| 12 | 43686237 | Outer Jacket Assem. - Deluxe (Inc. items 11, 17) |
| 13 | 38456036 | Switch Control Rod - ABB |
| 14 | 40201085 | Nut & Bolt |
| 15 | 38614029 | Furniture Nozzle - AG |
| 16 | 38617024 | Crevice Tool - AG |
| 17 | 36425068 | Jacket Support - Lower - ABE |
| 18 | 38522011 | Rear Wheel - AG |
| 19 | 31531008 | Rear Wheel Shaft - AY |
| 20 | 36131056 * | Wheel Retainer |
| 21 | not available | Wheel - AG - (Use 43248054 wheel assembly) |
| 22 | 43248059 | Front Wheel Assem. (Incl. It. 21,43,44) |
| 23 | 34572002 | Cam Actuator Spring |
| 24 | 42243002 | Main Body Assm. (Incl. Items 18,19,27,41) |
| 25 | 38567008 | Cam Actuator - MW |
| 26 | 38421070 | Indicator Knob - ABE |
| 27 | 38458022 | Handle Release Lever |
| 28 | 38784016 | Seal |

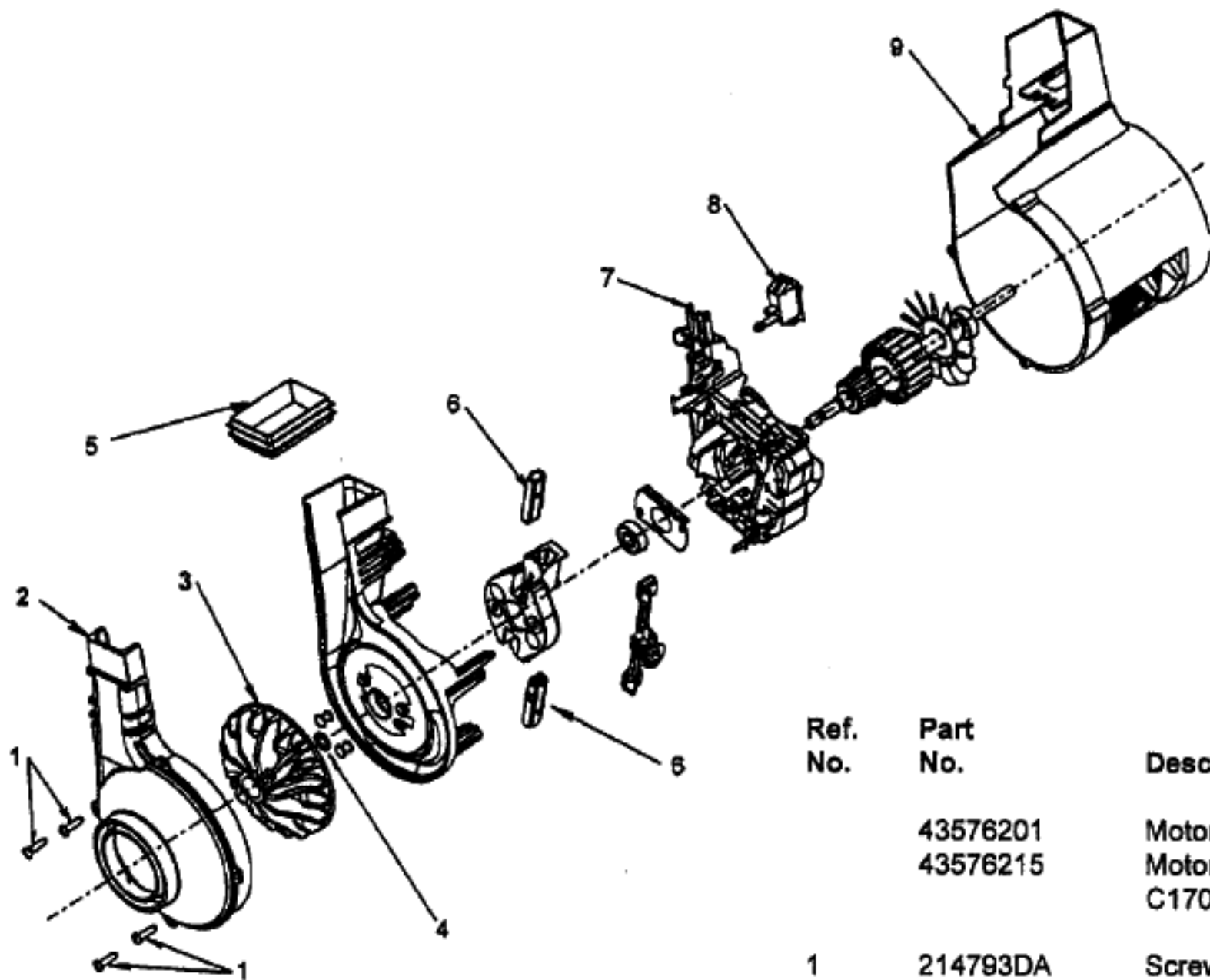
| Ref. No. | Part No. | Description |
|----------|------------------|--|
| 29 | 36131057 | Motor Retainer Cap - R.H. |
| 30 | 21447217 * | Screw - Self Tapping |
| 31 | 4010001A | Throw Away Bag (3 Pk.) |
| | 43667034 | Cloth Reusable A Bag |
| 32 | 38351013 | Spring |
| 33 | 37257257 | Door - AG |
| 34 | not applicable | Seal |
| 35 | not applicable * | Speed Nut |
| 36 | 42252B42 | Hood Assembly - AG |
| 37 | 37246130 | Panel - AG |
| 38 | 36131090 | Motor Retainer Cap - L.H. |
| 39 | 43576201 | Motor (P. 277) |
| 40 | 38528040 | Belt |
| 41 | 13261AY * | Rug Nozzle Rib Shoe |
| 42 | 38563011 | Nozzle Height Adj. Cam |
| 43 | not available | Lever- (Use 43248054 wheel assem) |
| 44 | not available | Wheel Shaft - AY (Use 43248054 wheel assembly) |
| 45 | 48414081 | Agitator Complete (P.277) |
| 46 | 37245017 | Bottom Plate |
| 47 | 21447121 * | Screw - Self Tapping |
| 48 | 21312787 * | Washer |

ITEMS NOT ILLUSTRATED

40201151 Hardware Kit - (inc. items 18,19,27, 41,48)

PACKAGING MATERIAL

56511B38 Owner Manual
59814113 Carton



| Ref. No. | Part No. | Description |
|----------|----------|-----------------------------------|
| | 43576201 | Motor Assembly Complete |
| | 43576215 | Motor Assembly Complete C1700-900 |
| 1 | 214793DA | Screw-Self Tapping (4) |
| 2 | 38736033 | Fan Chamber |
| 3 | 43565006 | Fan / Nut Assembly |
| 4 | 21312793 | * Washer |
| 5 | 38783020 | Duct Seal |
| 6 | 41311022 | Motor Brush Assembly (2) |
| 7 | 36914006 | Switch Bus Bar |
| 8 | 28161068 | Switch Assembly |
| 9 | 37194046 | Motor End Cap Assembly |

Agitator - #48414081 - C1404, C1412-900
#48414075 - C1414-900

| Ref. No. | Part No. | Description |
|----------|----------|----------------------------|
| 1 | 36423016 | Thread Guard - RH |
| 2 | 43267002 | Agitator Bearing Assm. (2) |
| 3 | 21347003 | * Conical Washer (2) |
| 4 | 36422022 | Agitator End (2) |
| 5 | N/A | Agitator Body |
| 6 | N/A | Agitator Shaft |
| 7 | 36423017 | Thread Guard - LH - AG |

