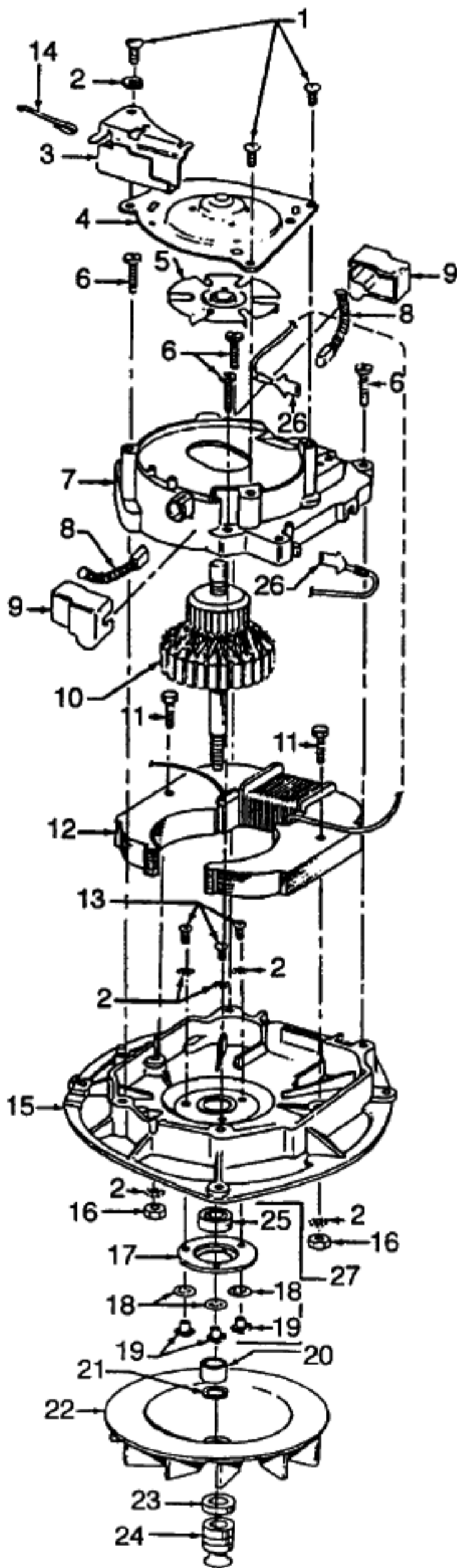


Available Replacement Parts for HOOVER C1433

[H-43267002](#)

AGITATOR BEARING ASM



Motor 40309020
1 - Speed w/ Guide

Ref. No.	Part No.	Description
1	45533AY	+* Screw
2	14062	* Washer
3	41961009	Indicator Guide
4	42934002	Motor Casing Cap Assm.
5	38755005	Vent Fan
6	161535	* Screw
7	42195003	Upper Motor Casing
8	47318012	Carbon Brush
9	36315003	Brush Insulator
10	44768049	Armature
11	45118	* Bolt
12	45412035	Field Coil
13	21772501	* Screw
14	35276006	Indicator Guide Spring
15	42193006	Lower Motor Case
16	15673	* Nut
17	32184003	Retainer
18	19772	Washer
19	45251	Nut
20	31731002	Spacer
21	166563	* Washer
22	38755011	Fan
23	31162004	* Washer - Heat Insulating
24	38532009	Motor Pulley
25	24152807	Bearing
26	14320	* Terminal
27	43267006	Bearing Kit

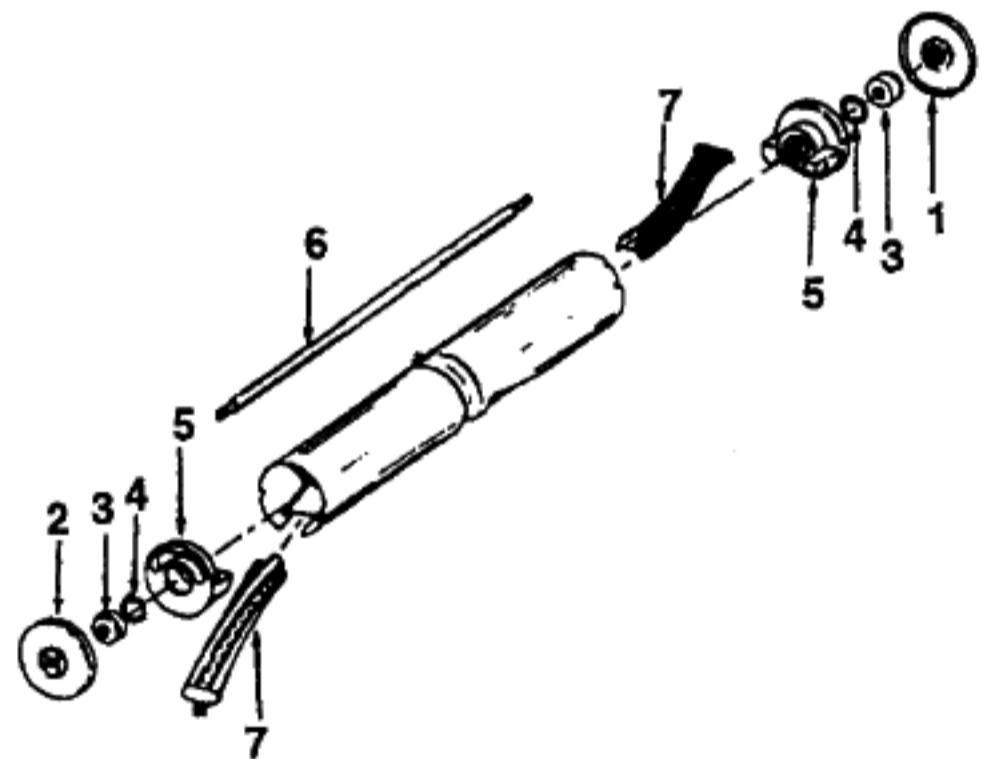
Ref. No.	Part No.	Description
1	46383137	Cord - AAW - 35'
2	36216002	Cord Protector
3	21465314	* Screw
4	38421012	Switch Button - AG
5	37258110	Switch Cover - AG
6	281770KD	Switch
7	27666702	* Terminal
8	37214070	Switch Case
9	12227	* Wire Nut
10	27479307	* Cable Tie
11	48644108	Handle Comp. - AX
12	39454070	Handle Grip - BU
13	21256094	* Rivet
14	39441016	Cord Clip - AG
15	48644114	Upper Handle - AX
16	36913007	Insulator
17	47155005	Connector Cord
18	46321033	Cord Assem.
19	32284023	Lower Handle - AX
20	21631301	Handle Bolt
21	32277021	Nut
22	13704	* Washer
23	38313023	Motor Lead Spring
24	43675188	Dust Cup Assem. - AG
25	38335009	Spring
26	41128021	Bag Clip & Spring
27	43667056	Cloth Bag - AG
28	35173001	Bag Expander
29	34112015	Seal
30	41427006	Support & Bellows
31	34123020	Gasket
32	36155011	Latch - AG
33	38775001	Dust Cup
34	38673001	Bellows - AG
35	49044	Clamp
36	17206	* Screw
37	15854EF	* Nut
38	41424011	Bag Flange
39	13730	* Lock Ring
40	161509AY	Bail Shaft
41	38452051	Nozzle Adjustment Lever - AG
42	41416077	Bail - AG
43	38426080	Foot Pad - AG
44	43137047	Handle Control Lever - AG
45	35463011	Handle Plate
46	37954004	Bail Cover Plate - AG
47	12954	* Screw
48	47450AY	Pivot Pin
49	11735	Roller Kit
50	48409FW	Spring
51	19907	Bag Flange Clamp Lever
52	161513	Spring
53	34252005	* Yoke
54	32182001	* Wheel Retainer
55	38521019	Rear Wheel - AG
56	43263003	Cam Follower
57	41431013	Wheel Shaft & Support Assem.
58	21312806	* Washer
59	35434040	Axle Retainer
60	21447229	Screw
61	47457AY	Wheel Shaft
62	37245081	Bottom Plate - AG
63	21312724	* Washer
64	34791AG	Carrier Wheel
65	21447020	* Screw
66	48422	* Rivet
67	21312781	* Washer
68	36153006	Latch

Ref. No.	Part No.	Description
69	21447229	* Screw
70	32277008	Handle Clamp Bolt Nut
71	48414021	Agitator - 2B
72	44783AG	Belt
73	34784021	Agitator Retainer Spring
74	21631302	Handle Bolt
75	N/A	
76	42242269	Main Body - AG
77	12559FW	Spring
78	34665007	Pin Retainer
79	21447229	* Screw
80	12997AW	* Rivet
81	36231042	Furniture Guard - BU
82	41119009	Retainer & Sleeve
83	34287012	Baffle
84	21447211	* Screw
85	42251015	Hood - AG
86	43574193	Motor- 1 Speed - (P - 22)

PACKAGING MATERIAL

56711144	+ Assembly Inst. Sheet
56711140	Instruction Book
58174086	Carton
58343025	Front Support
58366012	Rear Support
58216006	Dirt Cup Middle Pad

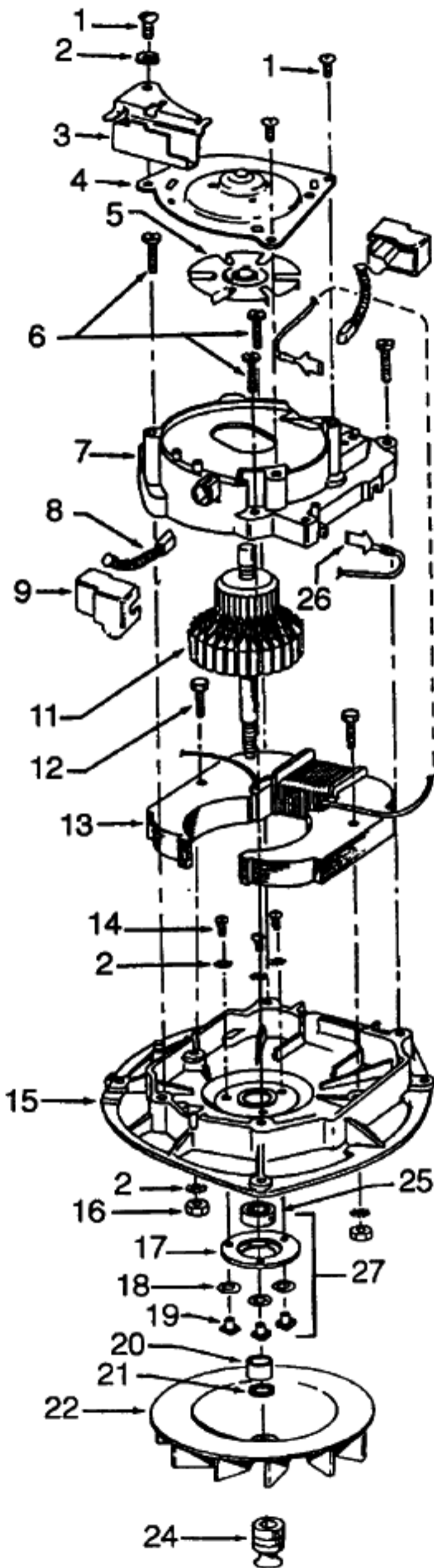
Agitator 48414021



Ref. No.	Part No.	Description
1	12985AY	Thread Guard - RH
2	48495AY	Thread Guard - LH
3	43267002	Bearing
4	21347003	* Conical Washer
5	41435070	End
6	32724008	Shaft
7	48445001	Agitator Brush

Motor

**Models C1065, C1067, C1069, C1085, C1401
C1405, C1425, C1429, U7021, U7063, U7077, U7079**



**Motor #43574192
1-Speed w/Guide**

**Motor #43574193
1-Speed w/o Guide**

Ref. No.	Part No.	Description
1	45533AY	* Screw
2	14062	* Washer
3	41961009	Indicator Guide
4	42934002	Upper Bearing
5	38755004	Vent Fan
6	161535	* Screw
7	19857	+ Upper Motor Casing
8	47318012	Carbon Brush
9	36315003	Brush Insulator
11	44768051	Armature
12	45118	* Bolt
13	45412015	Field Coil
14	21772501	* Screw
15	42193006	Lower Motor Case
16	15673	* Nut
17	32184003	Retainer
18	19772	* Washer
19	45251	Nut
20	31731002	Spacer
21	166563	* Washer
22	38755011	Fan - Poly
24	43251003	Motor Pulley
25	24152807	Bearing
26	14320	* Terminal
27	43267006	Bearing Kit

ITEMS NOT ILLUSTRATED

35276006 Indicator Guide Spring