

This Owner's Manual is provided and hosted by [Appliance Factory Parts](#).



GE CSHS5UGXCSS Owner's Manual

[Shop genuine replacement parts for GE
CSHS5UGXCSS](#)



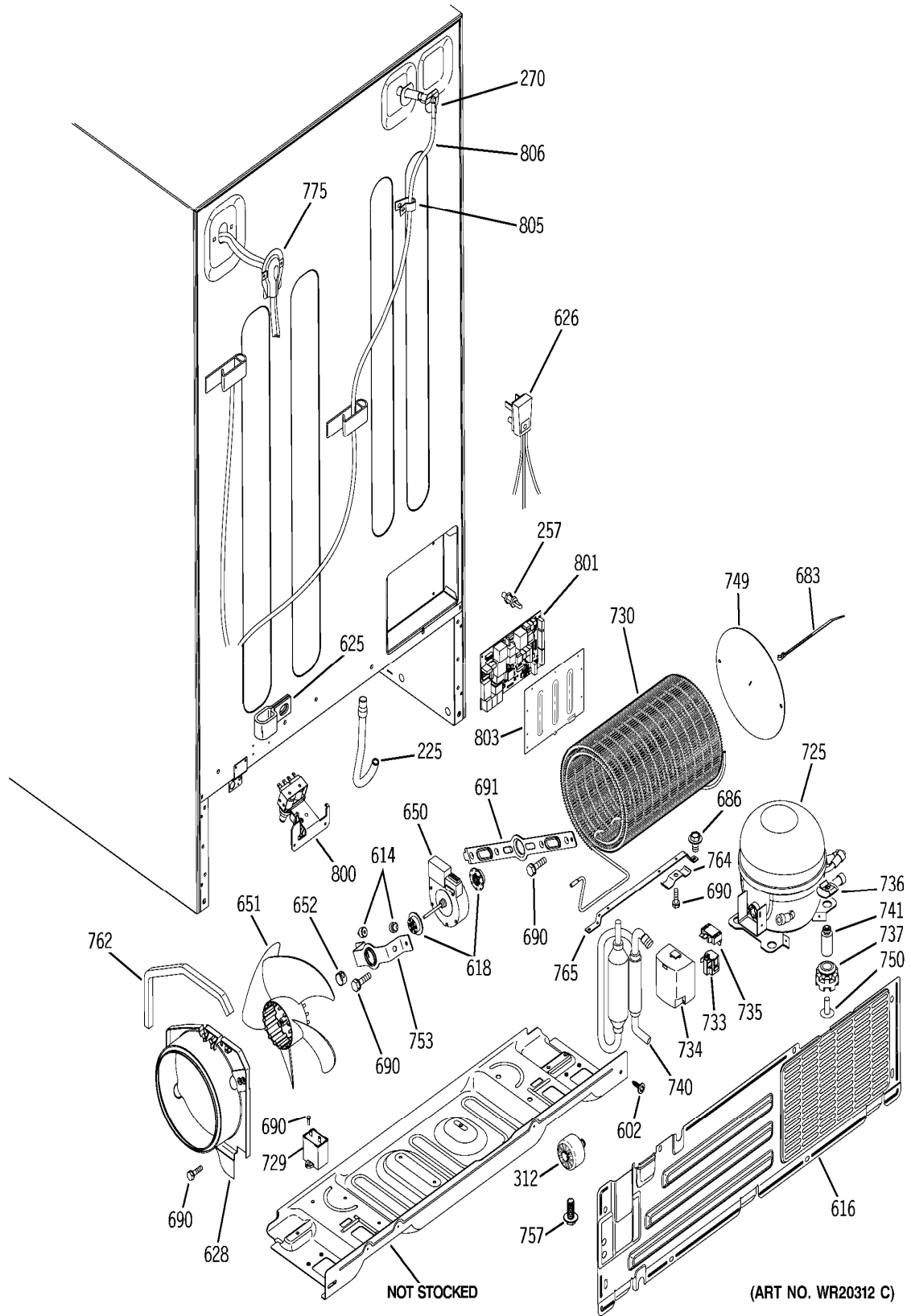
[Find Your GE Refrigerator Parts - Select From 27444 Models](#)

----- Manual continues below part list -----

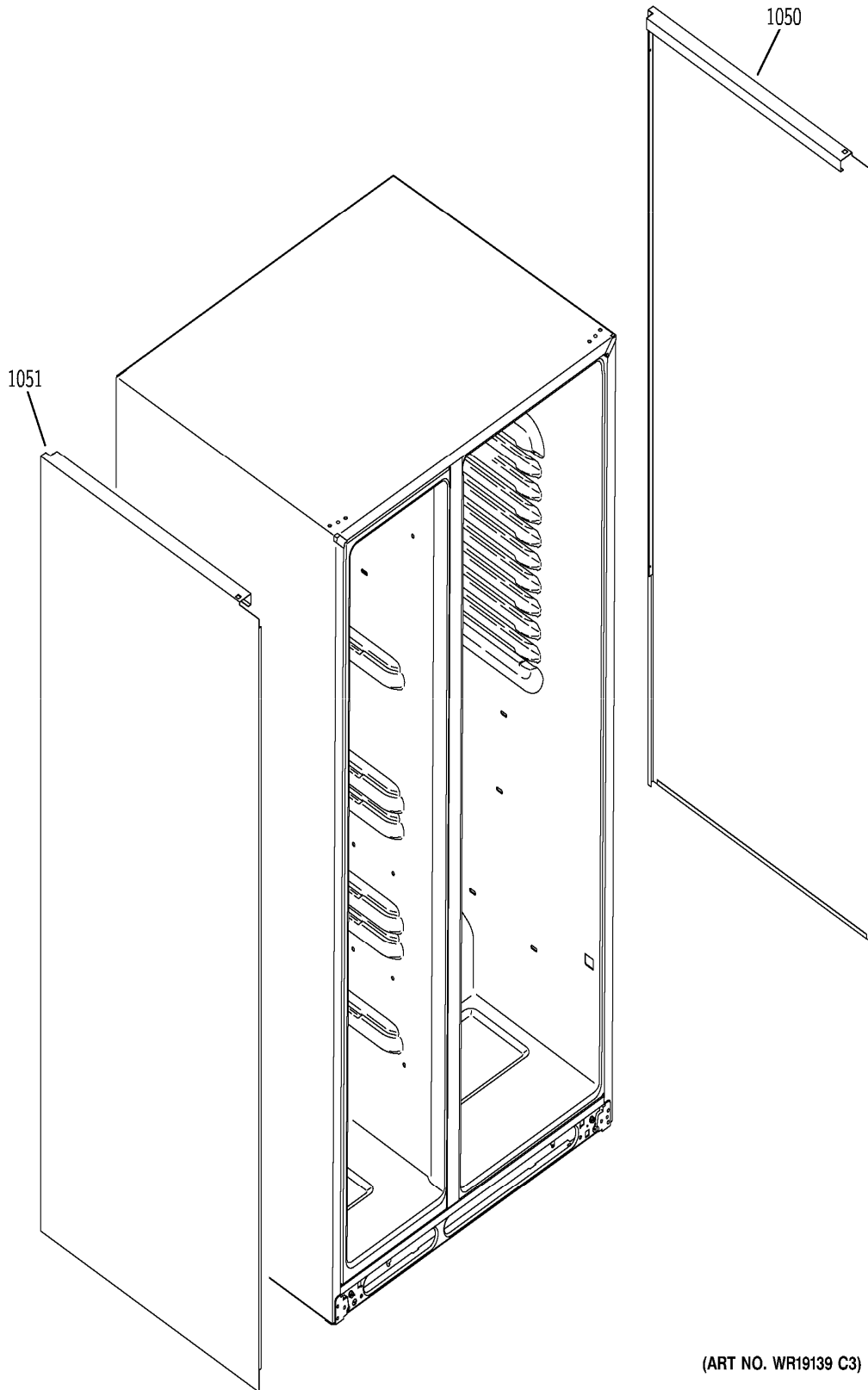
Available Replacement Parts for GE CSHS5UGXCSS

WR71X10761	REFRIGERATOR DOOR SHELF TRIM
WR51X10055	HEATER & BRACKET ASSY AFTERMARKET
WR62X10055	SOLENOID ASM AFTERMARKET
WR02X12008	GROMMET EVAP FAN
WR60X10209	REFRIGERATOR CONDENSER FAN MOTOR
WR55X10025	SENSOR TEMP FF AFTERMARKET
WR30X10093	ELECTRONIC icemaker DOMESTIC
WR2X9391	SOCKET&TERM
WR17X11653	DOOR RECESS ASM AFTERMARKET
WR17X11459	CUP DRIVE
WR17X11440	REFRIGERATOR WATER TANK ASSEMBLY
WR17X11168	GROMMET AND TUBE ASM
WR02X12208	LIGHT DISPENSER AFTERMARKET
WR02X10585	SPRING RECESS DOOR
MSWF	FAST FILL WATER FILTER OEM GE
WR57X10070	WATER VALVE
WR60X10259R	MOTOR CRUSHER DISP RECONDITIONED
WR02X11330	UNION CONNECTOR

[CSHS5UGXCSS] SEALED SYSTEM & MOTHER BOARD

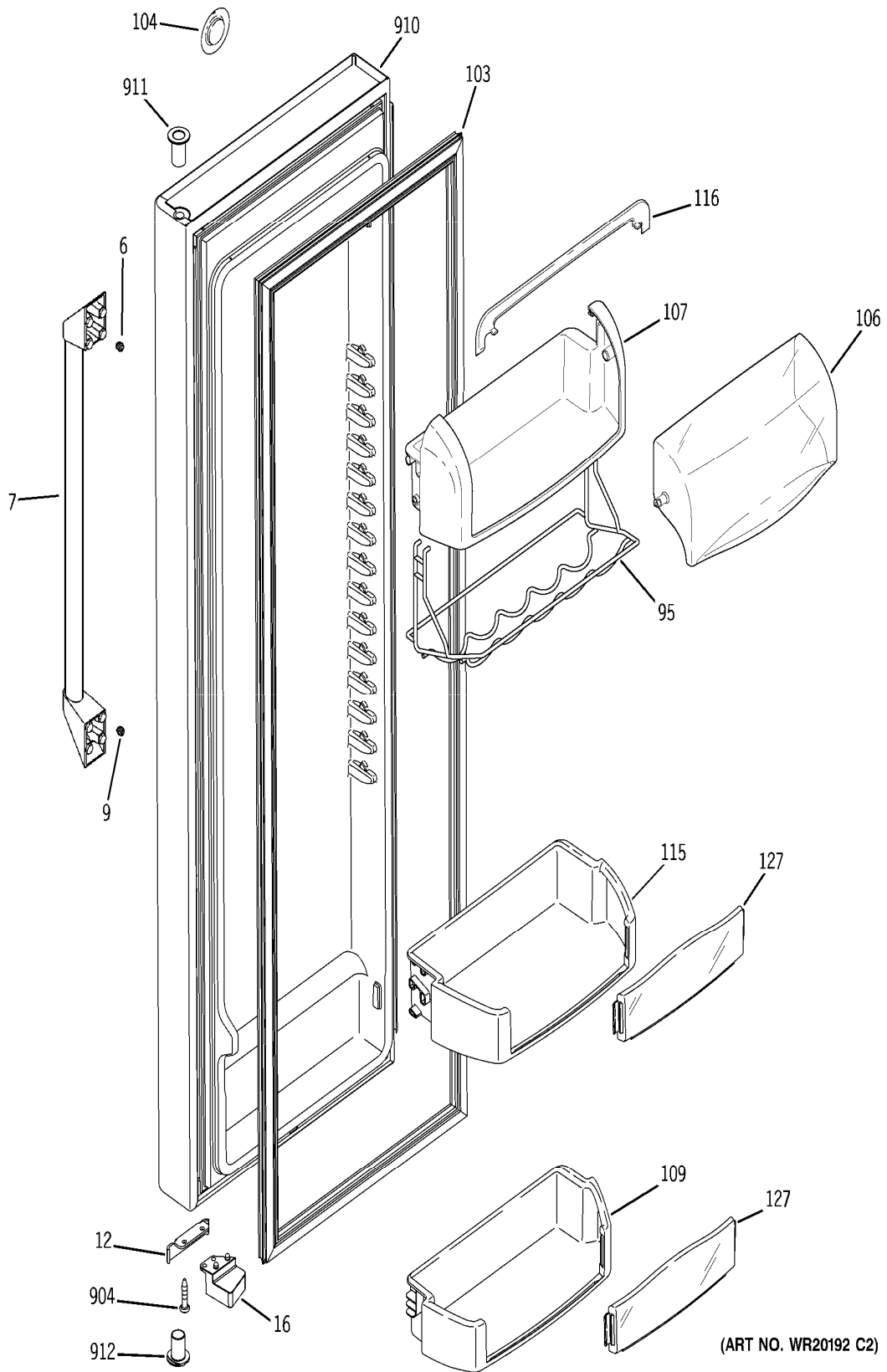


[CSHS5UGXCSS] CLAD COMPONENTS



(ART NO. WR19139 C3)

[CSHS5UGXCSS] FRESH FOOD DOOR

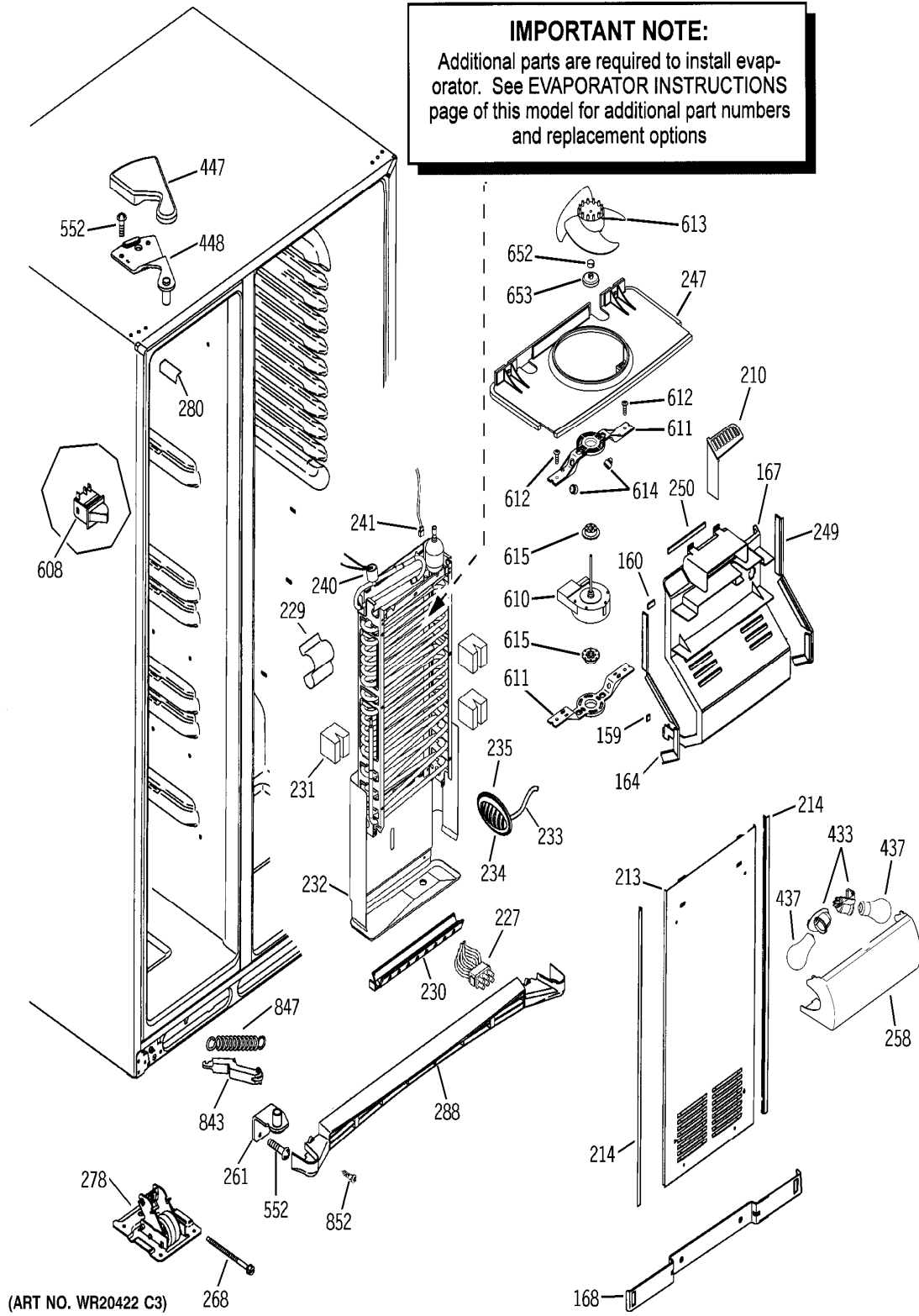


(ART NO. WR20192 C2)

[CSHS5UGXCSS] FREEZER SECTION

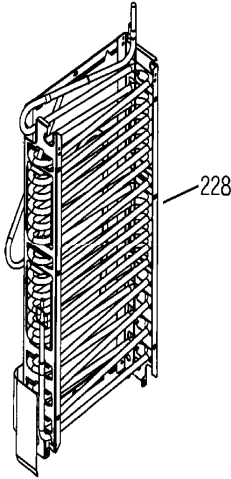
IMPORTANT NOTE:

Additional parts are required to install evaporator. See EVAPORATOR INSTRUCTIONS page of this model for additional part numbers and replacement options



(ART NO. WR20422 C3)

[CSHS5UGXCSS] EVAPORATOR INSTRUCTIONS



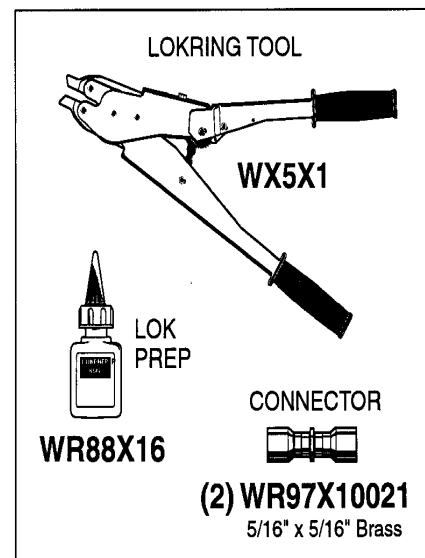
There are two approved evaporator replacement methods. The Lokring® method requires no brazing, by utilizing tight mechanical connections. The heat shield uses the traditional brazing method, but provides protection to the upper liner while brazing the evaporator connections in the freezer compartment.

Always add a new filter drier when servicing the sealed system. Follow each step of the instructions included with the replacement evaporator.

LOKRING® METHOD

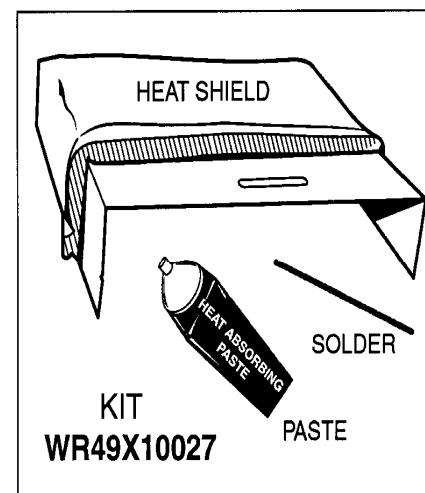
LokRing® is a method of installing the evaporator in the freezer without the use of a torch. It utilizes a mechanical connection rather than a brazed connection. Apply a few drops of LokPrep (a special cleaning and sealing solution), to the ends of the tubing that you wish to join together. The LokRing® tool compresses the connector to ensure a tight mechanical connection. The parts shown to the right are required for the LokRing® replacement method.

For additional information on how to use LokRing®, call 1-800-848-7722 & order publication # 31-9067 (LokRing repair procedures manual) and publication # 31-9066 (Lokring repair procedures VHS video tape).

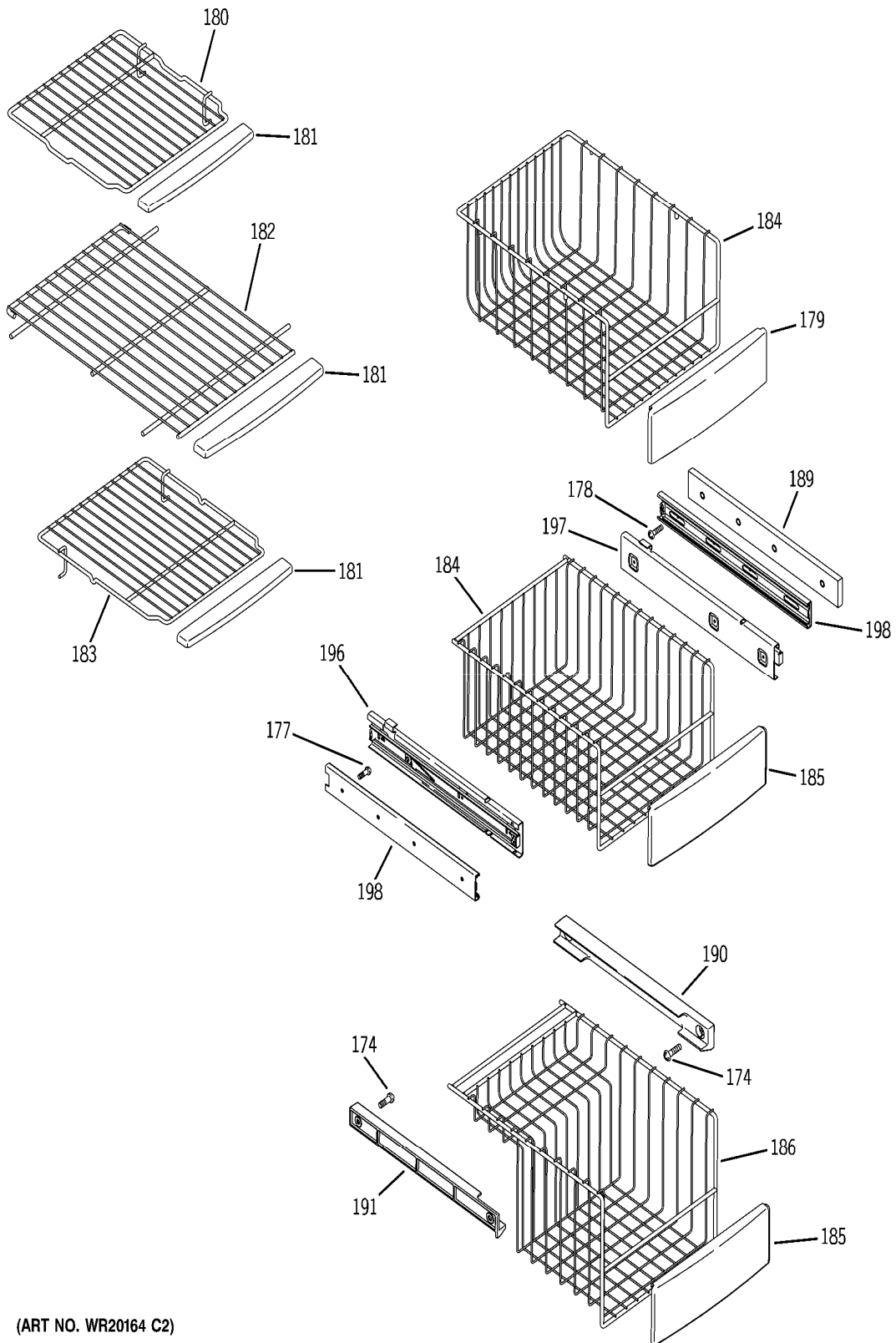


HEAT SHIELD METHOD

The heat shield kit is used to prevent damage to the refrigerator liner when brazing the evaporator into the sealed system. Refer to the instructions included in the heat shield kit. The kit comes with enough heat absorbing paste, solder and tape to complete four repairs.

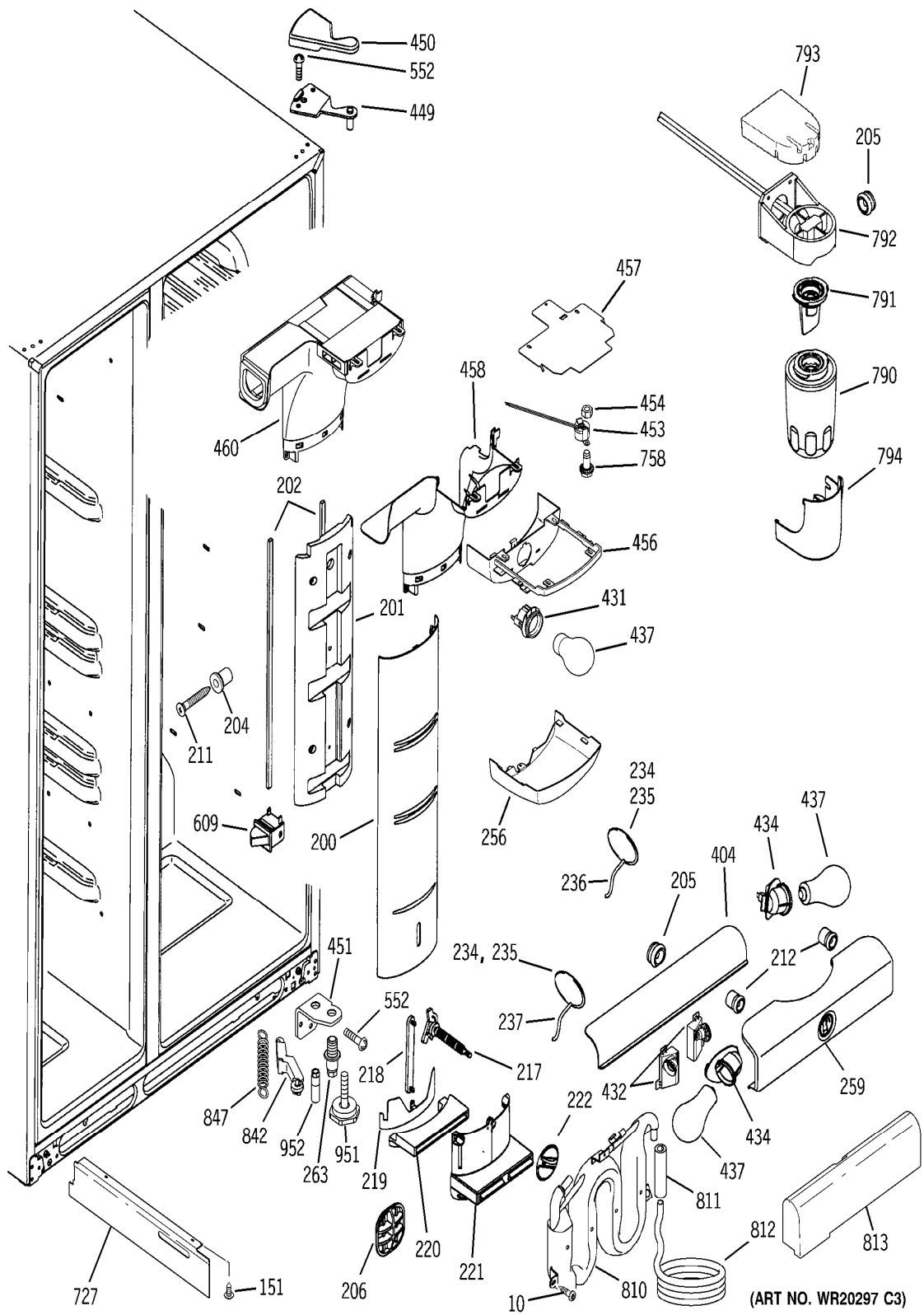


[CSHS5UGXCSS] FREEZER SHELVES

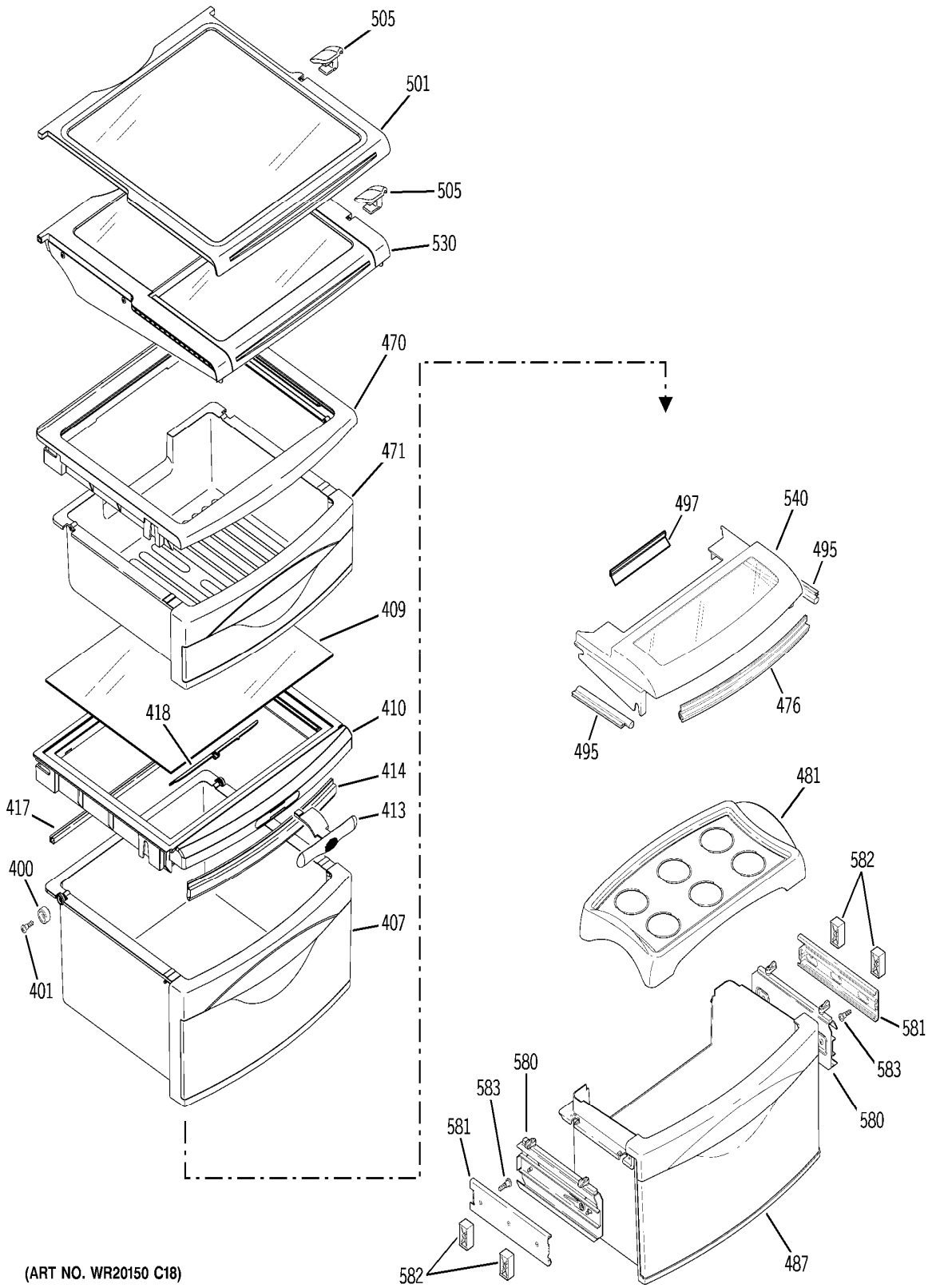


(ART NO. WR20164 C2)

[CSHS5UGXCSS] FRESH FOOD SECTION

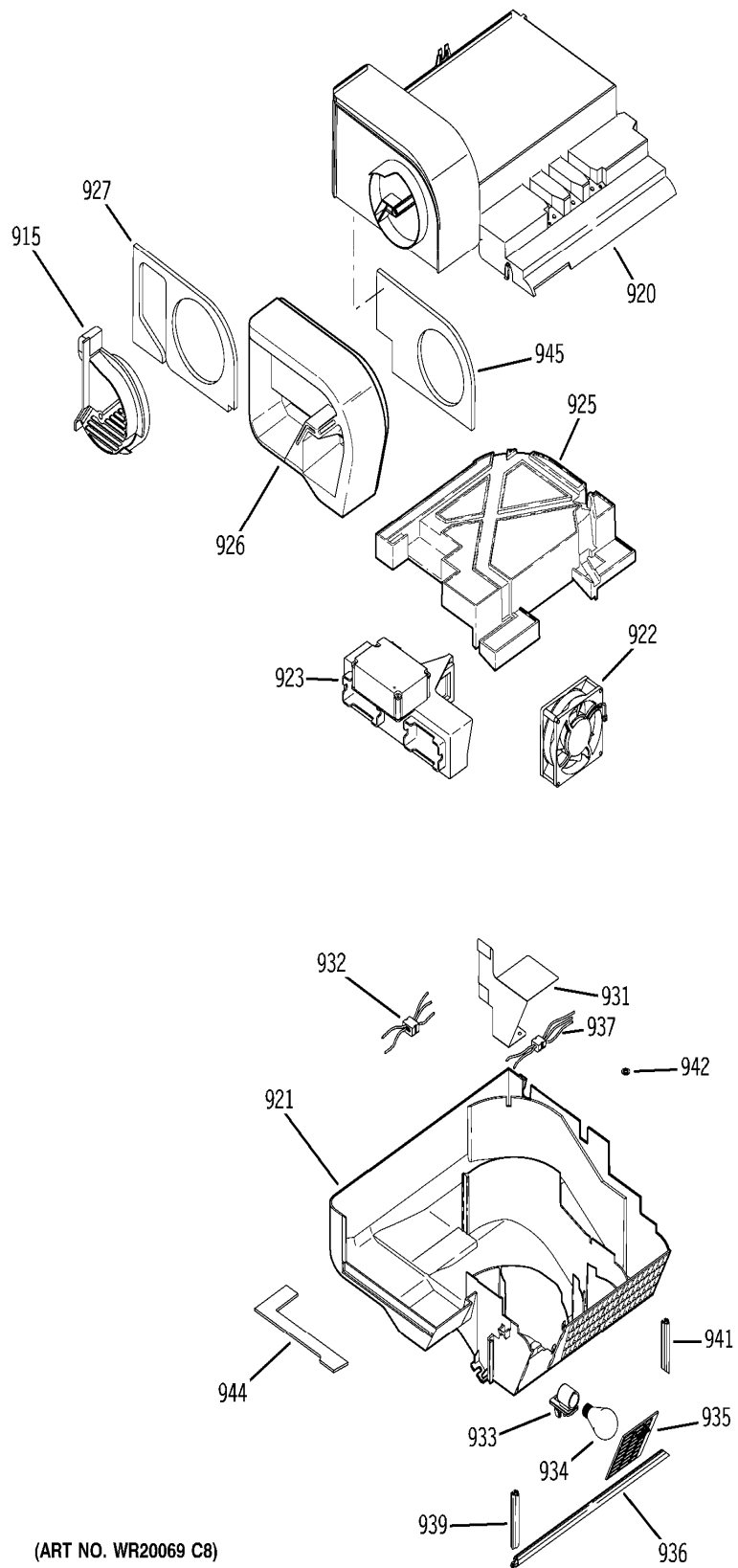


[CSHS5UGXCSS] FRESH FOOD SHELVES



(ART NO. WR20150 C18)

[CSHS5UGXCSS] CUSTOM COOL



(ART NO. WR20069 C8)