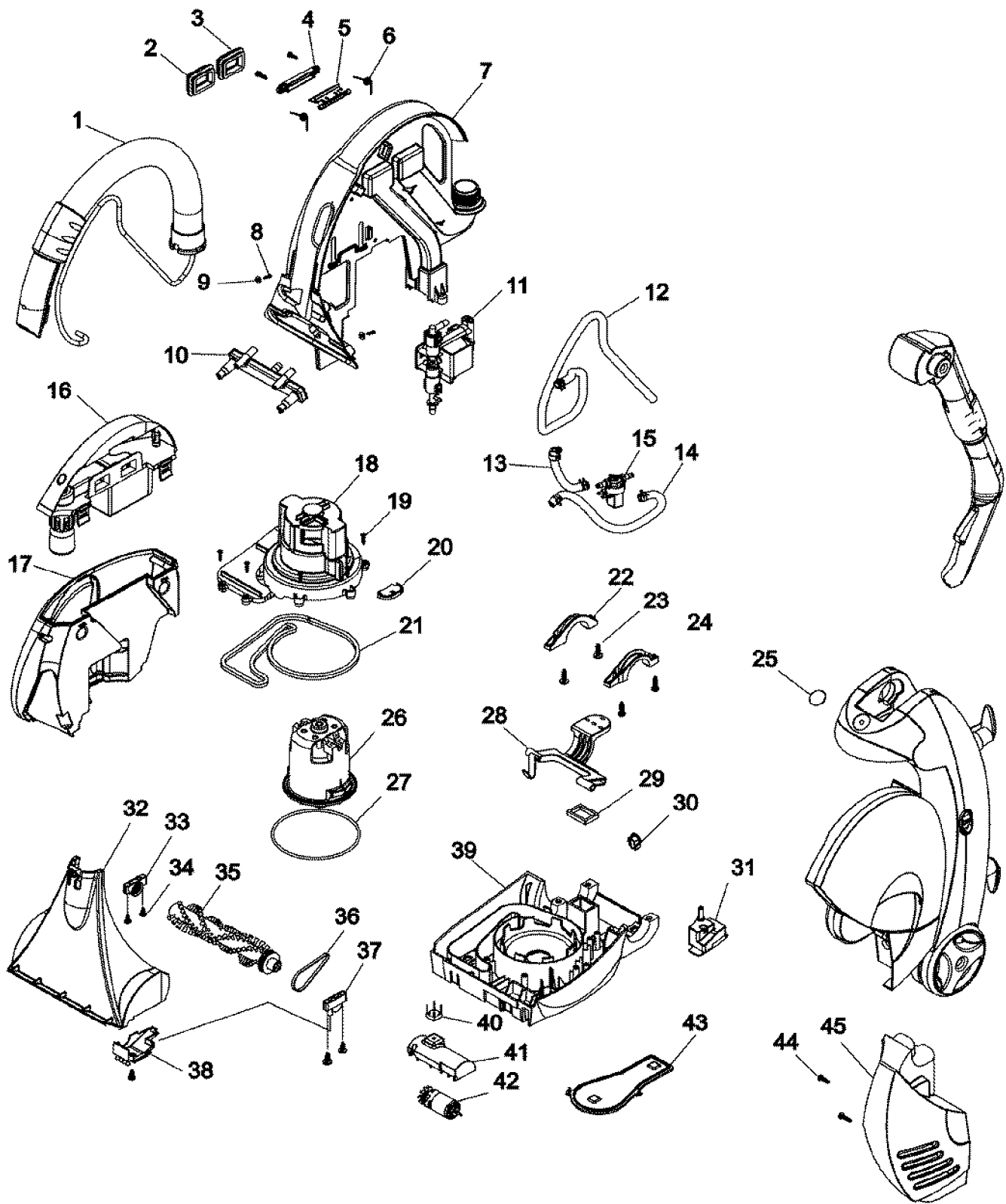


Tank does NOT come with parts 10-16

Model Number: F5520---
BOM/Serial #: F5520---
Graphic Title: UPPER HANDLE ASSEMBLY

Image	Key	Part Number	Description	Substitution	Qty.
1	1	H-93001408	UPHOLSTERY NOZZLE ASSEMBLY		1
1	2	H-93001415	TOOL HOLDER		1
1	3	H-93001508	CORD DUMP		2
1	4	H-93001425	SCREW		10
1	5	H-93001370	LOWER HANDLE - REAR		1
1	6	H-93001385	AXLE		2
1	7	H-93001386	E CLIP		1
1	8	H-93001384	WHEEL		2
1	9	H-93001374	SOLUTION TANK		1
1	10	H-93001377	SPRING - SOLUTION TANK		1
1	11	H-93001376	SEAL - SOLUTION TANK		1
1	12	H-93001378	POPPET - SOLUTION TANK		1
1	13	H-93001417	VALVE BASE SEAL		1
1	14	H-93001412	SOLUTION TANK VALVE BASE		1
1	15	H-93001379	O RING CAP SEAL-SOLUTION TANK		1
1	16	H-93001375	CAP - SOLUTION TANK		1
1	17	H-93001383	RELEASE LEVER LOCK A		1
1	18	H-93001369	LOWER HANDLE - FRONT		1
1	19	H-93001435	RELEASE LEVER - FOLDING HANDLE		1
1	20	H-93001387	SPRING		1
1	21	H-93001425	SCREW		8
1	22	H-93001382	AGITATOR MOTOR CIRCUIT BREAKER		1
1	23	H-93001381	SWITCH BUTTON		1
1	24	H-93001380	ON OFF SWITCH ASSEMBLY		1
1	25	H-93001371	CARRY HANDLE		1
1	26	H-93001434	RESERVOIR ASSEMBLY		1
1	27	H-93001372	SOLUTION TANK SUPPT SHELF FRT		1
1	28	H-93001373	SOLUTION TANK SUPP SHELF REAR		1
1	29	H-93001425	SCREW		4
1	30	H-93001390	LWR TUBE - TELESCOPING HANDLE		1
1	31	H-93001388	MOUNT-TELESCOPING HANDLE - LH		1
1	32	H-93001399	CLUTCH HOUSING REAR		1
1	33	H-93001393	BUSHING - LWR TELESCOPING TUBE		1
1	34	H-93001392	BUSHING -UPPR TELESCOPING TUBE		1
1	35	H-93001389	MOUNT-TELESCOPING HANDLE - RH		1

Image	Key	Part Number	Description	Substitution	Qty.
1	36	H-93001398	CLUTCH HOUSING FRONT		1
1	37	H-93001394	TUBE LOCK		1
1	38	H-93001509	CLUTCH SLIDE		1
1	39	H-93001395	SPRING		1
1	40	H-93001391	UPPR TUBE - TELESCOPING HANDLE		1
1	41	H-93001402	GRIP - LH		1
1	42	H-93001401	SWITCH AND TRIGGER SUPPORT		1
1	43	H-93001405	MICROSWITCH - ACTIVATE VALVE		1
1	44	H-93001404	TRIGGER		1
1	45	H-93001403	GRIP - RH		1



Model Number: F5520---
BOM/Serial #: F5520---
Graphic Title: LOWER MAIN ASSEMBLY

Image	Key	Part Number	Description	Substitution	Qty.
1	1	H-93001349	HOSE ASSEMBLY		1
1	2	H-93001357	RECOV TANK OUTLET SEAL W/SCRN		1
1	3	H-93001356	RECOVERY TANK INLET SEAL		1
1	4	H-93001420	RECOVERY TANK LATCH RETAINER		1
1	4	H-93001423	SCREW		2
1	5	H-93001418	RECOVERY TANK LATCH		1
1	6	H-93001419	SPRING		2
1	7	H-93001433	SPINE ASSEMBLY		1
1	8	H-93001423	SCREW		2
1	9	H-93001430	WASHER		2
1	10	H-93001343	FLOOR NOZZLE SPRAY JET ASSEM		1
1	11	H-93001355	PUMP - SOLENOID		1
1	12	H-93001506	TUBING CLAMP		2
1	12	H-93001502	SOLUTION, TUBING		1
1	13	H-93001503	SOLUTION, TUBING		1
1	13	H-93001505	TUBING CLAMP		1
1	13	H-93001506	TUBING CLAMP		1
1	14	H-93001504	SOLUTION, TUBING		1
1	14	H-93001506	TUBING CLAMP		2
1	15	H-93001363	SOLENIOD VALVE-FLUID PRESSURE		1
1	16	H-93001407	RECOVERY TANK BUCKLE		2
1	16	H-93001431	RECOVERY TANK LID ASSEMBLY		1
1	17	H-93001406	RECOVERY TANK ASSEMBLY		1
1	18	H-93001359	MOTOR COVER		1
1	19	H-93001423	SCREW		5
1	20	H-93001421	SLIDE SEAL		1
1	21	H-93001368	MOTOR COVER SEAL		1
1	22	H-93001360	TRUNNION COVER RHS		1
1	23	H-93001425	SCREW		4
1	24	H-93001361	TRUNNION COVER LHS		1
1	25	H-93001429	HOOVER EMBLEM		1
1	26	H-93001365	MOTOR FAN ASSEMBLY		1
1	27	H-93001507	MOTOR SEAL (O-RING)		1
1	28	H-93001362	HANDLE RELEASE PEDAL		1
1	29	H-93001358	RECOVERY DUCT - MAIN BODY SEAL		1

Image	Key	Part Number	Description	Substitution	Qty.
1	30	H-93001428	CORD RETAINER		1
1	31	H-93001414	HANDLE UPRIGHT SWITCH ASSEMBLY		1
1	32	H-93001432	FLOOR NOZZLE ASSEMBLY		1
1	33	H-93001346	NON BELT SIDE SUPPORT ASSEM		1
1	34	H-93001424	SCREW - AGITATOR SUPP ASSEM		5
1	35	H-93001344	AGITATOR ASSEMBLY		1
1	36	H-93001347	AGITATOR TIMING BELT		1
1	37	H-93001345	BELT SIDE BUSHING SUPP ASSEM		1
1	38	H-93001348	AGITATOR BELT COVER		1
1	39	H-93001424	SCREW - AGITATOR SUPP ASSEM		5
1	39	H-93001342	MAIN BODY&DUCT COVER ASSM		1
1	40	H-93001367	RECTIFIER		1
1	41	H-93001411	COVER - AGITATOR MOTOR		1
1	41	H-93001422	SCREW		2
1	42	H-93001362	HANDLE RELEASE PEDAL		1
1	43	H-93001416	AIR DUCT COVER		1
1	44	H-93001425	SCREW		2
1	45	H-93001413	SIDE COVER		1
1	46	H-93001409	SOLUTION TUBING ASSEMBLY		1
1	46	H-93001438	OWNER MANUAL-MODELS W/PHT		1
1	47	H-93001436	POWERED HAND TOOL		1
1	48	H-40321048	DEEP CL DET-48OZ(6)		1
1	48	H-40325032	PET STAIN/ODOR-32(6)		1
1	48	H-40321050	PET FORMULA-48OZ (6)		1