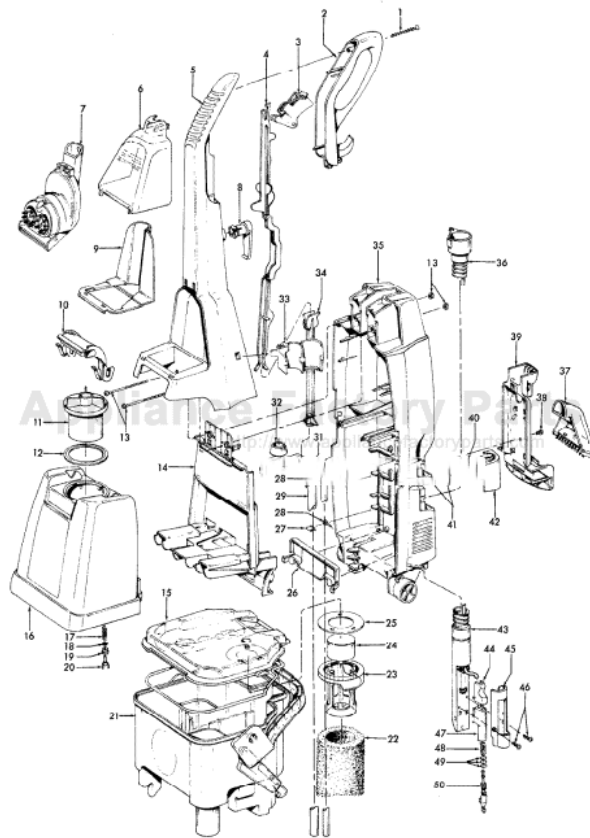


This Owner's Manual is provided and hosted by [Appliance Factory Parts](http://ApplianceFactoryParts.com).



# HOOVER F5841-9RM Owner's Manual

[Shop genuine replacement parts for HOOVER  
F5841-9RM](#)

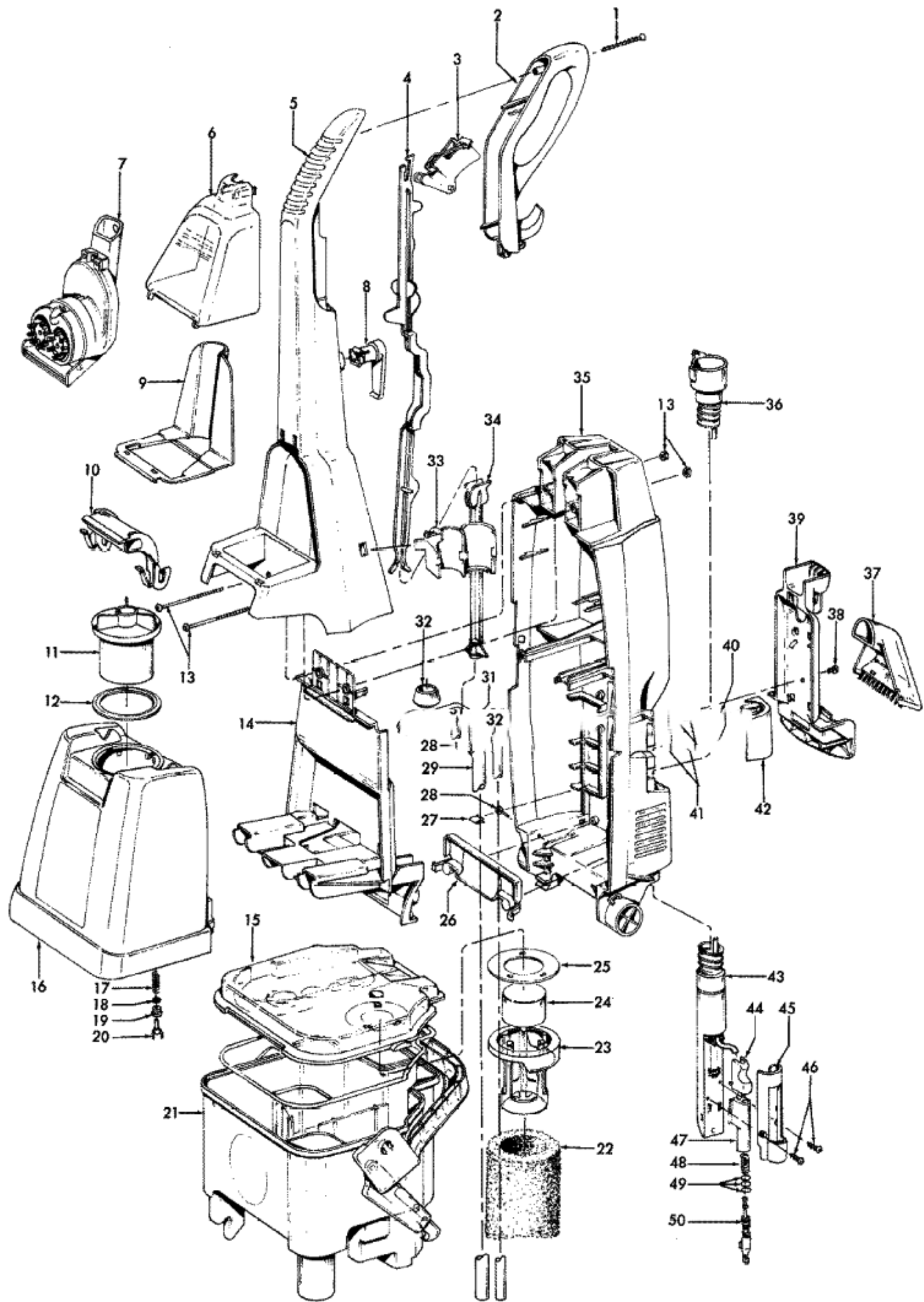


[Find Your HOOVER Vacuum Cleaner Parts - Select From 1456 Models](#)

----- Manual continues below part list -----

## Available Replacement Parts for HOOVER F5841-9RM

<a href="#">H-38784062</a>	Gasket .
<a href="#">H-38613040</a>	NOZZLE BODY, WITH RELEASE TAB
<a href="#">H-38762010</a>	FILTER, EXTRACTOR FOAM



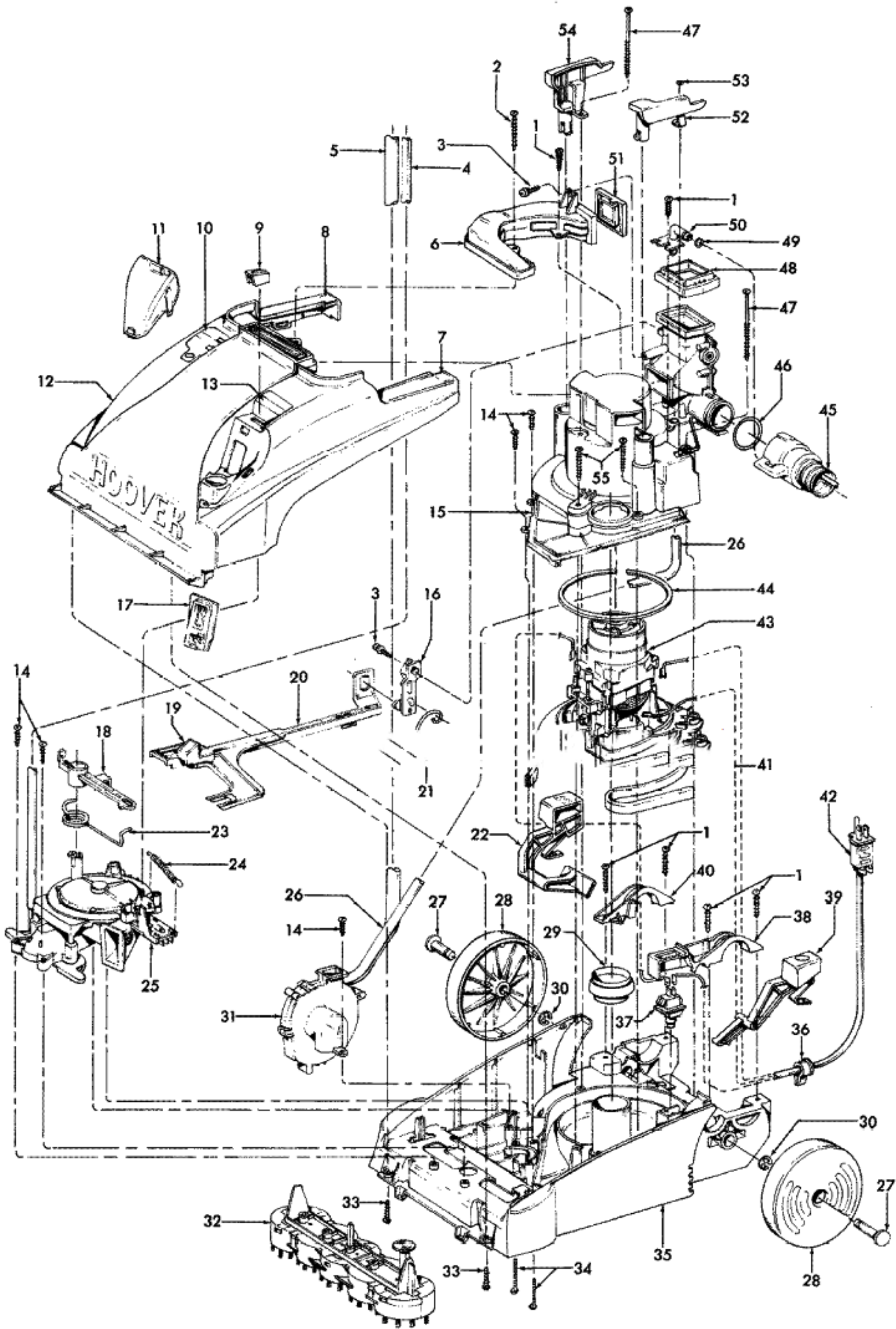
**Model Number: F58419RM**

**BOM/Serial #: F58419RM**

**Graphic Title: MAINHSG\_UPPER**

Image	Key	Part Number	Description	Substitution	Qty.
1	1	21447248	SCREW-SELF TAPPING-S		1
1	2	39458006	HANDLE LEVER GUARD-S		1
1	3	38434028	CONTROL LEVER-SV III		1
1	4	38458037	UPPER CONTROL ROD-SV		1
1	5	48663215	Handle Kit - SV	12002632	1
1	5	40309038	UPPER HANDLE-KIT		1
1	6	37276014	TOOL DOOR-F6030-900		1
1	7	48439002	TURBINE NOZZLE W/REL		1
1	8	39442041	CORD WRAP		1
1	9	36433127	TOOL HOLDER - F5871-		1
1	10	39457016	SOLUTION TANK HANDLE		1
1	11	42272002	SOLUTION TANK CAP ASSEM		1
1	12	38784062	GASKET		1
1	13	40201154	HANDLE HDWE ASSEM-SV		1
1	14	37276002	HANDLE COVER-SV III		1
1	15	42272120	RECOVERY TANK LID AS		1
1	16	42272134	SOLUTION TANK-F6028		1
1	17	38312014	SPRING		1
1	18	-----	NOT REQUIRED PART OR SEE NOTE		1
1	19	38784061	VALVE SEAL		1
1	20	38717009	VALVE STEM		1
1	21	38777065	RECOVERY TANK-SV		1
1	22	43611041	TANK FILTER		1
1	23	38719027	FLOAT RETAINER-STEAM		1
1	24	43538001	Float Assembly		1
1	25	38784070	SEAL-FL. RET.-STEAM		1
1	26	37276010	SOLUTION TUBE COVER-		1
1	27	-----	NOT REQUIRED PART OR SEE NOTE		1
1	28	21447244	SCREW-LOWER HDL-SV I		1
1	29	40309002	SERVICE TUBING - STE		1
1	30	40309002	SERVICE TUBING - STE		1
1	31	43516008	RESERVOIR ASSEM-F581		1
1	32	38784060	SOLUTION TANK SEAL		1
1	33	36172005	HOSE/NOZZLE HOLDER-S		1
1	34	38458033	CONTROL ROD - LOWER		1

Image	Key	Part Number	Description	Substitution	Qty.
1	35	39466037	LOWER HANDLE-SV III		1
1	36	43436011	HOSE ASSEMBLY		1
1	36	40309032	Hose/Noz Kit-SVIII_E		1
1	37	38613040	NOZZLE BODY W/REL TA		1
1	38	21447041	SCREW		1
1	39	36433131	TOOL RACK-LOWER-STM		1
1	40	36171032	HOSE CLAMP-SV III'S		1
1	41	21447228	SCREW-SELF-TAPPING		2
1	42	36131097	HOSE COVER-SV III		1
1	43	40309032	Hose/Noz Kit-SVIII_E		1
1	43	43436011	HOSE ASSEMBLY		1
1	44	38433074	TRIGGER-SV III'S		1
1	45	37276006	WAND COVER-SV III		1
1	46	21447239	SCREW		1
1	47	43513012	WAND/VALVE ASSEM-F54	91001060	1
1	48	38312019	SPRING		1
1	49	-----	NOT REQUIRED PART OR SEE NOTE		1
1	50	43412007	NOZZLE/VALVE ASSEMBL		1



Model Number: F58419RM

BOM/Serial #: F58419RM

Graphic Title: MOTOR ASSEMBLY, MAINHSG\_LOWER

Image	Key	Part Number	Description	Substitution	Qty.
1	1	21447003	SCREW		1
1	2	21447247	SCREW-SV III		1
1	3	23149002	SCREW-SELF TAPPING		1
1	4	40309002	SERVICE TUBING - STE		1
1	5	40309002	SERVICE TUBING - STE		1
1	6	43466071	DUCT-SV III		1
1	7	51865024	ON/OFF LABEL - STEAM		1
1	8	51638055	HDL REL LABEL-STEAM		1
1	9	38421093	INDICATOR KNOB-F5851		1
1	10	51438006	NAMEPLATE-TOOL MODE-		1
1	11	39383106	LENS-F5851/55/59		1
1	12	37271083	Hood-AG-F5893-910	37271079	1
1	12	37271055	HOOD ASSEMBLY-F5873-		1
1	12	37271045	HOOD ASSEMBLY-F5837-		1
1	12	37271051	HOOD ASSEMBLY-F5868-		1
1	13	51855031	Br.Sp.Nameplate	51639192	1
1	14	21447217	SCREW-SELF TAPPING		1
1	15	42191007	MOTOR CR OVE VALVE MBL-S		1
1	15	42191005	MOTOR COVER/VALVE-SV		1
1	16	36439001	VALVE CRANK ARM-SV I		1
1	17	43613009	SCREEN-F5851/55/59		1
1	18	-----	NOT REQUIRED PART OR SEE NOTE		1
1	19	51611008	INDICATOR LABEL-STM		1
1	20	38458050	TURBINE ACTUATOR ARM		1
1	20	38458024	TURBINE ACTUATOR ARM		1
1	21	36132003	OVER CENTER SPRING-S		1
1	22	38458042	HANDLE RELEASE LEVER		1
1	23	38356013	SPRING- TURBINE-F586		1
1	24	38333009	SPRING-F5851/55/59		1
1	25	43191003	TURBINE ASSEMBLY-SV	91001021	1
1	26	40309002	SERVICE TUBING - STE		1
1	27	32434007	REAR AXLE		2
1	28	38522076	REAR WHEEL		2
1	29	38784063	STANDPIPE SEAL		1
1	30	160017--	LOCK RING		1

Image	Key	Part Number	Description	Substitution	Qty.
1	31	43582005	PUMP ASSEMBLY-SV III		1
1	32	48437022	BRUSH BLOCK-F5851/55		1
1	33	21447072	SCREW		2
1	34	21479438	SCREW		2
1	35	37272095	MAIN BODY		1
1	35	42274005	MN BODY-SV-W/VT-5 BR		1
1	36	36172016	CORD RETAINER		1
1	37	28218048	SWITCH-F5805/15/25		1
1	38	36131086	TRUNION COVER - LH		1
1	39	38434025	SWITCH ACTUATOR LEVE		1
1	40	36131085	TRUNION COVER - RH		1
1	41	38781048	MOTOR BASE SEAL		1
1	42	46583012	ATTACH. CORD-31'-F58		1
1	42	46583044	CORD-STEAM VAC-33'		1
1	43	43576203	MOTOR-SV-HOOVER(NEW)		1
1	43	43576202	MOTOR ASSEM-F5853		1
1	44	34113004	MOTOR SEAL		1
1	45	40309032	Hose/Noz Kit-SVIII_E		1
1	45	43436011	HOSE ASSEMBLY		1
1	46	25156518	O RING-ALL SV III		1
1	47	21447246	SCREW-S-S-AL III		1
1	48	38783023	VALVE TANK SEAL-SV I		1
1	49	25156517	O RING-ALL SV III		1
1	50	38719039	SOLUTION HOSE COUPLE		1
1	51	38783024	VALVE DUCT SEAL-SV I		1
1	52	36151021	LATCH LOCK-LH-SV III		1
1	53	21364107	SPEED NUT-S6529/43/4		1
1	54	36151020	LATCH LOCK-RH-SV III		1
1	55	21447232	SCREW-SELF TAPPING-F		2
1	56	48447002	BRUSH BACK ASSM-DUAL		1